



**FOR LEASE**

**161 N. LA CIENEGA BLVD.**

**BEVERLY HILLS, CA 90211**

**SAM MINASIAN**

tel - 323-782-1261

samminasian@southparkgroup.com

DRE LICENSE #01212823



## *Property Overview*

# RETAIL/ POTENTIAL RESTAURANT FOR LEASE

AVAILABLE  
IMMEDIATELY



### SIZE

Ground Floor ± 1,640 SF

### PARKING

Customer valet parking in adjacent lot  
and \$125 per month employee parking

### RATE

\$6.00 PSF per month NNN (\$0.90 PSF)

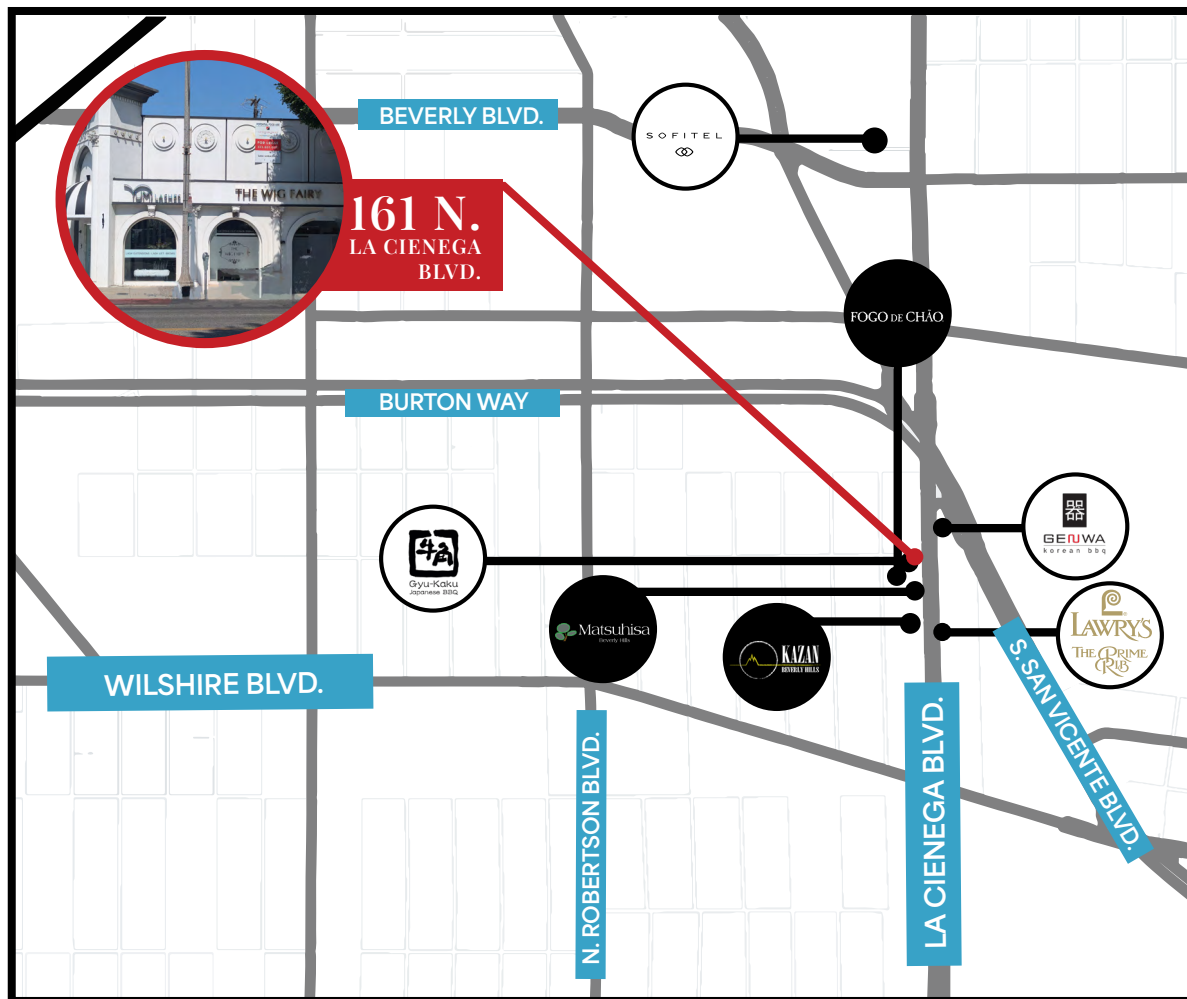
## *Interior Photos*

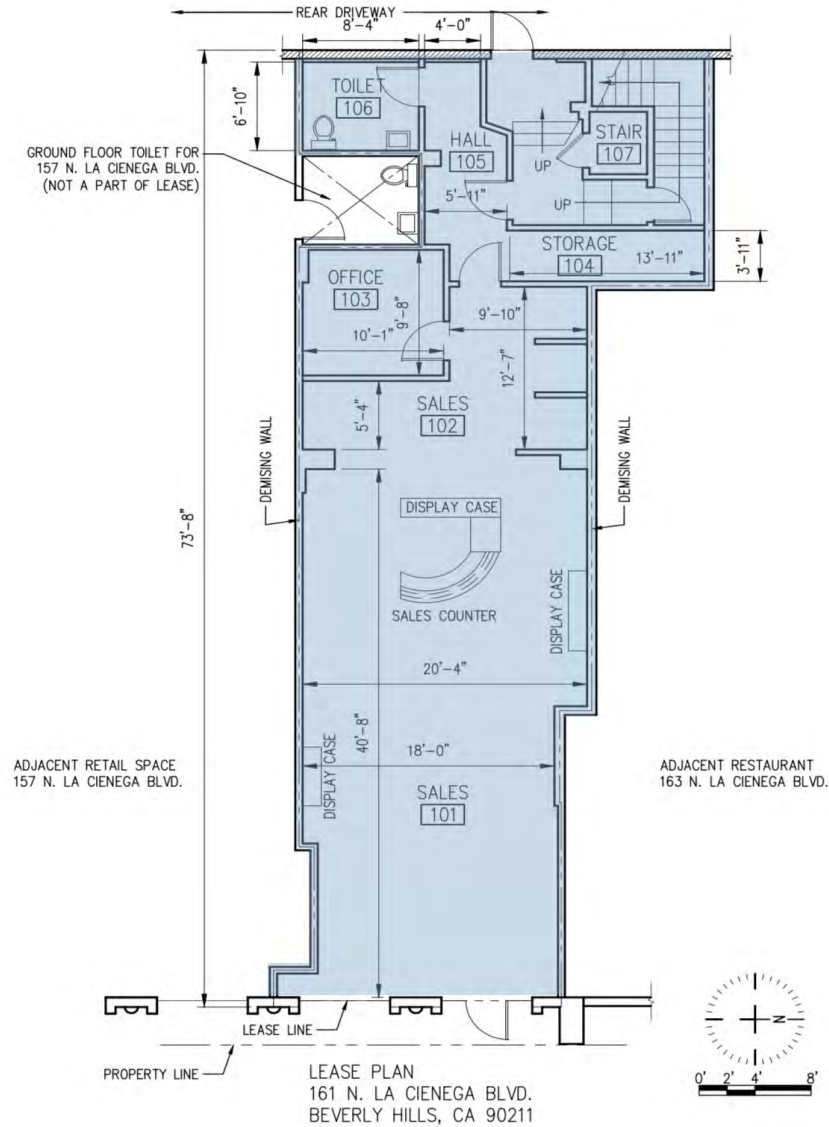


This information has been furnished by sources that we deem reliable, but for which we assume no liability. The information contained herein is given, in confidence, with the understanding that all negotiations pertaining to this property be handled through the submitting office. All measurements are approximate.

## Map Overview: Neighboring Tenants

This amazing property on N. La Cienega Blvd. is located on Beverly Hills' famous Restaurant Row. It offers a variety of use types, including gallery, restaurant, health and fitness, retail, and more. All parking requirements have been met for each use. With over 70,000 cars passing by daily, and just steps away from popular destinations such as the SLS Hotel, Matsuhisa, Kazan, Lawry's, Fogo de Chao, Genwa Korean BBQ, and Gyu-Kaku Japanese BBQ, this property presents an exciting opportunity.





---

**SAM MINASIAN**

**TELEPHONE:** (323) 782-1261

**EMAIL:** SAMMINASIAN@SOUTHPARKGROUP.COM

DRE # 01212823