

10,500 SF Medical Office for Lease

5109 Medical Drive

— San Antonio, TX 78229



About The Property

5109 Medical Drive is a 4-story, Class A, medical office building strategically nestled in the heart of South Texas Medical Center in Northwest San Antonio. The building sits on 3.43 acres of land and is approximately 80,000 square feet.



Property Highlights

- Located in the Christus Campus at the South Texas Medical Center
- 80,000 SF Building
- 4 Stories
- Free 4.32/1000 Parking
- Class A Finishes
- Built in 2008
- Easy Ingress/Egress to Medical Drive

For Information, Contact:

Allie Sledge, Associate
210.298.5412 | allie.sledge@streamrealty.com

Lee McKenna, Managing Director
210.298.5432 | lee.mckenna@streamrealty.com


STREAM

10,500 SF Medical Office for Lease



5109
Medical Drive
— San Antonio, TX 78229



For Information, Contact:

Allie Sledge, Associate
210.298.5412 | allie.sledge@streamrealty.com

Lee McKenna, Managing Director
210.298.5432 | lee.mckenna@streamrealty.com

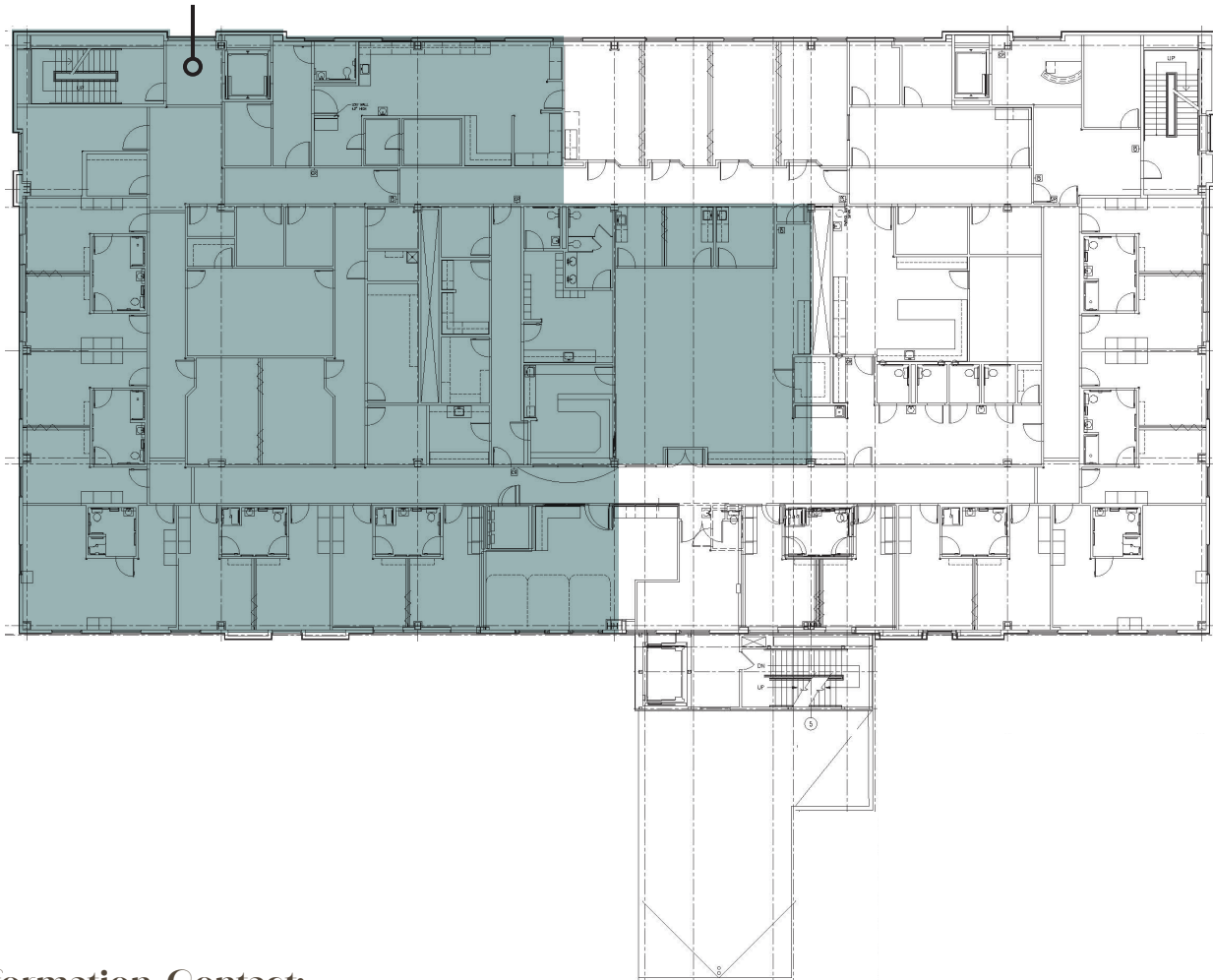


5109
Medical Drive
— San Antonio, TX 78229



Available Floorplan
3rd Level

Suite XXX
10,500 SF



For Information, Contact:

Allie Sledge, Associate
210.298.5412 | allie.sledge@streamrealty.com

Lee McKenna, Managing Director
210.298.5432 | lee.mckenna@streamrealty.com



5109 Medical Drive

— San Antonio, TX 78229



For Information, Contact:

Allie Sledge, Associate
 210.298.5412 | allie.sledge@streamrealty.com

Lee McKenna, Managing Director
 210.298.5432 | lee.mckenna@streamrealty.com



Copyright © 2024 Stream Realty Partners, All rights reserved. The information contained herein was obtained from sources believed reliable; however, Stream Realty Partners, L.P. make no guarantees, warranties, or representations as to the completeness or accuracy thereof. The presentation of this property is submitted subject to errors, change of price, or conditions, prior sale or lease, or withdrawal without notice.