

13308 W. MCNICHOLS ROAD
DETROIT, MICHIGAN



**SIGNATURE
ASSOCIATES**
KNOW SIGNATURE | KNOW RESULTS

RETAIL FOR LEASE
2,000 Square Feet Available



PROPERTY FEATURES

- 2,000 square feet available
- 12' clear height
- Zoned B2
- Brand new build-out, white box condition
- Lease Rate: \$1,250/month G + U



For more information, please contact:

JOE STACK
(248) 359 0615
jstack@signatureassociates.com

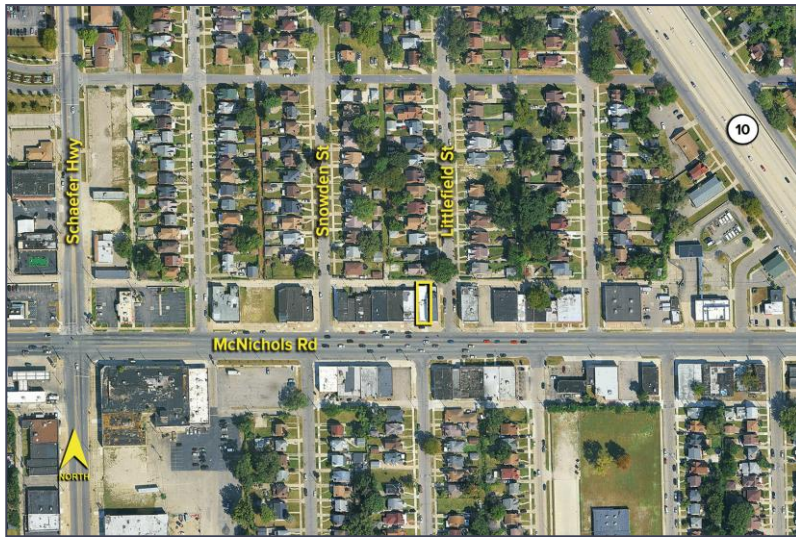
SIGNATURE ASSOCIATES
One Towne Square, Suite 1200
Southfield, MI 48076
www.signatureassociates.com

Information is subject to verification and no liability for errors or omissions is assumed. Price is subject to change and listing withdrawal.

13308 W. McNichols Road – Detroit, Michigan

Retail For Lease

2,000
Square Feet
AVAILABLE

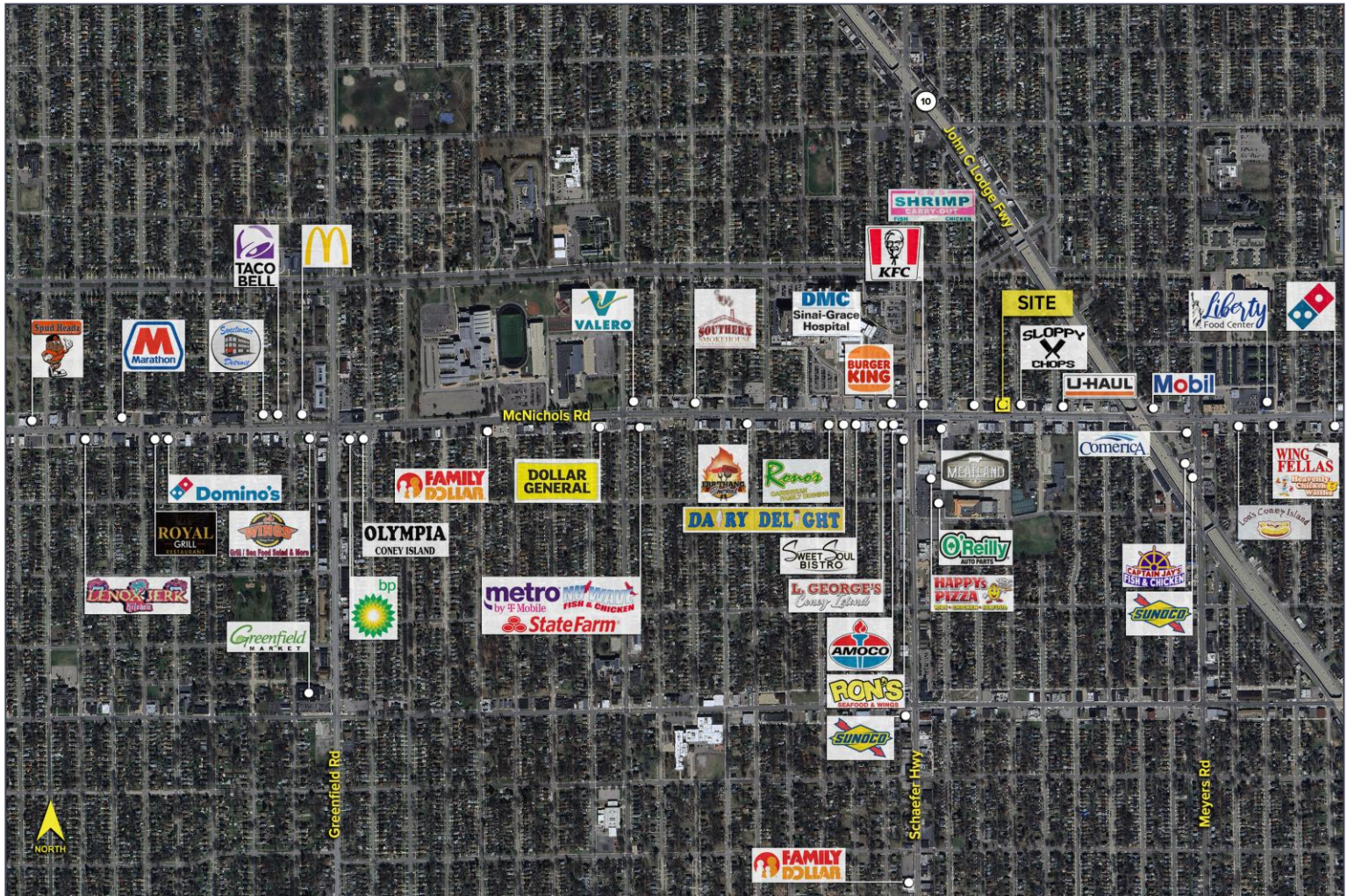


DEMOGRAPHICS

	POPULATION	MED. HH INCOME
1 MILE	24,346	\$45,359
3 MILE	165,088	\$47,781
5 MILE	403,399	\$53,729

TRAFFIC COUNTS (TWO-WAY)

16,983	McNichols Rd. E of M-10
23,730	McNichols Rd. W of M-10
45,917	M-10 N of McNichols Rd.
46,150	M-10 S of McNichols Rd.



For more information, please contact:

JOE STACK

(248) 359 0615

jstack@signatureassociates.com

SIGNATURE ASSOCIATES

One Towne Square, Suite 1200

Southfield, MI 48076

www.signatureassociates.com