

4123 – 4153 PIONEER DRIVE
COMMERCE TWP., MICHIGAN

INDUSTRIAL FOR SALE OR LEASE
5,283 – 21,617 Square Feet Available

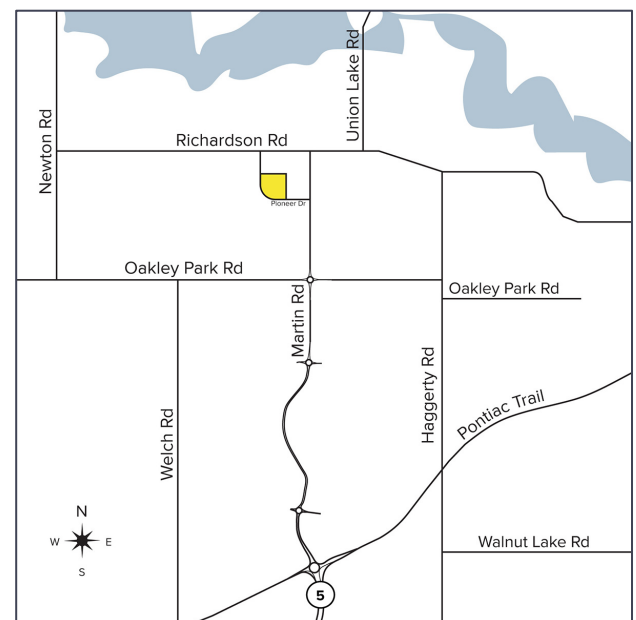


**SIGNATURE
ASSOCIATES**
KNOW SIGNATURE | KNOW RESULTS



PROPERTY FEATURES

- 5,283 – 21,617 square feet available
 - Suite 4123: 5,584 sq. ft. with 1,424 sq. ft. office
 - Suite 4133: 5,283 sq. ft. with 1,321 sq. ft. office **(lease pending)**
 - Suite 4143: 5,304 sq. ft. with 1,000 sq. ft. office
 - Suite 4153: 5,446 sq. ft. with 1,200 sq. ft. office
- 18' clear height
- (5) 12' x 14' grade level doors
- 1200 amps, 240 volts, 3 phase power
- Designed to accommodate up to 4 users
- Each suite is available individually or can be combined
- There is a separate 2.2-acre parcel for sale adjacent to this property
- Sale Price/Lease Rate: Contact Brokers



A PROPERTY BY:



For more information, please contact:

JEFF LEMANSKI
(248) 359 0641

jlemanski@signatureassociates.com

CHRISTOPHER M. D'ANGELO
(248) 948 0109

cdangelo@signatureassociates.com

SIGNATURE ASSOCIATES
One Towne Square, Suite 1200
Southfield, MI 48076
www.signatureassociates.com

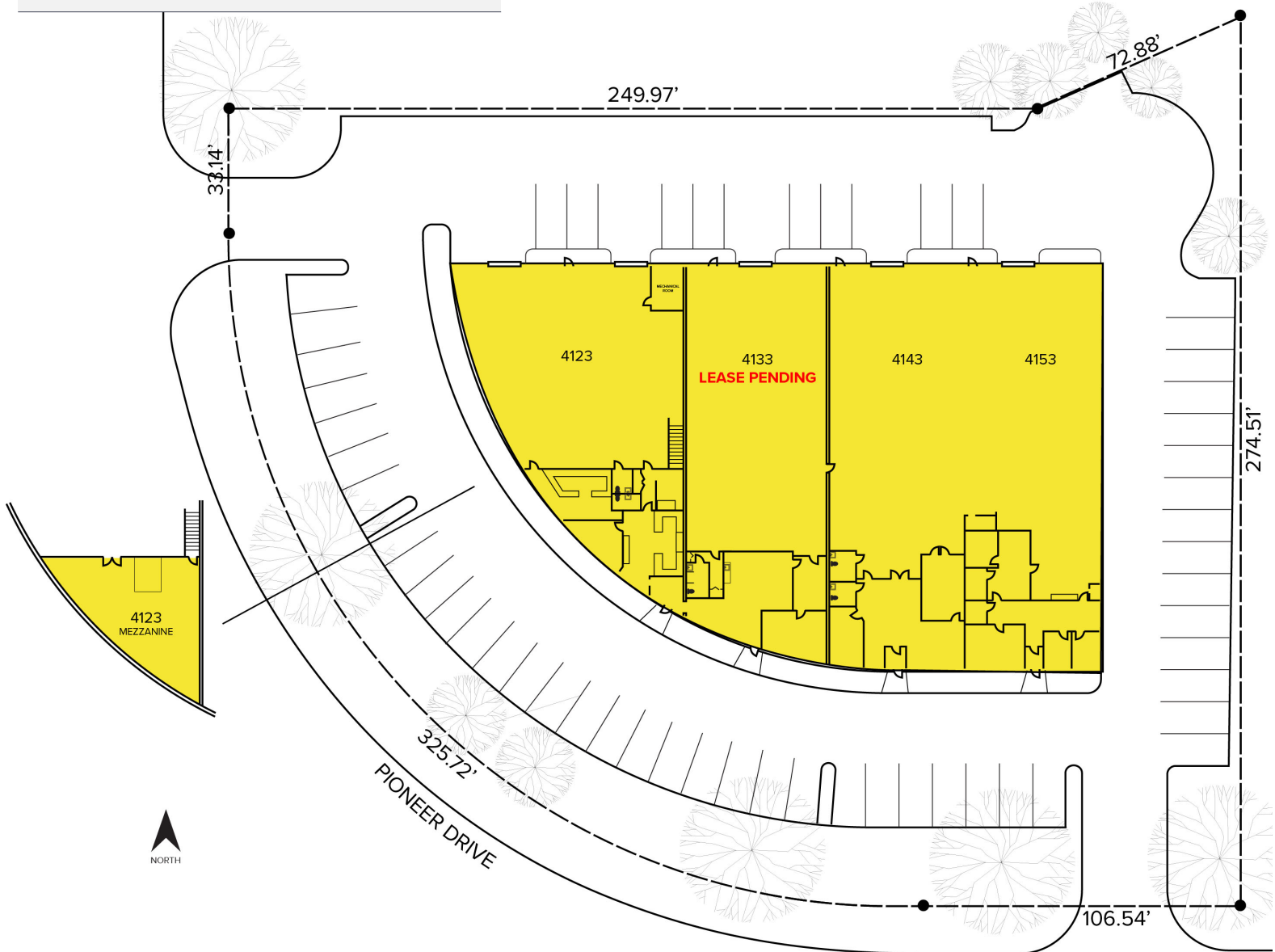
4123 – 4153 Pioneer Drive – Commerce Twp., MI

Industrial For Sale or Lease

5,283 – 21,617
Square Feet
AVAILABLE

Site Plan

AVAILABILITY		
UNIT	TOTAL SF	OFFICE SF
4123	5,584	1,424
4133	5,283	1,321
4143	5,304	1,000
4153	5,446	1,200
Mezzanine	1,424	



For more information, please contact:

JEFF LEMANSKI
(248) 359 0641

jlemanki@signatureassociates.com

CHRISTOPHER M. D'ANGELO
(248) 948 0109

cdangelo@signatureassociates.com

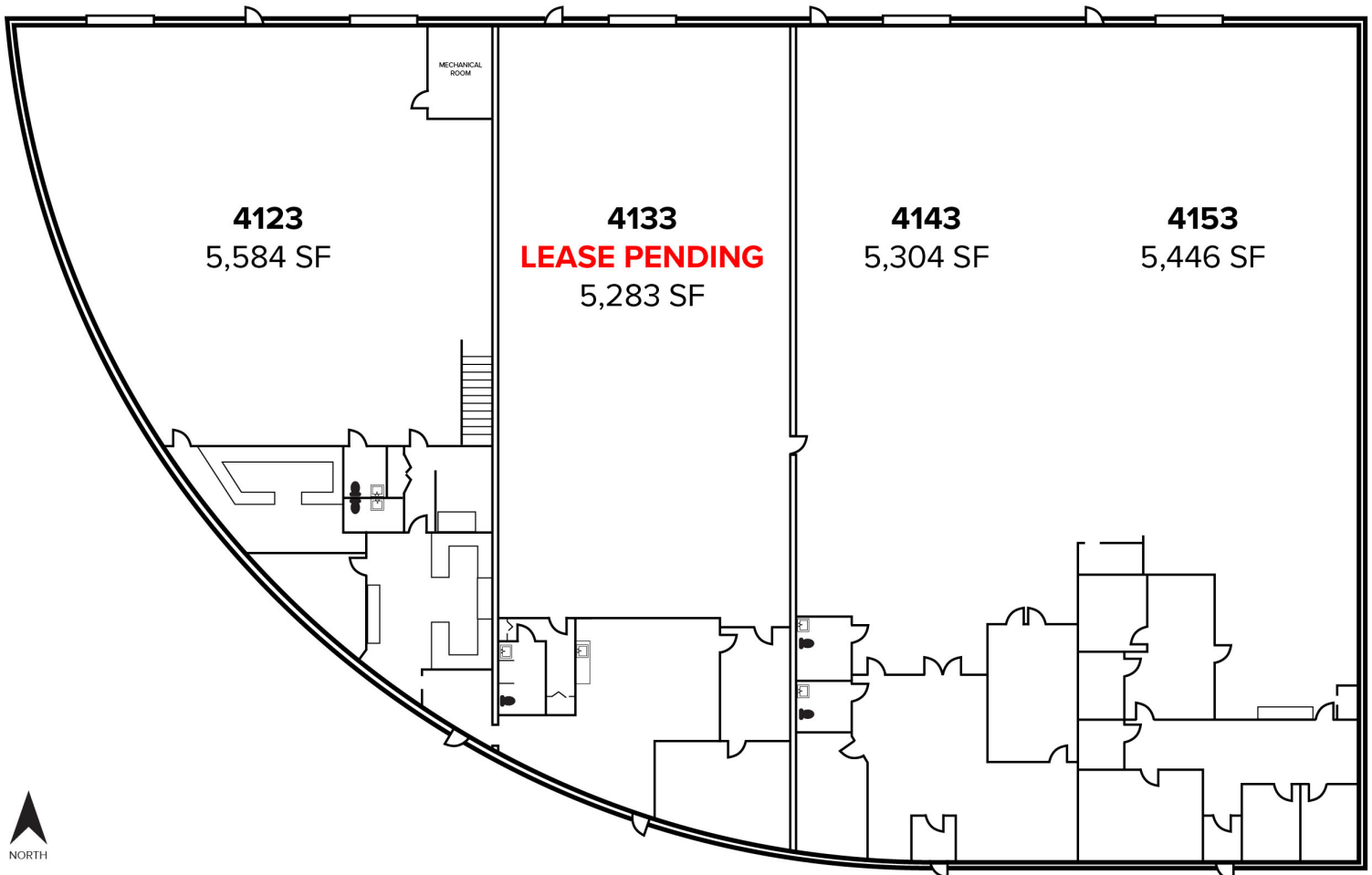
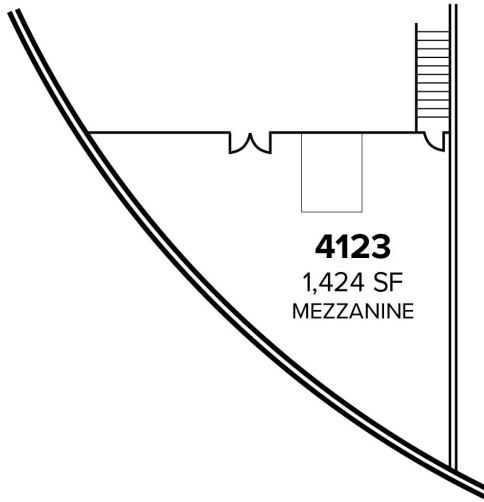
SIGNATURE ASSOCIATES
One Towne Square, Suite 1200
Southfield, MI 48076
www.signatureassociates.com

4123 – 4153 Pioneer Drive – Commerce Twp., MI

Industrial For Sale or Lease

5,283 – 21,617
Square Feet
AVAILABLE

Floor Plans



For more information, please contact:

JEFF LEMANSKI
(248) 359 0641

jlemanki@signatureassociates.com

CHRISTOPHER M. D'ANGELO
(248) 948 0109

cdangelo@signatureassociates.com

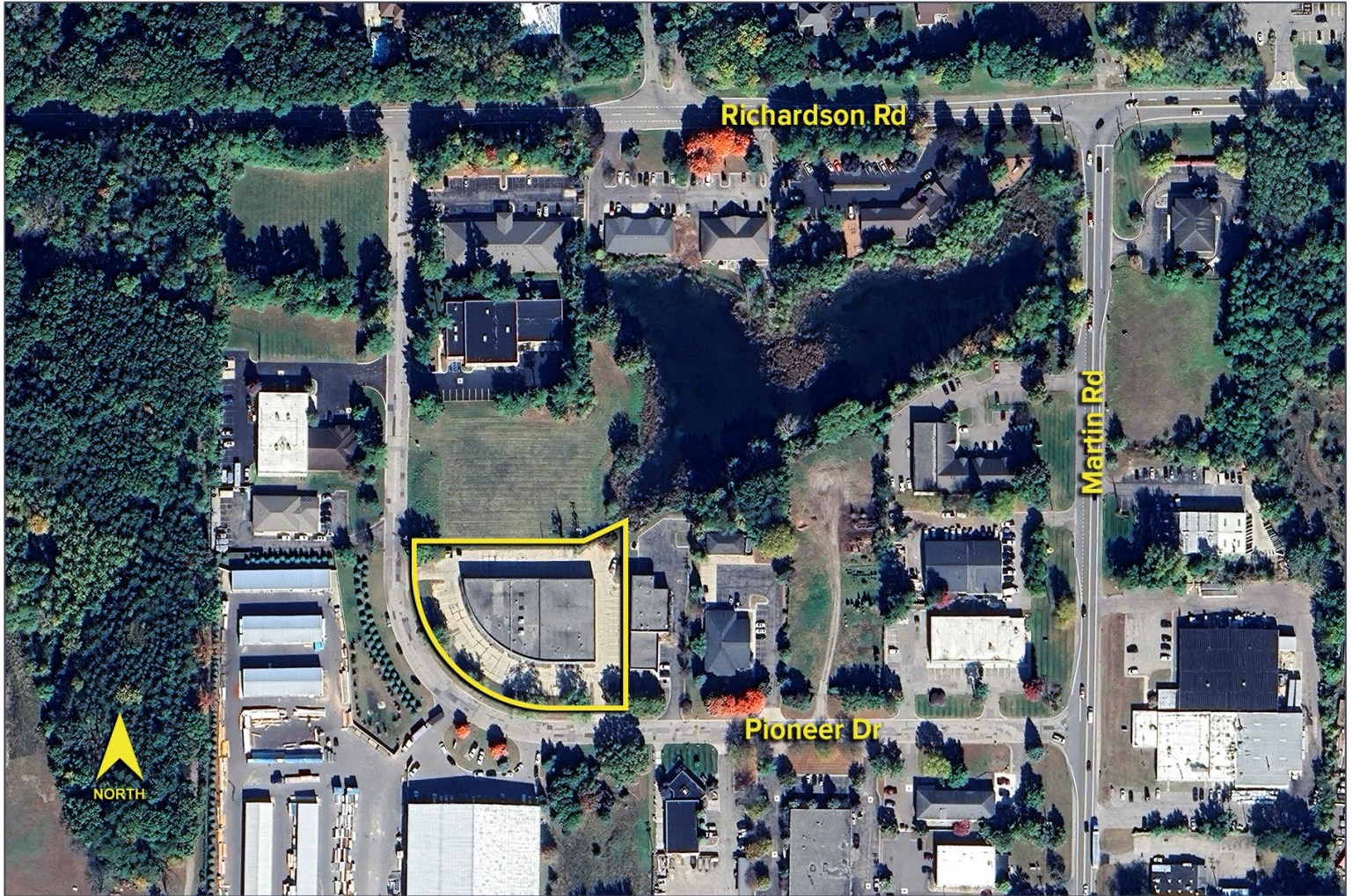
SIGNATURE ASSOCIATES
One Towne Square, Suite 1200
Southfield, MI 48076
www.signatureassociates.com

4123 – 4153 Pioneer Drive – Commerce Twp., MI

Industrial For Sale or Lease

5,283 – 21,617
Square Feet
AVAILABLE

Aerial



For more information, please contact:

JEFF LEMANSKI
(248) 359 0641

jlemanki@signatureassociates.com

CHRISTOPHER M. D'ANGELO
(248) 948 0109

cdangelo@signatureassociates.com

SIGNATURE ASSOCIATES
One Towne Square, Suite 1200
Southfield, MI 48076
www.signatureassociates.com