

LEVROSE  
COMMERCIAL REAL ESTATE

TCN  
WORLDWIDE  
REAL ESTATE SERVICES

# BECKER LANE MEDICAL PLAZA

FOR LEASE

## *Becker Lane Medical Plaza*

8896 E. BECKER LANE | SCOTTSDALE, AZ 85260

ZAK KOTTLER  
480.294.6003  
zkottler@levrose.com

HUNTER CHASSE  
480.289.4225  
hchasse@levrose.com

# Property Summary

**Property Address:** 8896 E. Becker Lane  
Scottsdale, AZ 85260


**Asking Rate:** \$21.00/SF NNN

**Availability:** Suite 100: ±1,844 SF

**Parking:** 4.00/1,000 SF

# Property Highlights

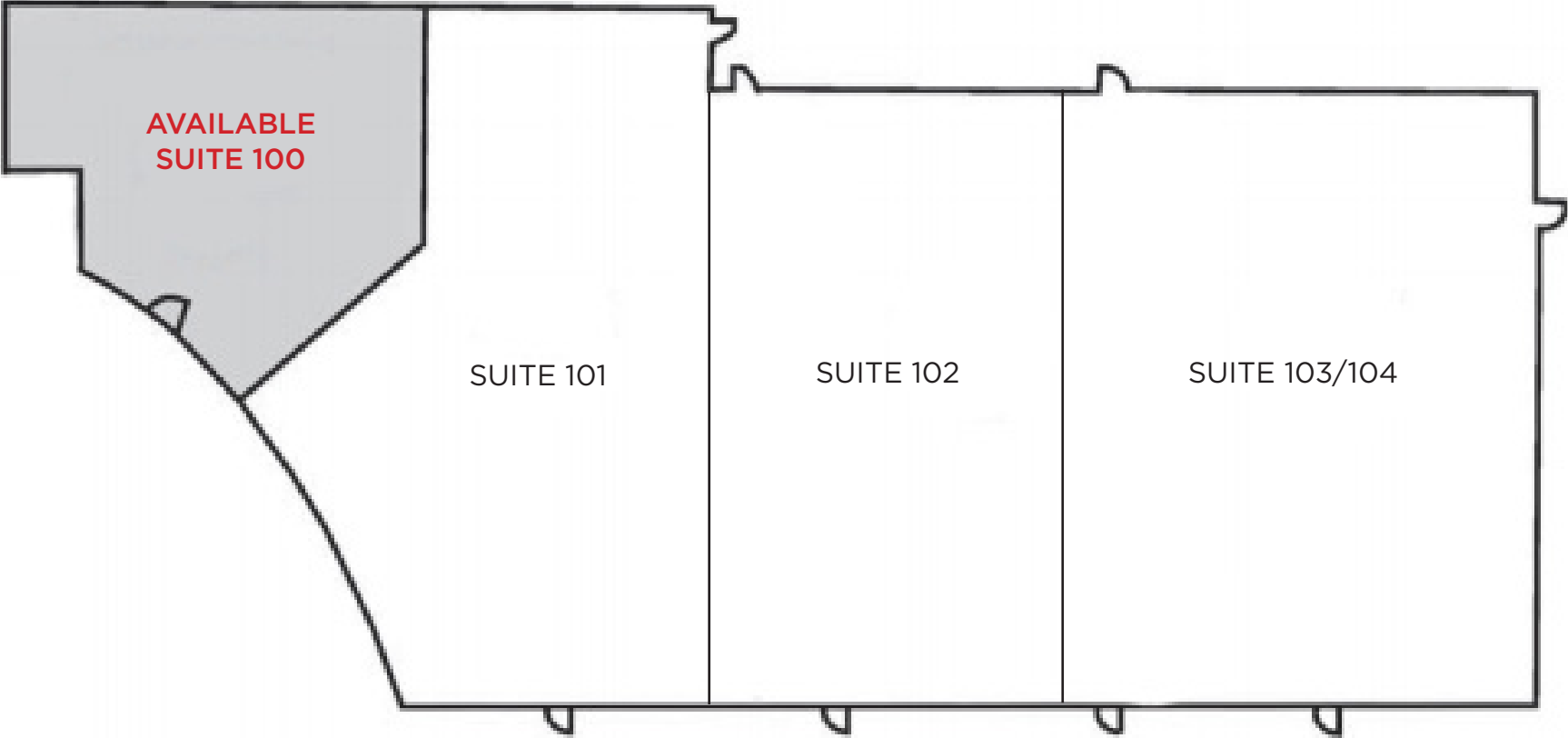
- Easy access with ample parking
- Located adjacent to HonorHealth Scottsdale Shea Medical Center
- Tremendous Curb appeal with impeccable greenery and building signage
- Immediate access to Loop 101
- Exquisite glass line which provides an abundance of natural light
- The Cure Corridor along Scottsdale's Shea Blvd promotes the bio-life sciences sector - A major driver of the innovation economy in Arizona
- Ample amenities within walking distance



BECKER LANE MEDICAL PLAZA

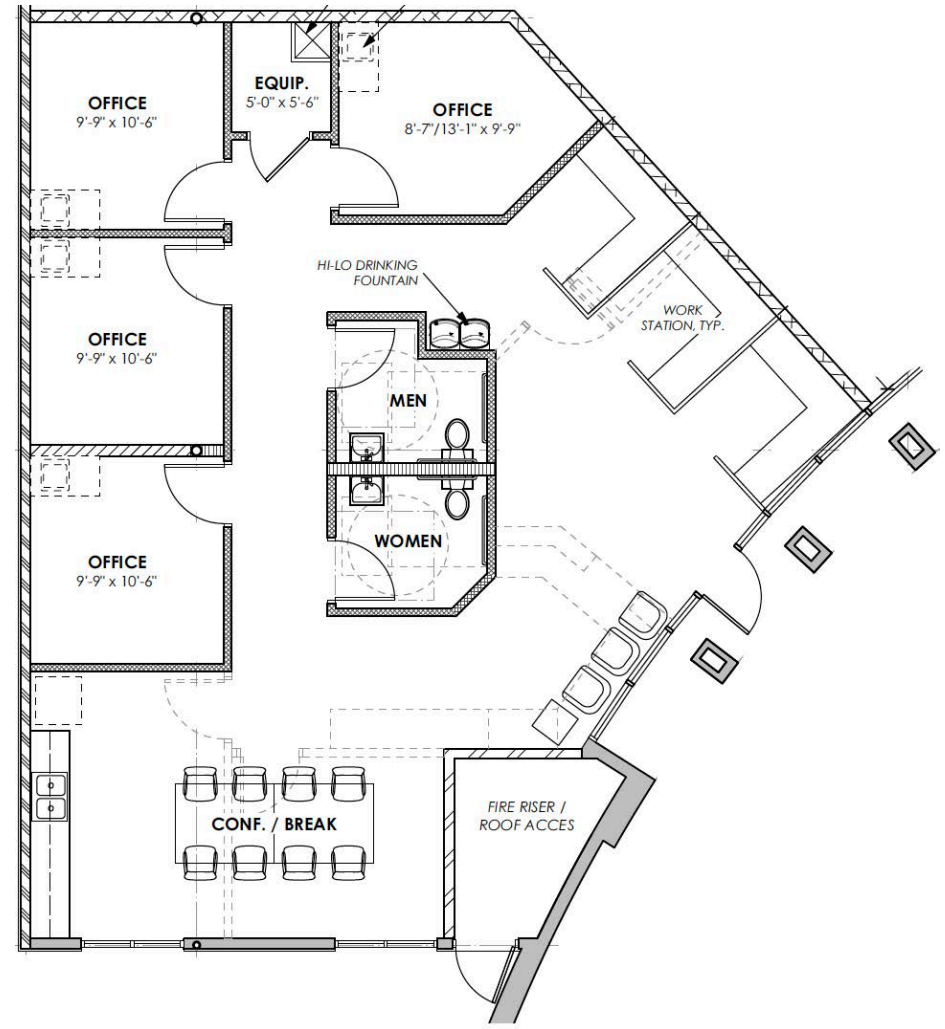
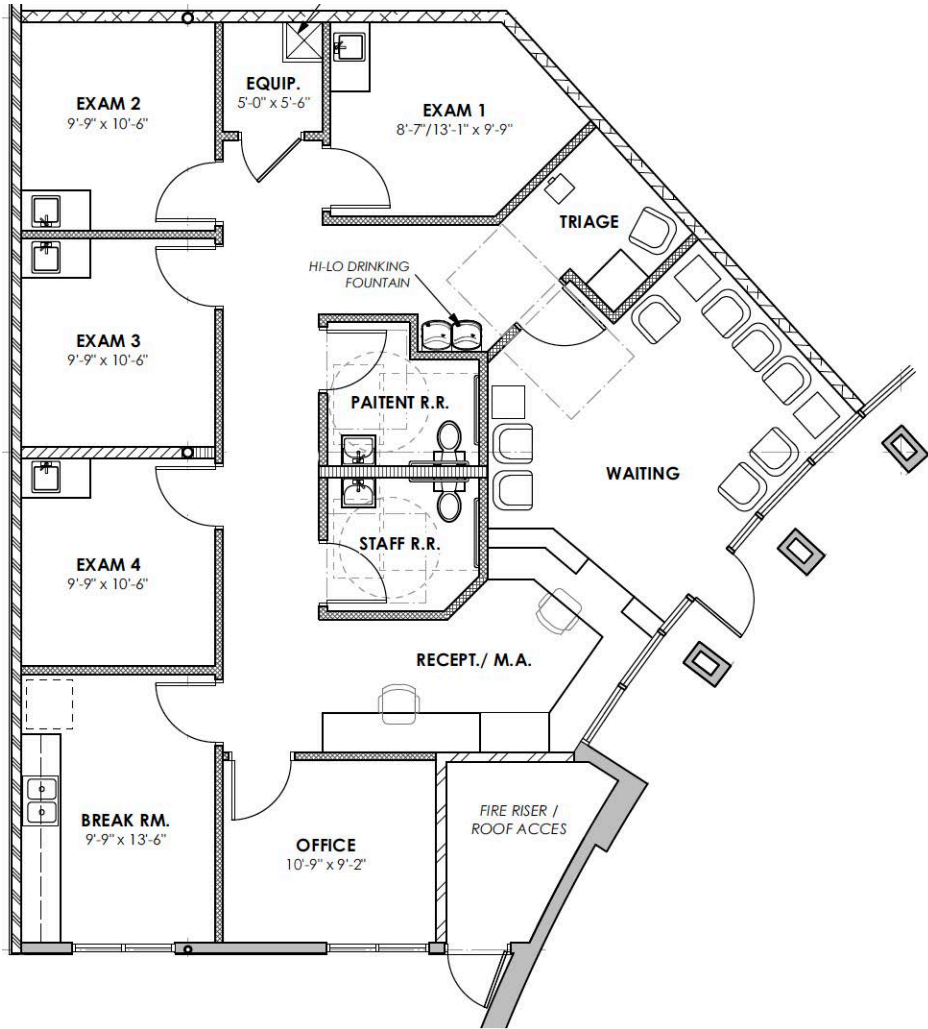
# Floor Plan

Suite 100: ±1,844 SF



This information has been secured from sources believed to be reliable, but no representations or warranties are made, expressed or implied, as to the accuracy of the information. References to square footage are approximate. Buyer and tenant must verify the information and bears all risk for any inaccuracies. All quoted prices are subject to change without notice.

# Speculative Floor Plans













**SITE**


  
**92 Jade Palace**  
 CHINESE CUISINE  
 DRINKS • EATS









LOOP  
**101**

E. SHEA ROAD

**HONORHEALTH™**











E. MOUNTAIN VIEW ROAD





8896 E BECKER LANE

ZAK KOTTLER  
480.294.6003  
zkottler@levrose.com

HUNTER CHASSE  
480.289.4225  
hchasse@levrose.com

**LEVROSE**  
COMMERCIAL REAL ESTATE

