



4,024 sf unit for lease with two drive in doors

Get more information

Charlie Gobert

Sales Representative, Principal

+1 226 289 2836

charlie.gobert@avisonyoung.com

Nolan Adkin

Broker, Principal

+1 226 289 2799

nolan.adkin@avisonyoung.com

avisonyoung.ca



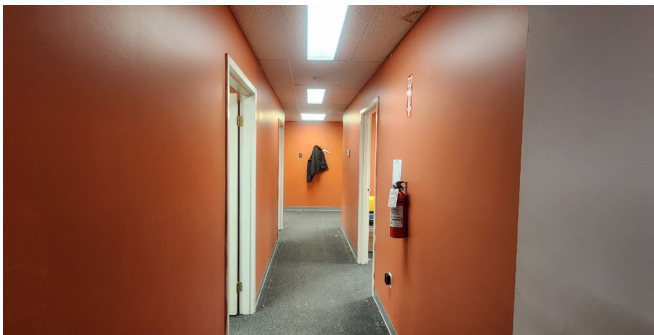
Platinum
member

Property details

Light industrial space available on the south end of London, moments from Highway 401. The unit is 4,024 sf with two drive-in door and approximately 75% warehouse. The remainder of the space is built out with a large showroom and private offices.

The additional rent is \$5.00 psf.

Available space	4,024 sf
Lot size	2.401 acres
Power	200-240V
Shipping	Two drive in doors
Zoning	LI2, LI7
Parking	Ample onsite
Public transit	Bus line #30 at property
Signage	Signband & directory
Asking net rate	\$9.75 psf
Additional rent	\$5.00 psf



Industrial For Lease

69 Bessemer Road #37, London ON



551,066

Population of London



380,809

Daytime population



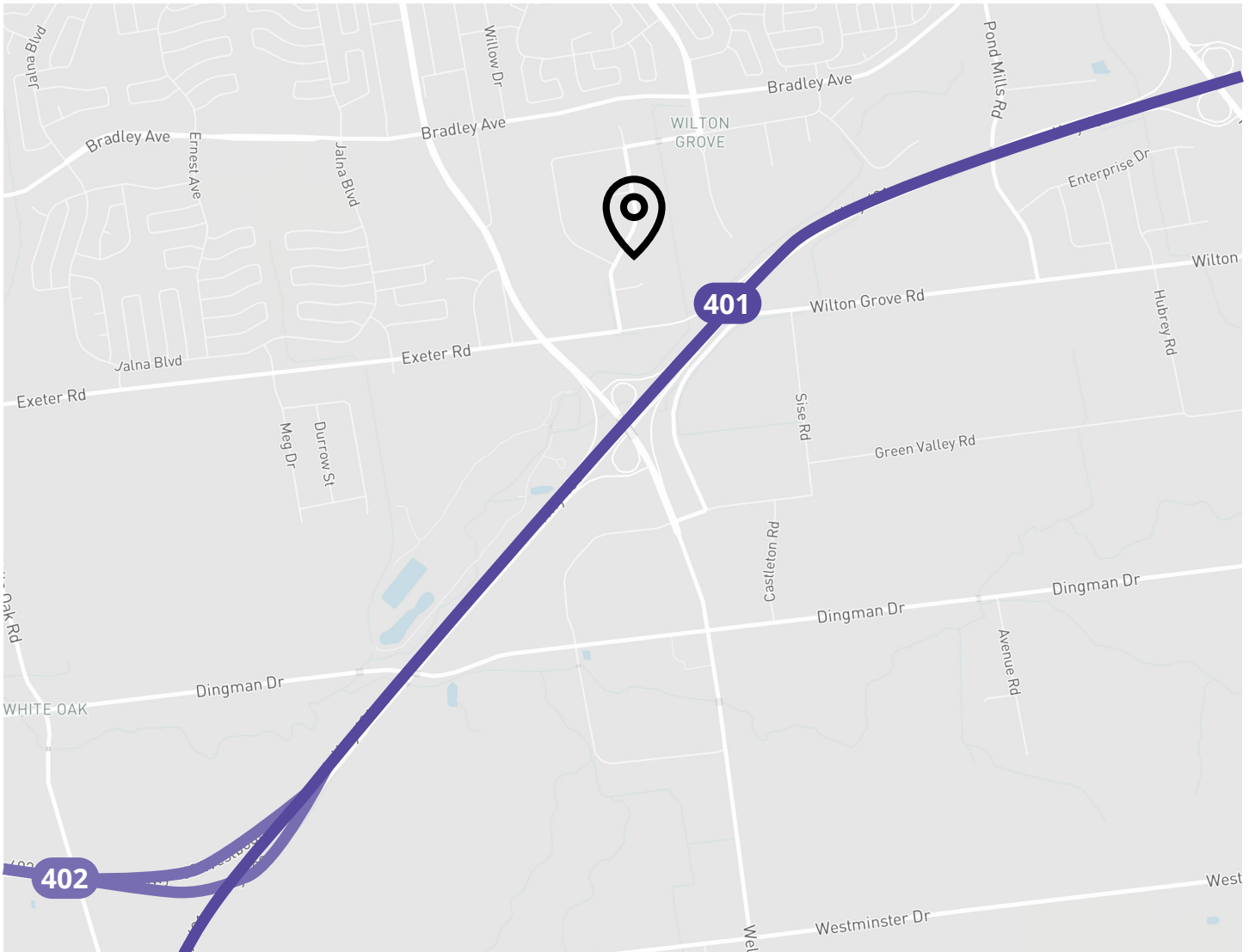
\$86,860

Median hshld income



39.7

Median age



Get more information

Charlie Gobert

Sales Representative, Principal

+1 226 289 2836

charlie.gobert@avisonyoung.com

Nolan Adkin

Broker, Principal

+1 226 289 2799

nolan.adkin@avisonyoung.com

Avison Young Commercial Real Estate Services, LP, Brokerage

495 Richmond Street, Unit 104

London, ON N6A 5A9

T +1 226 366 9090 F +1 866 541 9755

