



**EQT | EXETER**



# 6220 Purdue Drive

Atlanta, GA 30336

Building Size: 86,420 SF | 86,420 SF of Industrial Space Available

**VISIT** [EQTEXETER.COM](http://EQTEXETER.COM)

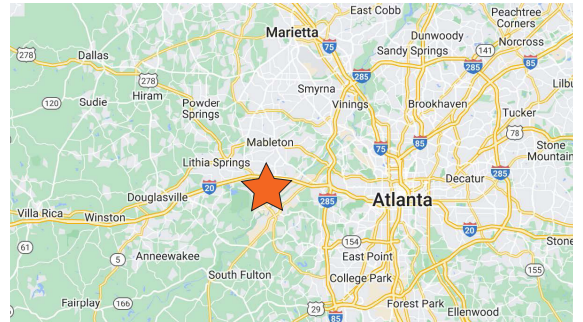
# 6220 Purdue Drive

Atlanta, GA 30336

Building Size: 86,420 SF | Building Availability: 86,420 SF

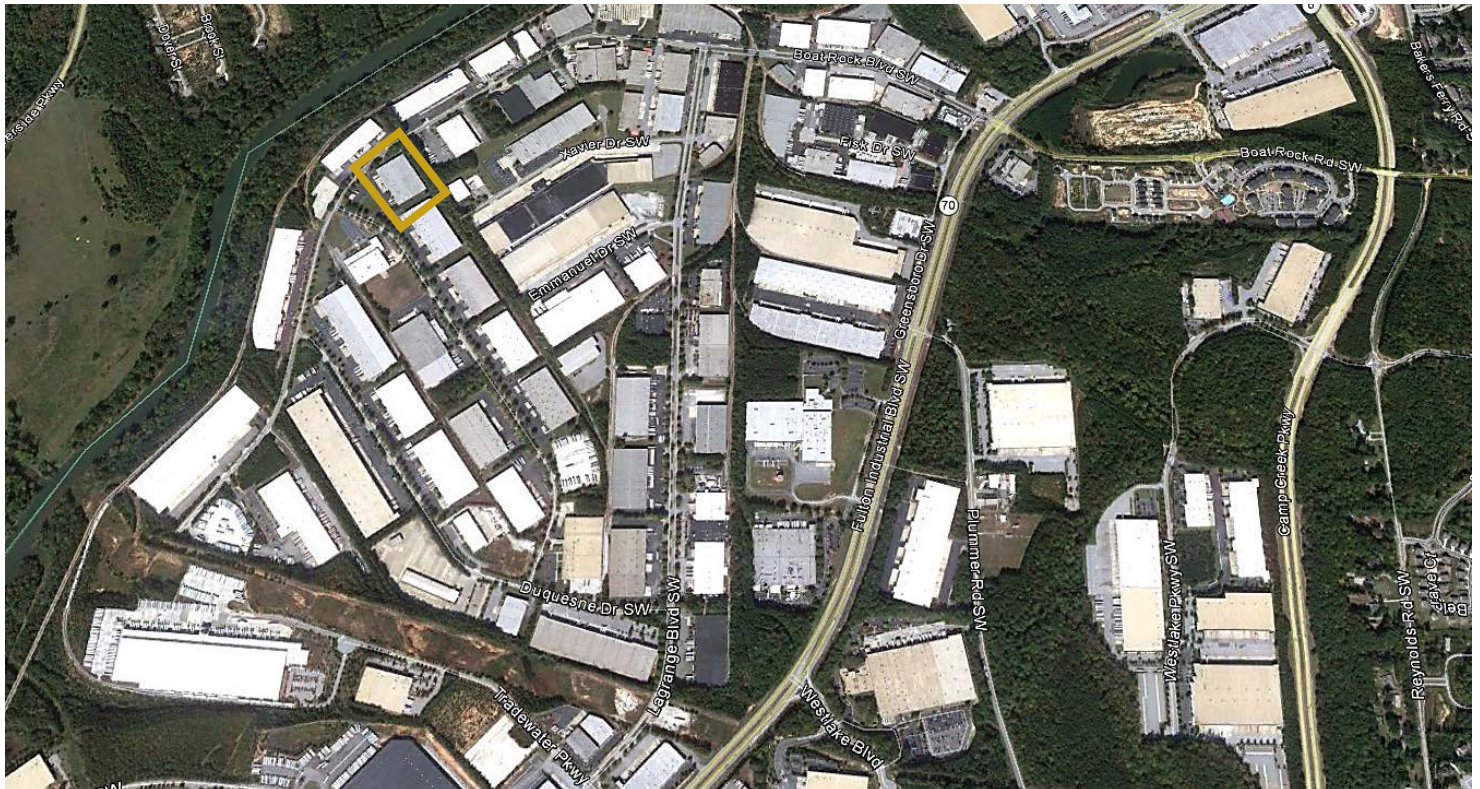
## Building Specifications

- 86,420 SF Total Size
- 86,420 SF Available
- 4,304 SF Office
- 242' Building Depth
- 22' Clear Height
- 40'd x 36'w Column Spacing
- Front Load
- Loading
- 14 Dock High Doors
- 1 Drive In
- 6 Rail Doors
- 120' Truck Court Depth
- Fully Sprinklered
- M-1 Zoning
- Free standing building with secure trailer storage area



## Location

- Located 5.7 miles off of I-20 in the Fulton Industrial Community Improvement District
- Hartsfield-Jackson Atlanta Airport – 14.2 Miles Atlanta Center – 14.7 Miles
- Intermodals: Austell, GA – 11.8 Miles Fairburn, GA – 16.7 Miles



# 6220 Purdue Drive

Atlanta, GA 30336

Building Size: 86,420 SF | Building Availability: 86,420 SF

