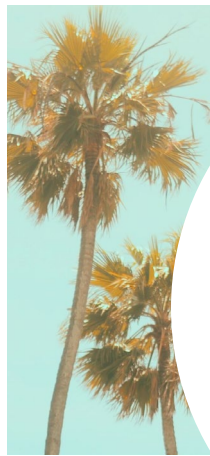


IN THE  
HEART OF  
HUNTINGTON  
BEACH,  
CALIFORNIA.



A SOULFUL  
OFFERING OF  
WATERFRONT  
OFFICE SPACE.



16360 / 16390 / 16400 PACIFIC COAST HIGHWAY, HUNTINGTON BEACH, CA





## PETERS LANDING HUNTINGTON BEACH, CA

With the best Orange County retail and restaurant concepts just steps away and great access to the region's top residential areas, Peter's Landing exemplifies a Southern California work-play environment.

Peter's Landing offers ready-made suites that allow executives to make quick business decisions, while the center's marina and beach access promote healthy, active lifestyles for company employees.



PREMIUM  
OFFICE  
SPACES  
FOR LEASE.





---

## SOUTHERN CALIFORNIA CULTURE AT ITS BEST



### Healthy Workplaces:

- Operable Windows
- Balconies
- Unobstructed Marina Views



### Renovated Common Areas with Open-Air Corridors



### Convenient Freeway Access



### Ample Surface Parking



### Reimagined Park Plaza for Collaborative Use



### On-Site Property Management



### Marina + Beach Access



### On-Site Amenities:

- Starbucks Coffee
  - Salon Services
  - Mother's Market
  - Yoga/Fitness
  - Premium Restaurants + Brewery
- 





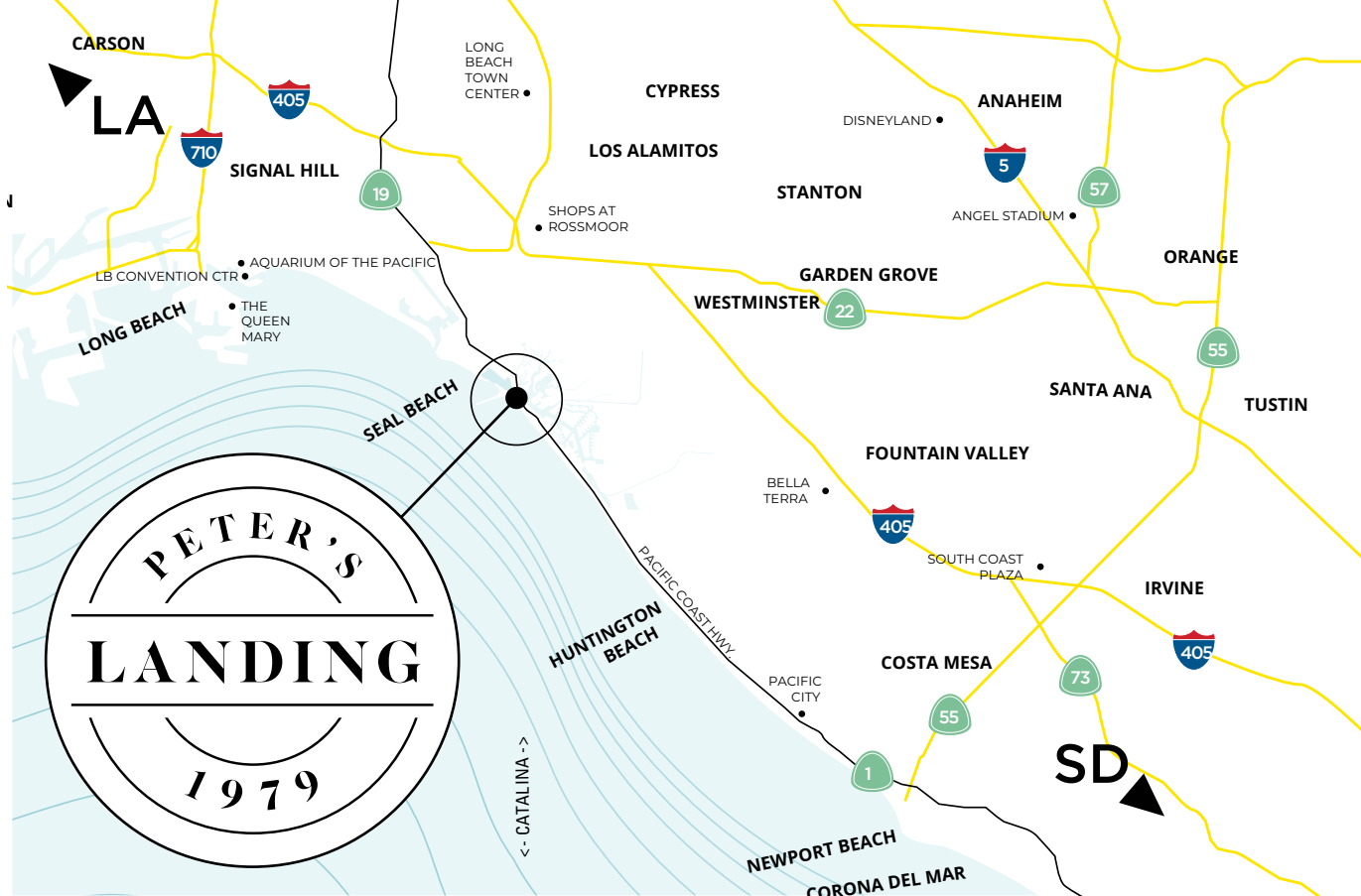
*PETER'S LANDING  
IS AN AUTHENTIC  
SOCAL LIFESTYLE.*



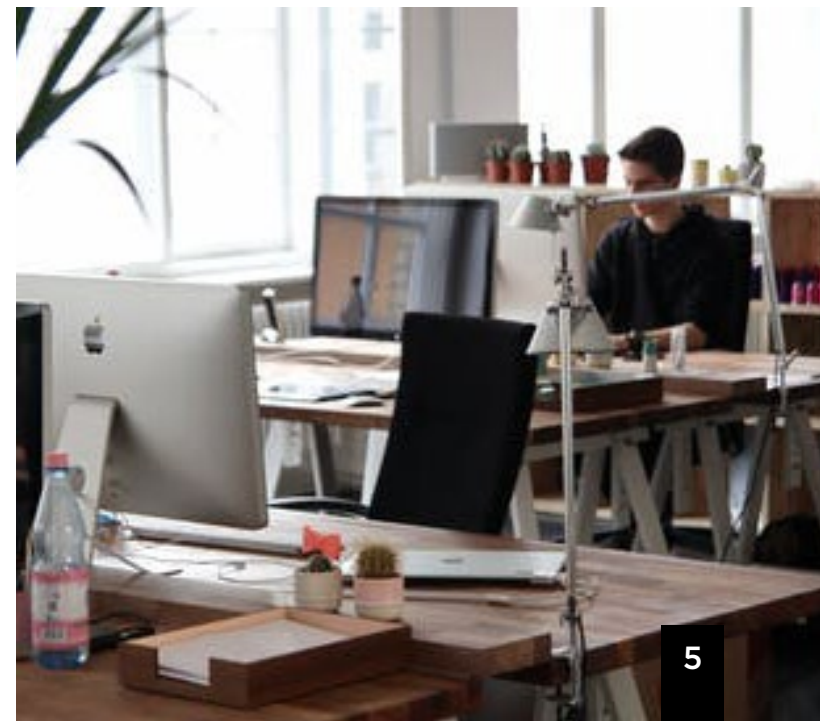
*Golden  
Road  
Brewery  
Now  
Open*

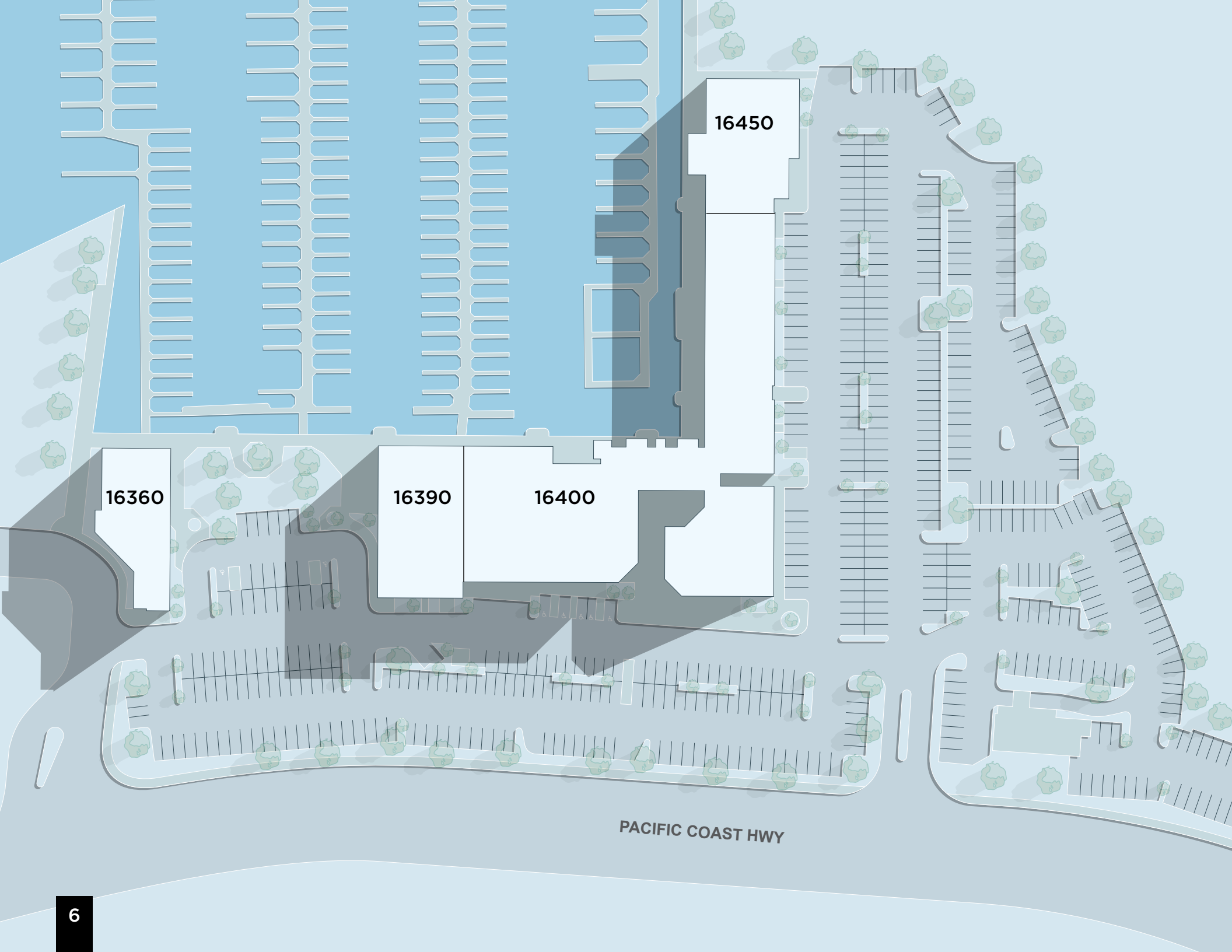






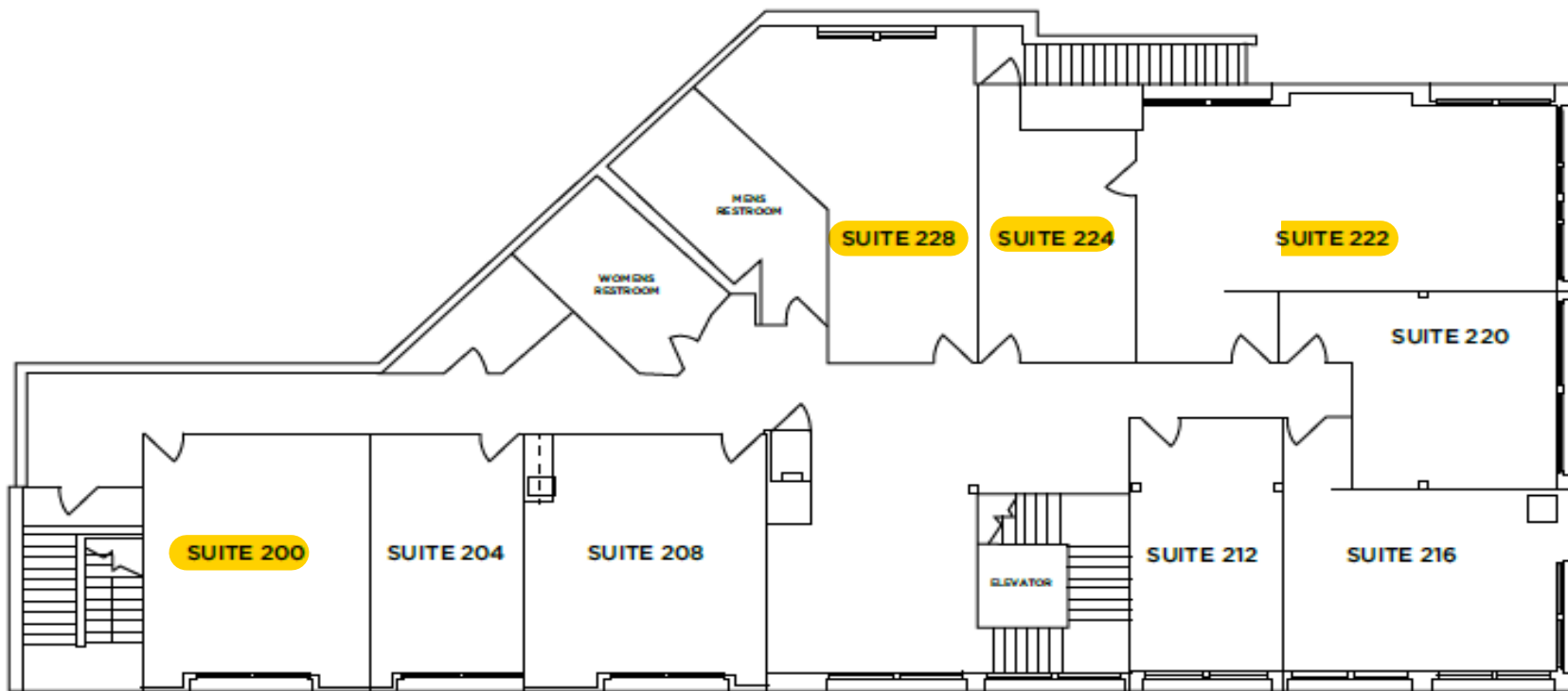
PREMIUM  
ON-SITE RETAIL  
AMENITIES.





## Building 16360 | Available Second Floor Office Spaces

Suite	Square Feet	Conditions
200	508 SF	Park and Marina Views. Available Immediately.
228	547 SF	Park and Marina Views. Available Immediately.
222/224	1,268 SF	Private Staircase, Suites Available Together or Separately, Available to Sublease.

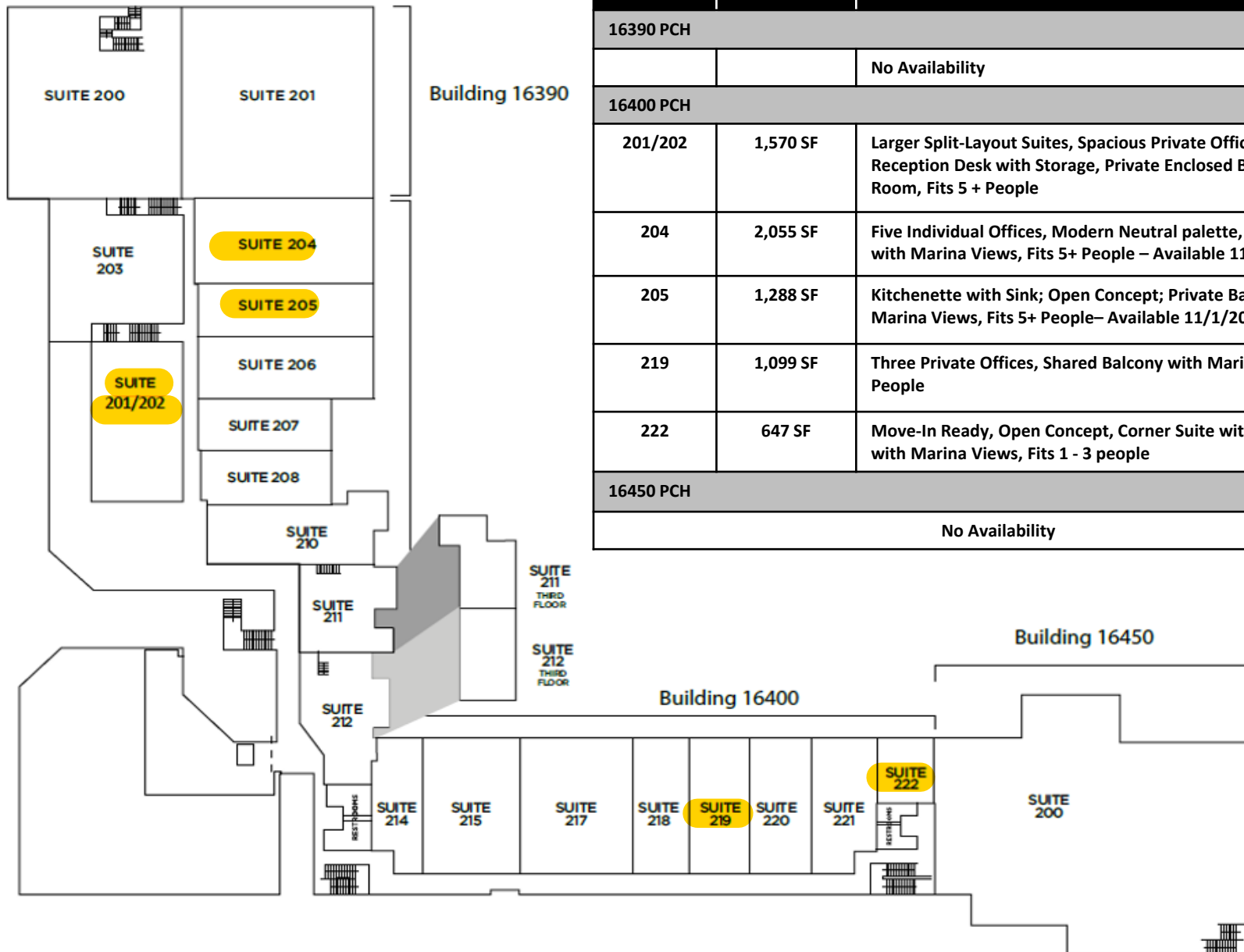








# Building 16390/16400/16450 | Available Second + Third Floor Office Spaces



Suite	Square Feet	Conditions
16390 PCH		
		No Availability
16400 PCH		
201/202	1,570 SF	Larger Split-Layout Suites, Spacious Private Office, Built-in Reception Desk with Storage, Private Enclosed Balcony, Storage Room, Fits 5 + People
204	2,055 SF	Five Individual Offices, Modern Neutral palette, Private Balcony with Marina Views, Fits 5+ People – Available 11/1/2025
205	1,288 SF	Kitchenette with Sink; Open Concept; Private Balcony with Marina Views, Fits 5+ People– Available 11/1/2025
219	1,099 SF	Three Private Offices, Shared Balcony with Marina Views, Fits 5+ People
222	647 SF	Move-In Ready, Open Concept, Corner Suite with Shared Balcony with Marina Views, Fits 1 - 3 people
16450 PCH		
No Availability		



