



4324

WILLOW SPRINGS RD

1,900 SF
FLEX / CREATIVE



LEASING CONTACTS

Merrick Ungar
512.270.9037
merrick@elmoarts.com

ELMOARTS.COM

Adam Zimmerman
512.270.1869
adam@elmoarts.com

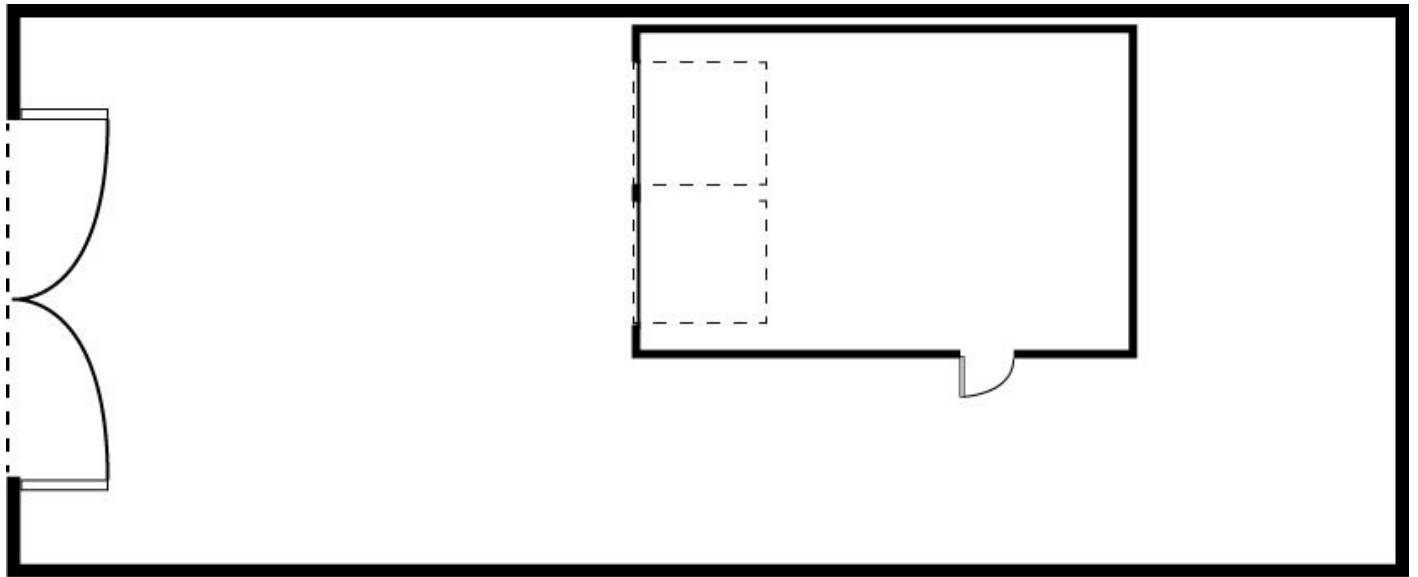
100% HVAC
0.22 ACRE LOT

**AVAILABLE
NOW**

4324 WILLOW SPRINGS RD



4324 WILLOW SPRINGS RD



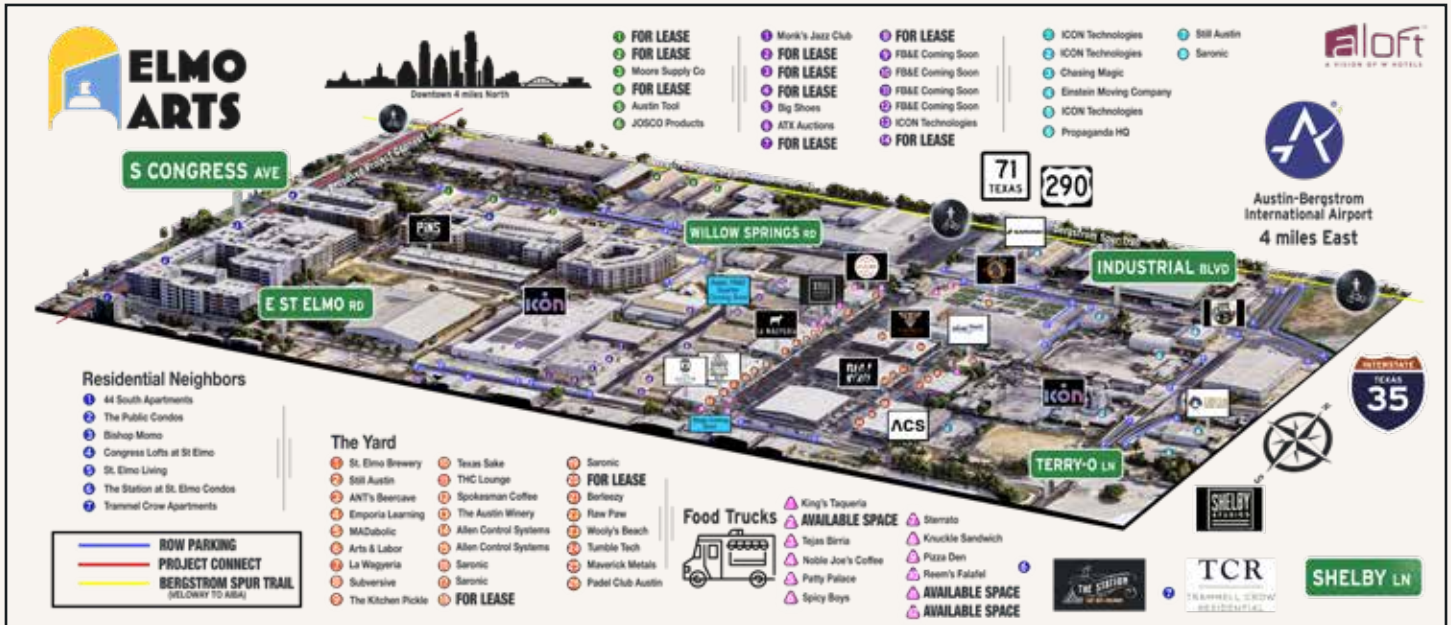
AMENITIES

- Fenced in private courtyard
- Bay doors
- Parking



4324 WILLOW SPRINGS RD

ST. ELMO DISTRICT



ABOUT THE DISTRICT

The St. Elmo District is South Austin's hotspot for food, drinks, entertainment, and innovation, just four miles south of downtown. Located between South Congress, Highway 71, and I-35, it's easily accessible to downtown, East Austin, and Austin-Bergstrom International Airport. Nestled within the St. Elmo District are unique businesses like St. Elmo Brewing, Spokesman Coffee, and Pins Mechanical plus many new high-end apartment complexes supporting the growth of the district.

ABOUT ELMO ARTS

Elmo Arts specializes in creative flex spaces that grow and adapt with the businesses inside them.

Our goal is to build the Austin of tomorrow while preserving the spirit of the city we know and love. What started with The Yard has expanded to over 40 acres of vibrant, community-focused spaces in the St. Elmo District.

We own and manage all of our properties, which means no layers of red tape — just fast decisions, honest conversations, and partners who show up.





4324

WILLOW SPRINGS RD

1,900 SF

FLEX / CREATIVE



LEASING CONTACTS

Merrick Ungar
512.270.9037
merrick@elmoarts.com

ELMOARTS.COM

Adam Zimmerman
512.270.1869
adam@elmoarts.com

100% HVAC
0.22 ACRE LOT

**AVAILABLE
NOW**