

AVAILABLE

1600 PARKDALE

ROCHESTER, MI 48307



1600 PARKDALE

ROCHESTER

LEASE HIGHLIGHTS

- 1,834 SF available on mezzanine
- 3,664 SF available on ground floor
- Total 5,498 SF available
- 62 parking spaces on-site
- Well-maintained and managed
- Geothermal architectural design resulting in low utility rates
- Lease Rate: \$23.00/SF +Electric

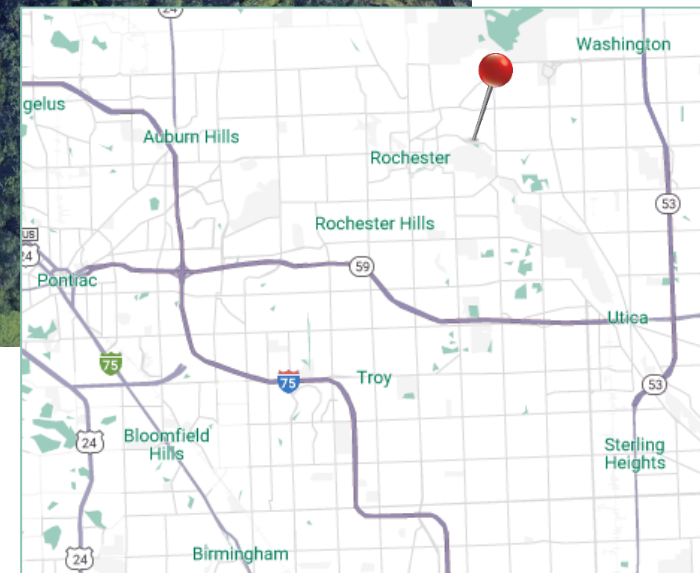
BUILDING HIGHLIGHTS

- Sits on 7.84 wooded acres along the Clinton River Trail
- Strong historical occupancy
- Excellent demographics
- Designed by French & Associates for their headquarters
- Recipient of an AIA Design Award by the American Institute of Architects



1600 PARKDALE

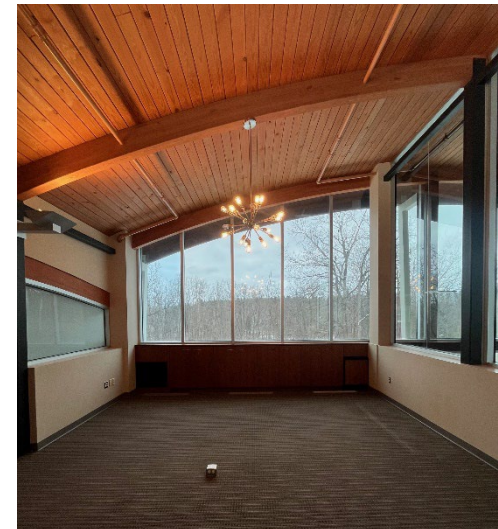
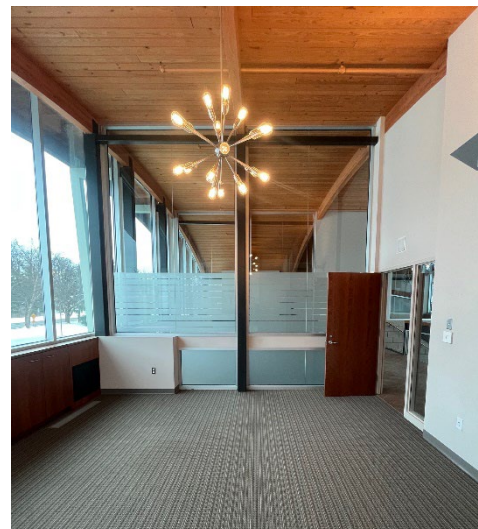
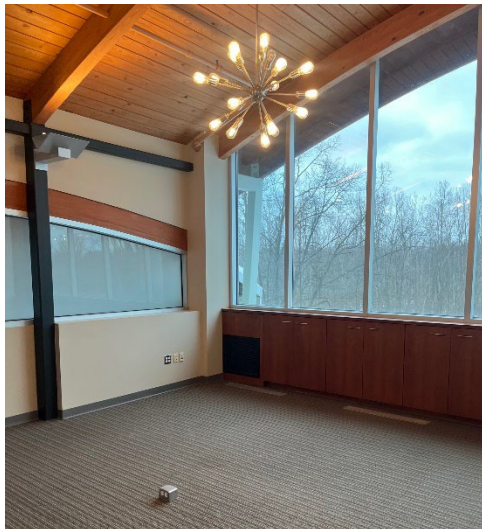
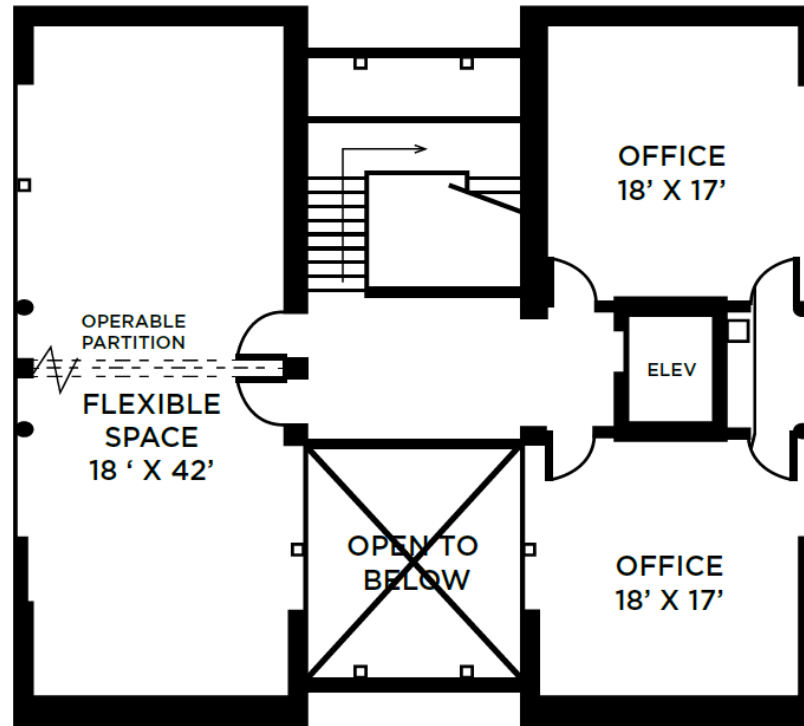
ROCHESTER



1600 PARKDALE

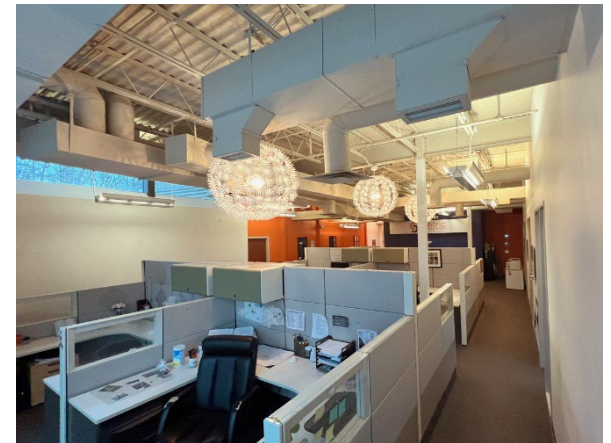
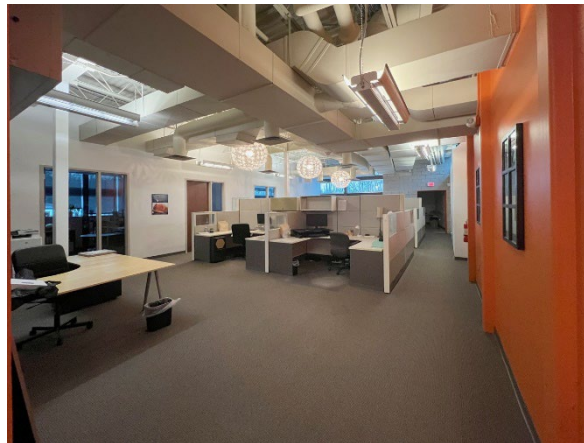
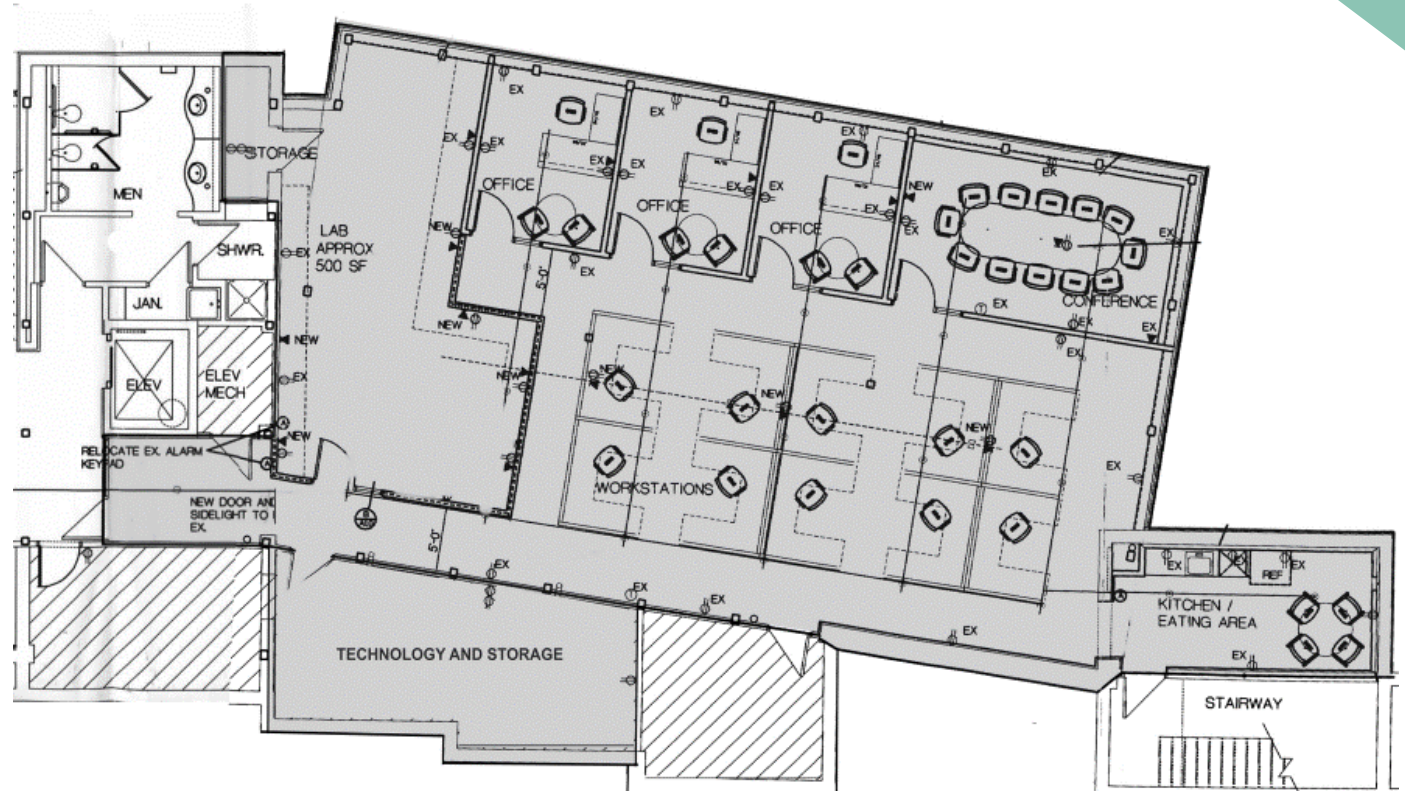
ROCHESTER

**MEZZANINE
FLOORPLAN**
1,834 SF



1600 PARKDALE ROCHESTER

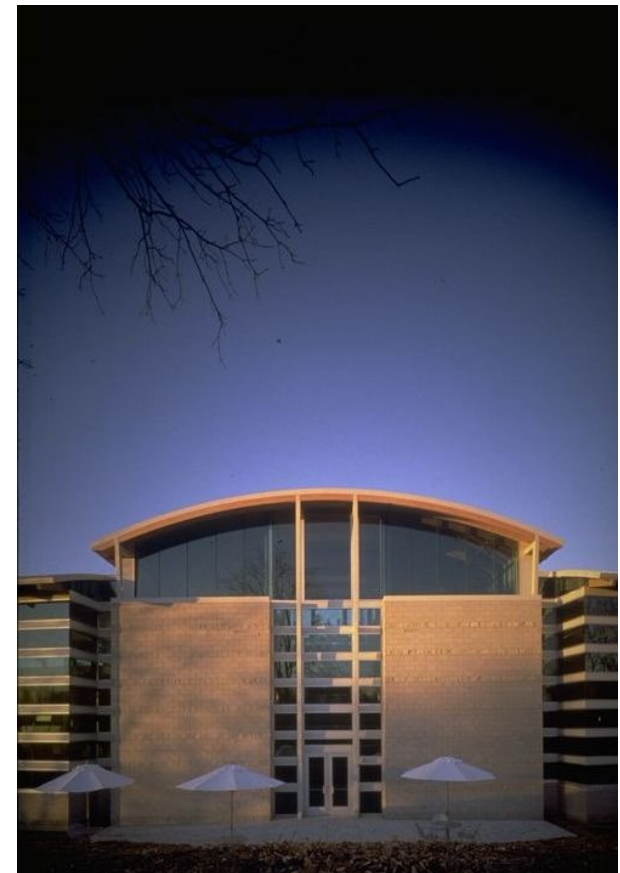
GROUND FLOORPLAN 3,664 SF



1600 PARKDALE

ROCHESTER

PHOTOS





FOR MORE INFORMATION, CONTACT:

John VanNoord
Senior Associate
+1 248 358 6106
john.vannoord@cushwake.com

Garrett Keais
Executive Managing Director
+1 248 358 6112
garrett.keais@cushwake.com

27777 Franklin Rd, Suite 1050
Southfield, MI 48034
main +1 248 358 6100
cushmanwakefield.com



©2025 Cushman & Wakefield. All rights reserved. The information contained in this communication is strictly confidential. This information has been obtained from sources believed to be reliable but has not been verified. NO WARRANTY OR REPRESENTATION, EXPRESS OR IMPLIED, IS MADE AS TO THE CONDITION OF THE PROPERTY (OR PROPERTIES) REFERENCED HEREIN OR AS TO THE ACCURACY OR COMPLETENESS OF THE INFORMATION CONTAINED HEREIN, AND SAME IS SUBMITTED SUBJECT TO ERRORS, OMISSIONS, CHANGE OF PRICE, RENTAL OR OTHER CONDITIONS, WITHDRAWAL WITHOUT NOTICE, AND TO ANY SPECIAL LISTING CONDITIONS IMPOSED BY THE PROPERTY OWNER(S). ANY PROJECTIONS, OPINIONS OR ESTIMATES ARE SUBJECT TO UNCERTAINTY AND DO NOT SIGNIFY CURRENT OR FUTURE PROPERTY PERFORMANCE.