



PROPERTY HIGHLIGHTS

- Portland's first and only municipal Business Park
- Located directly off Exit 47 of I-95 for easy highway access
- Phase I with road and utilities complete; Planned Phase II
- Municipal sites available to accommodate 10,000-35,000± SF buildings in the Office Park Zone
- Low impact design, with natural woodland features and connection to forested trail systems
- Financing - SBA 504 eligible

FOR SALE | PORTLAND TECHNOLOGY PARK

TECHNOLOGY PARK DRIVE, PORTLAND, ME 04101



PROPERTY INFORMATION

UNIT	ACRES	POTENTIAL BUILDING SIZE	MAX PARKING SPACES	SALE PRICE
Unit 1	3.47±	Up to 33,000± SF (16,500± SF Footprint)	80	\$400,000
Unit 2	1.36±	10,000± SF	40	\$275,000
Unit 3	1.66±	10,000± SF	32	\$240,000
Unit 4		SOLD		
Unit 5	1.29±	10,000± SF	40	\$250,000
Unit 6 & 7	2.93±	Up to 35,000± SF (17,500± SF Footprint)	121	\$595,000
Unit 7	1.74±	Up to 20,000± SF (10,000± SF Footprint)	81	\$350,000

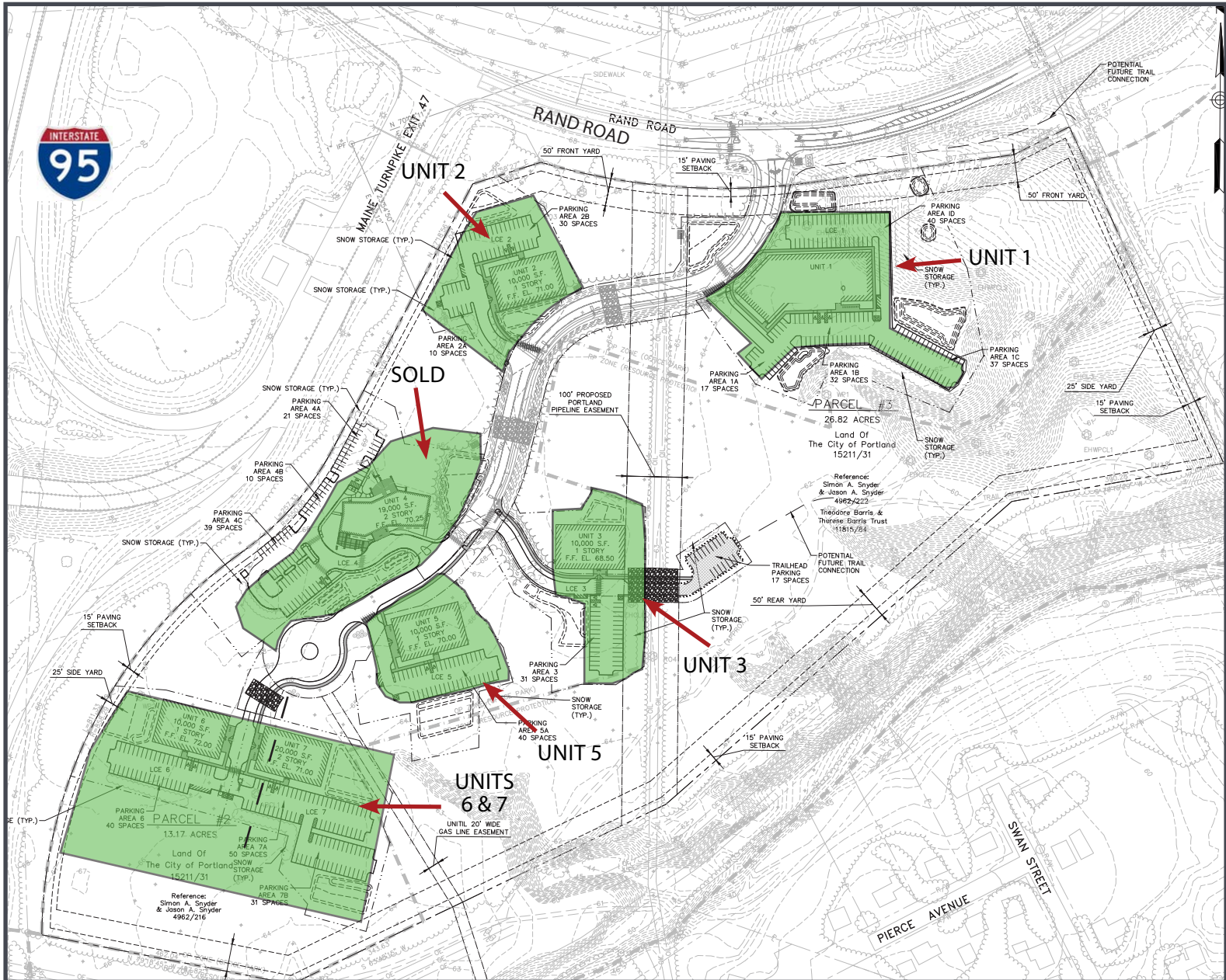


FOR SALE | PORTLAND TECHNOLOGY PARK

TECHNOLOGY PARK DRIVE, PORTLAND, ME 04101



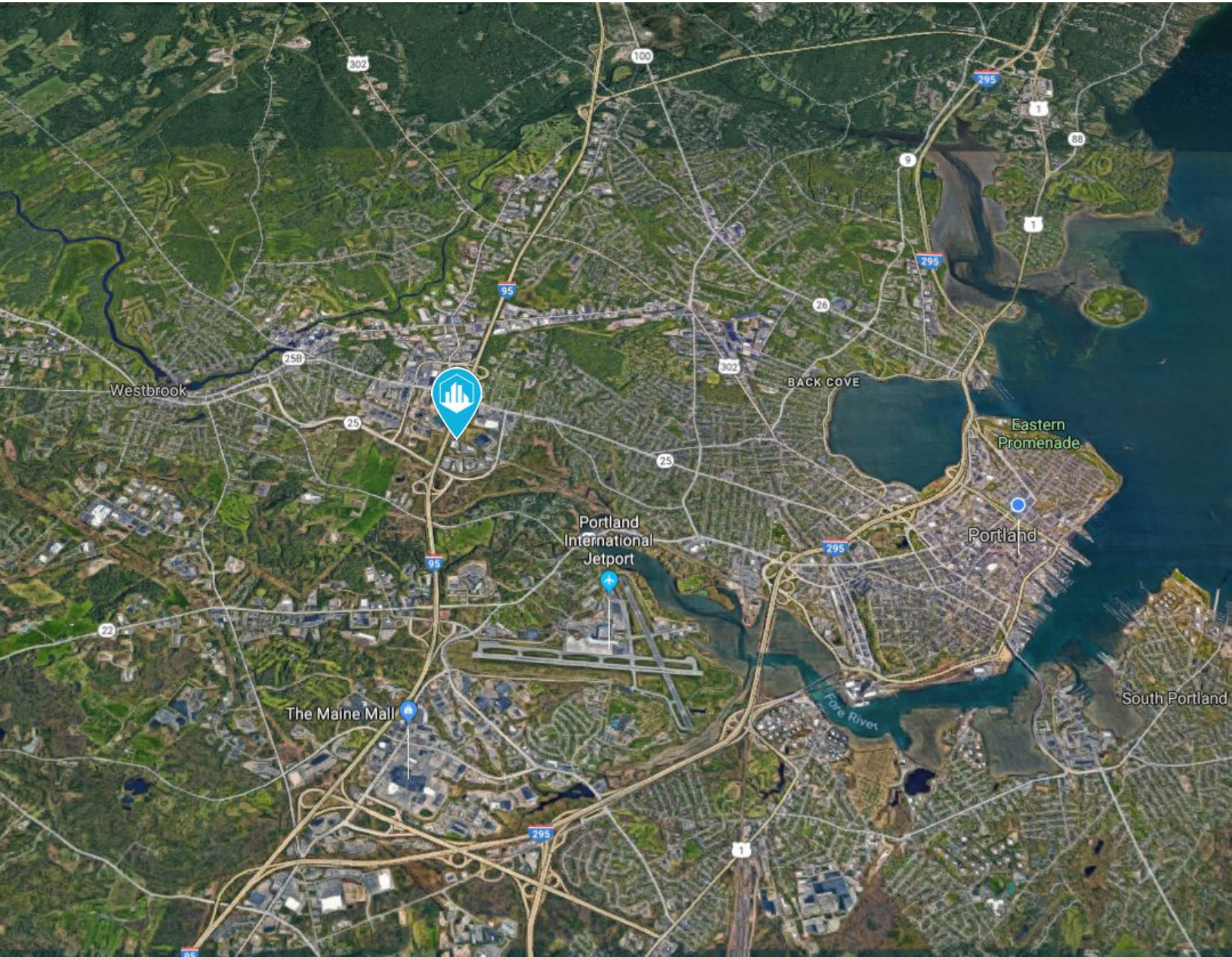
SITE PLAN



[Patrons Oxford Insurance Company
Unit 4 (Sold)]

FOR SALE | PORTLAND TECHNOLOGY PARK

TECHNOLOGY PARK DRIVE, PORTLAND, ME 04101



CONTACT US



NATE STEVENS
Partner, Designated Broker

+1 207.553.1702 D
+1 207.272.2385 C
nstevens@boulos.com



SAMANTHA MARINKO
Associate

+1 207.553.1723 D
+1 908.433.5049 C
smarinko@boulos.com

©2024 The Boulos Company, Inc. All rights reserved. This information has been obtained from sources believed reliable, but has not been verified for accuracy or completeness. You should conduct a careful, independent investigation of the property and verify all information. Any reliance on this information is solely at your own risk. The Boulos Company and The Boulos Company logo are service marks of The Boulos Company, Inc. All other marks displayed on this document are the property of their respective owners. Photos herein are the property of their respective owners. Use of these images without the express written consent of the owner is prohibited.