



**LEASE**

# Chatham Center Orlean

**6001 CHATHAM CENTER DR**

Savannah, GA 31405

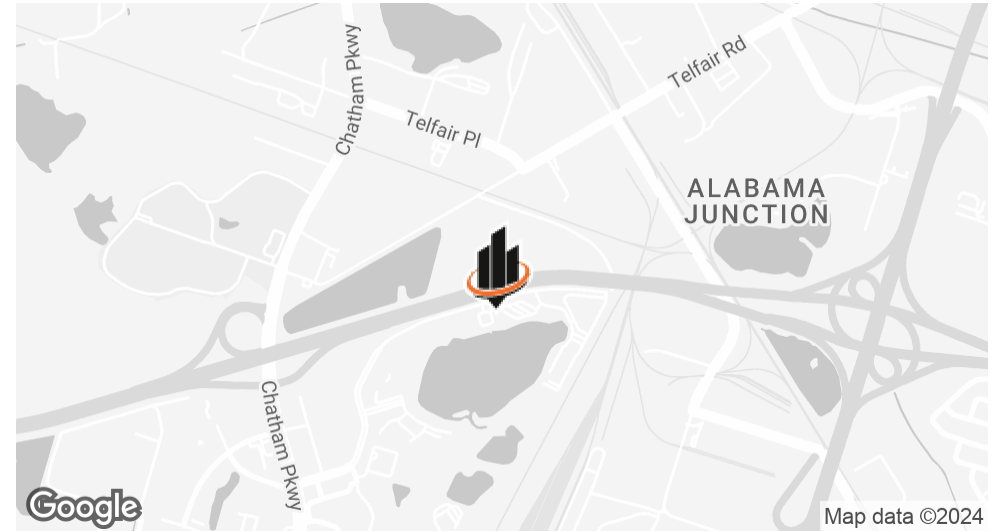
**PRESENTED BY:**

**JAMES ( JIM ) BRYANT**

O: 912.353.4101

[jbryant@svn.com](mailto:jbryant@svn.com)

## PROPERTY SUMMARY



### OFFERING SUMMARY

<b>LEASE RATE:</b>	\$28.00 SF/yr (Gross)
<b>NUMBER OF UNITS:</b>	41
<b>AVAILABLE SF:</b>	2,515 SF
<b>LOT SIZE:</b>	285,184 SF
<b>BUILDING SIZE:</b>	60,930 SF

#### JAMES ( JIM) BRYANT

O: 912.353.4101

jbryant@svn.com

### PROPERTY DESCRIPTION

SVN is pleased to offer space for lease at the Chatham Center, Savannah's only Class A business park. Situated on 200 acres, Chatham Center was the first to offer a complete business environment with a full range of contemporary convenience that the workday more enjoyable, efficient, productive - and profitable.

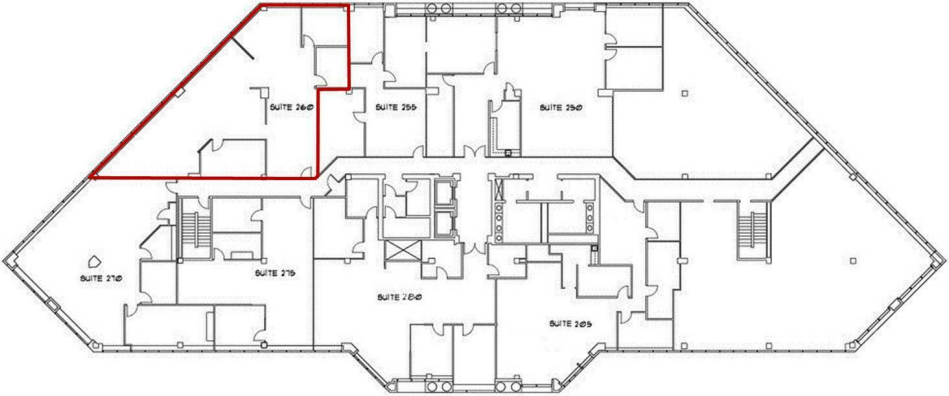
### PROPERTY HIGHLIGHTS

- 3-Buildings, Orlean, Liberty and Lafayette, comprising over 180,000 square feet of high quality office, distribution and showroom space, are clustered around beautifully landscaped plaza, recalling the town squares of Savannah's picturesque historic district. The 43-acre lake is Chatham Center's centerpiece. A jogging/walking path allows tenants to enjoy this special feature. Amenities include on-site management and maintenance, award winning landscaping, a conference center, locker and shower facilities.

**ADDITIONAL PHOTOS**



Suite 260 – 2,515 SF

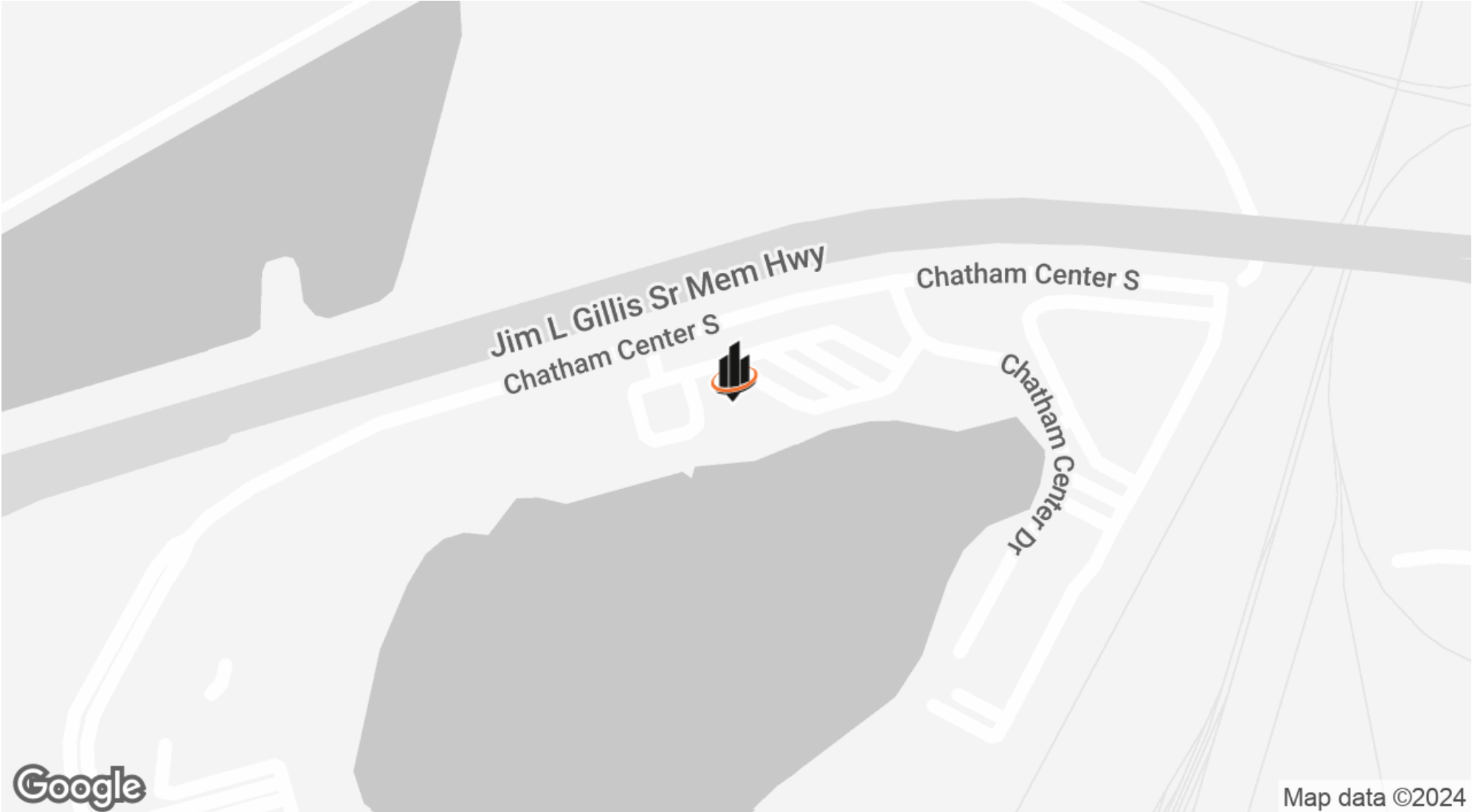


**JAMES ( JIM) BRYANT**

O: 912.353.4101

jbryant@svn.com

**LOCATION MAP**



**JAMES ( JIM) BRYANT**

O: 912.353.4101

jbryant@svn.com

# DEMOGRAPHICS MAP & REPORT

## POPULATION

0.3 MILES 0.5 MILES 1 MILE

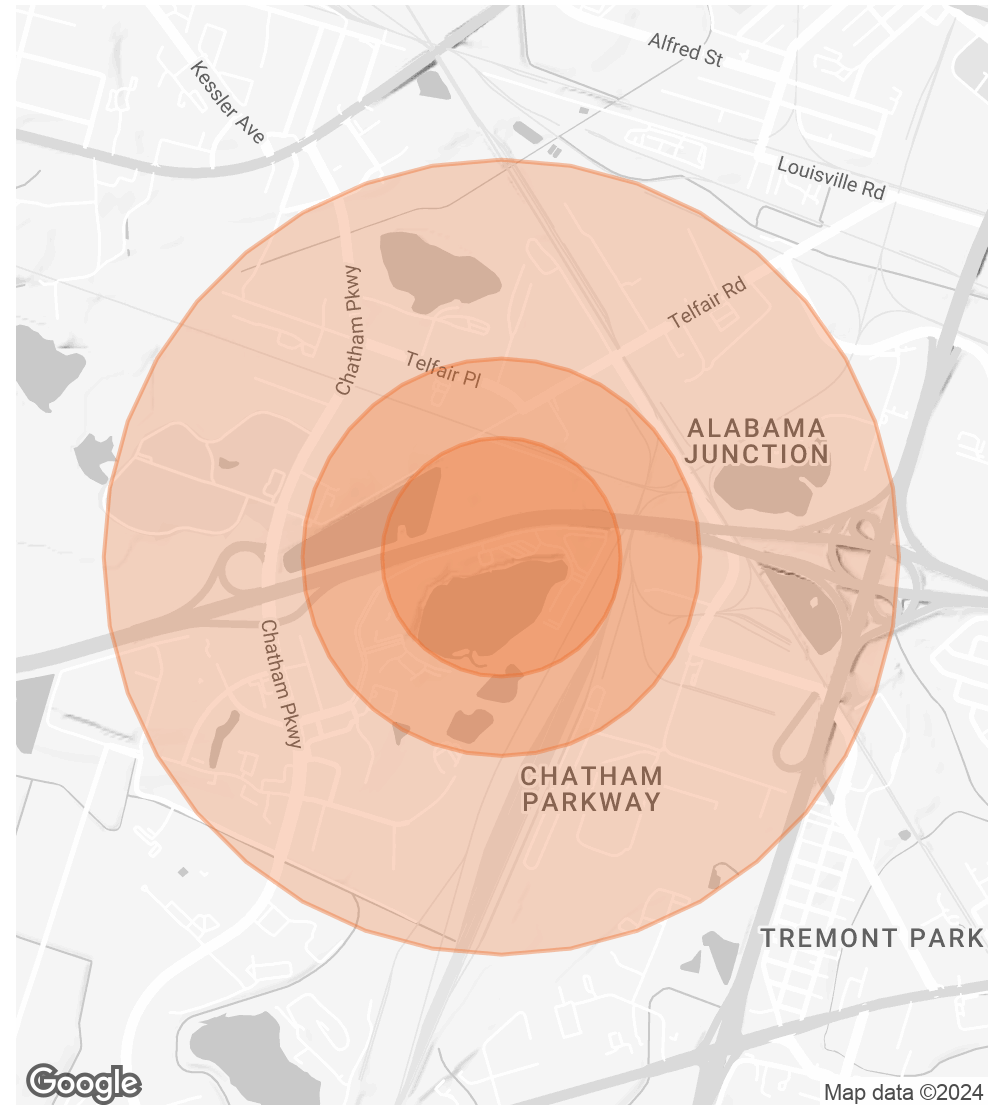
	0.3 MILES	0.5 MILES	1 MILE
TOTAL POPULATION	136	247	1,318
AVERAGE AGE	34	34	34
AVERAGE AGE (MALE)	35	35	35
AVERAGE AGE (FEMALE)	30	30	32

## HOUSEHOLDS & INCOME

0.3 MILES 0.5 MILES 1 MILE

	0.3 MILES	0.5 MILES	1 MILE
TOTAL HOUSEHOLDS	20	36	251
# OF PERSONS PER HH	6.8	6.9	5.3
AVERAGE HH INCOME	\$55,213	\$55,497	\$59,241
AVERAGE HOUSE VALUE	\$612,500	\$607,282	\$521,666

Demographics data derived from AlphaMap



**JAMES ( JIM) BRYANT**

O: 912.353.4101

jbryant@svn.com