



# One City Center

110 Corcoran Street

Space  
availability  
summary

WeWork @ 110 Corcoran Street  
Durham, NC

**wework**

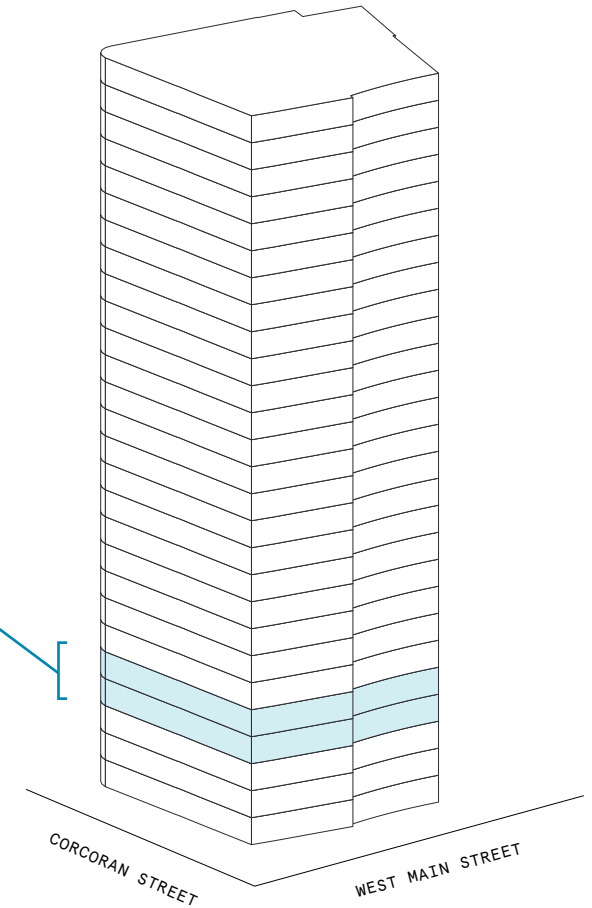
[VIEW VIRTUAL TOUR](#)

5th Floor 31,060 RSF

4th Floor 31,038 RSF

**62,098 RSF**

TOTAL WEWORK RSF



# One City Center

At a glance

Workspaces designed for productivity and creativity with flexible size & term

Dedicated, private offices available from 67 to 11,224 RSF

Move-in ready offices furnished & wired

**27**

TOTAL BUILDING FLOORS

**130,195**

TOTAL BUILDING SQ FT

All dimensions are approximate and subject to variances. It is your obligation to independently verify the particulars of the property. WeWork reserves the right to make changes.





Warm wood millwork and rich upholstery combine to create a comfortable lounge.



Oversized windows flood common areas with natural light and provide sweeping views of the surrounding cityscape.

## Upscale high-rise in Downtown Durham

---

One City Center is a Class-A office space in the heart of Durham's thriving Downtown district. The building itself is designed to reflect the city's raw and textured past with forward-looking, vibrant additions to the original building. These two floors utilize raw, concrete flooring, loft-like spaces, and dynamic furnishing to add a unique and vibrant flair to the city's modern tradition of adaptive reuse. With a mix of sleek private offices, light-filled lounges, and meeting rooms, this workspace is sure to spark creativity, productivity, and collaboration.





Royal blue pendant lights and banquette seating pop against a largely neutral backdrop.



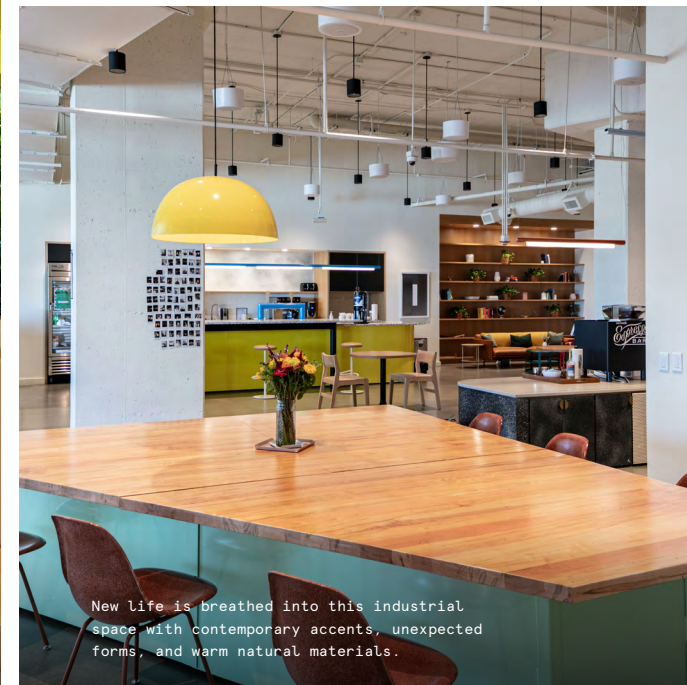
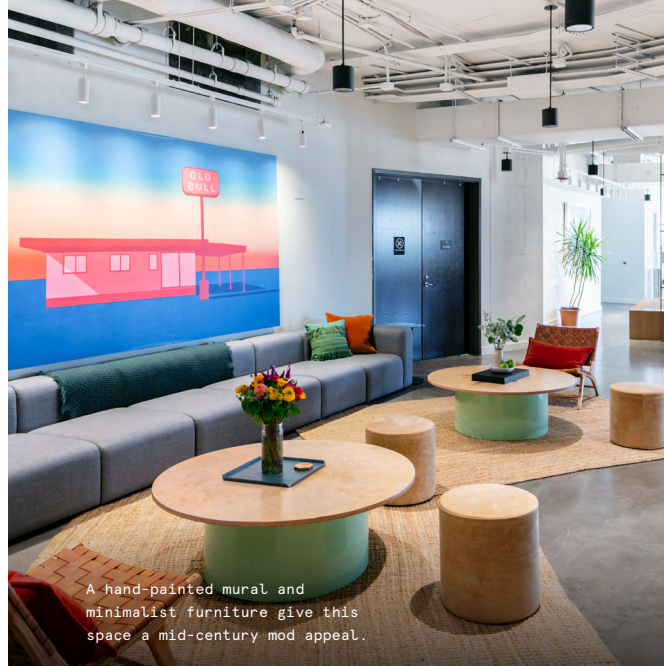
Plenty of greenery and golden wood warm this space's more industrial elements.



# A vibrant take on adaptive reuse

With a unique industrial-meets-artistic design, One City Center marries rich materials and bold colors with raw concrete flooring and warm wooden built-ins. Its combination of sleek, traditional office furnishings with unexpected fixtures and décor makes for a creative workspace.

- The bright yellow communicating staircase with leather seating at its base encourages connection between spaces and members
- A full-bleed, hand-painted mural in bold colors serves as a backdrop to the original concrete finish of the Community Desk
- A bold and bright palette - featuring deep blues, yellows, reds and gold's are dotted throughout the furnishings, textiles and artwork







## On-site amenities

---

- Electronic keycard access
- Business-class printers
- Professional events
- Stocked pantry
- US mail drop
- On-site staff
- Meeting rooms
- New parent's room
- Phone booths
- Wellness/meditation rooms
- Event space
- Classroom space
- Recreational games
- Locker room with showers
- Dog-friendly spaces
- Supplemental HVAC and electric

# Building specifications

---



## Hours of operation

---

Monday – Friday: 8am–5pm



## Security

---

Attended lobby  
Monday – Friday: 9am–10pm  
Sunday: 12pm–10pm



## HVAC

---

Monday – Friday: 6am–7pm  
Saturday: 8am–3pm



## Building history

---

Built in 2017  
Developed by Austin Lawrence  
Partners



## Ceiling heights

---

17 feet slab-to-slab



## Fire strategy

---

Fully-sprinklered floors



## Building size

---

27 stories  
130,195 SF



## Elevators

---

2 passenger elevators  
1 freight elevator



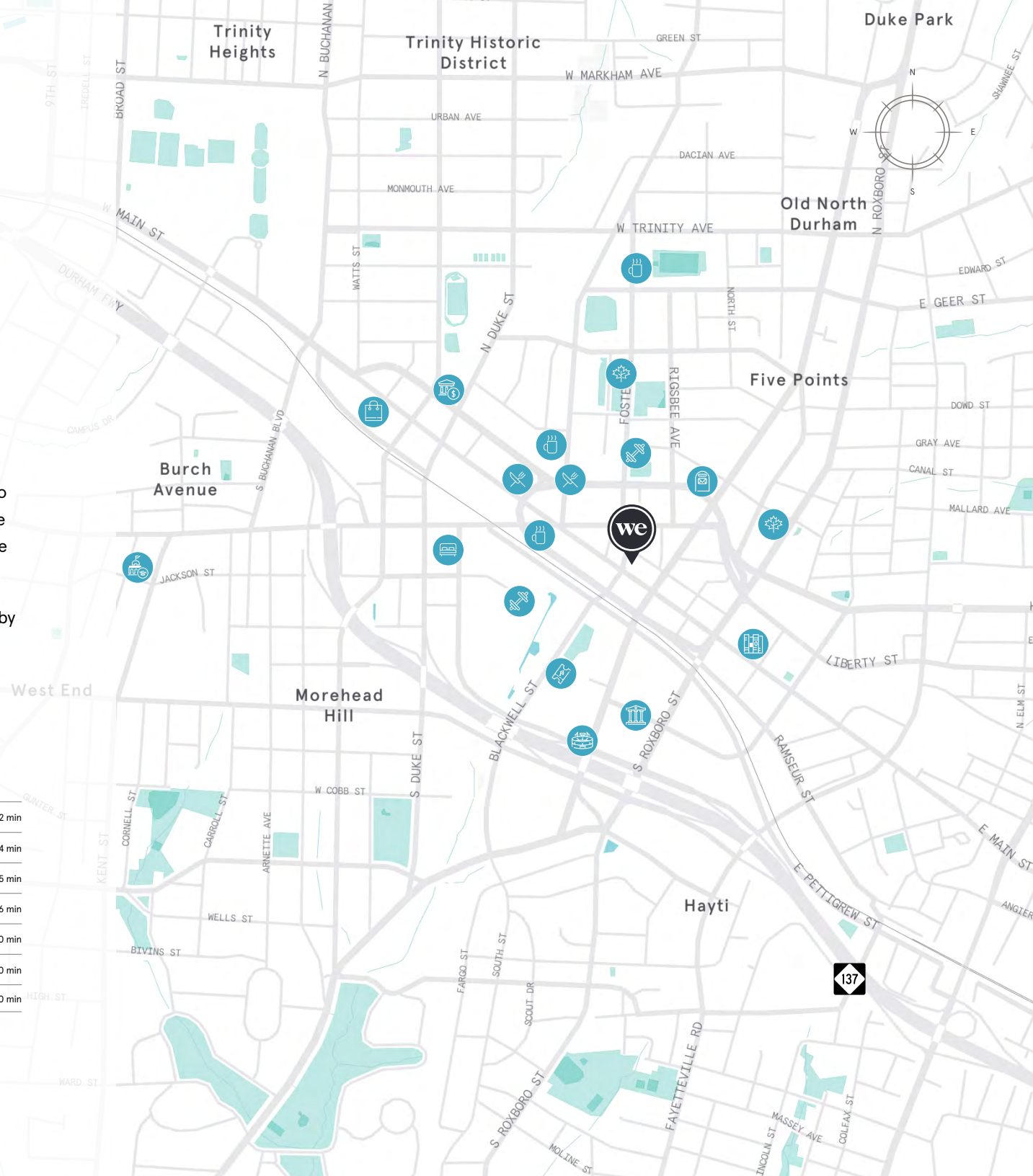
# Centrally located in Downtown Durham

110 Corcoran Street is conveniently located in the Durham city center. In just a short walk, members can enjoy a bite at Rue Cler or Luna Rotisserie and Empanadas or grab a coffee from The Oakhouse or Cocoa Cinnamon. Those in the city can explore the nearby Durham Performing Arts Center, the Museum of Life and Science, Durham Bulls Athletic Park, the County Main Library, and more. For those that want to shop might saunter to Brightleaf Square or peruse the Southpoint Mall. There is truly something for everyone just around the corner.

The commute will also be easily accessible, with nearby parking lots, bus stops, and train stations.

## Distance to WeWork

Corcoran Street Parking Garage		Walk	2 min
Durham Central Park		Walk	4 min
Durham Bulls Athletic Park		Walk	5 min
Duke University		Walk	6 min
Durham Station Bus Stop		Walk	10 min
Amtrak Durham		Walk	10 min
Raleigh-Durham International Airport		Drive	20 min





# 4th Floor

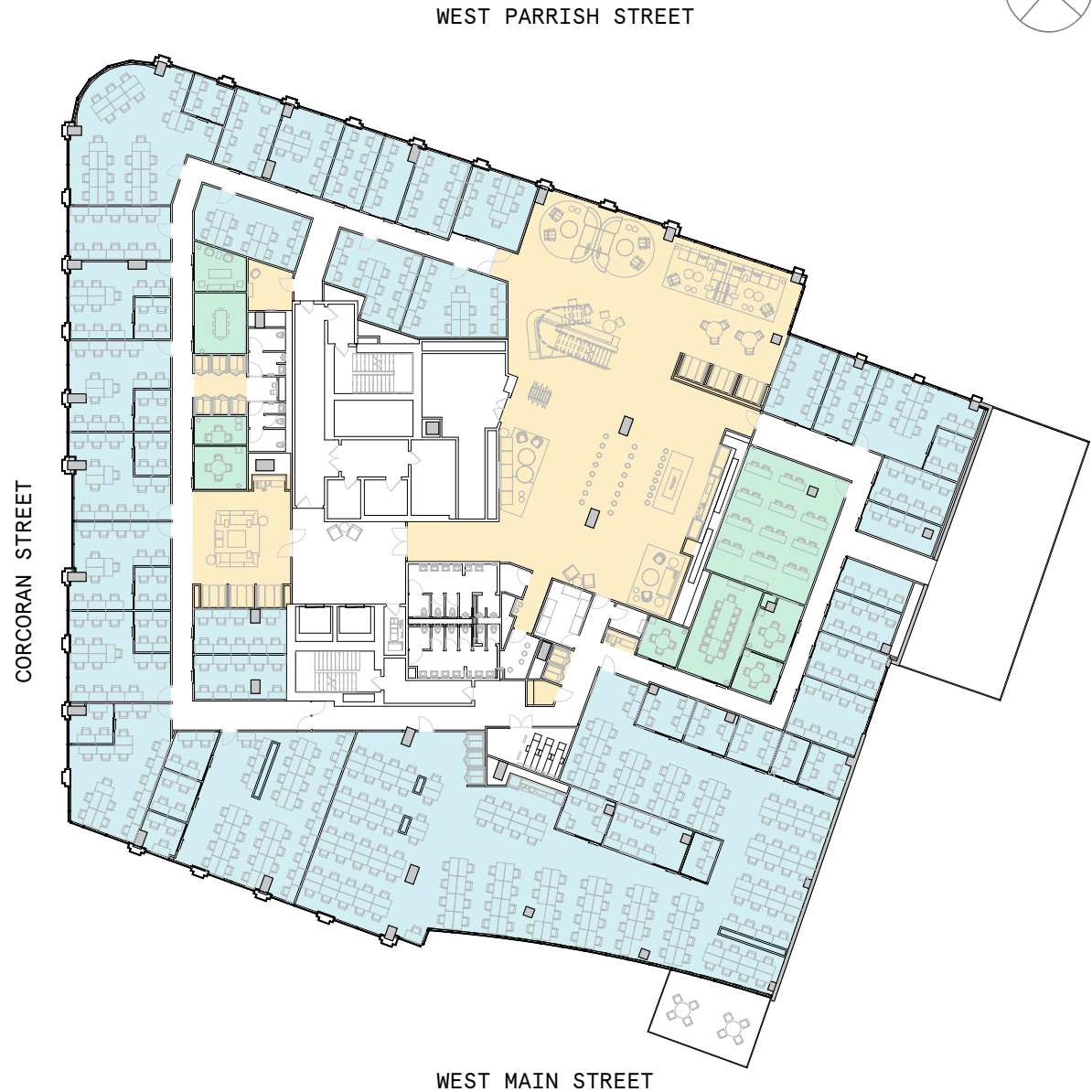
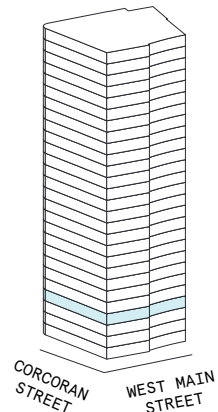
31,038 RSF

9  
MEETING ROOM(S)

5  
SHARED WORKSPACE(S)

## LEGEND

- MEETING ROOM
- SHARED WORKSPACE
- DEDICATED SPACE





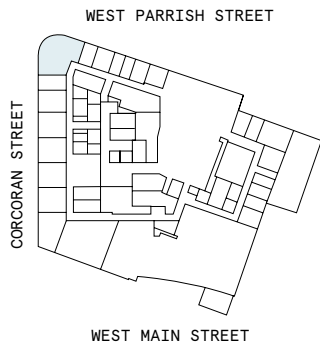
# 4th Floor

31,038 RSF

1,900 RSF Suite 04-110

1

PRIVATE OFFICE(S)





# Suite 04-110

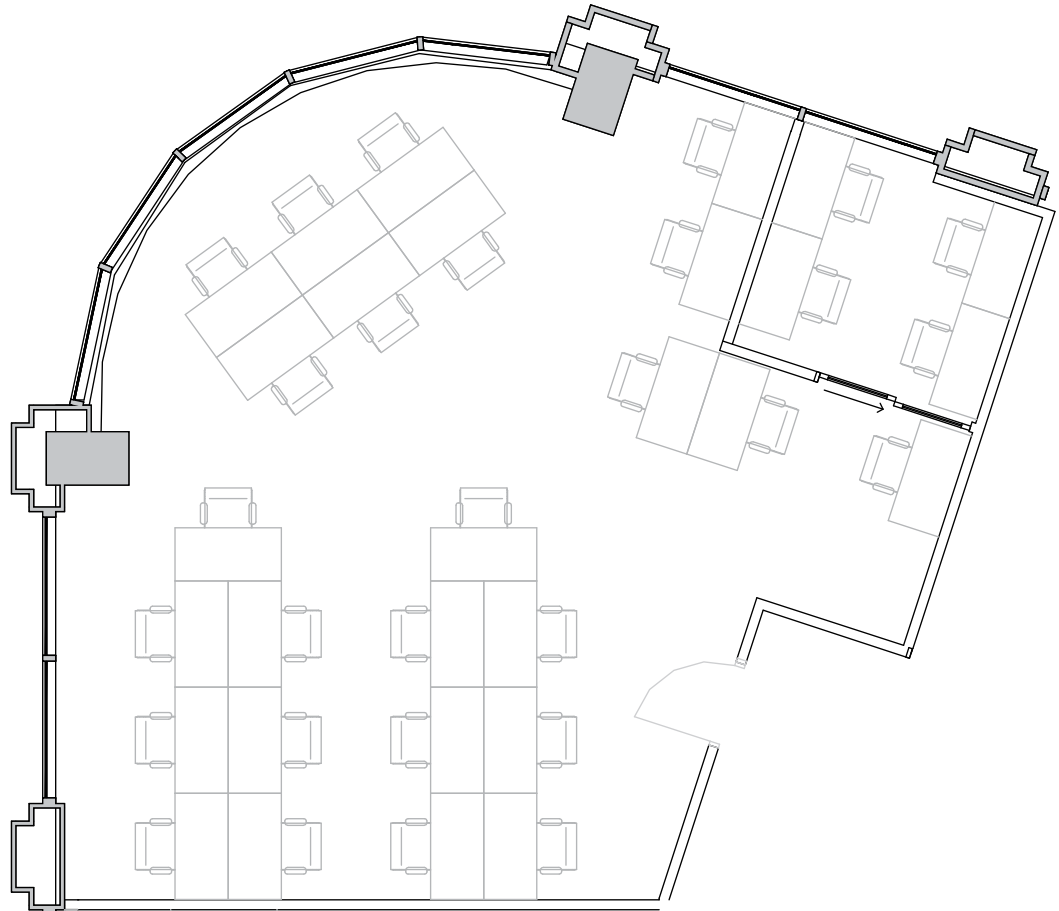
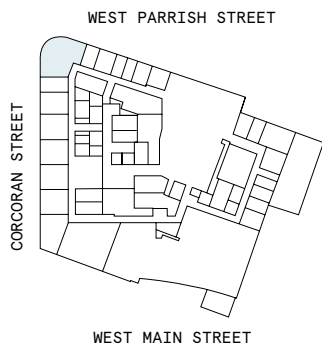
## 4th Floor

1

PRIVATE OFFICE(S)

1,900 RSF

RENTABLE AREA



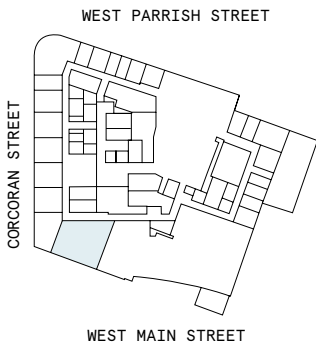


# 4th Floor

31,038 RSF

2,592 RSF Suite 04-120 WWLO

3  
PRIVATE OFFICE(S)





# Suite 04-120 WWLO

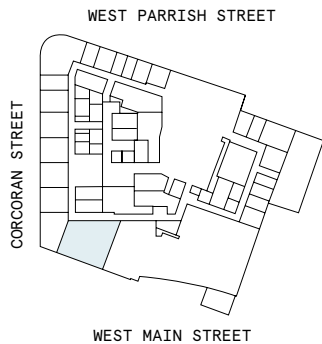
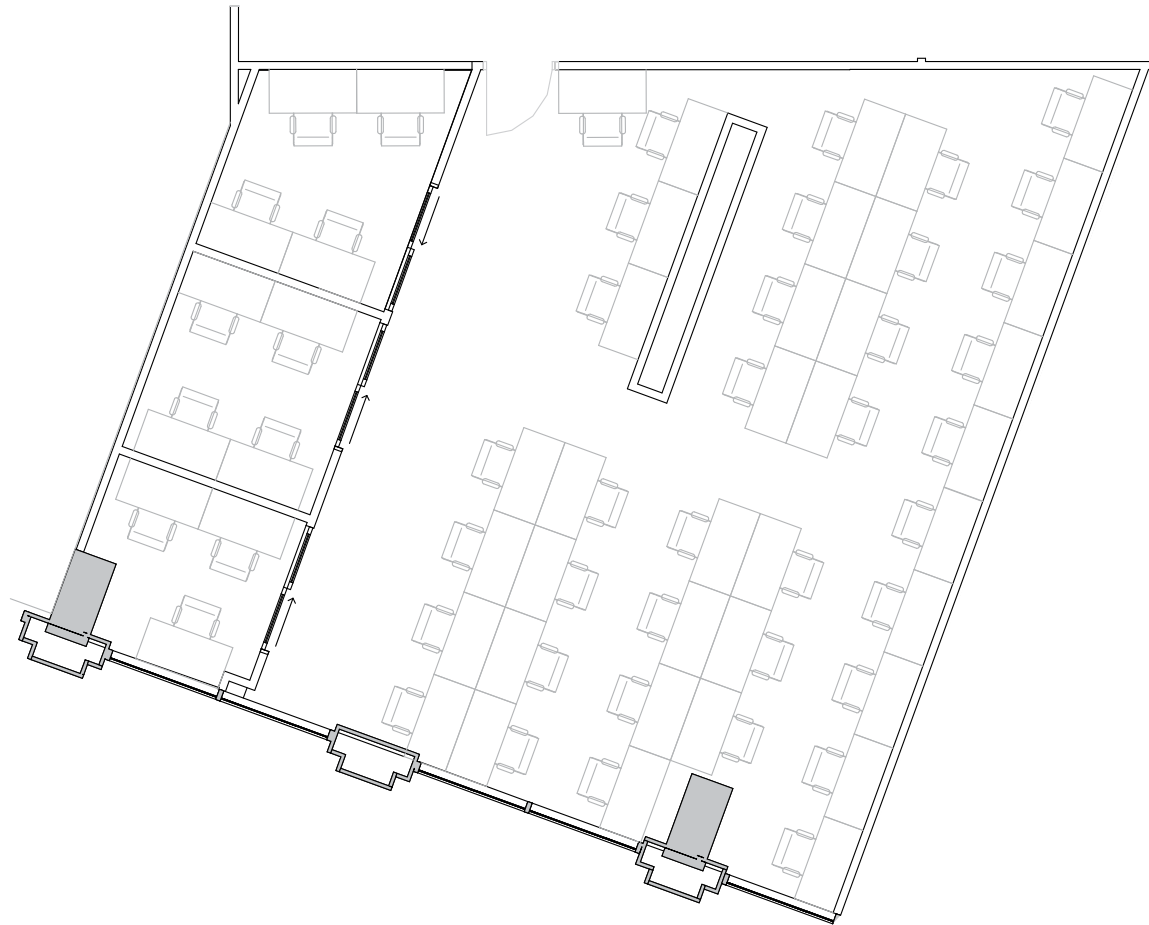
## 4th Floor

3

PRIVATE OFFICE(S)

2,592 RSF

RENTABLE AREA

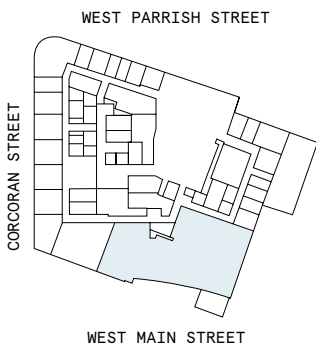


# 4th Floor

31,038 RSF

11,224 RSF Suite 04-121 WWLO

3  
PRIVATE OFFICE(S)





# Suite 04-121 WWLO

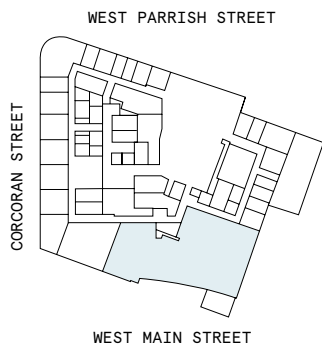
## 4th Floor

8

PRIVATE OFFICE(S)

11,224 RSF

RENTABLE AREA



# 5th Floor

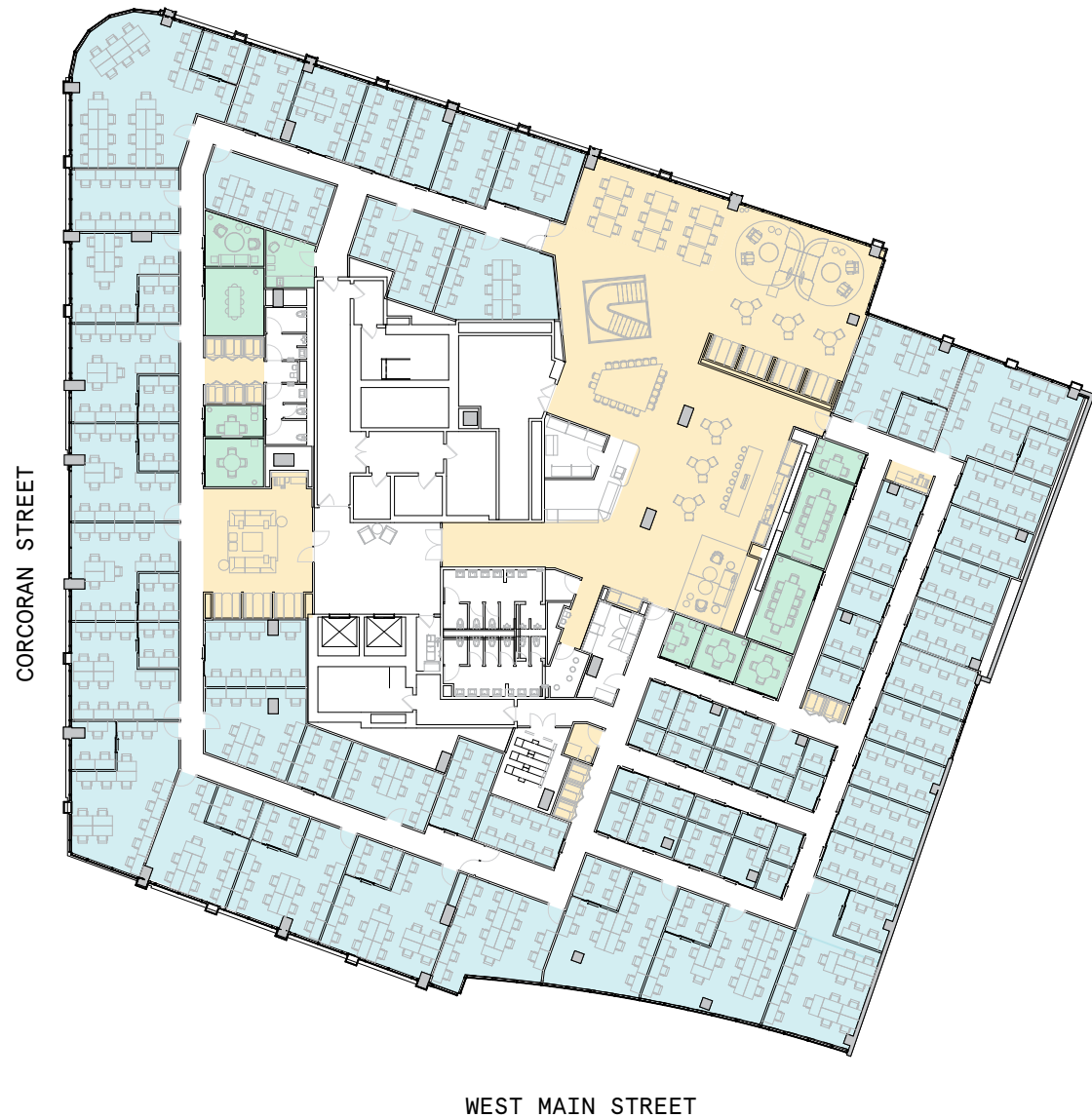
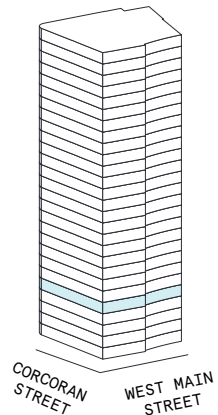
31,060 RSF

11  
MEETING ROOM(S)

6  
SHARED WORKSPACE(S)

## LEGEND

- MEETING ROOM
- SHARED WORKSPACE
- DEDICATED SPACE





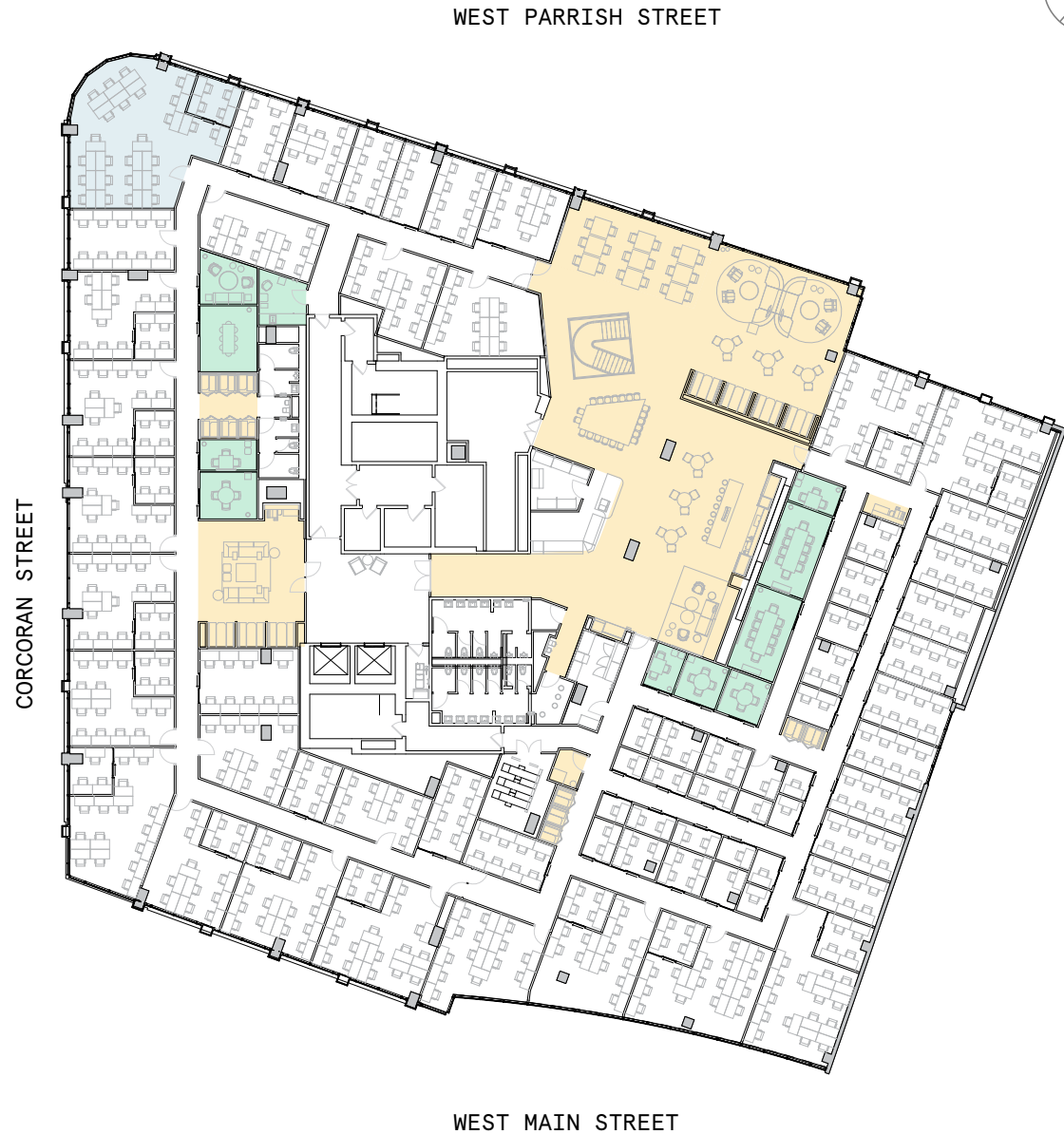
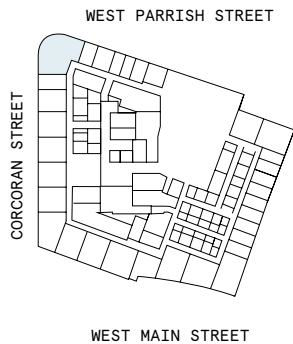
# 5th Floor

31,060 RSF

1,898 RSF Suite 05-110

1

PRIVATE OFFICE(S)



# Suite 05-110

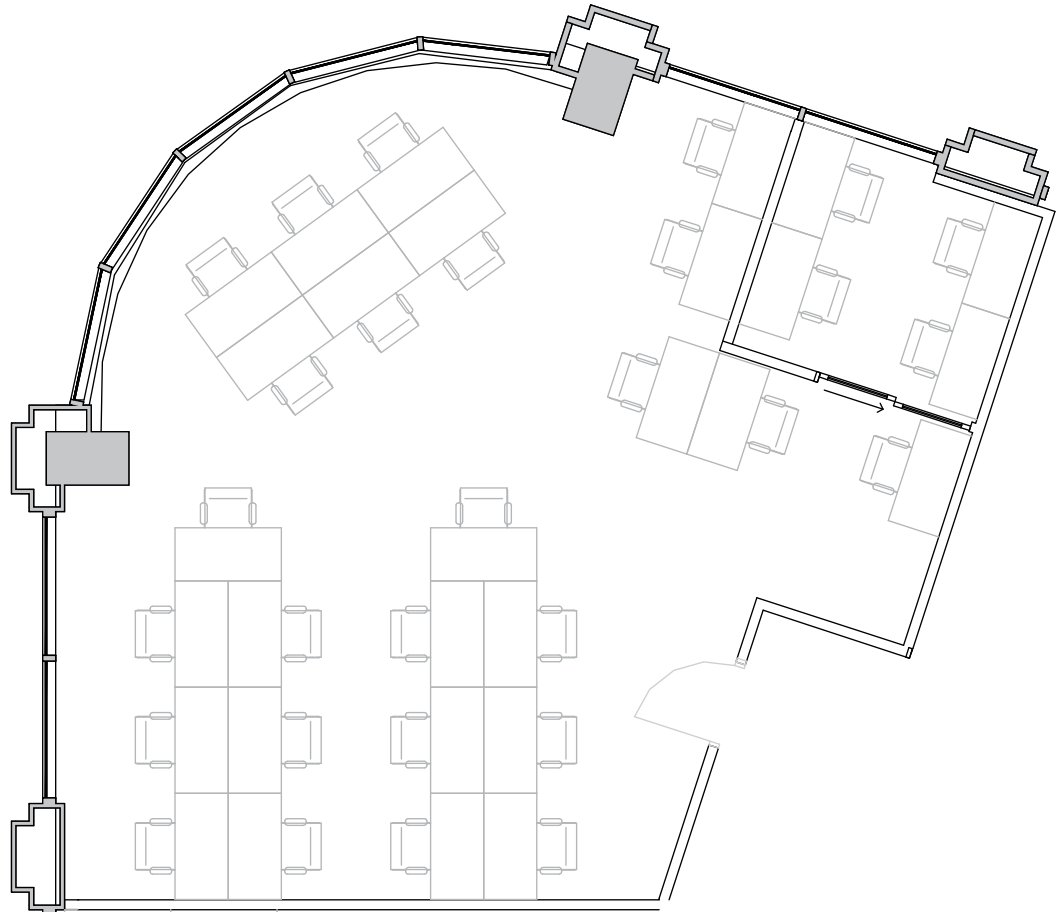
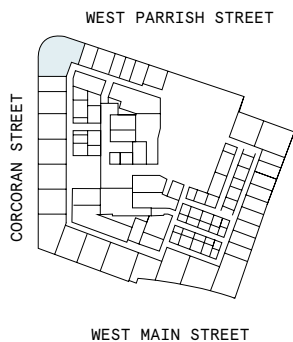
## 5th Floor

1

PRIVATE OFFICE(S)

1,898 RSF

RENTABLE AREA





# Contact

---

Complete the form [linked here](#) to book a tour or connect with one of our team members.



© 2023 WeWork. The WeWork trademark and related logos are the property of WeWork Companies LLC. Any reference to third-party names are for reference and informational purposes only and should not be considered an endorsement or association of WeWork or vice versa. Photographs contained herein may be representative examples of various WeWork locations and do not necessarily depict the WeWork location referenced. While reasonable efforts have been made to check the accuracy of the information contained here, WeWork, its officers, employees, directors, and representatives, make no warranty, express or implied, regarding the accuracy of the information and disclaim any liability arising from the use of the information contained herein. All dimensions are approximate and subject to variances. It is your obligation to independently verify the particulars of the property. WeWork reserves the right to make changes.