

# FORMER BANK BUILDING

3590 GEORGIA 20, CONYERS, GA 30013

# FOR LEASE

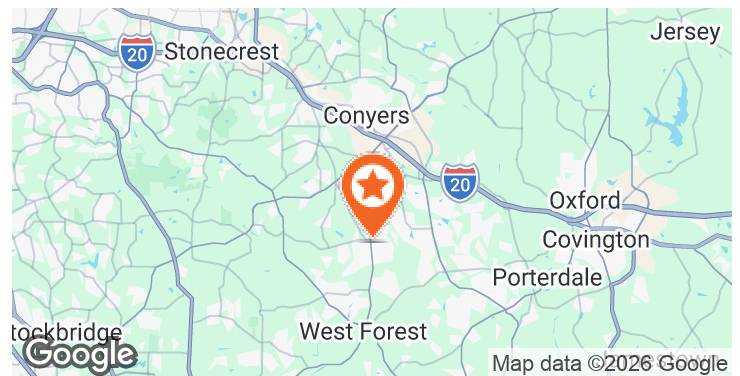



## LOCATION DESCRIPTION

Outparcel to grocery anchored center located in the heart of Conyers retail corridor

## PROPERTY HIGHLIGHTS

- Available: 3,170 SF former bank building with drive-thru situated on 1.21 acres
- Ample parking (38 spaces)
- Strong national and regional co-tenancy
- 950,000 visits annually (source: Placer.ai)
- GA DOT Traffic Counts: GA Hwy 20 - 33,700 AADT



 DEMOGRAPHICS	1 MILE	3 MILES	5 MILES
Population Density	5,699	41,940	91,041
Average HH Income	\$131,407	\$109,443	\$106,705
Daytime Population	4,636	33,038	83,252



**AMY KENNEDY**

amy.kennedy@tscg.com  
770.955.2434

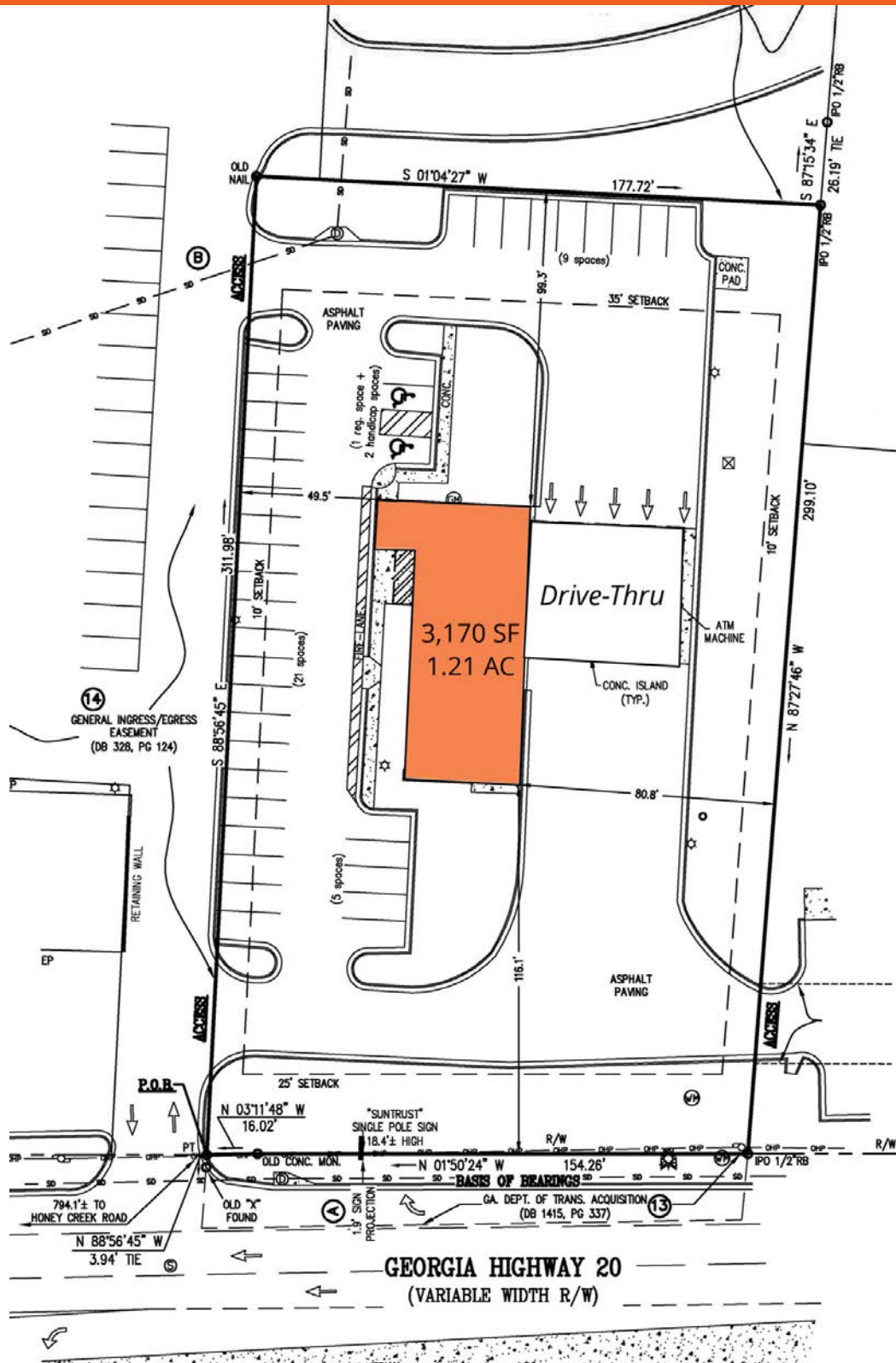
**KRIS MURPHY**

kris.murphy@tscg.com  
770.955.2434

# FORMER BANK BUILDING

# FOR LEASE

3590 GEORGIA 20, CONYERS, GA 30013



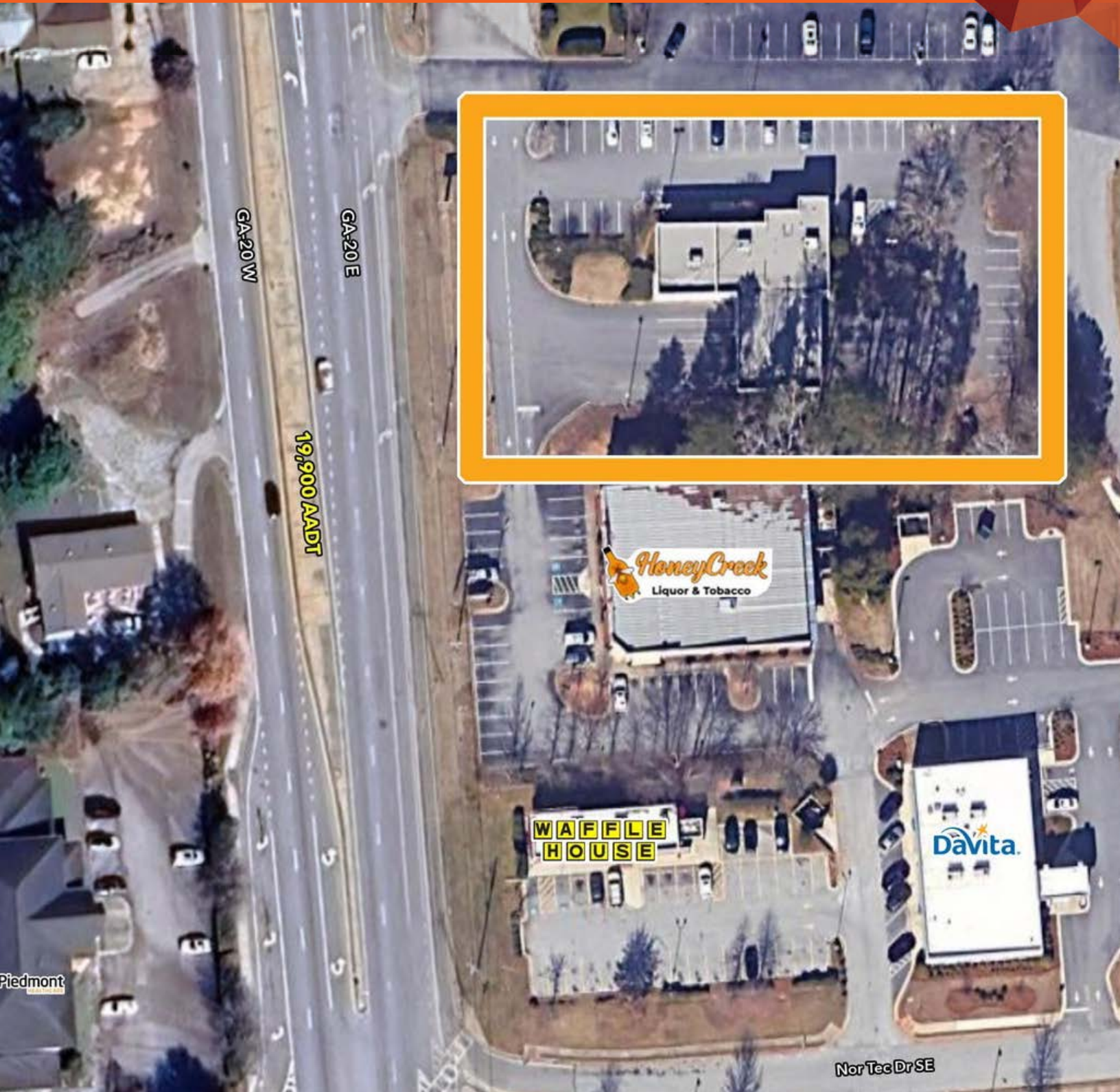
**AMY KENNEDY**  
amy.kennedy@tscg.com  
770.955.2434

**KRIS MURPHY**  
kris.murphy@tscg.com  
770.955.2434

# FORMER BANK BUILDING

# FOR LEASE

3590 GEORGIA 20, CONYERS, GA 30013



**AMY KENNEDY**

amy.kennedy@tscg.com  
770.955.2434

**KRIS MURPHY**

kris.murphy@tscg.com  
770.955.2434

# Conyers, GA

## Area Retail

March 2026

TSCG



© 2025 TSCG. All rights reserved. This map was produced using data from private and government sources and is for informational purposes only. The information herein is provided without representation or warranty. TSCG and its subsidiaries and affiliates are not responsible for any errors or omissions in this map.