

2200 DEFENSE HWY
CROFTON, MD 21114



Beautiful Class A Office - Last Suite Available! Professional & Medical Building

- 2,184 sqft suite – Open workplace flow
- Large office and large conference room
- Window lined offices – Lots of natural light
- Ability to add a sink or kitchenette
- Free and unassigned parking
- Close proximity to regional shopping centers with restaurants & cafes
- Located on MD-450 with easy access to RT-50 and MD RT-3
- **Lease Rate: \$26.50 (FULL SERVICE)**



EUGENIA ANTONIS

Commercial Salesperson

410-449-1199

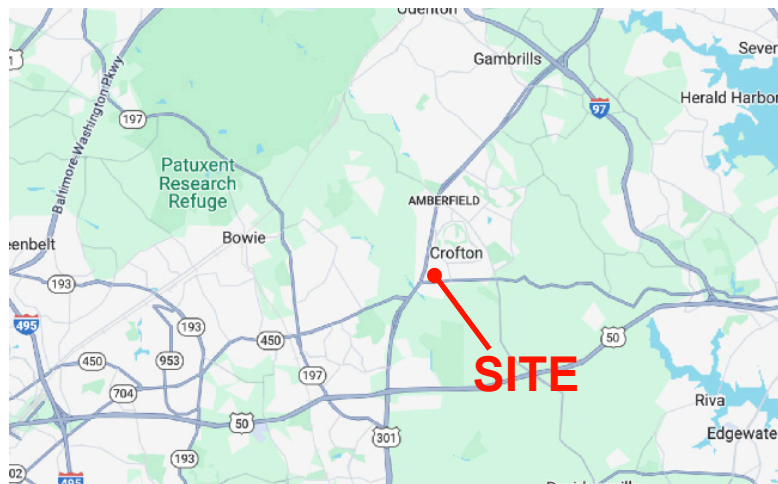
eantonis@friendre.com

MATTHEW ANTONIS

Commercial Salesperson

410-449-1072

mantonis@friendre.com



Main: 410-449-1144 · Fax: 410-983-3956 · friendre.com
8436 Veterans Hwy, Millersville, MD 21108

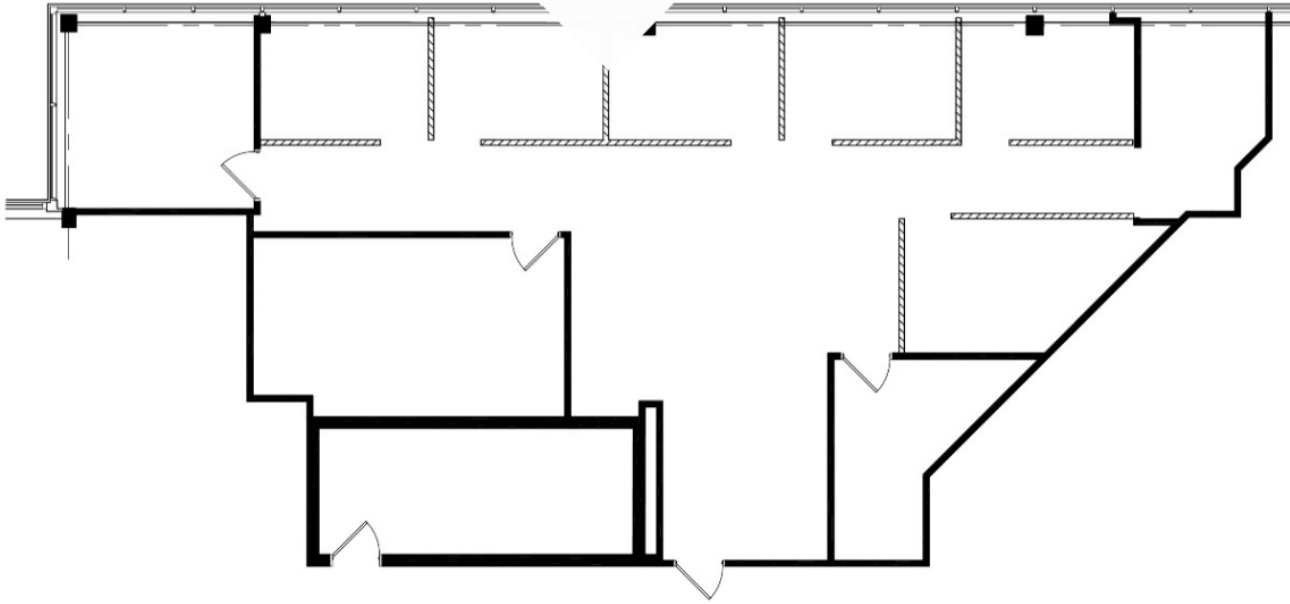
All information is from sources deemed reliable; However, we are not responsible for errors, omissions, misinterpretation, or misuse of information presented; We make no warranty of any kind, express or implied, with respect to the property or any other matters; Information and the property is subject to change, corrections, prior sales, or withdrawal.

2200 DEFENSE HWY
CROFTON, MD 21114



3D Tour

Suite 407 – 2,184 SF



Main: 410-449-1144 · Fax: 410-983-3956 · friendre.com

8436 Veterans Hwy, Millersville, MD 21108

All information is from sources deemed reliable; However, we are not responsible for errors, omissions, misinterpretation, or misuse of information presented; We make no warranty of any kind, express or implied, with respect to the property or any other matters; Information and the property is subject to change, corrections, prior sales, or withdrawal.