



# PAD SITE AND SHOP SPACE AVAILABLE

2665-2668 Richlands Hwy | Jacksonville, NC 33322



## PROJECT OVERVIEW

- Located directly off Richlands Hwy & Bridgett Lane on a heavy retail corridor of Jacksonville, NC.
- Bldg. 1: Approximately +/- 3,000 SF end cap
- Bldg. 2: Approximately +/- 4,000 SF end cap
- Traffic Counts: 18,500 AADT
- Access: Full Movement
- Area Retailers include:  
Chipotle, Starbucks, Walmart, Lowe's, Aldi, and more!



## CAMP LEJEUNE DEMOGRAPHICS



Active Duty: 34,095







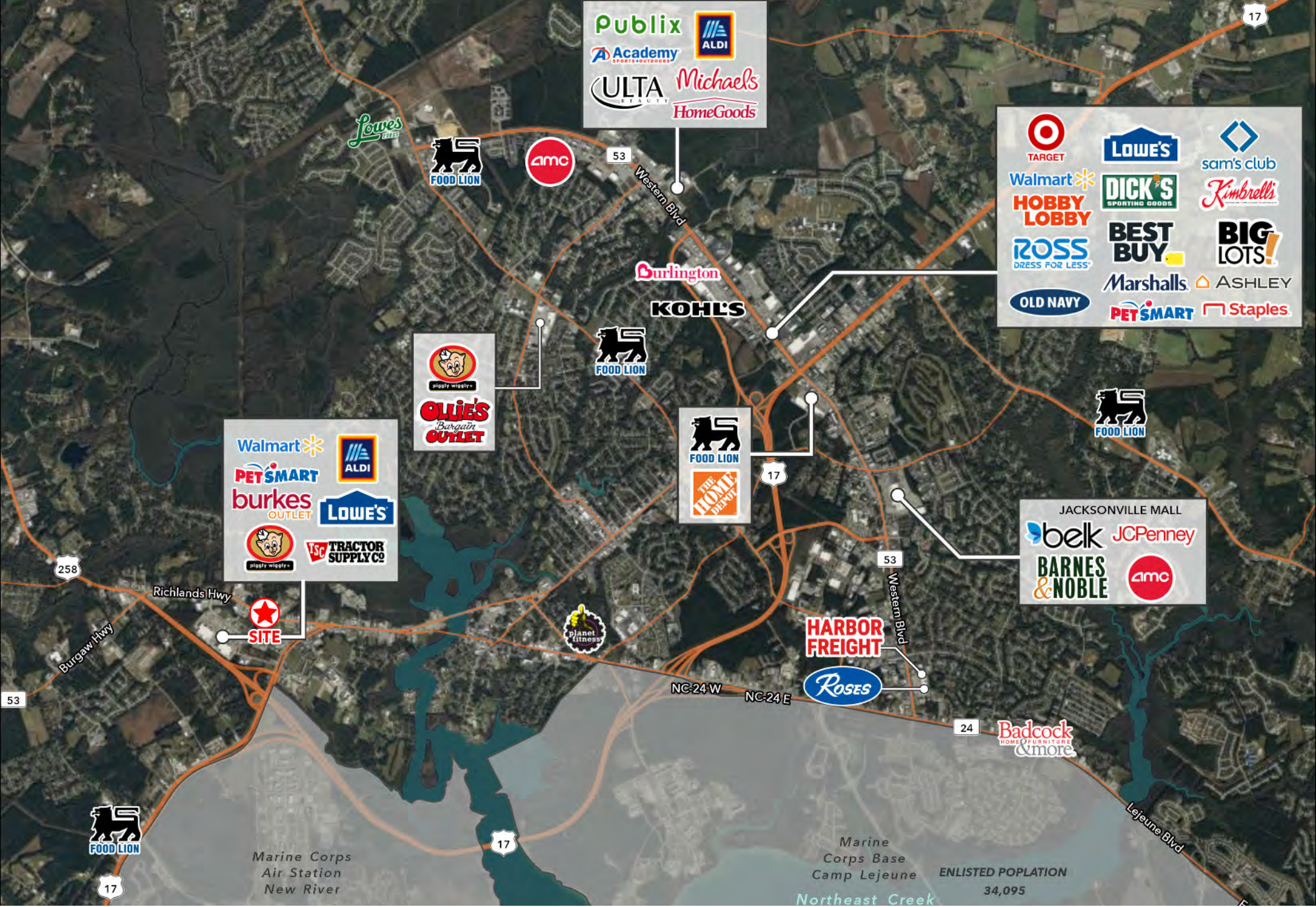
Family Members: 38,769



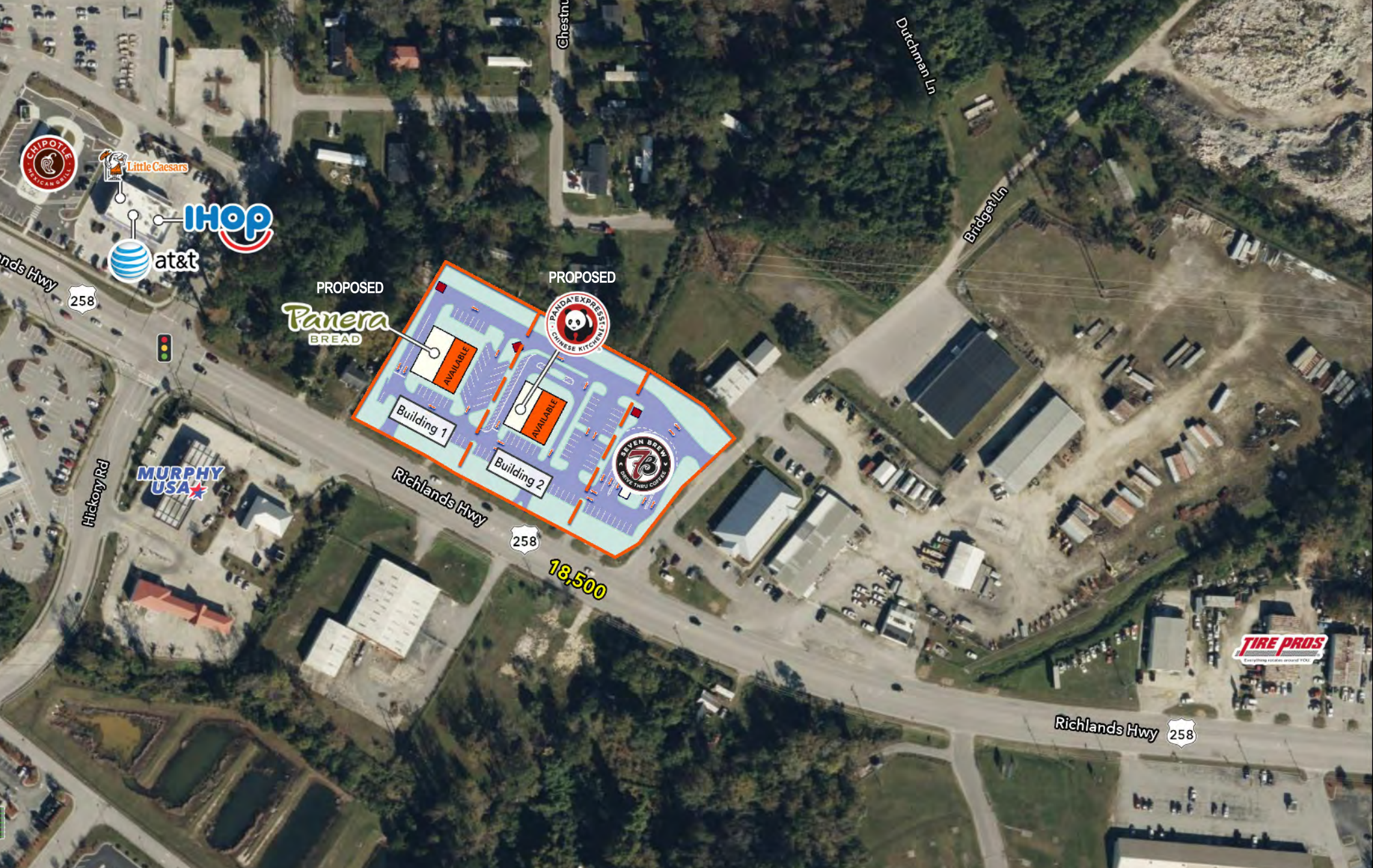
Onslow County Population: 212,616

## DEMOGRAPHICS

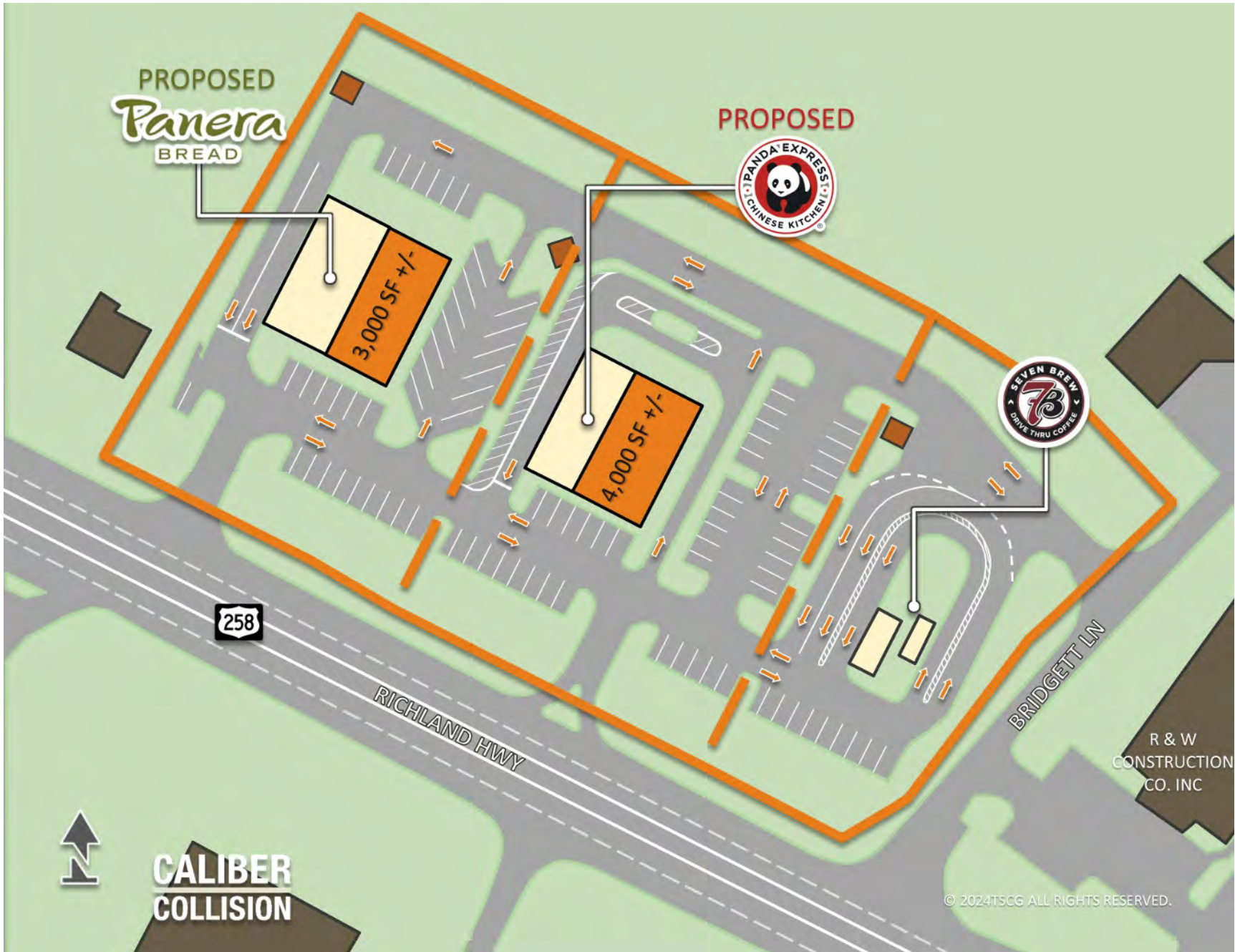
	3 MILES	5 MILES
 2024 Population Density	27,278	65,285
 2024 Daytime Population	21,031	52,825
 2024 Average HH Income	\$84,777	\$78,195
 2024 Total Households	9,516	24,262

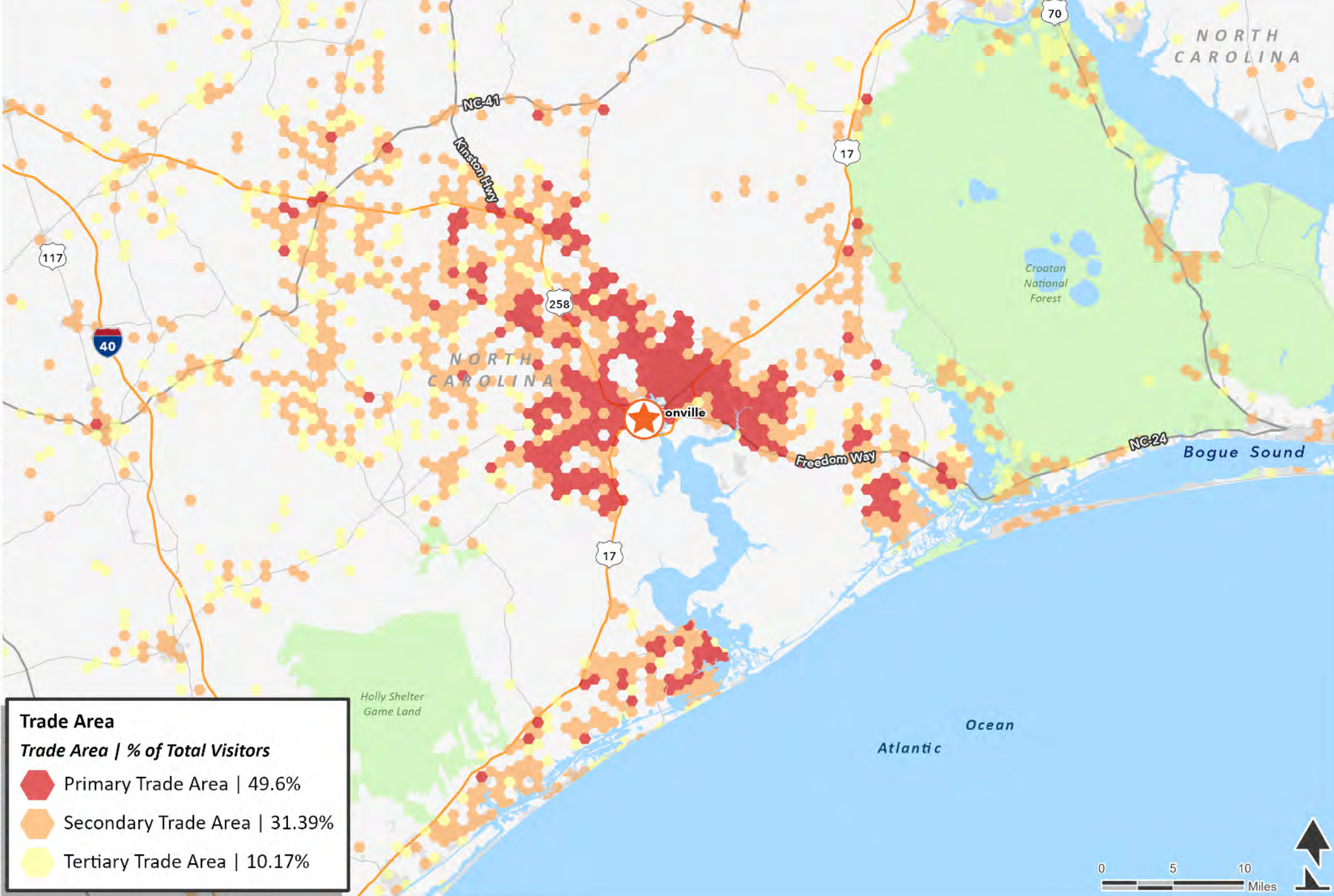






# SITE PLAN





# AREA RETAILERS







**OWNER/DEVELOPER**

**Veritas  
Retail Partners**

**RETAIL LEASING**



## **EXCLUSIVE LEASING AGENTS:**

**TYLER QUINN**

tyler.quinn@tscg.com  
919.380.8041

**JEFF NIMMER, CCIM**

jeff.nimmer@tscg.com  
919.380.8041

**TAYLOR DROUILLARD**

taylor.drouillard@tscg.com  
919.380.8041

4601 SIX FORKS RD  
SUITE 405  
RALEIGH, NC 27609  
919.380.8041  
TSCG.COM