



202 Main Street

Suite 1, Longmont, CO

Jaime Pletcher

jaime@gibbonswhite.com

(303) 586-5936

www.gibbonswhite.com



Property Info & Gallery



View Map

Historic Downtown Longmont Retail / Office Sublease

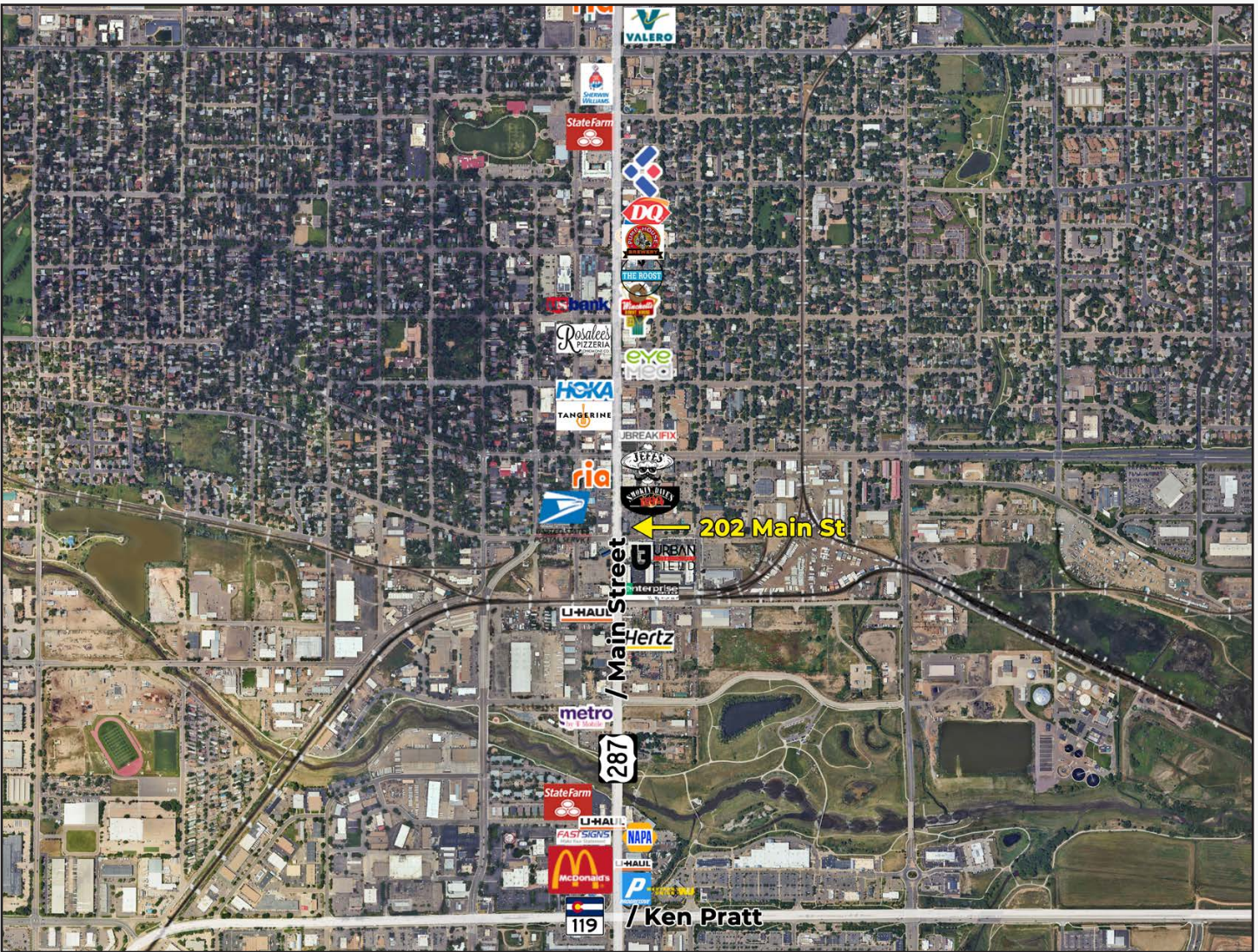
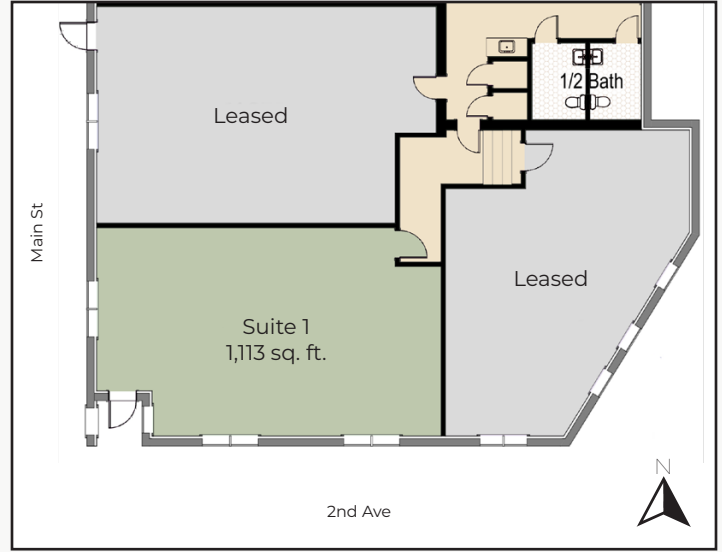
Available Space	1,113 sq. ft.
Lease Rate / Month Gross	\$2,500

- Great Visibility and Opportunity for Signage on 2nd & Main
- Updated Building with Hardwood Floors and Historic Charm
- Hard Corner Unit with Open Floorplan and Natural Light
- Ideal for a Variety of Businesses Seeking High Exposure
- Private Parking Lot Convenient for Employees and Clients
- High-Speed NextLight Fiber Network
- Bustling Downtown with Plenty of Amenities Steps Away
- Sublease Term Through January 31, 2026; Long Term Lease Available

The information included has been obtained from sources believed reliable. While we do not doubt the accuracy of the information, it has not been verified and no guarantee, warranty, or representation is being made.



2305 Canyon Blvd, Suite 200, Boulder, CO 80302 - (303) 442-1040



The information included has been obtained from sources believed reliable. While we do not doubt the accuracy of the information, it has not been verified and no guarantee, warranty, or representation is being made.