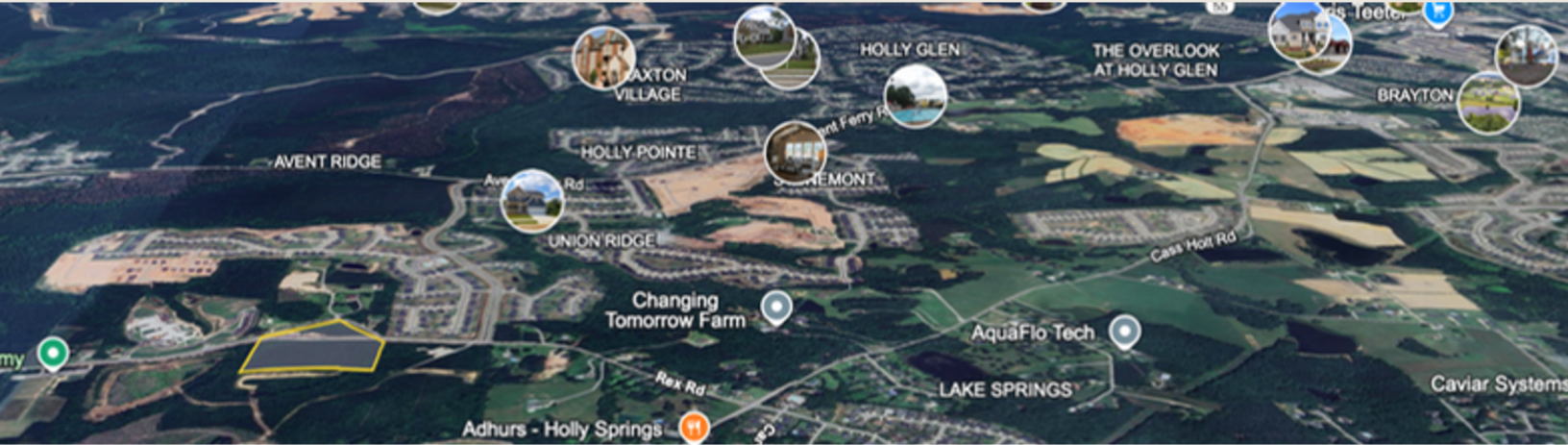


**14.5 Acres | Wake County | Zoned RR | Call for Pricing**

Exceptional 14.5-acre tract located in the heart of Holly Springs' rapidly growing corridor. This vacant land offers endless potential for residential or mixed-use development in one of Wake County's most desirable areas.

Positioned adjacent to a brand-new middle school and surrounded by quality new construction, this property combines location, accessibility, and growth potential. Utilities are nearby, providing straightforward development feasibility.

**Property Features**

- 14.5 acres of vacant land in Wake County
- Zoned RR (Rural Residential)
- Adjacent to a brand-new middle school
- Utilities available nearby
- Wake County Schools district
- Ideal for residential or future development
- Located in a rapidly growing Holly Springs corridor

A rare opportunity to secure a sizable tract in one of the Triangle's most sought-after markets. Perfect for builders, developers, or investors looking to capitalize on Holly Springs' continued growth and demand.

**Prime Development Opportunity**

The property's RR (Rural Residential) zoning allows flexibility for a variety of uses, and its proximity to Wake County Public Schools enhances its long-term value and desirability. With the continued expansion of Holly Springs and nearby Apex, this area represents one of the Triangle's fastest-growing investment corridors.

**Preston Lavinder****REAL ESTATE AGENT**

- > LAND
- > DEVELOPMENT
- > INVESTMENT SALES

 **919.308.8201** **bordenre.com** **lavinderpreston@gmail.com**