

# 1295 S. Eagle Flight Way, Boise, ID

Ram Court Building, in Blackeagle Center



## SPACE DETAILS

SPACE: 12,699 SF

AVAILABLE: Vacant

LAYOUT: Large mostly open office space with perimeter offices and meeting rooms. Provides ample on-site parking. Back patio area, park walking path and easy access from Maple Grove and Overland Roads. Fiber available.

## PROPERTY FEATURES

BLDG TYPE: Office

BLDG SIZE: 35,740 Square Feet

FLOORS: Single Story

PARKING: 5/1,000 SF Leased, included

LEASE TYPE: Full Service, Less Tenant Janitorial

ZONING: City of Boise, L-OD/DA

OWNER: Sundance Investments, L.L.L.P.

## HIGHLIGHTS

- Office building in quiet location near park walking path
- Professional Blackeagle Center, provides abundant service and food amenities in close proximity
- Excellent building signage available
- Generous parking included
- Public bus stop adjacent to business park
- Close freeway access at both Overland (exit 50A/B) and Franklin Road (exit 49), near "Flying Wye" connector

**Call: 208-322-7300**

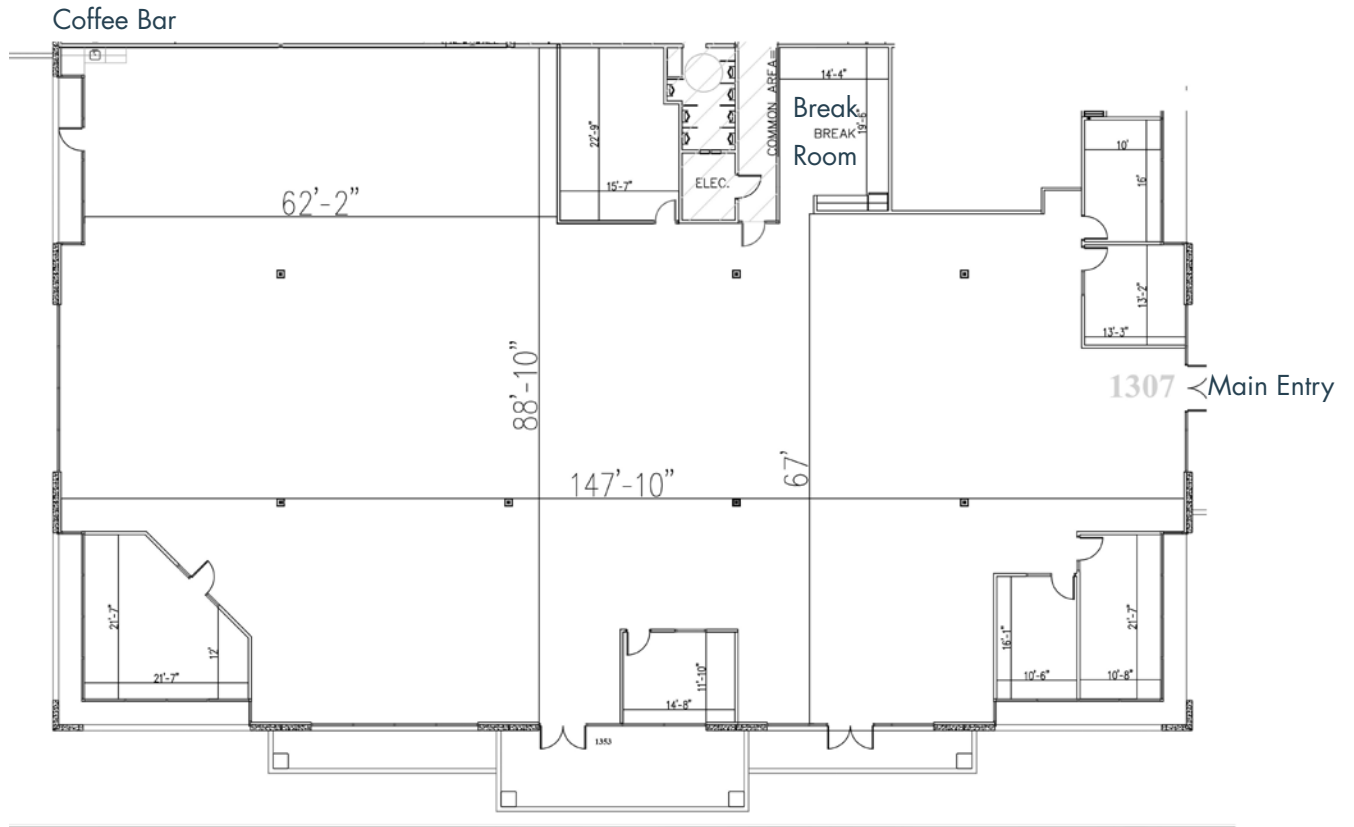
[WWW.SUNDANCECO.COM](http://WWW.SUNDANCECO.COM)



# 1295 S. Eagle Flight Way, Boise, ID

Ram Court Building, in Blackeagle Center

Floor Plan 12,699 SF



## Building Plan



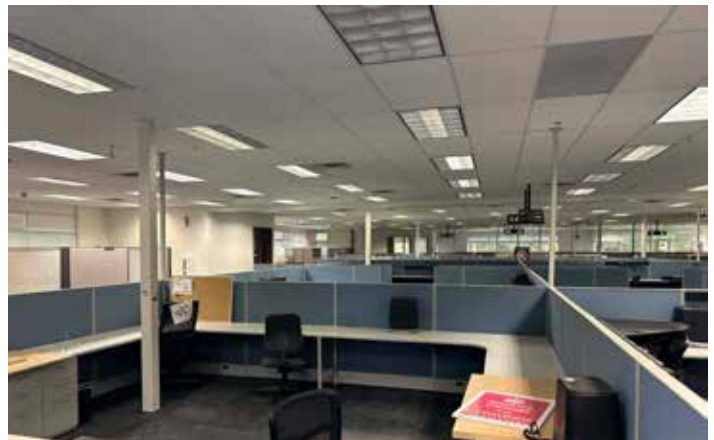
**Call: 208-322-7300**

[WWW.SUNDANCECO.COM](http://WWW.SUNDANCECO.COM)



# 1295 S. Eagle Flight Way, Boise, ID

Ram Court Building, in Blackeagle Center



**Call: 208-322-7300**

[WWW.SUNDANCECO.COM](http://WWW.SUNDANCECO.COM)



# 1295 S. Eagle Flight Way, Boise, ID

Ram Court Building, in Blackeagle Center



**Call: 208-322-7300**

[WWW.SUNDANCECO.COM](http://WWW.SUNDANCECO.COM)

