

# Valley Medical Plaza

Medical Space For Lease

14600 & 14624 Sherman Way, CA

“Class A” Quality with Easy Access  
for Elevated Patient Care



**Jacob Mumper**

Senior Vice President  
Lic. No. 01908862  
Dir +1 818 325 4119  
jacob.mumper@colliers.com

**John Wadsworth**

Senior Vice President  
License No. 01177404  
Dir +1 949 724 5528  
john.wadsworth@colliers.com

**Kevin Fenenbock**

Senior Executive Vice President  
License No. 01165115  
Dir +1 818 325 4118  
kevin.fenenbock@colliers.com



Accelerating success.

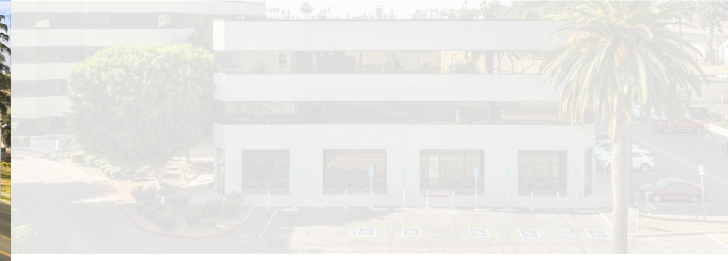
# Property Overview



- Class "A" medical office campus
- Abundant structured and surface parking - FREE
- On-site property management & engineers to tend to maintenance needs
- Diversified mix of primary care & specialty physicians
- On-site lab and pharmacy
- Convenient access to 405 & 101 Freeways

# Hospital Proximity






# Availabilities

## 14600 Sherman Way

Suite	SF	Available
100D	7,508	6/1/2026

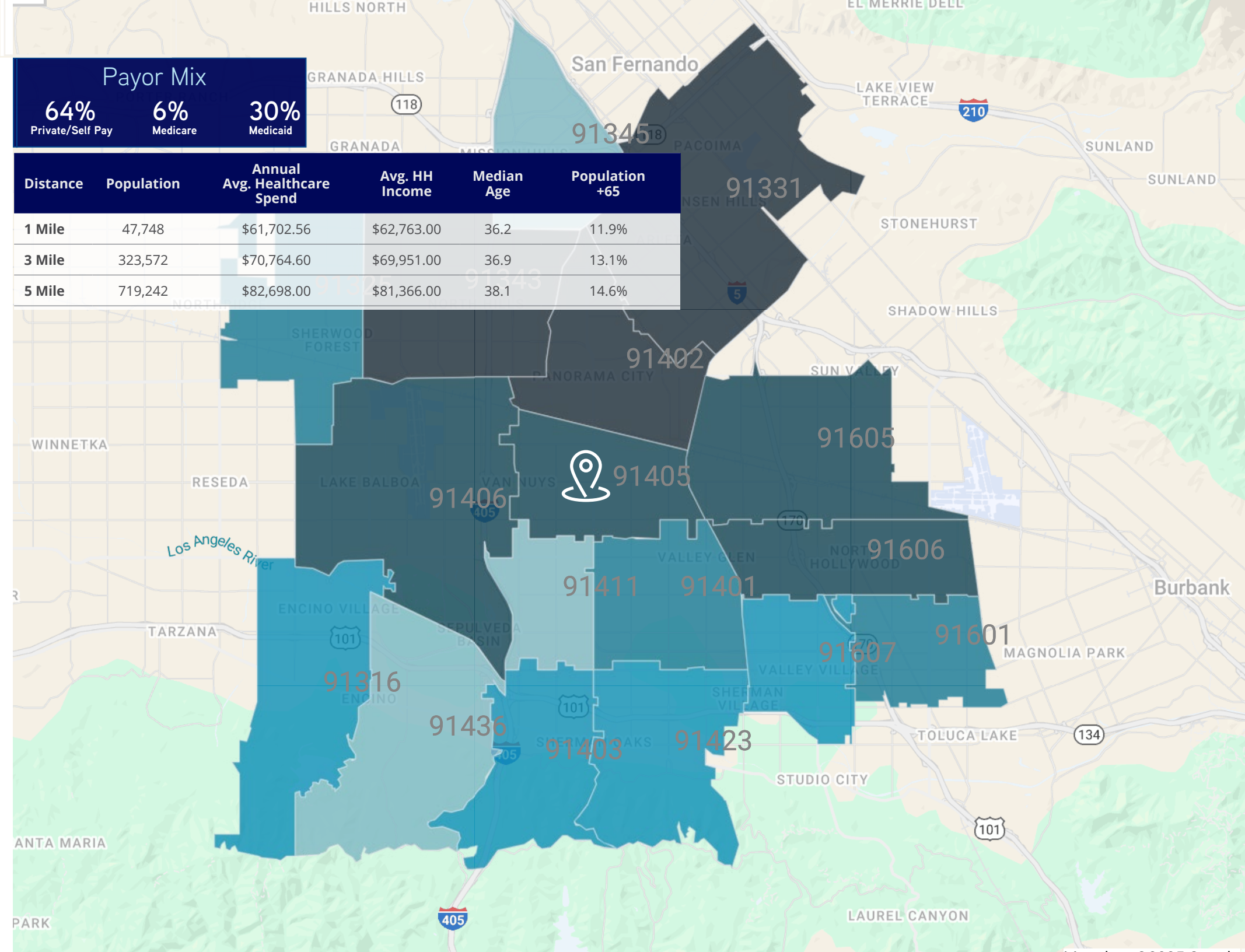
## 14624 Sherman Way

Suite	SF	Virtual Tour	Available
203	1,372	Coming Soon	Immediately
*404	1,200	Coming Soon	6/1/2026
*403	1,613	Coming Soon	6/1/2026
408	2,226	Coming Soon	6/1/2026
**502	1,457	Coming Soon	6/1/2026
**500	2,143		Immediately
508	3,199	Coming Soon	6/1/2026

\*Suites 403 & 404 are contiguous totaling 2,813 SF  
 \*\*Suites 500 & 502 are contiguous totaling 3,618 SF



# Amenities Map





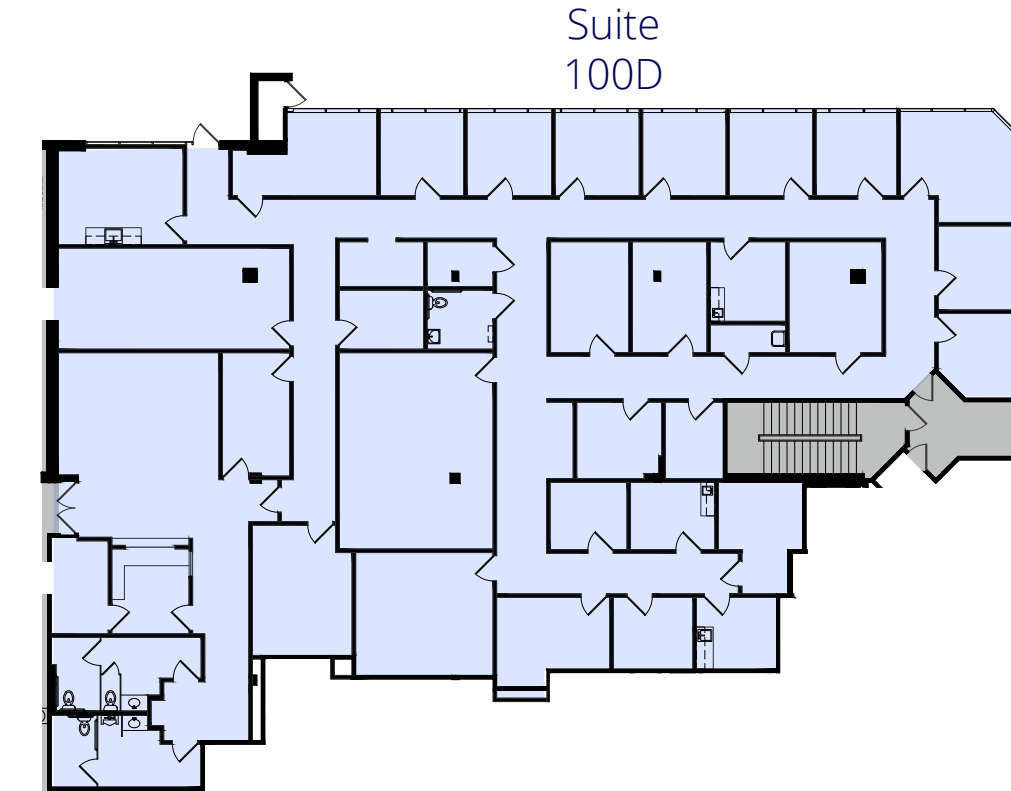
## Patient Demand Forecast, Pasadena

The Outpatient Market Scenario Planner (MSP), as developed by the Advisory Board, provides current and projected patient utilization estimates for specific specialties in key markets across the US. The MSP tool supports planners, providers and hospital executives to make intelligent business development and strategic decisions to locate or expand programs in targeted markets. The below data is representative of the Pasadena zip codes within a three mile radius of Cotton Medical Center – which include For more information the Advisory Board, please visit [www.advisory.com](http://www.advisory.com).

SERVICE LINES	TODAY'S VOLUME	2028		2033	
		5-Year VOLUME ↑	%	10-Year VOLUME ↑	%
Endocrinology	4,367	5,158	18.1%	5,626	28.8%
Psychiatry	290,962	322,269	10.8%	319,173	9.7%
Spine	3,919	4,316	10.1%	4,483	14.4%
Vascular	31,747	34,605	9.0%	37,281	17.4%
Cardiology	188,403	203,188	7.8%	213,507	13.3%
Ophthalmology	169,314	182,591	7.8%	198,172	17.0%
Physical Therapy / Rehabilitation	536,120	577,071	7.6%	646,090	20.5%
Pain Management	22,200	23,584	6.2%	24,711	11.3%
ENT	66,793	70,900	6.1%	74,419	11.4%
Orthopedics	59,971	63,540	6.0%	68,446	14.1%
Lab	887,948	935,517	5.4%	964,467	8.6%
Nephrology	10,329	10,840	4.9%	11,192	8.4%
Podiatry	30,998	32,234	4.0%	34,231	10.4%
Neurology	35,002	35,687	2.0%	36,381	3.9%
Oncology	29,155	29,704	1.9%	30,528	4.7%
Trauma	14,989	15,271	1.9%	15,572	3.9%
Evaluation and Management	2,085,887	2,120,276	1.6%	2,128,827	2.1%
Radiology	597,700	602,765	0.8%	607,454	1.6%

## Floor Plans

### South Tower - 14600 Sherman Way



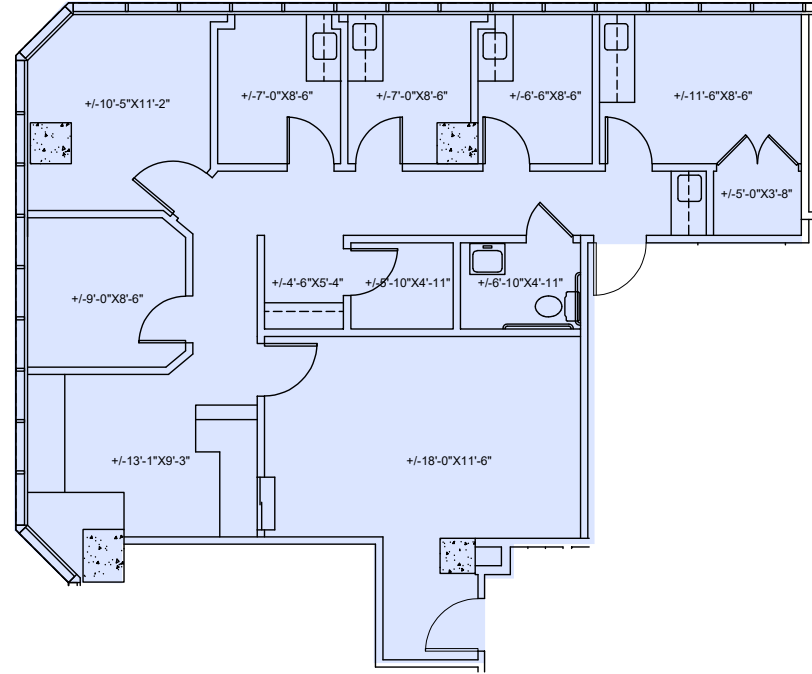
Note: Ground Floor Availability Off Lobby w. Dedicated Entrance

Suite #	Size	Availability
100D	7,508 SF	6/1/2026

# Floor Plans

South Tower - 14624 Sherman Way

Suite 203

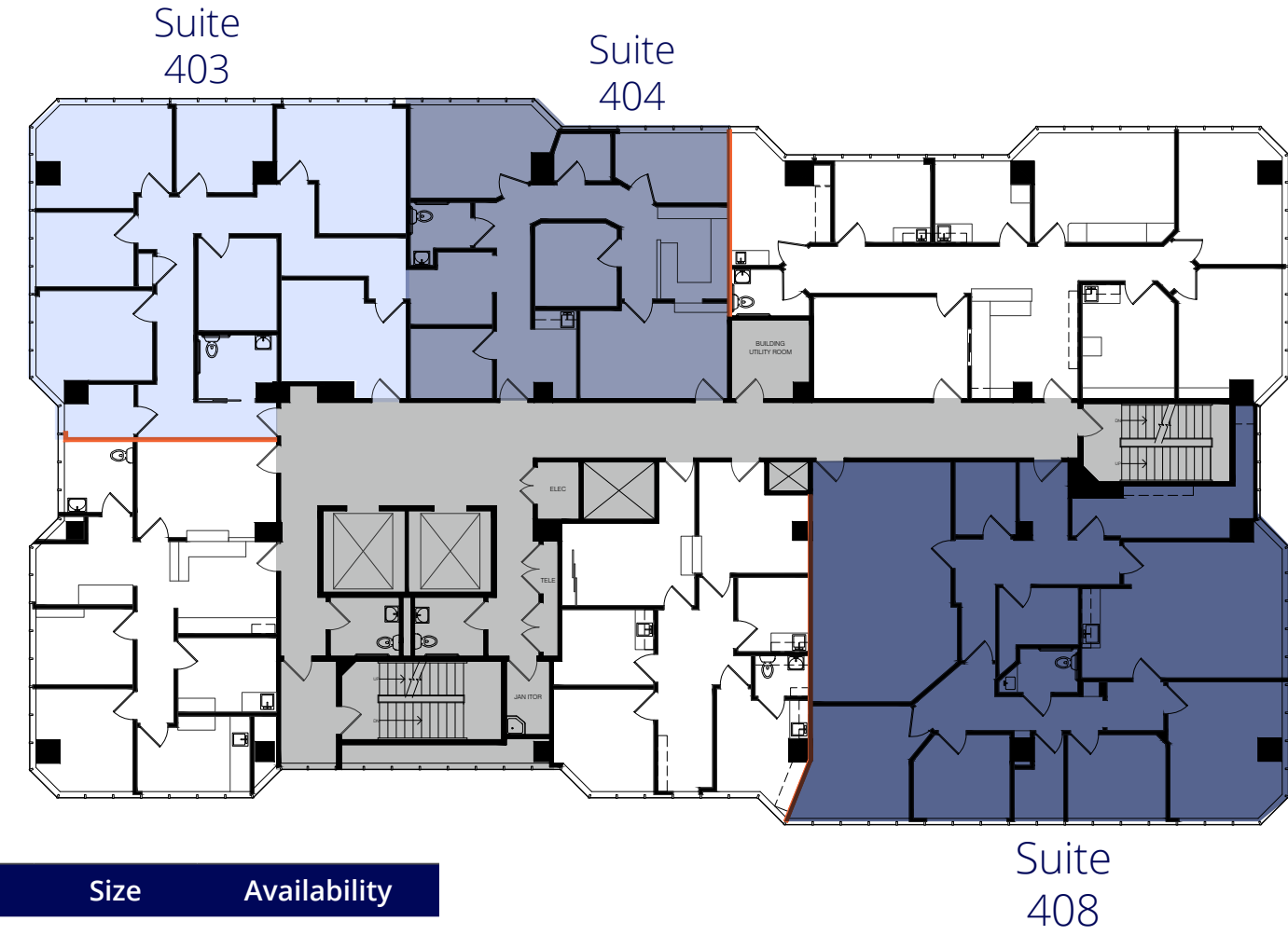


Suite #	Size	Availability	Virtual Tour
---------	------	--------------	--------------

203	1,372 SF	Immediately	
-----	----------	-------------	--

# Floor Plans

South Tower - 14624 Sherman Way



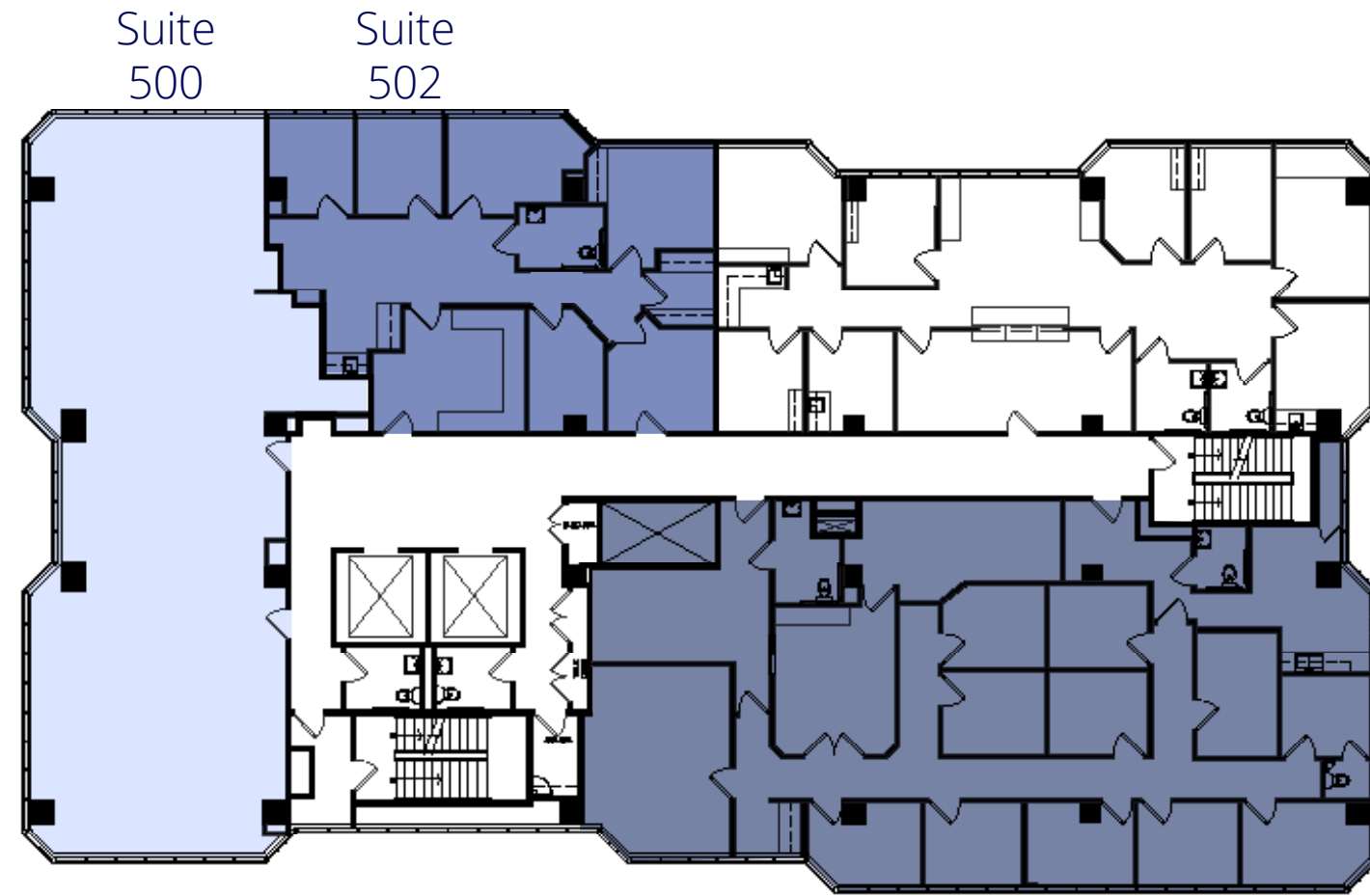
Suite #	Size	Availability
---------	------	--------------

*404	1,200 SF	6/1/2026
*403	1,613 SF	6/1/2026
408	2,226 SF	6/1/2026

\*Suites 403 & 404 are contiguous totaling 2,813 SF

# Floor Plans

South Tower - 14624 Sherman Way



Suite #	Size	Availability	Virtual Tour
---------	------	--------------	--------------

Suite 508

**502	1,475 SF	6/1/2026
**500	2,143 SF	Immediately
508	3,199 SF	6/1/2026



\*\*Suites 500 & 502 are contiguous totaling 3,618 SF



**Jacob Mumper**  
 Senior Vice President  
 Lic. No. 01908862  
 Dir +1 818 325 4119  
 jacob.mumper@colliers.com

Kevin Fenenbock  
 Senior Executive Vice President  
 License No. 01165115  
 Dir +1 818 325 4118  
 kevin.fenenbock@colliers.com

John Wadsworth  
 Senior Vice President  
 License No. 01177404  
 Dir +1 949 724 5528  
 john.wadsworth@colliers.com

Colliers  
 505 N Brand Blvd Suite 1120  
 Glendale, CA 91203  
 P: +1 949 724 5500  
 F: +1 949 724 5600



Accelerating success.