

# 28 West 27th Street, New York, NY 10001 (Unit#506+#508)

Between Fifth and Sixth Avenue | NoMad



**Approximate Size:** Unit #506 + #508 (2,350 SF)

**Asking Rent:** \$39 PSF

**Site status:** Vacant and Broom Cleaned

**Possession:** IMD

**Term:** 1-10 year, plus option

**Frontage:** 59 feet

**Ceiling Height:** 11 feet

**Neighbors:**

Madison Square Park, Korean Town, Penn Station, Virgin Hotel, Empire State Building, Herald Square, CVS, Fashion Institute

**Comments:**

Private Office For Rent; High Ceiling; Quality Hardwood Floor Large Windows With Great Light

\*Location Close to AI

\*24/

\*Imd Occupancy

**Remarks:**

Ideal for Tech, Media, PR, Advertising

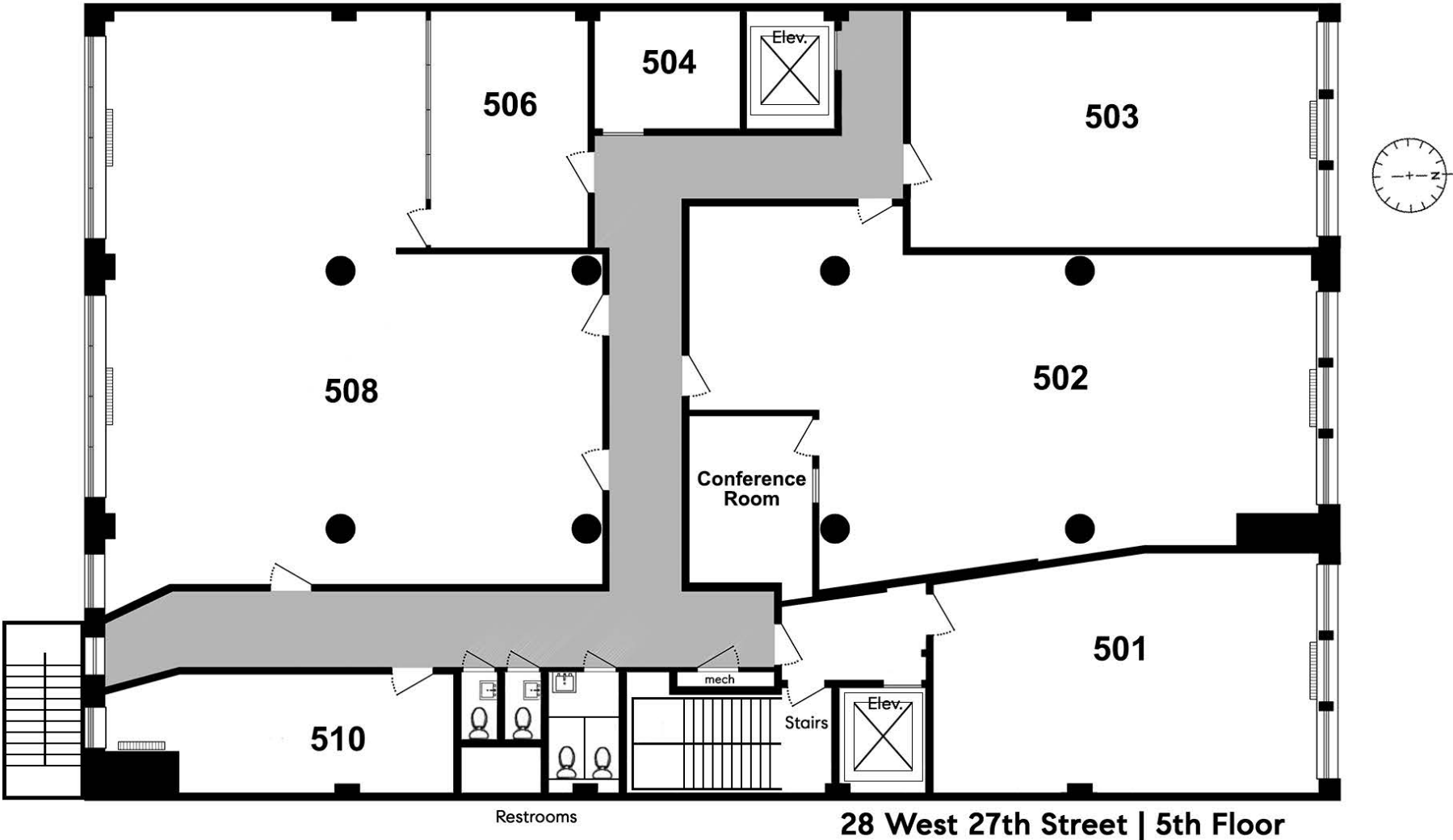
All units can be combined or divided

Call for inquiry

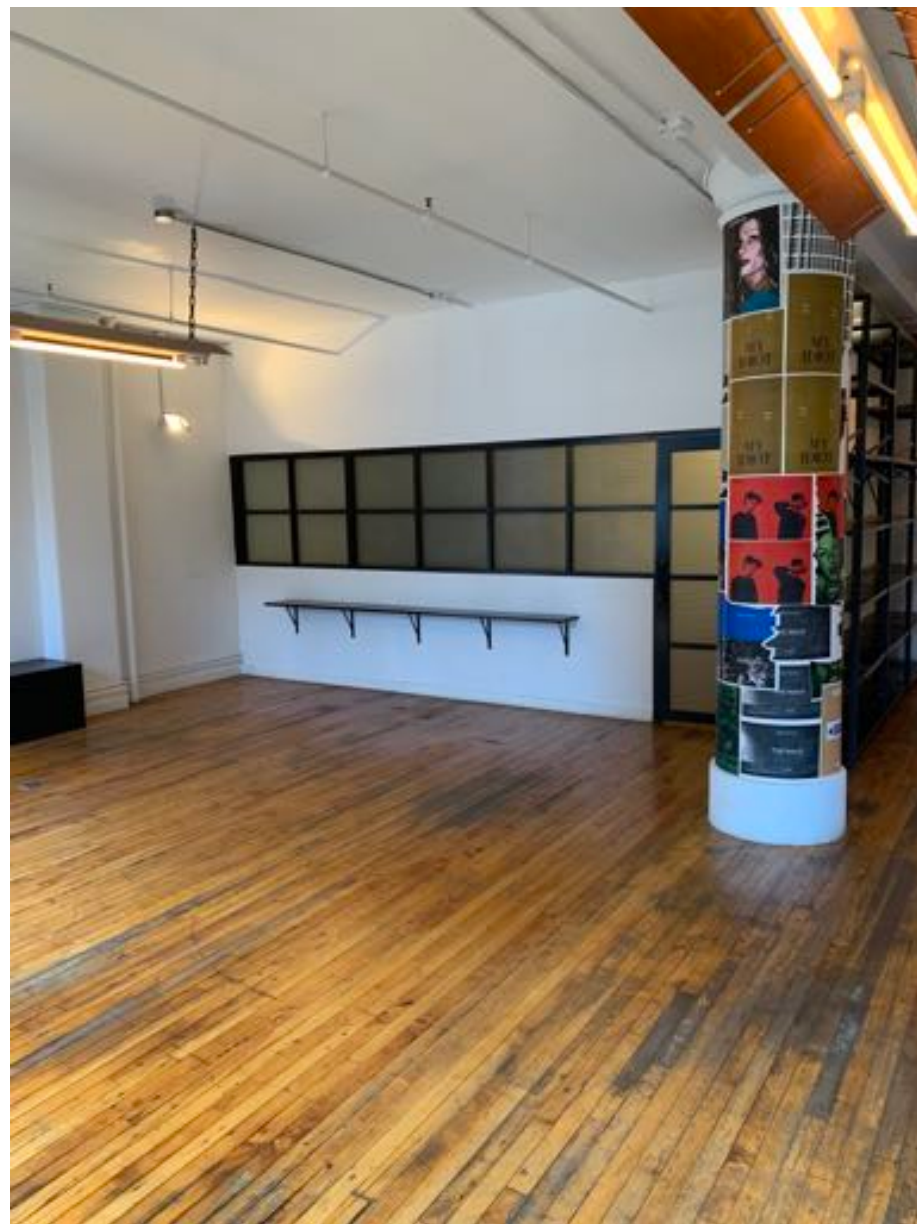
**Transportation:**

Subway, MTA, Riders paradise

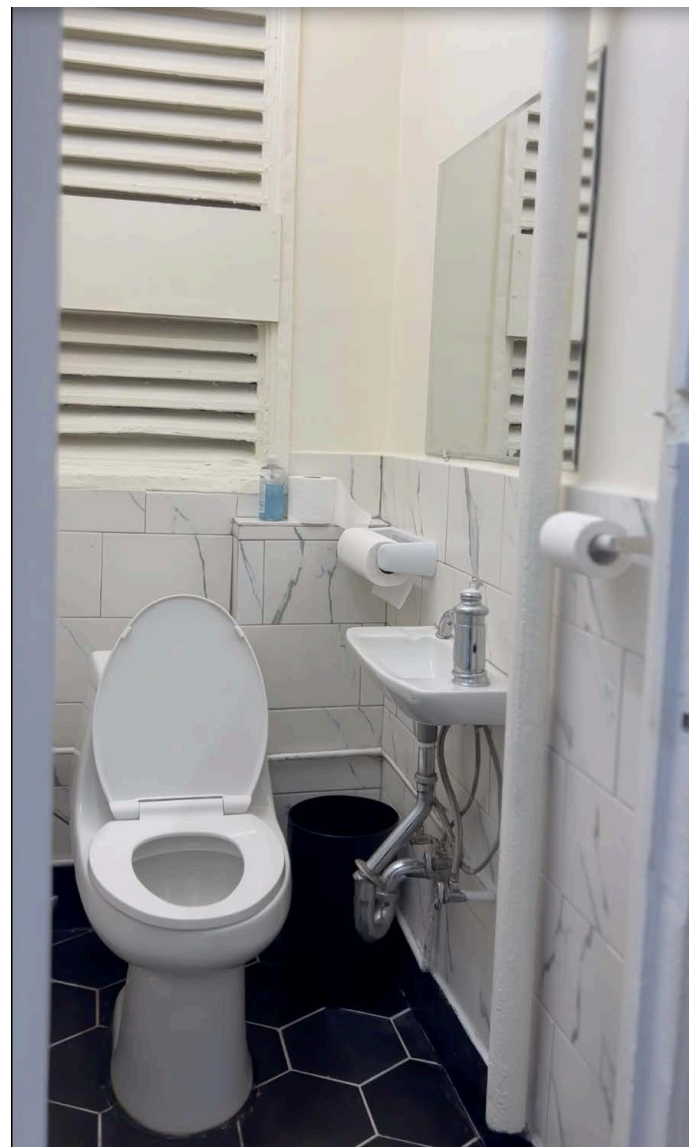
# Floor Plan







All information supplied is from sources deemed reliable and is furnished subject to errors, omissions, modifications, removal of the listing from sale or lease, and to any listing conditions, including the rates and manner of payment of commissions for particular offerings imposed by Compass. Any square footage or dimensions set forth are approximate.







**Building image**

**NoMad**  
(Between Lexington and 6th Avenues,  
North of 25th Street and South of 30th Street)

