

3010 Taylor Springs Dr.

LOUISVILLE, KY

±7,800 SF AVAILABLE | MULTI-TENANT OFFICE | MOVE-IN READY

Positioned within Louisville's thriving Hikes Point corridor, 3010 Taylor Springs Drive offers an exceptional opportunity for professional office users seeking turn-key space in a high-demand pocket of the city. Surrounded by dense residential neighborhoods, established commercial services, and anchored by major national retailers along Taylorsville Road, this flexible two-story office building provides unmatched accessibility and convenience.

The property features multiple suites suitable for medical, professional, or general office use, with functional layouts that include private offices, conference rooms, open work areas, break rooms, and restrooms on each floor. Ample parking (80 surface spaces) and immediate proximity to retail amenities – including Kroger, HomeGoods, Starbucks, Chick-fil-A, and more – make this an ideal location for employee- and client-focused businesses.



GULFSTREAM
COMMERCIAL SERVICES, LLC



FAHR JUNEJA

PARTNER & PRINCIPAL BROKER

Louisville, KY
(502) 744-1465
fahr@gulfstreamdev.com



MOE MAYBODY

AGENT & PROPERTY MANAGER

Louisville, KY
(502) 640-7705
moe@gulfstreamdev.com



COLE STURGEON

AGENT

Louisville, KY
(270) 929-2299
cole@gulfstreamdev.com

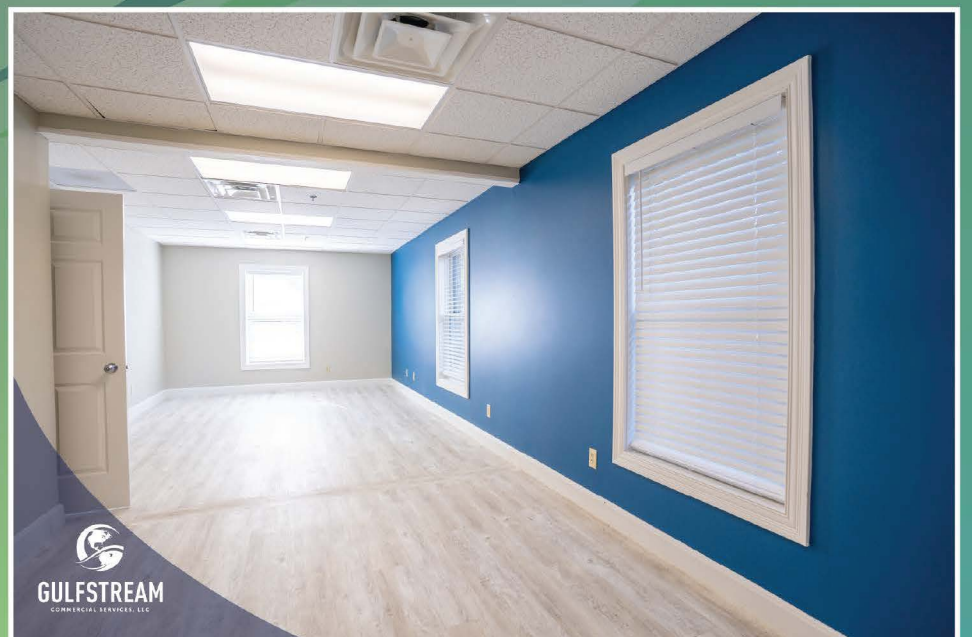


First Floor Space

±3,600 SF



WATCH THE 1ST FLOOR WALKTHROUGH
VIDEO NOW



Second Floor Space

±4,200 SF



WATCH THE 2ND FLOOR WALKTHROUGH
VIDEO NOW

