

**FOR LEASE**



ALEXANDER & BALDWIN

**CBRE**



# Kakaako Commerce Center

875 WAIMANU STREET, HONOLULU, HI 96813



# Kakaako Commerce Center

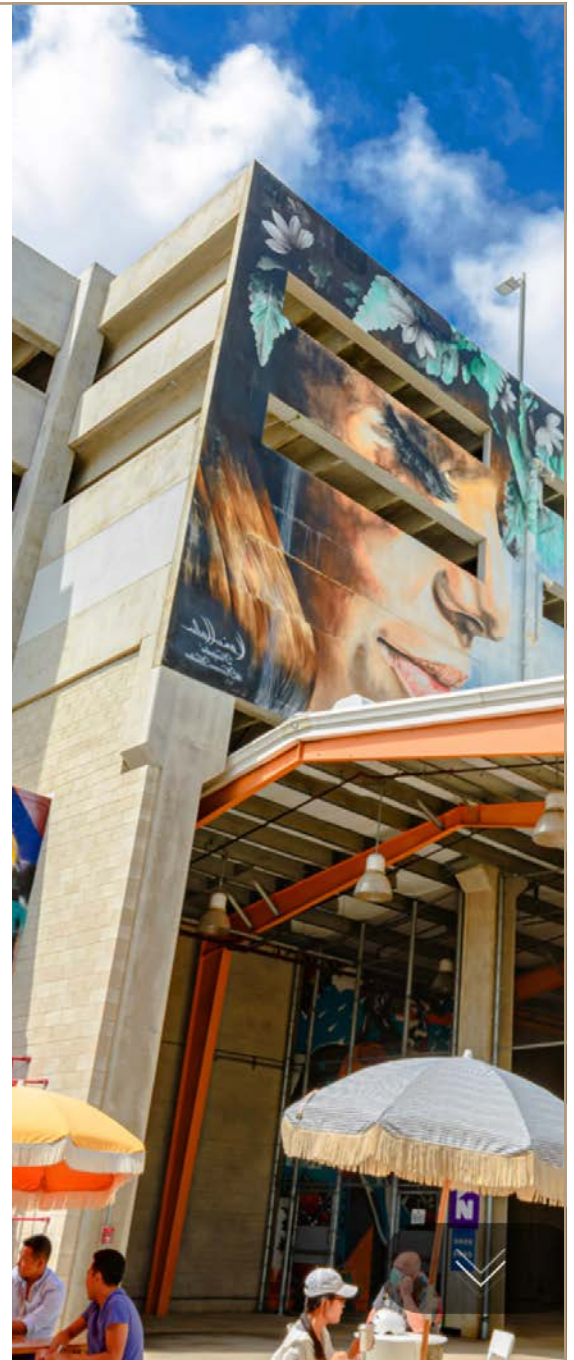
**Discover the Kakaako Commerce Center, a six-level warehouse/office complex located in one of Honolulu's most exciting areas to live, work, play!**

Strategically located in the heart of urban Honolulu, the Kakaako Commerce Center is within a half-mile radius of downtown Honolulu, Ward Center, Blaisdell Arena, and Ala Moana. Just 0.5 miles from the H-1, the location ensures a hassle-free commute, complemented by convenient on-site parking options available for monthly purchase.

Designed for optimal functionality, the Kakaako Commerce Center boasts amenities such as a common area loading dock, elevator access, and 24/7 security. In addition to practicality, the location will encourage a healthy work-life balance, allowing you to thrive professionally and personally.

Immerse yourself in the vibrant Kakaako community, where diverse dining options, ranging from trendy cafes to upscale restaurants, cater to every palate. Need a nature break? Kakaako Waterfront Park is just moments away.

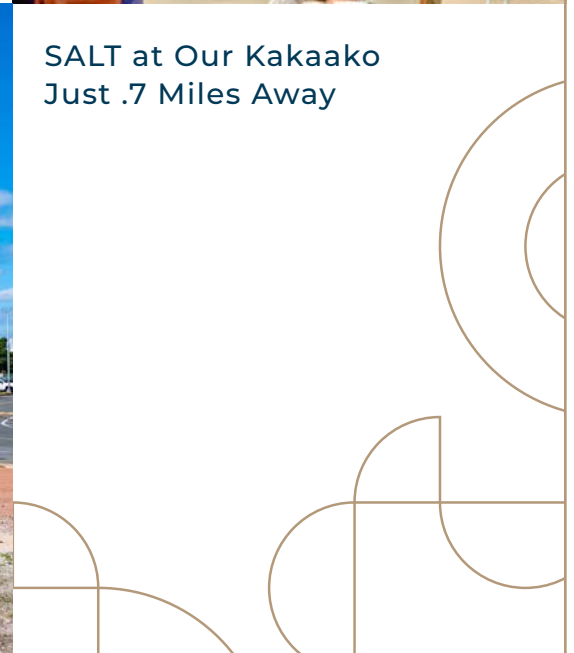
**Welcome to a workplace that goes beyond the ordinary, defining a new standard for work-life integration.**



**Kakaako Waterfront Park  
Just 1 Mile Away**



**SALT at Our Kakaako  
Just .7 Miles Away**





## KEY FEATURES



Highly desired central location in the heart of vibrant Kakaako



Speed ramp access all floors, accommodating large vehicles



Common area loading dock with high and low docks



Landmark building with elevator access, including freight elevator service



24/7 access, on-site security and Common area restrooms



Electricity included in rent



Ample on-site parking available



*Elevate your professional life at Kakaako Commerce Center —*





# CONTACT



**JIE XIE**  
Senior Associate  
Lic. RS-73904  
808-541-5154  
Jie.Xie@cbre.com

© 2024 CBRE, Inc. All rights reserved. This information has been obtained from sources believed reliable but has not been verified for accuracy or completeness. CBRE, Inc. makes no guarantee, representation or warranty and accepts no responsibility or liability as to the accuracy, completeness, or reliability of the information contained herein. You should conduct a careful, independent investigation of the property and verify all information. Any reliance on this information is solely at your own risk. CBRE and the CBRE logo are service marks of CBRE, Inc. All other marks displayed on this document are the property of their respective owners, and the use of such marks does not imply any affiliation with or endorsement of CBRE. Photos herein are the property of their respective owners. Use of these images without the express written consent of the owner is prohibited.

JMX:RMP\_ID54\_KKC-875Waimanu\_12.11.24



# FOR LEASE

## Kakaako Commerce Center

875 WAIMANU STREET, HONOLULU, HI 96813

FLOOR 3

### SUITE INFORMATION

- Street Front Access
- Air Conditioned
- Parking Available \$90/Month Per Stall
- Telecom Available
- Base Rent: \$1.20/SF per Month
- Cam: \$0.94/SF per Month  
(Includes Water/Sewer/Electric)

### INDUSTRIAL SPACE

Suite #	Size	Term	Available
314	3,013 SF	Negotiable	Immediately
320	1,663 SF	Negotiable	Immediately
322	2,238 SF	Negotiable	Immediately

### CONTACT

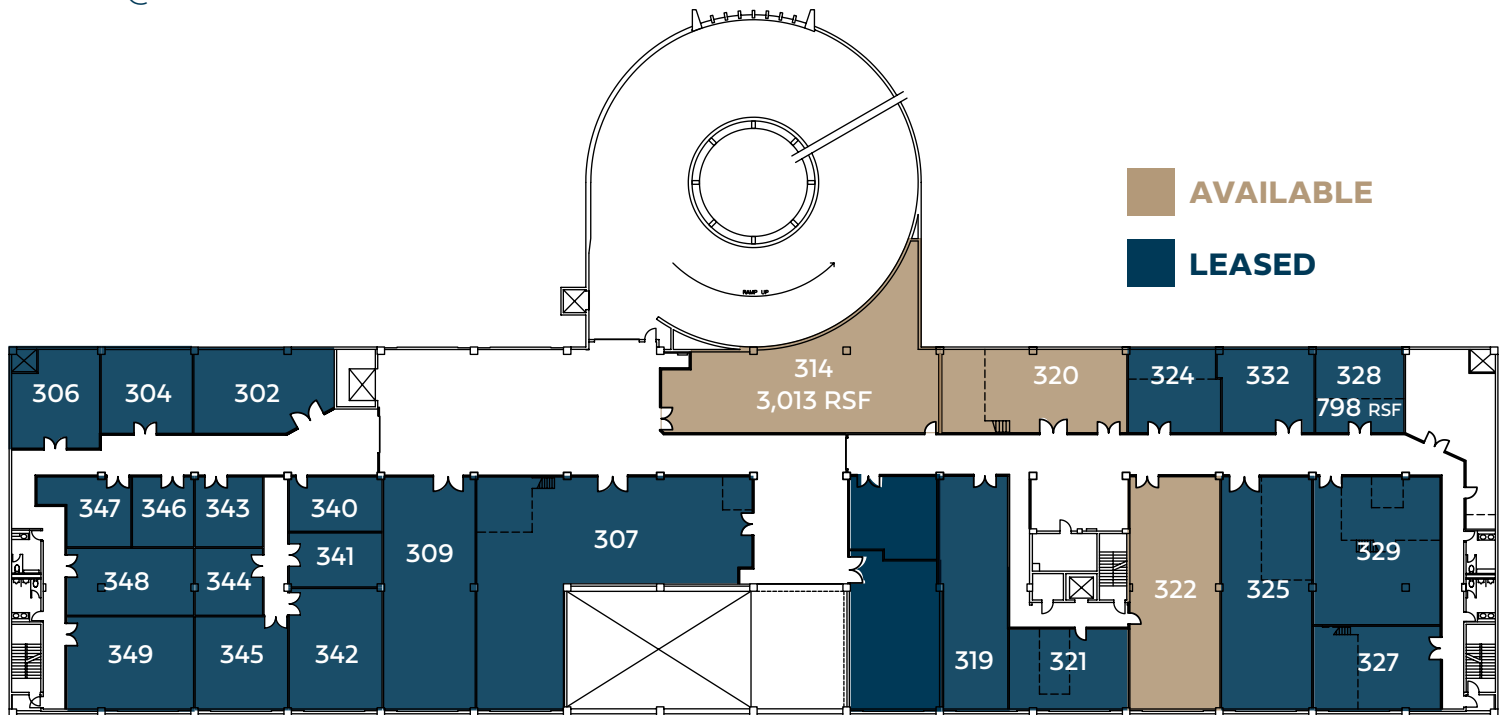
#### JIE XIE

Senior Associate

Lic. RS-73904

**808-541-5154**

Jie.Xie@cbre.com



ALEXANDER & BALDWIN



cbre.com/hawaii

# FOR LEASE

## Kakaako Commerce Center

875 WAIMANU STREET, HONOLULU, HI 96813

FLOOR 4

ENTIRE 4TH FLOOR | RSF 36,108 | FLEX-USE INDUSTRIAL SPACE



12.5 ft  
Clear Height



Column Spacing  
32 ft/23 ft



Fully  
Sprinklered



Heavy  
Weight Load



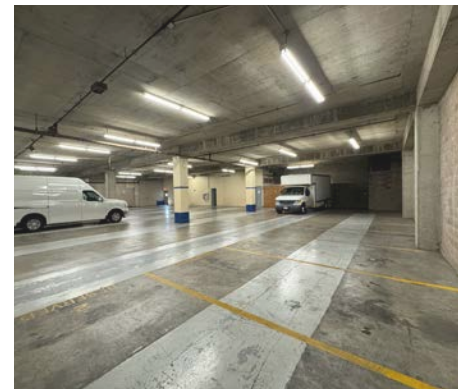
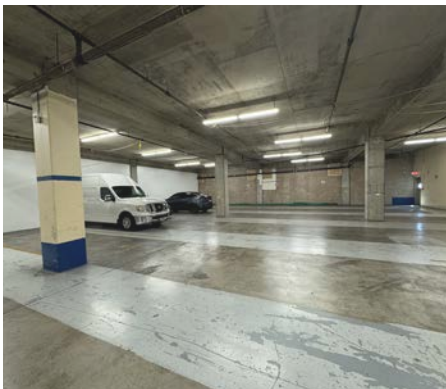
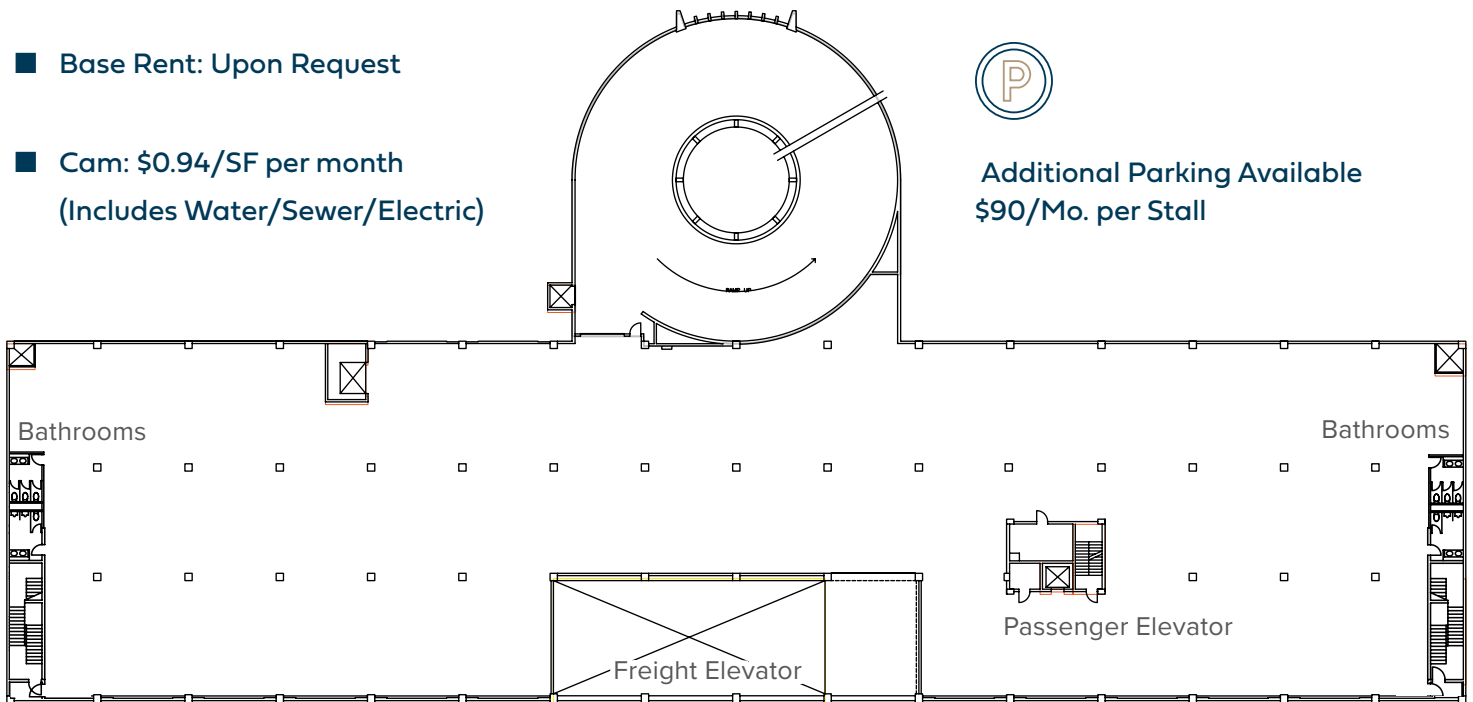
Secure  
Building

■ Base Rent: Upon Request

■ Cam: \$0.94/SF per month  
(Includes Water/Sewer/Electric)



Additional Parking Available  
\$90/Mo. per Stall



ALEXANDER & BALDWIN

CBRE

[cbre.com/hawaii](http://cbre.com/hawaii)

# FOR LEASE

## Kakaako Commerce Center

875 WAIMANU STREET, HONOLULU, HI 96813

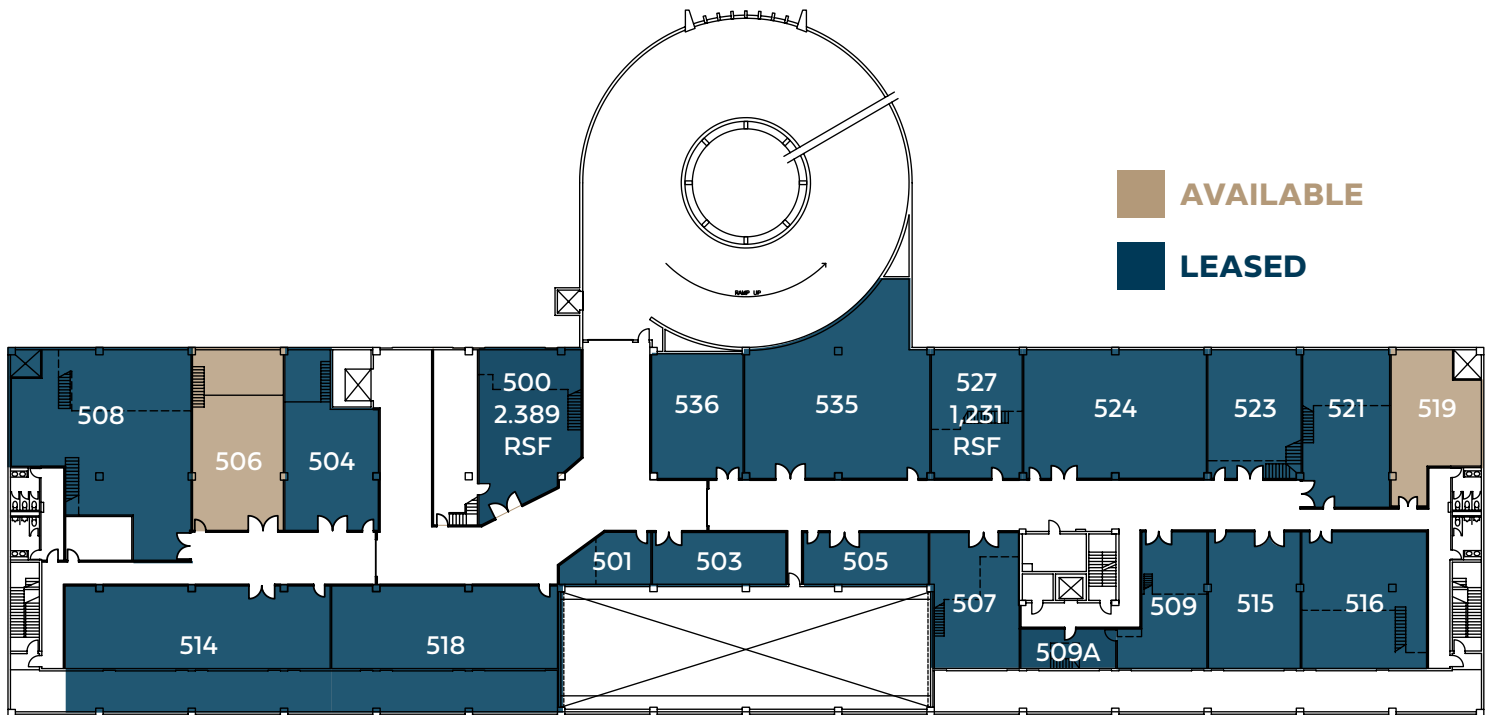
FLOOR 5

### SUITE INFORMATION

- Street Front Access
- Air Conditioned
- Parking Available \$90/Month Per Stall
- Telecom Available
- Base Rent: \$1.20/SF per Month
- Cam: \$0.94/SF per Month  
(Includes Water/Sewer/Electric)

### WAREHOUSE SPACE

Suite #	Size	Term	Available
506	1,719 RSF	Negotiable	Immediately
519	1,178 RSF	Negotiable	Immediately



### CONTACT

#### JIE XIE

Senior Associate

Lic. RS-73904

**808-541-5154**

Jie.Xie@cbre.com



ALEXANDER & BALDWIN



[cbre.com/hawaii](http://cbre.com/hawaii)

# FOR LEASE

## Kakaako Commerce Center

875 WAIMANU STREET, HONOLULU, HI 96813

**FLOOR 6**

1,231-19,866 RSF of Office Space

### Suite Information

- Air Conditioning
- Parking stalls available at \$90/month per stall
- Available Telecom
- Water and electricity included in rent
- Large office block available

Suite No.	Size (RSF)	Base Rent	CAM	Parking	Availability
607	1,087	TBD	TBD	2+	TBD
609	1,009	TBD	TBD	2+	TBD
612	924	TBD	TBD	1+	TBD
613	1,264	TBD	TBD	2+	TBD
614	1,501	TBD	TBD	3+	TBD
614A	702	TBD	TBD	1+	TBD
620	1,087	TBD	TBD	2+	TBD
621	1,087	TBD	TBD	2+	TBD
623	1,107	TBD	TBD	2+	TBD
624	466	TBD	TBD	1+	TBD
625	909	TBD	TBD	1+	TBD
626	1,155	TBD	TBD	1+	TBD
632	1,179	TBD	TBD	2+	TBD
634	1,203	TBD	TBD	2+	TBD
640	1,240	TBD	TBD	2+	TBD

Suite	Size (RSF)	Base Rent	CAM	Parking	Availability
600/602	2,769	TBD	TBD	5+	TBD
601	1,757	TBD	TBD	3+	TBD
603	501	TBD	TBD	1+	TBD
604	608	TBD	TBD	1+	TBD
605	896	TBD	TBD	1+	TBD
606	896	TBD	TBD	1+	TBD

### Site Plan

