

**6280 202 STREET**  
LANGLEY, BC

**LEE &  
ASSOCIATES**  
COMMERCIAL REAL ESTATE SERVICES

WATCH VIDEO



## INDUSTRIAL BUILDING **FOR SALE**

15,927 SF Concrete Building on 0.89 Acre Lot  
18-Foot Warehouse Ceilings w/ Grade Loading  
+/- 5,000 SF Secured Yard Compound

**Sebastian Espinosa** CCIM, SIOR  
Personal Real Estate Corporation  
Senior Vice President | Industrial  
D 604.630.3396 C 604.783.8139  
sebastian.espinosa@lee-associates.com

**Grant Basran**  
Associate Vice President | Industrial  
D 604.630.3376 C 604.518.2188  
grant.basran@lee-associates.com



6280 202 STREET

LANGLEY, BC

The Opportunity

This property presents an exceptional opportunity to acquire a 16,581 square foot free-standing industrial building in the Willowbrook business area. The site boasts low site coverage allowing for additional storage within the secured yard compound. This property presents a unique opportunity for an owner/user or investor to acquire a centrally located property in close proximity to the future Skytrain extension.

Property Features

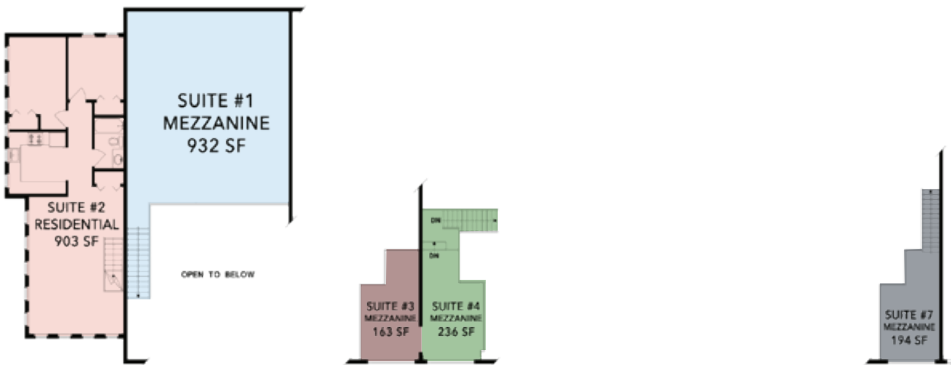
- » 18' ceiling height (warehouse)
- » Low site coverage (39%)
- » Quality concrete block construction
- » Secure yard compound (+/- 5,000 SF)
- » 3-phase power
- » Washrooms
- » Forced-air heating (warehouse)
- » Eight (8) grade loading doors (10' X 12')
- » Potential to convert two (2) additional grade loading doors



Salient Details

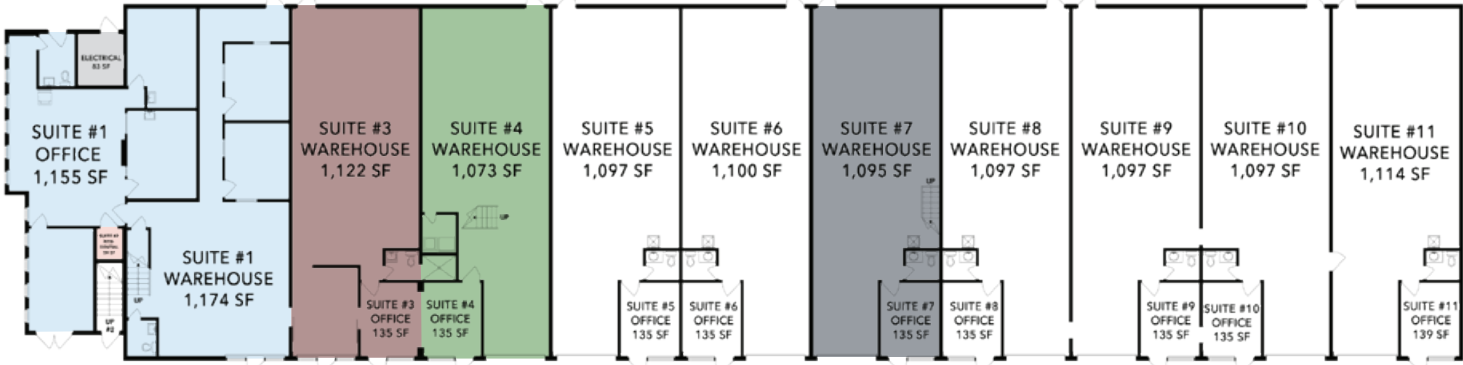
Legal Description	LOT 11 DISTRICT LOT 311 GROUP 2 NEW WESTMINSTER DISTRICT PLAN 79092
PID	011-988-754
Site Size	38,848 SF (0.89 Acres)
Gross Floor Area	15,927 SF (14,692 SF can be potentially vacant upon Completion of Sale)
Zoning	M-2 (General Industrial Zone)
Property Taxes	\$65,687.26 (2024)
Asking Price	Contact Brokers





DOWNLOAD PLANS

UPPER FLOOR



LOWER FLOOR

Unit Breakdown and Tenancy Details\*\*

SUITE	OFFICE	WAREHOUSE	MEZZANINE	TOTAL	TENANCY
1	1,155 SF	1,174 SF	932 SF	3,261 SF	Month-to-Month
2	962 SF (Residential)	-	-	962 SF	Month-to-Month
3	135 SF	1,122 SF	163 SF	1,420 SF	Month-to-Month
4	135 SF	1,073 SF	236 SF	1,444 SF	Month-to-Month
5	135 SF	1,097 SF	-	1,232 SF	Month-to-Month
6	135 SF	1,100 SF	-	1,235 SF	Leased until Sept 2027
7	135 SF	1,095 SF	194 SF	1,424 SF	Month-to-Month
8	135 SF	1,097 SF	-	1,232 SF	Leased until Jan 2027*
9	135 SF	1,097 SF	-	1,232 SF	Leased until Jan 2027*
10	135 SF	1,097 SF	-	1,232 SF	Leased until Jan 2027*
11	139 SF	1,114 SF	-	1,253 SF	Leased until Jan 2027*
3,336 SF		11,066 SF	1,525 SF	15,927 SF	*can be made vacant

\*\*14,692 SF can be potentially vacant upon Completion of Sale

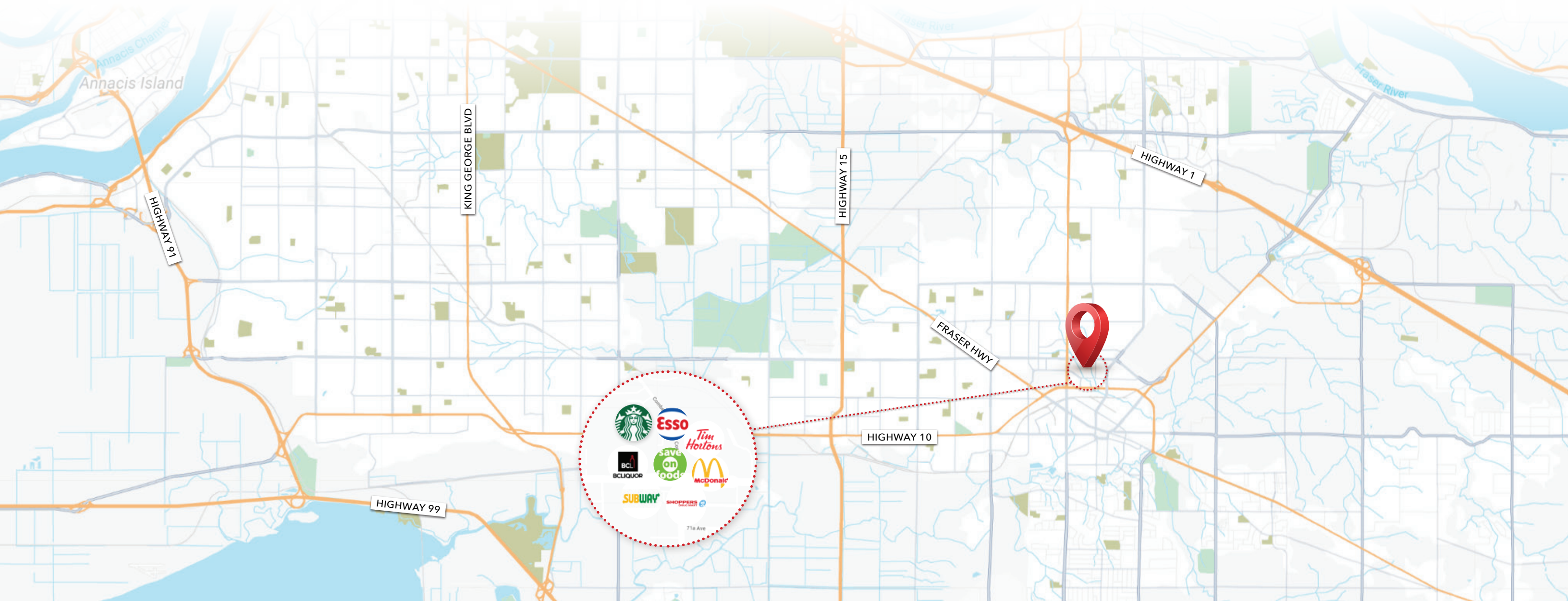


Location Overview

Strategically located on the east side of 200 Street, just north of Fraser Highway, the subject property offers excellent frontage along 202 Street. The property is situated near Fraser Highway and the Langley Bypass providing a vibrant mix of industrial, retail and service-oriented businesses. The property presents an exceptional opportunity for an owner/user or investor to acquire an industrial building in close proximity to the future SkyTrain extension. The neighborhood surrounding this property serves as a central commercial and retail hub in the Township of Langley, with a variety of amenities and high foot traffic.

Drive Times

<div>15</div>	Highway 15 13 min   5.8 km	<div>Golden Ears Bridge</div>	17 min   9.0 km	<div>17</div>	Highway 17 18 min   13.0 km
<div>1</div>	Trans-Canada Highway 12 min   6.0 km	<div>Port Mann Bridge</div>	19 min   18.3 km	<div>CAN USA</div>	Canada/U.S. Border 26 min   17.4 km
<div>Fraser Surrey Docks</div>	35 min   29.0 km	<div>YVR</div>	55 min   45.6 km	<div>13</div>	Highway 13 23 min   15.8 km





**6280 202 STREET**  
LANGLEY, BC



## INDUSTRIAL BUILDING **FOR SALE**

**Sebastian Espinosa** CCIM, SIOR  
Personal Real Estate Corporation  
Senior Vice President | Industrial  
D 604.630.3396 C 604.783.8139  
sebastian.espinosa@lee-associates.com

**Grant Basran**  
Associate Vice President | Industrial  
D 604.630.3376 C 604.518.2188  
grant.basran@lee-associates.com

© 2025 Lee & Associates Commercial Real Estate (BC) Ltd. ("Lee & Associates Vancouver"). All Rights Reserved. 626. E. & O.E.: Although the information contained within is from sources believed to be reliable, no warranty or representation is made by Lee & Associates Vancouver as to its accuracy being subject to errors, omissions, conditions, prior lease, withdrawal or other changes without notice and same should not be relied upon without independent verification.

