

# NEW JERSEY STATE HIGHWAY ROUTE NO. 22

75' R.O.W.

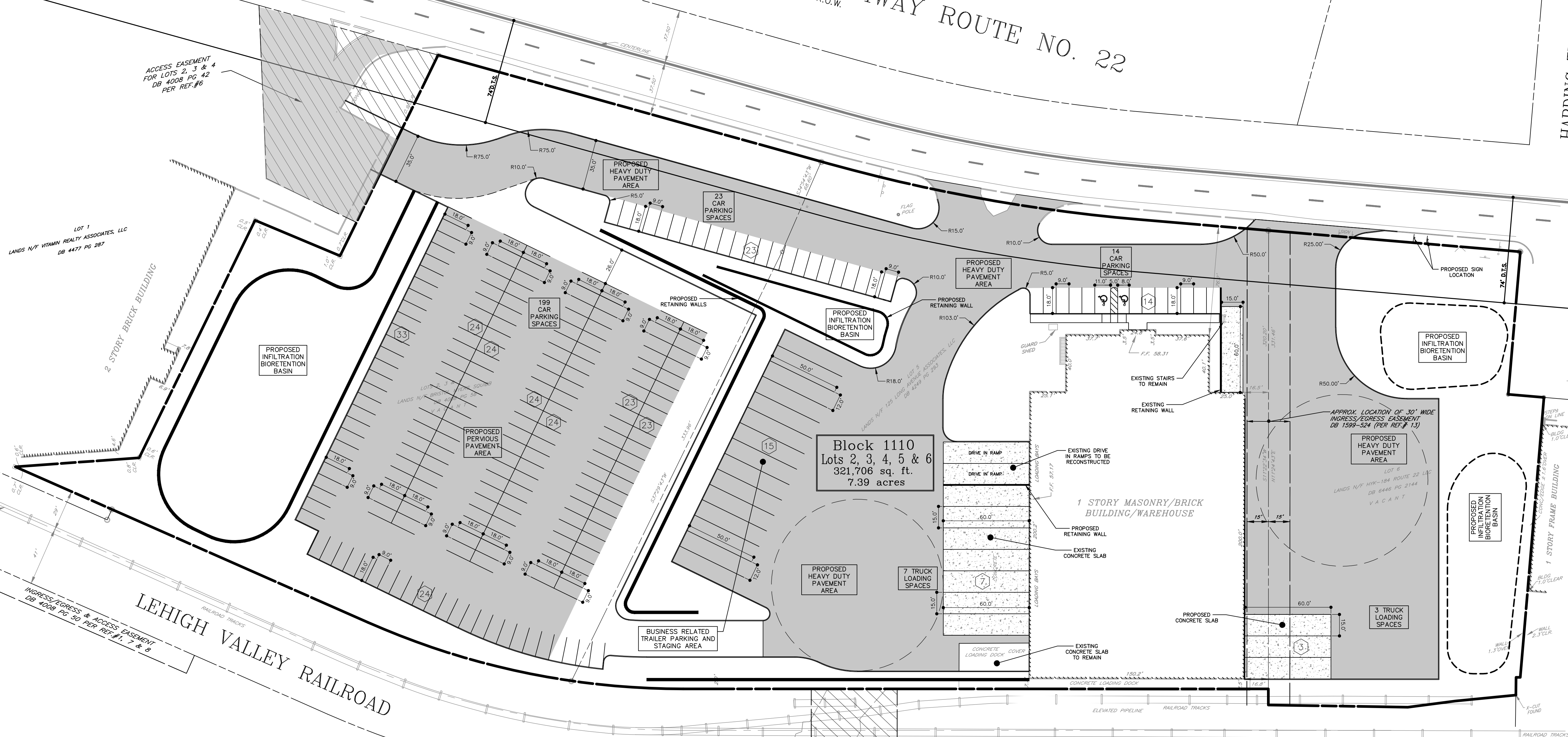
HARDING TERRACE  
50' R.O.W.

HARDING TER.  
UNIMPROVED 50' R.O.W.

LOT 1  
LANDS N/F VITAMIN REALTY ASSOCIATES, LLC  
DB 4477 PG 287

LOT 6  
LANDS N/F KS  
HOLDINGS  
DB 5905

LOT 7  
LANDS N/F HELLER ;  
BODY CORPORAT



Block 1110  
Lots 2, 3, 4, 5 & 6  
321,706 sq. ft.  
7.39 acres

1 STORY MASONRY/BRICK  
BUILDING/WAREHOUSE

IRVINGTON BRANCH

APPROXIMATE LOCATION OF  
"STREET OR WAY" DB 442  
PG 345 DB 456 PG 179  
PER REF.#9 & 10

LEHIGH VALLEY RAILROAD

ACCESS EASEMENT  
FOR LOTS 2, 3 & 4  
DB 4008 PG 42  
PER REF.#6

INGRESS/EGRESS & ACCESS EASEMENT  
DB 4008 PG 50 PER REF.#1, 7 & 8

APPROX. LOCATION OF 30' WIDE  
INGRESS/EGRESS EASEMENT  
DB 1599-524 (PER REF.# 13)