

GANTRY POINT

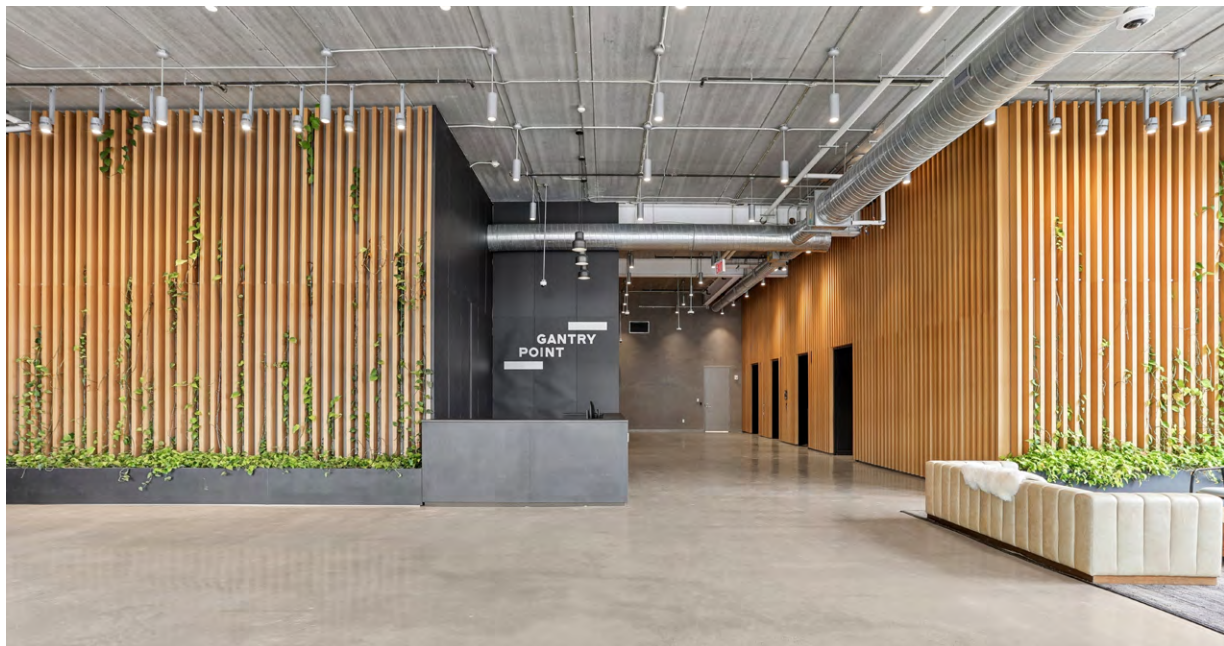
25-11 49TH AVENUE
LONG ISLAND CITY | NYC



AVISON
YOUNG

POINT_{of} INTERSECTION





Gantry Point marks the **intersection** where modern innovation meets the industrial roots of Long Island City. Positioned at the gateway between Manhattan and Queens, it's a pivotal point of connection—linking the energy of the city with the evolving landscape of Long Island. Spanning 240,000 RSF, the building is designed to impress, with light streaming in from all four sides, soaring ceilings that amplify openness, and multiple outdoor terraces that bring fresh air and inspiration. Conveniently located near the Long Island Expressway, just a block from the 7 train and Hunterspoint Avenue LIRR station, Gantry Point offers seamless access to Manhattan, Queens, and beyond. It's built for those who see possibility in every direction.

PRECISION *at every* POINT

AVAILABILITIES

9th Floor w/*Terrace*

8th Floor

7th Floor w/*Terrace*

6th Floor

5th Floor w/*Terrace*

Total

Office RSF

8,779 RSF

14,158 RSF

14,158 RSF

17,422 RSF

17,422 RSF

71,939 RSF

Terrace SF

3,500 SF

2,200 SF

2,200 SF

7,900 SF

SPACE HIGHLIGHTS

- Terrific views and ample natural light with windows on all four sides
- High ceilings throughout
- Side-core floor plates with minimal columns, ideal for diverse use groups
- Outdoor terrace spaces on the 5th, 7th and 9th floors

CEILING HEIGHTS

9th Floor

15' 2"

8th Floor

13' 1"

7th Floor

13' 1"

6th Floor

13' 1"

5th Floor

13' 1"

POSSESSION

Immediate

TERM

Negotiable

RATE

Upon Request

BUILDING HIGHLIGHTS

- Owner-occupied building
- Garden space adjacent to lobby
- Bicycle storage available
- Potential for on-site parking
- Potential building signage/branding opportunities

9th Floor – 8,779 RSF | 15'2" Ceiling with Terrace

8th Floor – 14,158 RSF | 13'1" Ceiling

7th Floor – 14,158 RSF | 13'1" Ceiling with Terrace

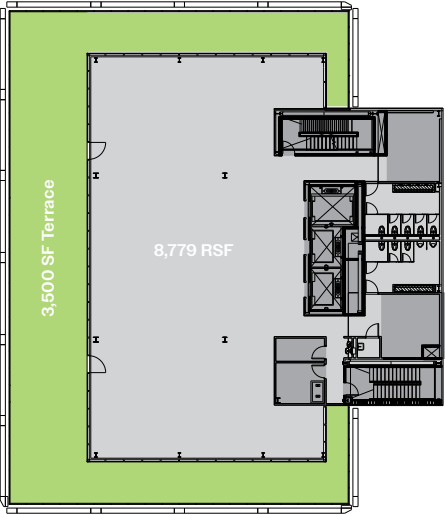
6th Floor – 17,422 RSF | 13'1" Ceiling

5th Floor – 17,422 RSF | 13'1" Ceiling with Terrace

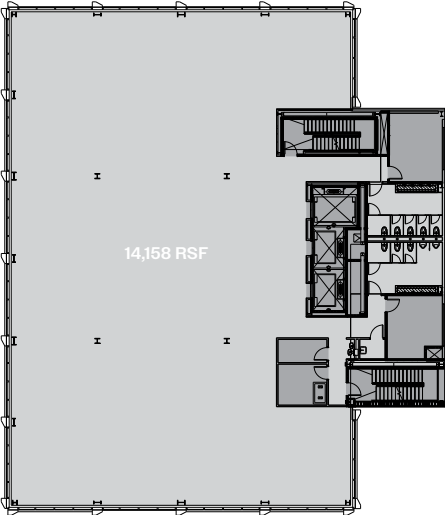




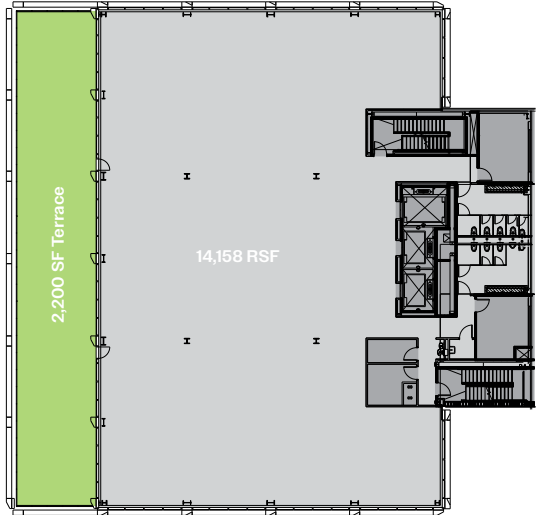
9TH FLOOR / 8,779 RSF / 3,500 SF



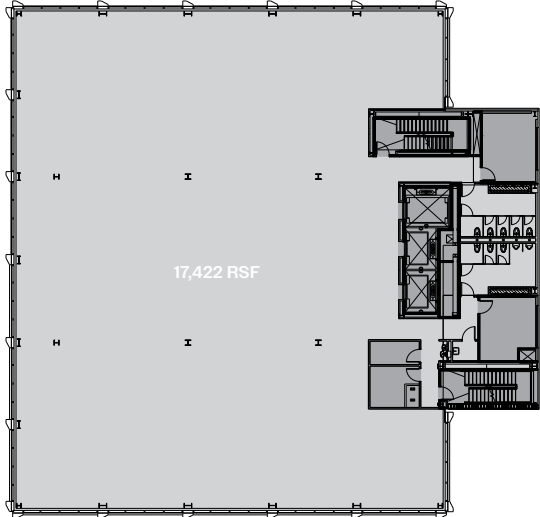
8TH FLOOR / 14,158 RSF



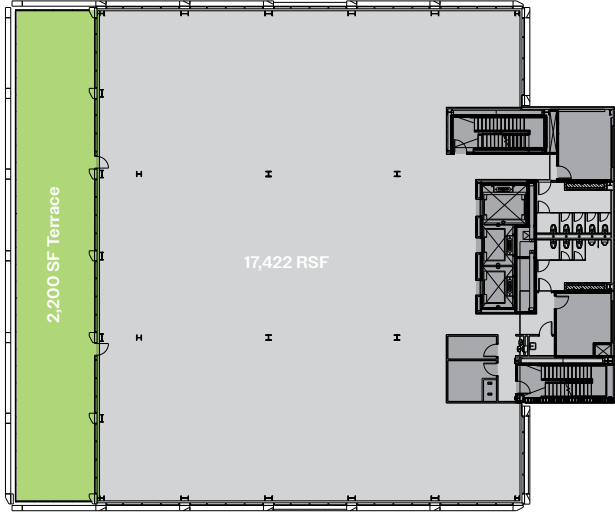
7TH FLOOR / 14,158 RSF / 2,200 SF

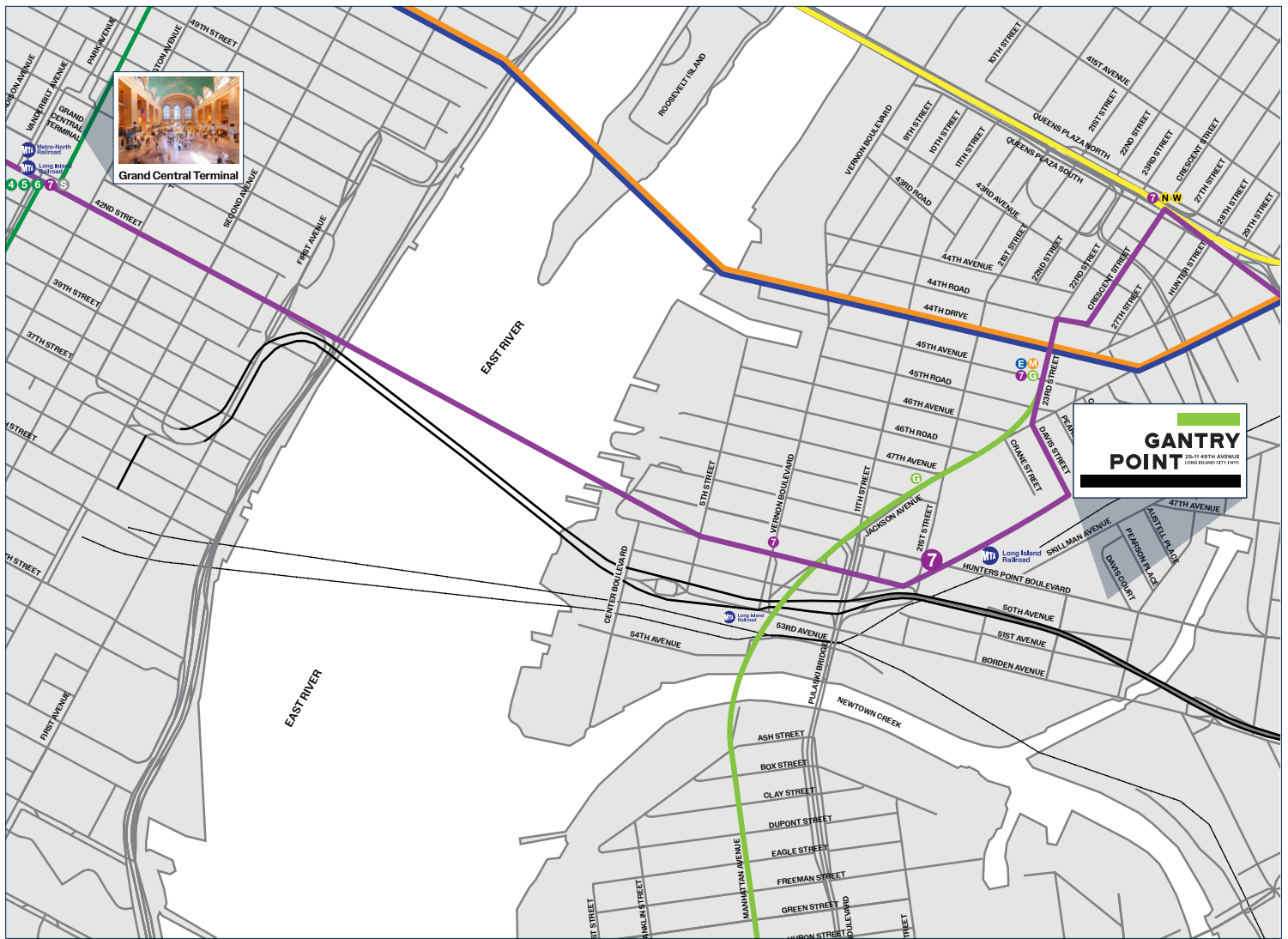


6TH FLOOR / 17,422 RSF



5TH FLOOR / 17,422 RSF / 2,200 SF





RIGHT on POINT

LOCATION

- Conveniently located near the Midtown Tunnel and off the LIE, Gantry Point will allow for easy access from Manhattan, Brooklyn, the Bronx, Queens and Long Island
- On-site parking is available

TRAVEL TIMES

- 11-minutes to Grand Central Terminal
- 20-minutes to Union Square
- 23-minutes to Hudson Yards
- 26-minutes to Penn Station

BY SUBWAY

- 5-minute walk to the Hunters Point 7 train and Hunterspoint Avenue MTA Long Island Railroad station
- 10-minute walk to 21st Street-Van Alst Station G train
- 1 stop away to Court Square Station
- 2 stops away to Grand Central Terminal with access to the

4 5 6 S, MTA Metro-North Railroad and MTA Long Island Railroad



GANTRY POINT

25-11 49TH AVENUE
LONG ISLAND CITY | NYC

For more information, please contact exclusive brokers:

PETER GROSS

Principal

212 858 9438 | 914 582 8275

peter.gross@avisonyoung.com

JOHN RYAN III

Principal

212 729 4971 | 917 923 3535

john.ryan@avisonyoung.com

THOMAS USHER

Associate

212 729 3974 | 203 571 2767

thomas.usher@avisonyoung.com



**AVISON
YOUNG**

Avison Young | 530 5th Avenue, Floor 4 | New York, NY 10036 | T. 212 729 7140 | F 917 591 9300 | avisonyoung.com

© 2025 Avison Young - New York, LLC. All rights reserved. E. & O.E.: The information contained herein was obtained from sources which we deem reliable and, while thought to be correct, is not guaranteed by Avison Young.