



SAN FRANCISCO, CA 94103

81 Lafayette Street

+/- 3,500 RSF

BOUTIQUE SOMA BUILDING
Highly Creative Stand-Alone
Building
High Exposed Ceilings w/
30' clear height

CHARLIE CUTLER

Partner
Email: charlie@calco-sf.com
Cell: 415.850.4935
DRE #02026787

MARIO PREVITALI

Senior Vice President
Email: mario@calco-sf.com
Cell: 415.755.8905
DRE #01902075



We're Here to Help – Reach Out Today!

425 2nd St. Suite 450, San Francisco, CA 94107 | info@calcosf.com | (415) 970-0000 | calcosf.com

BUILDING OVERVIEW

| 81 Lafayette St.

81 LAFAYETTE is a standalone light-industrial/flex building positioned at the corner of Lafayette and Natoma. Its layout and infrastructure make it well-suited for office/flex users, creative production, and advanced manufacturing. The property also benefits from immediate access to major transportation corridors and nearby amenities.

PROPERTY HIGHLIGHTS

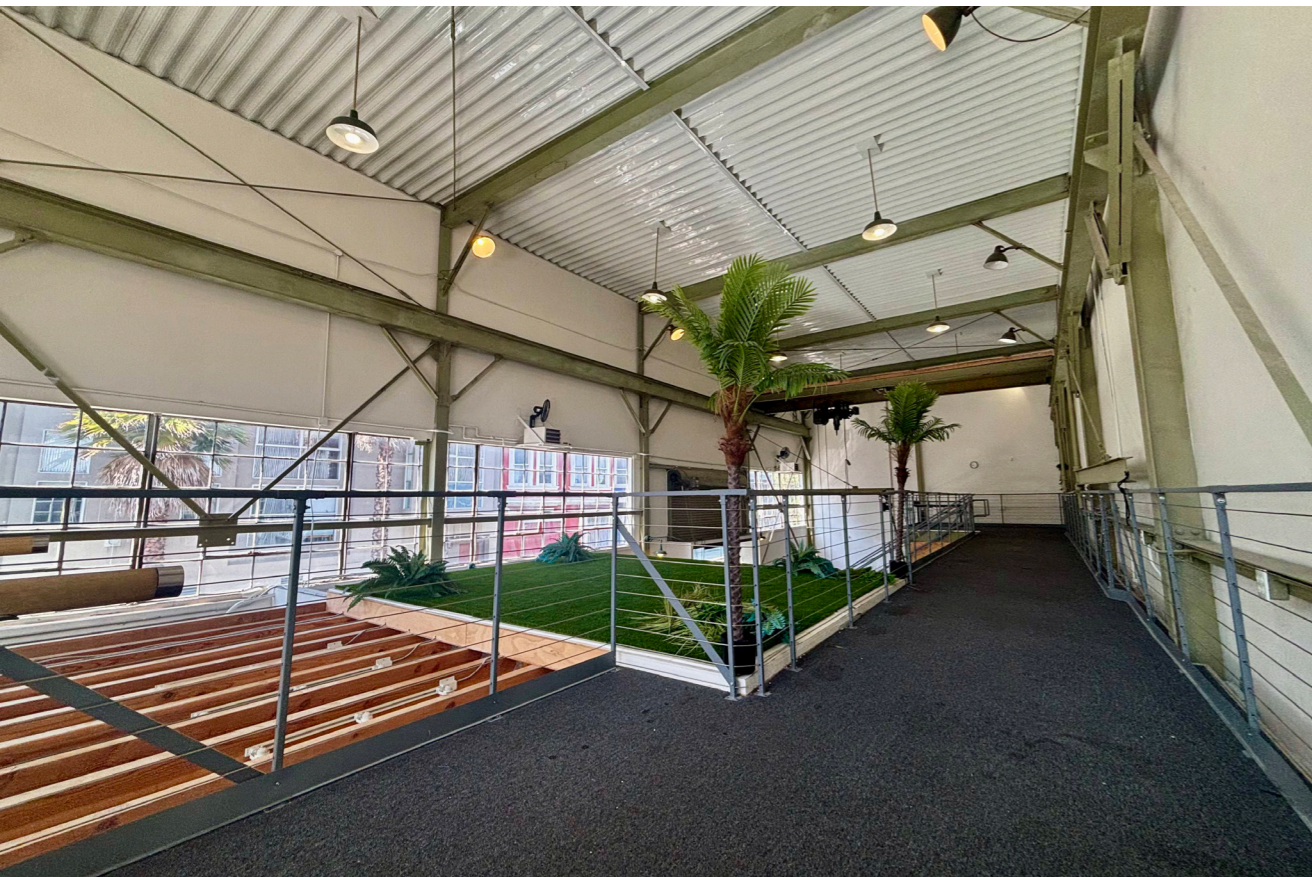
- Highly Creative Stand-Alone Building
- Boutique SOMA Building
- High Exposed Ceilings w/ 30' Clear Height
- Polished Concrete Floor Throughout
- Historic Aesthetic Features Throughout
- Quiet Side Street
- 2 Restrooms
- 2 Meeting Rooms
- Open Space Bullpen Areas
- Work Shop Space
- Natural Light Throughout
- Roll-up Door Access
- Heavy Power Supply: 450a/230v 3p 4w
- Kitchen Area



GALLERY

| 81 Lafayette St.

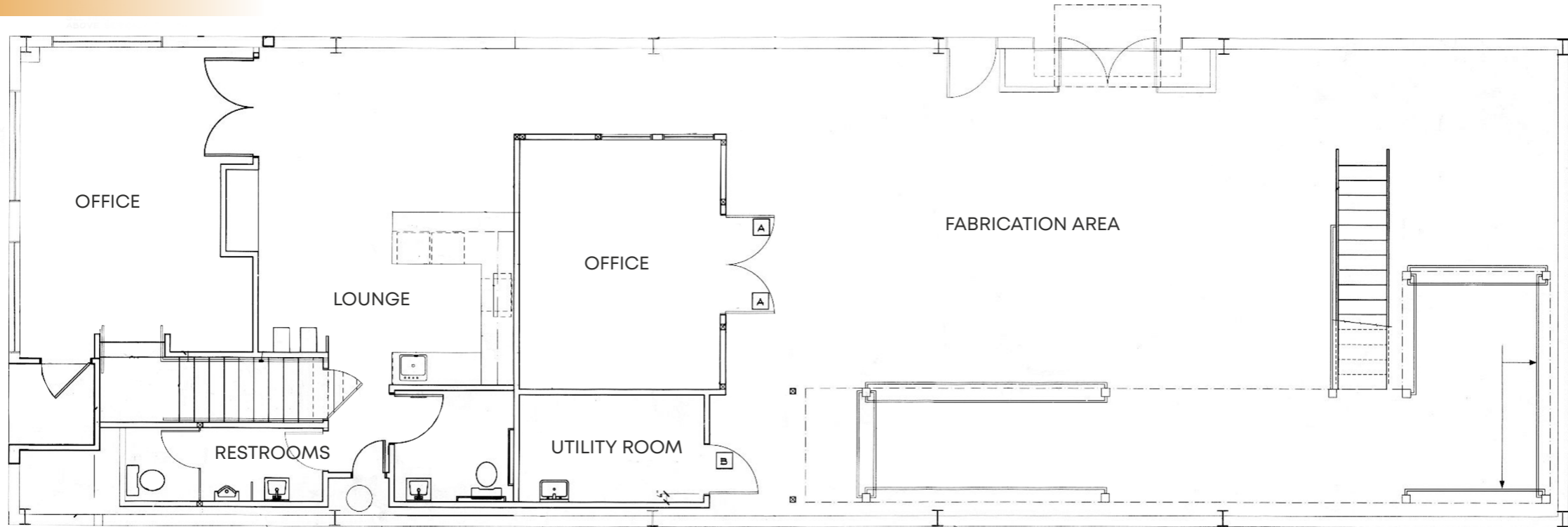
 **CALCO**
COMMERCIAL, INC.



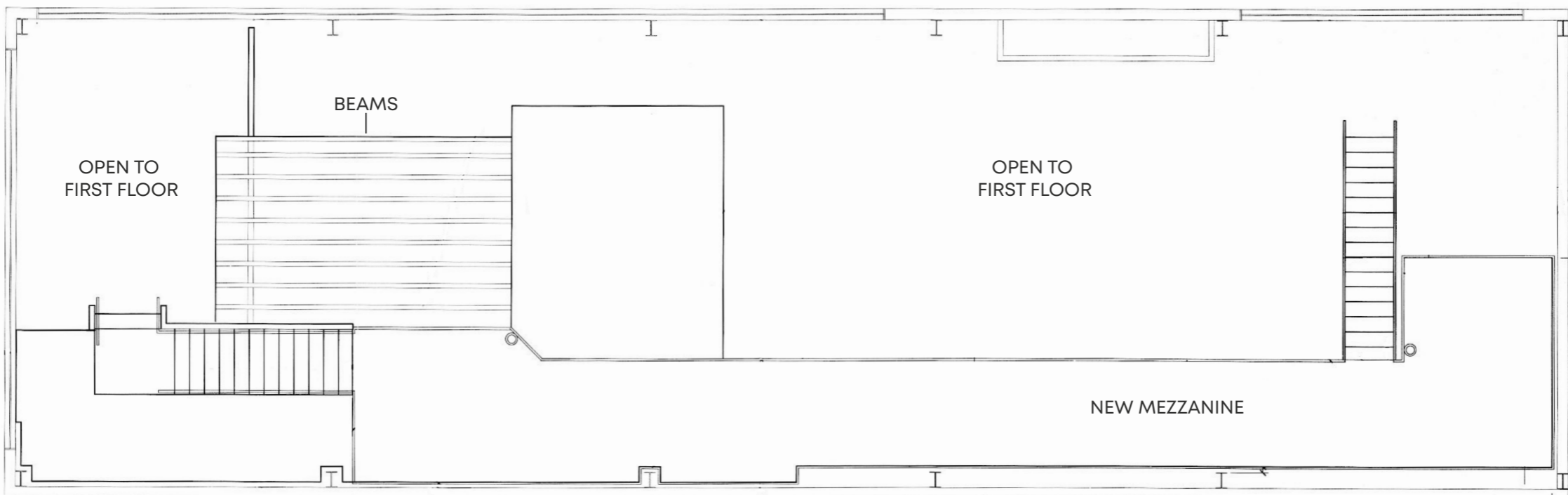
FLOOR PLAN

| 81 Lafayette St.

First Floor



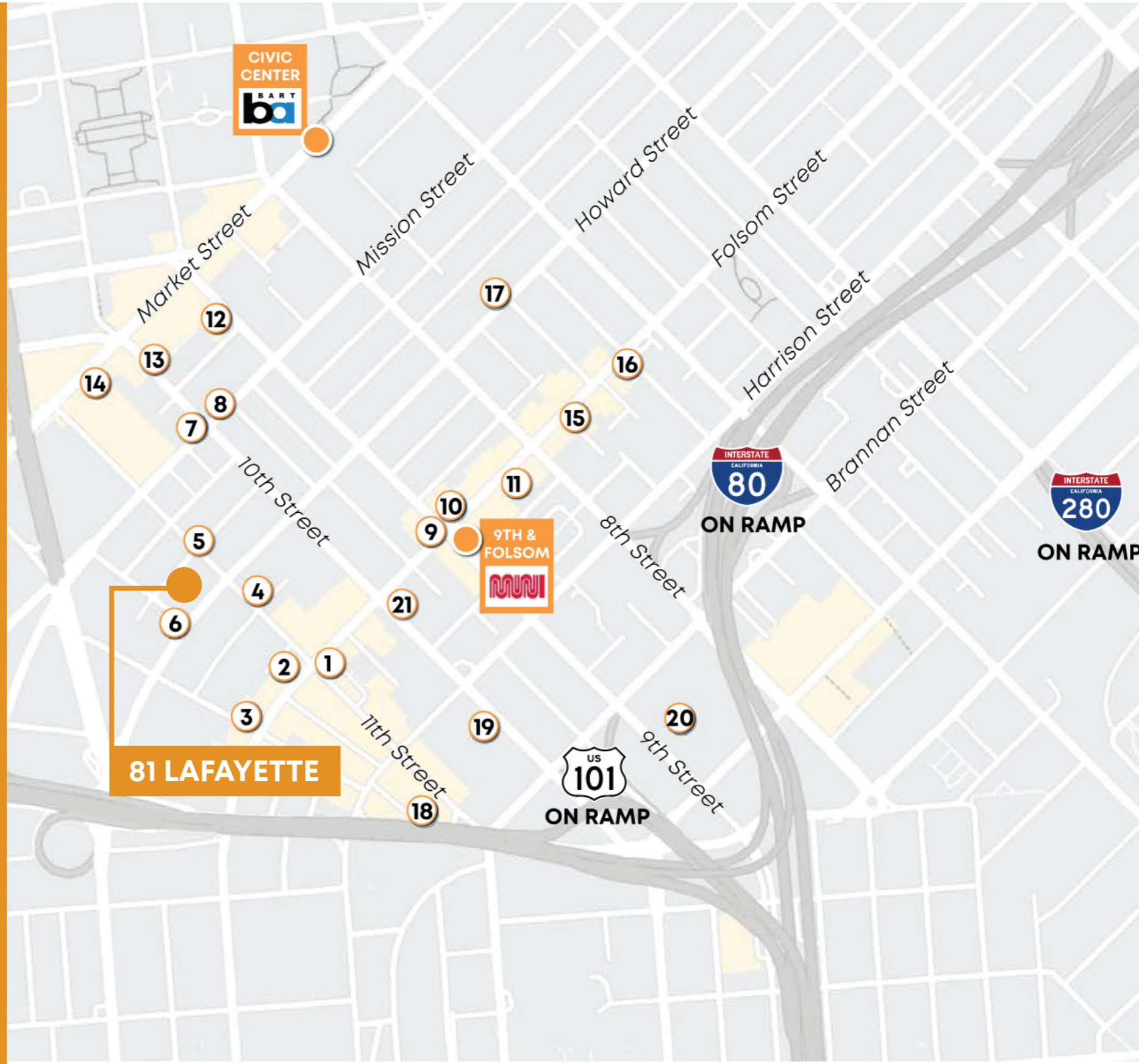
Mezzanine



NEARBY AMENITIES

| 81 Lafayette St.

- 1 - Basil Thai Restaurant & Bar
- 2 - Don Ramons
- 3 - Rocco's Cafe
- 4 - Kama Sushi Soma
- 5 - Azucar Lounge
- 6 - Driftwood
- 7 - Cellamaker Brewing & Co
- 8 - Peet's Coffee
- 9 - Cadillac Outdoor Bar & Grill
- 10 - Cumaica: Artesanos del Cafe
- 11 - Blue Bottle Coffee
- 12 - Kagawa-Ya Udon
- 13 - Basil Canteen
- 14 - Eat Sushi Restaurant
- 15 - Sushi Ondo
- 16 - Joint Venture
- 17 - Costco Wholesale
- 18 - Trader Joe's
- 19 - SoMa StrEat Food Park
- 20 - The Willows





CHARLIE CUTLER

Partner
Email: charlie@calco-sf.com
Cell: 415.850.4935
DRE # 02026787

MARIO PREVITALI

Senior Vice President
Email: mario@calco-sf.com
Cell: 415.755.8905
DRE #01902075

PIONEERING REAL ESTATE SOLUTIONS WITH PROVEN EXPERTISE

Calco Commercial, founded in 2011 by Scott Mason, brings over 35 years of experience and 2,500+ transactions, totaling over \$2.2 billion in sales and leases. Specializing in leasing and sales of commercial real estate in the San Francisco Bay Area and nationwide, we consistently rank as a top-producing firm. With deep knowledge of the Bay Area market, our team offers clients over three decades of expertise and exceptional customer service, providing the tools and guidance to navigate the ever-changing commercial real estate landscape.