

## LEASABLE COMMERCIAL AREA

BASEMENT: 1590 SF

FIRST FL: 1442 SF

FIRST FL MEZZ: 484 SF

TOTAL: 3516 SF

## BASEMENT PLAN - SCHEME 3

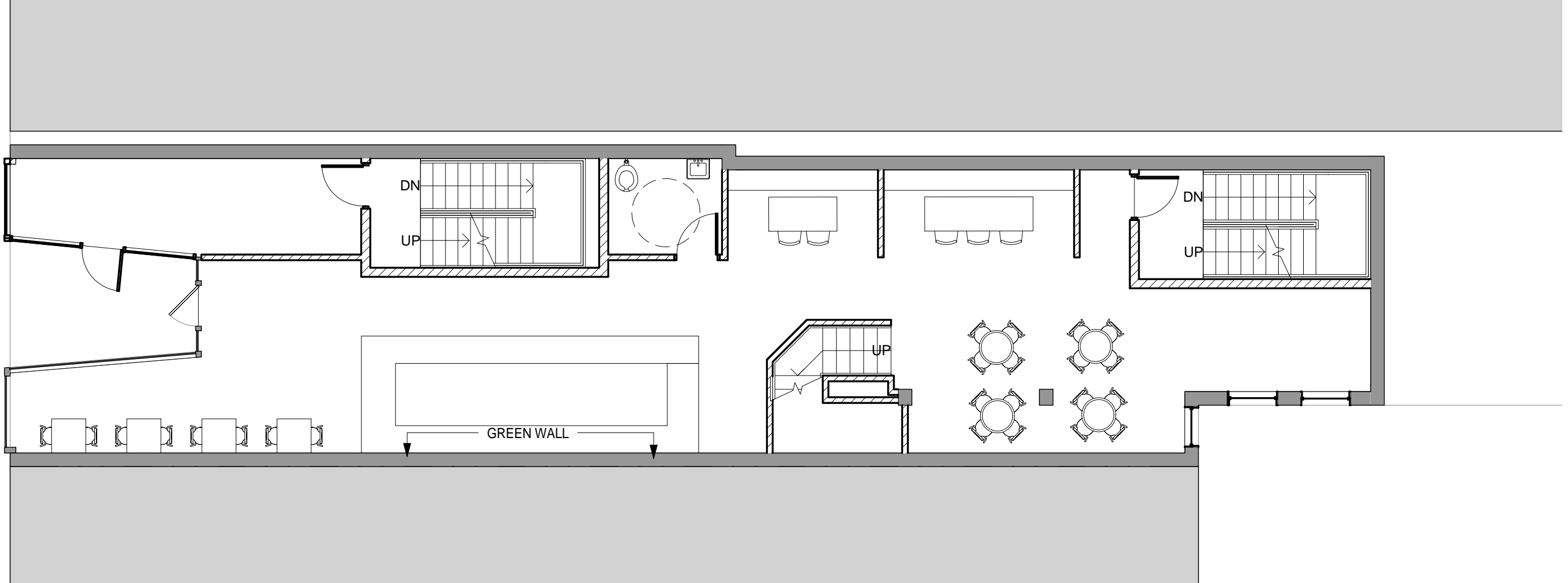
1/8" = 1'-0"

317 N Charles Street

SEPTEMBER 2017

**JRS ARCHITECTS**

2010 Clipper Park Road, Suite 101, Baltimore MD 21211 410.235.7256 [acastro@jrsarchitects.com](mailto:acastro@jrsarchitects.com)



## LEASABLE COMMERCIAL AREA

BASEMENT: 1590 SF

FIRST FL: 1442 SF

FIRST FL MEZZ: 484 SF

TOTAL: 3516 SF

## FIRST FL PLAN - SCHEME 3

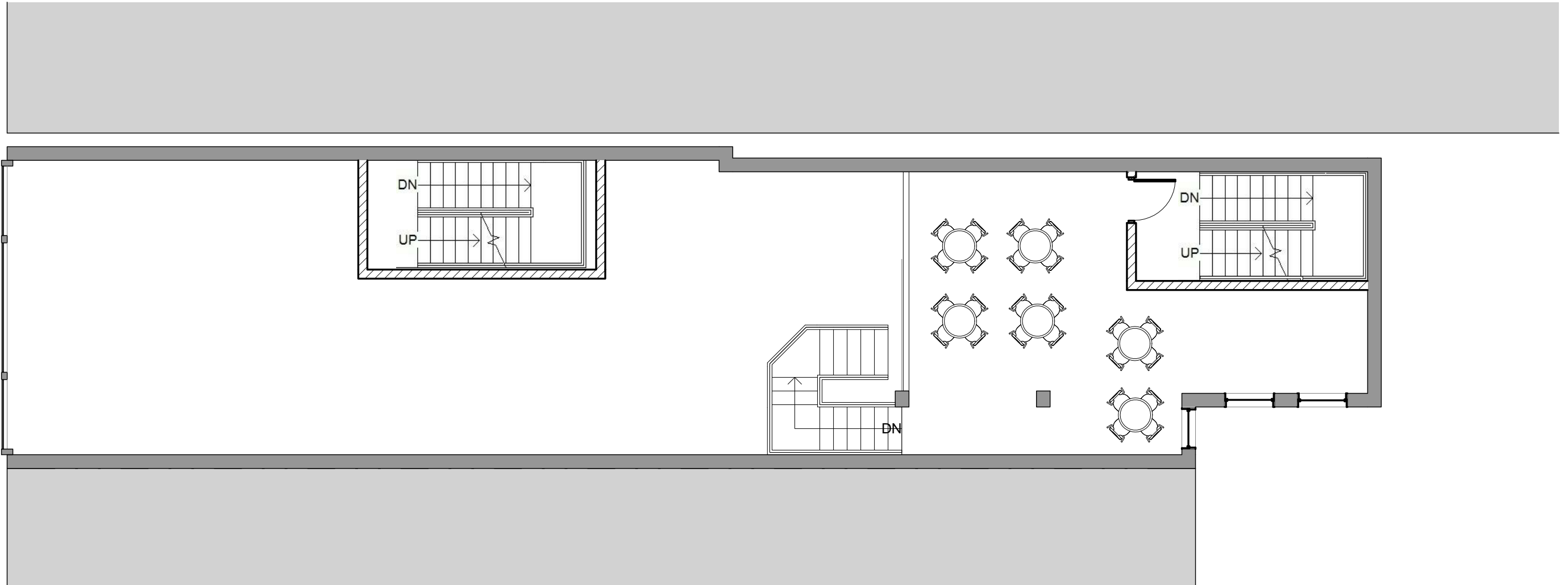
1/8" = 1'-0"

317 N Charles Street

SEPTEMBER 2017

**JRS ARCHITECTS**

2010 Clipper Park Road, Suite 101, Baltimore MD 21211 410.235.7256 [acastro@jrsarchitects.com](mailto:acastro@jrsarchitects.com)



**LEASABLE COMMERCIAL AREA**

BASEMENT: 1590 SF  
 FIRST FL: 1442 SF  
 FIRST FL MEZZ: 484 SF

TOTAL: 3516 SF

**FIRST FL MEZZ PLAN - SCHEME 3**

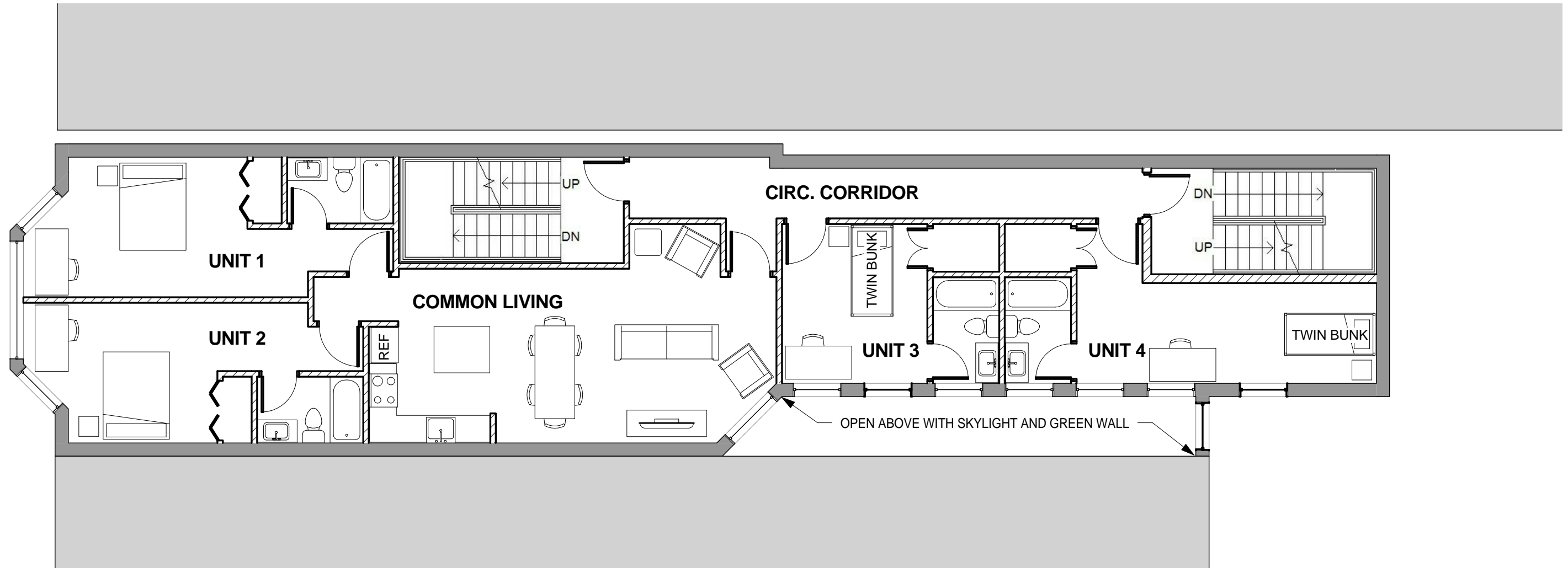
1/8" = 1'-0"

317 N Charles Street

SEPTEMBER 2017

**JRS ARCHITECTS**

2010 Clipper Park Road, Suite 101, Baltimore MD 21211 410.235.7256 acastro@jrsarchitects.com



## RENTABLE RESIDENTIAL AREA

UNIT 1: 268 SF  
 UNIT 2: 249 SF  
 UNIT 3: 197 SF  
 UNIT 4: 258 SF  
 COMMON LIVING: 427 SF  
 CIRC. CORRIDOR: 171 SF  
**TOTAL: 1570 SF**

## SECOND FL PLAN - SCHEME 3

1/8" = 1'-0"

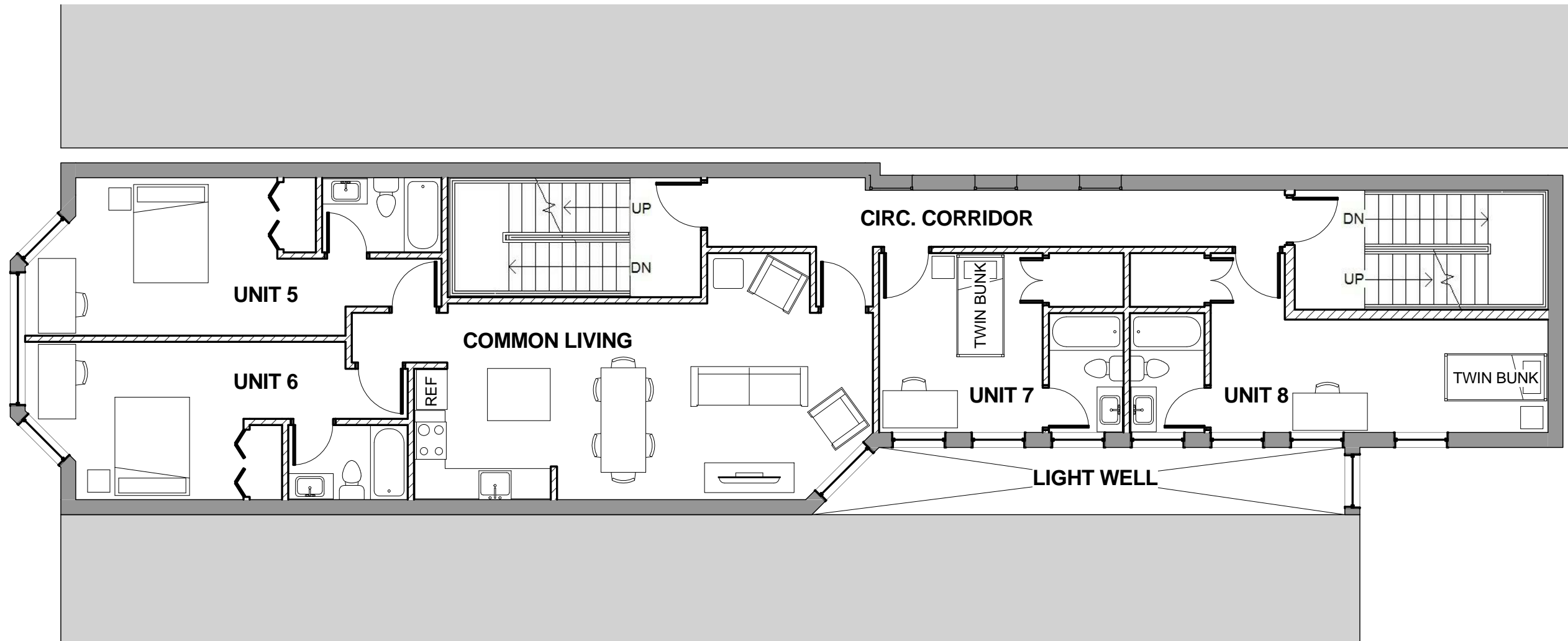
317 N Charles Street

SEPTEMBER 2017

**JRS ARCHITECTS**

2010 Clipper Park Road, Suite 101, Baltimore MD 21211 410.235.7256 acastro@jrsarchitects.com

9/26/2017 8:30:47 PM



## RENTABLE RESIDENTIAL AREA

UNIT 5: 268 SF  
 UNIT 6: 249 SF  
 UNIT 7: 197 SF  
 UNIT 8: 258 SF  
 COMMON LIVING: 427 SF  
 CIRC. CORRIDOR: 171 SF  
**TOTAL: 1570 SF**

## THIRD FL PLAN - SCHEME 3

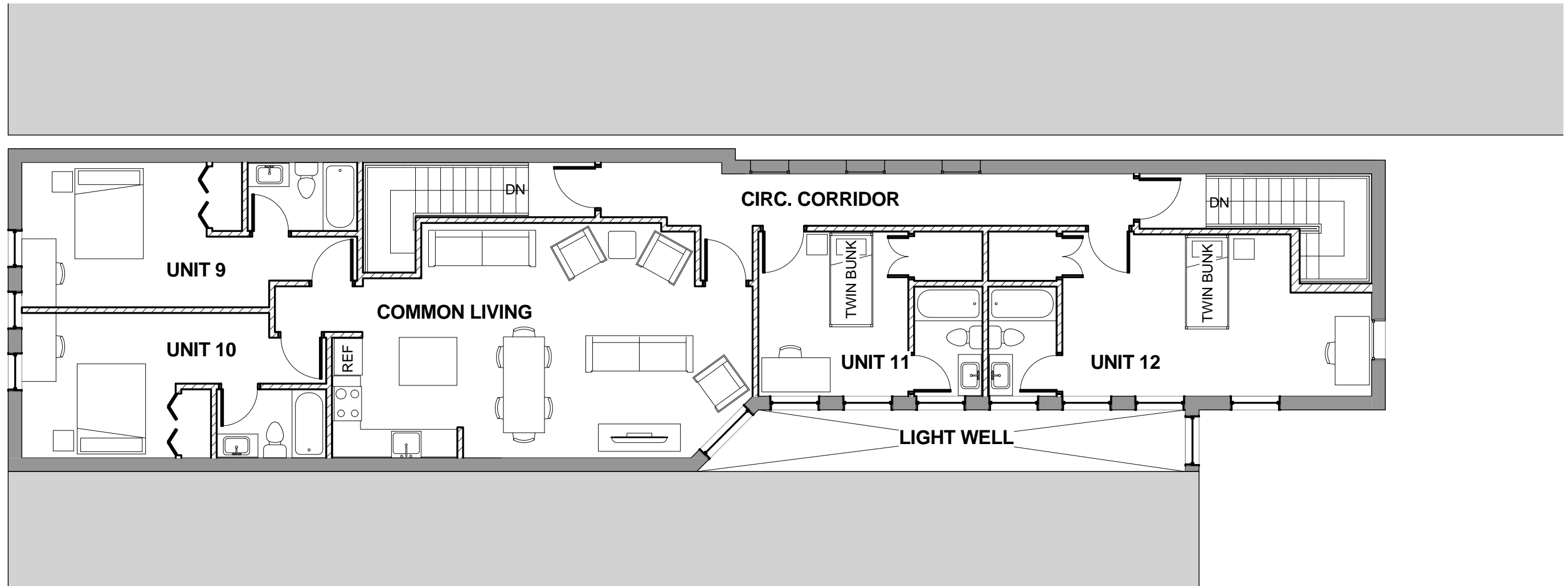
317 N Charles Street

SEPTEMBER 2017

1/8" = 1'-0"

**JRS ARCHITECTS**

2010 Clipper Park Road, Suite 101, Baltimore MD 21211 410.235.7256 acastro@jrsarchitects.com



## RENTABLE RESIDENTIAL AREA

UNIT 9: 268 SF  
 UNIT 10: 249 SF  
 UNIT 11: 197 SF  
 UNIT 12: 258 SF  
 COMMON LIVING: 482 SF  
 CIRC. CORRIDOR: 167 SF  
**TOTAL: 1621 SF**

## FOURTH FL PLAN - SCHEME 3

317 N Charles Street

SEPTEMBER 2017

1/8" = 1'-0"

**JRS ARCHITECTS**

2010 Clipper Park Road, Suite 101, Baltimore MD 21211 410.235.7256 [acastro@jrsarchitects.com](mailto:acastro@jrsarchitects.com)