



2560 Renaissance Boulevard

King of Prussia, PA

+/- 12,691 DF (Divisible) Sublease in Renaissance Park

2560 Renaissance Blvd Sublease

BUILDING OVERVIEW

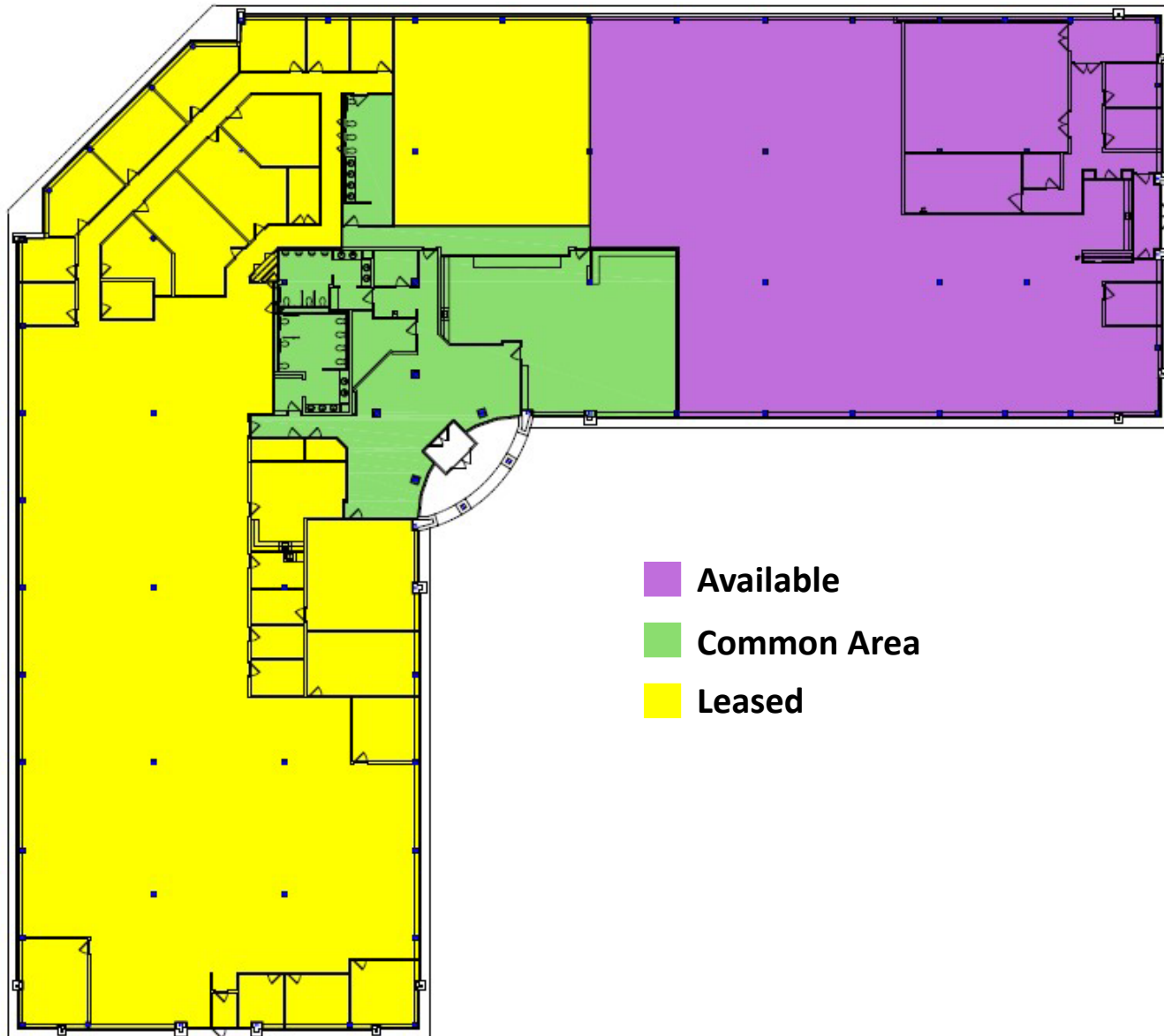
2560 Renaissance Boulevard is a single-story building in Renaissance Park located in the heart of King of Prussia. The single-story building has easy access to the Schuylkill Expressway (I-76), Pennsylvania Turnpike (I-276), the Blue Route (I-476), and Route 202, making it an ideal destination to attract and retain talent. The building also features an abundant 5.00/1,000 SF parking ratio, which is steps away from Renaissance Park's network of walking and biking trails that wind through the 100-acre campus.

SUBLEASE HIGHLIGHTS

- +/- 12,691 SF (divisible) highlighted in purple
- Existing furniture can be made available
- Lease expiration of 7/31/2032
- Asking rental rate of \$17.50/SF + Electric
- Minutes from I-76, I-476 and PA Turnpike (I-276)
- Walking distance to public transportation
 - Hughes Park Transit Stop (Norristown High Speed Line)
 - SEPTA 95, 124, and 125 routes



2560 Renaissance Blvd Floor Plan



FOR MORE INFORMATION
PLEASE CONTACT:

BRIAN LAFOND
Tenant Representative
215-519-3077
blafond@gola.com

SHANE ALLEN
Tenant Representative
610-906-6850
sallen@gola.com

GOLA CORPORATE REAL ESTATE, INC.

2490 Boulevard Of The Generals
Suite 100
Norristown, PA 19403
610-631-0333

www.gola.com

