

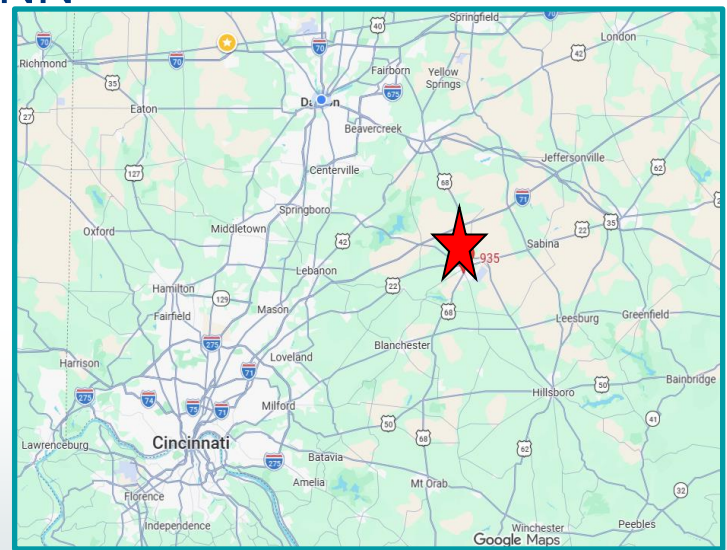


King Commons Shopping Center

935 S. South Street
Wilmington, Ohio 45177

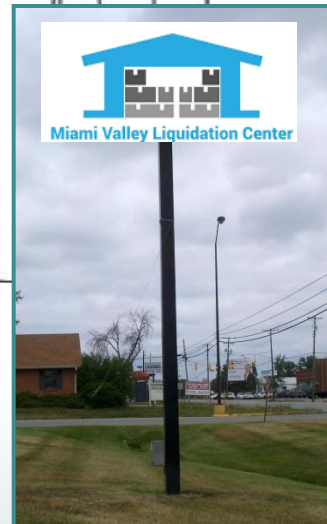
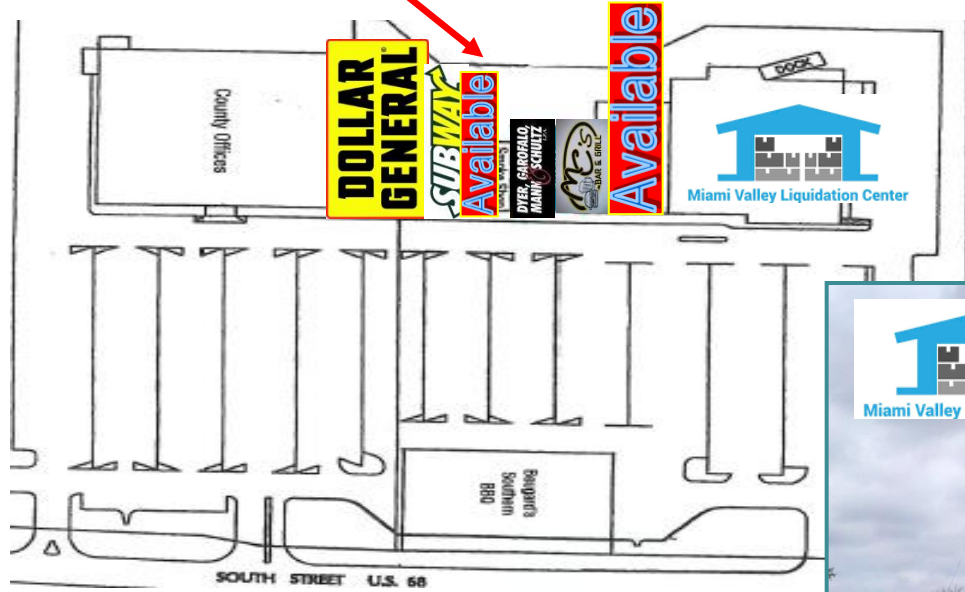
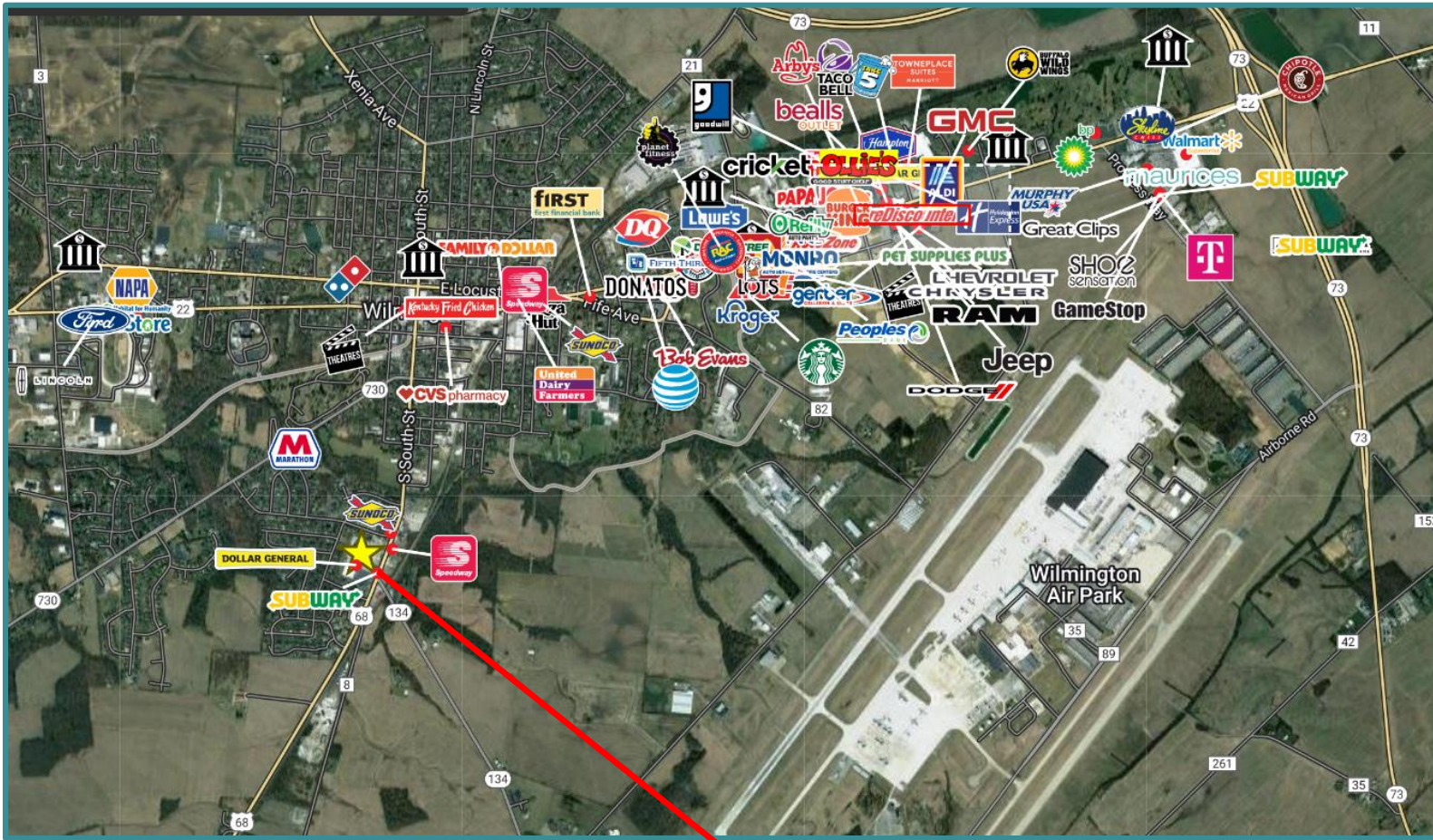
- .59,973 sf Shopping Center
- . Located in Wilmington, OH, on US 68
- . 1,600 sf (address 989 S South Street; former hair salon) =
For Lease: \$12.00 PSF + \$2.74 NNN
- . 13,293 sf (address 953 S South Street; former Greater Cincinnati Behavioral Health 8/31/2026)
For Lease: \$14.00 PSF + \$2.74 NNN
- . Ample Parking
- . Below Market Rates!
- . Pylon Signage Available

For More Information, Please Contact:
Tracey Herron
Sr. V.P. of Commercial Sales & Leasing
Mobile: 937.216.4636 therron@equity.net



Equity LLC | O: 937.291.1179 | F: 937.291.1547 | www.equity.net
11 West Monument Avenue, Suite 506 | Dayton, OH 45402

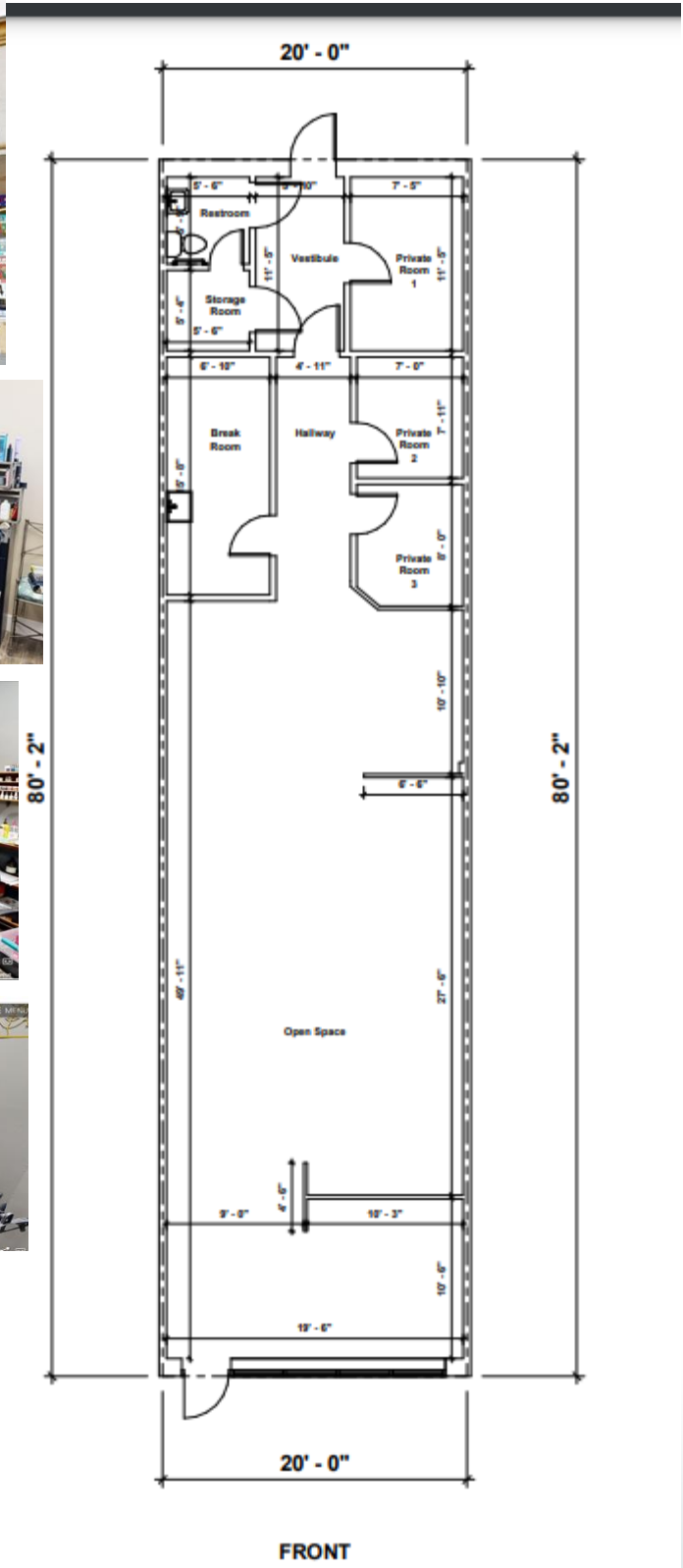
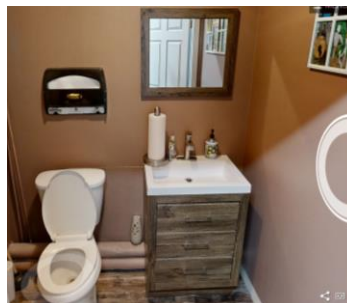
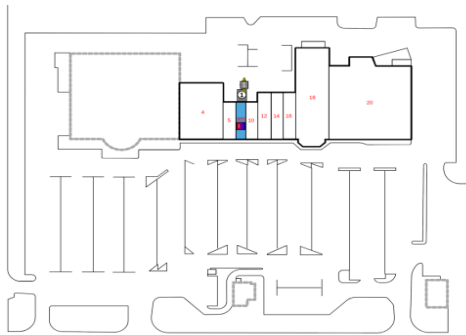
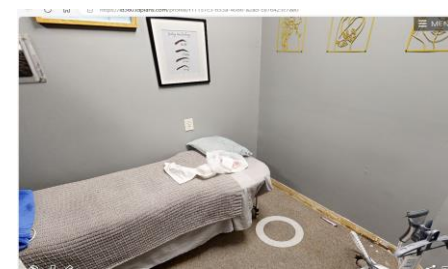
The information contained herein has been obtained from the property owner or other sources that we deem reliable. Although we have no reason to doubt its accuracy, no representation or warranty is made regarding the information, and the property is offered "as is". The submission may be modified or withdrawn at any time by the property owner.



Demographics	1 mi.	3 mi.	5 mi.
Population	4,564	14,223	17,972
Avg. HH Income	\$75,147	\$84,247	\$93,046

Equity Inc. | O: 937.291.1179 | F: 937.291.1547 | www.equity.net
11 West Monument Avenue, Suite 506 | Dayton, OH 45402

Salon Pictures and Floorplan-1,600 SF ~ 989 S. South Street



Office Floorplan-13,293 SF ~ 953 S. South Street

Includes new carpet and paint selected by Tenant from Landlord's standards

GCBHS

953 S. South Street, Wilmington, Ohio 45177

