



Tiviot Dale,  
Stockport, SK11TB

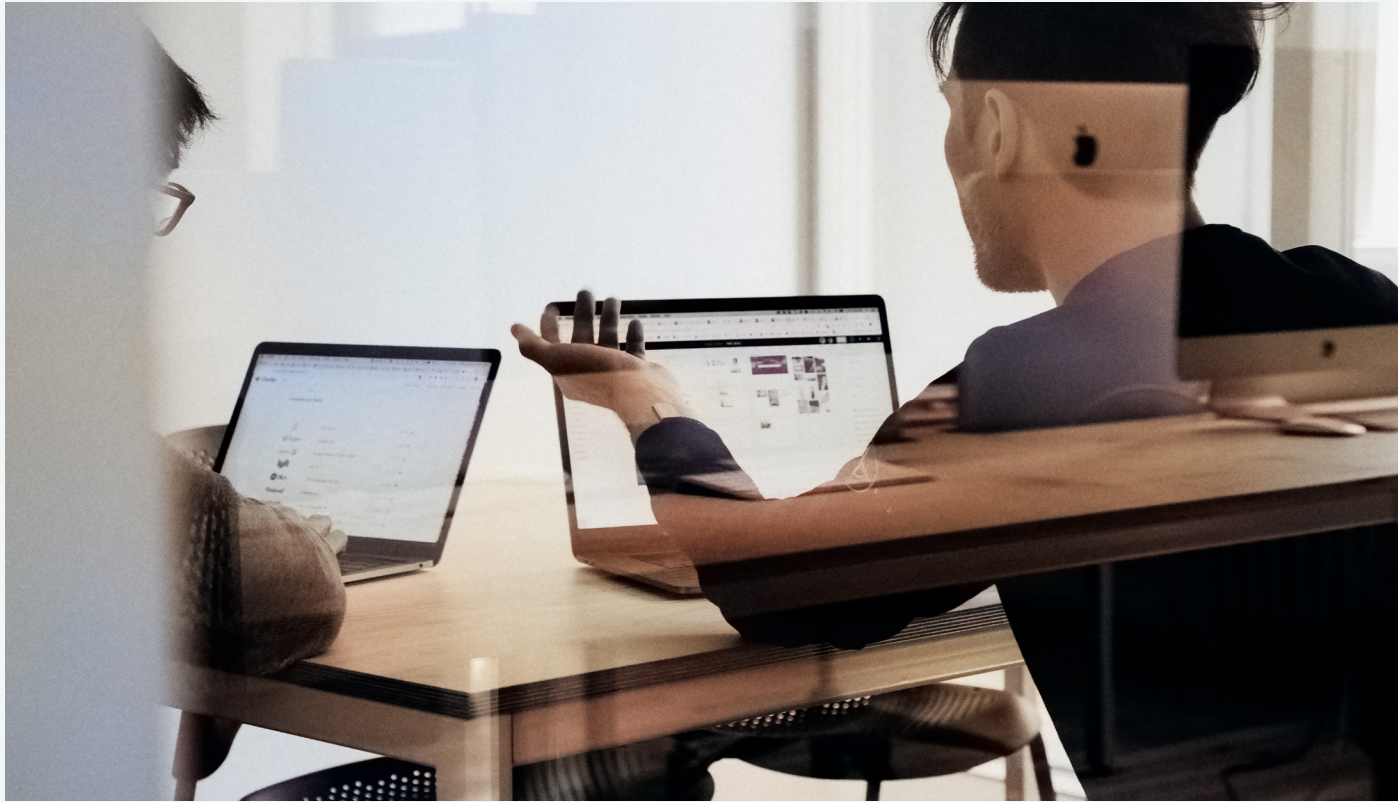
# Office Space In The *Heart Of Stockport*

A blend of serviced and leased  
office space available to let.



MCR  
PROPERTY  
GROUP





# All You Need, All In One Price

Choose Dale House and get everything you need to work— all in one place, on one convenient bill. Perfect for businesses looking for a simplified, effective workspace solution, with flexible terms to suit you.

# Key Features



# Brand New Leased Office Space Now Available



Dale House, a landmark nine-story office building in the heart of Stockport, ideally positioned next to the bustling Redrock & Merseyway Shopping Centre and visible from the M60 motorway. Recently renovated to host a state-of-the-art business centre, Dale House offers a blend of traditional lease and serviced office spaces.



Social & Breakout  
Areas



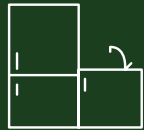
Flexible Office  
Layout



Room For  
Growth



Natural  
Light



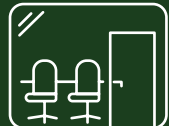
Communal  
Kitchen



Managed  
Reception



Flexible  
Terms



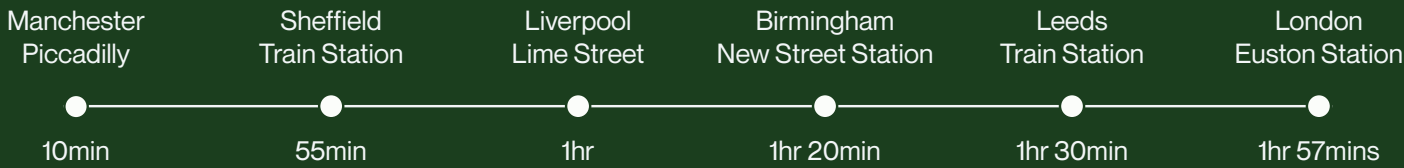
Private Office  
Space



# Working in the Heart of Stockport

Whether you're looking for somewhere to grab your lunch or a place to socialise with colleagues, you will find exactly what you need within minutes of Dale House.

The building is strategically positioned to give your business the advantage. With excellent transport links to Manchester and local amenities, it serves as a nexus of commerce in Stockport.



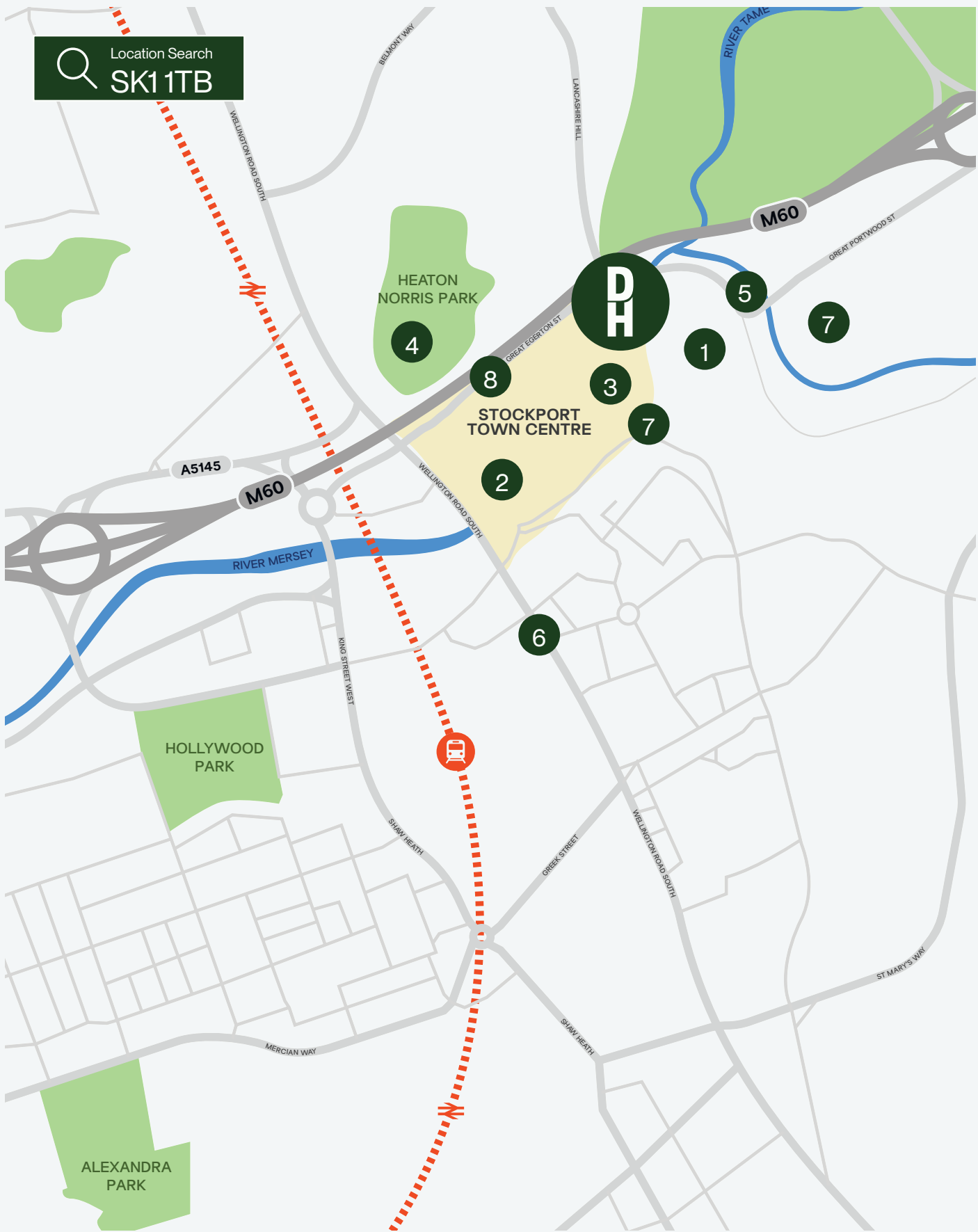
## Stockport Underbanks

The Underbanks in Stockport is a historic area with narrow streets and a blend of medieval and Victorian architecture. Once a bustling commercial center, it's now revitalised with independent shops, cafes, and creative businesses.



## Foodie Friday

Foodie Friday in Stockport is a monthly event in the Market Place, featuring street food, drinks, and live music. It draws crowds with diverse cuisines and a lively, community vibe, making it a key event in Stockport's social calendar.



- |  |  |                                     |
|--|--|-------------------------------------|
| 1 Asda Superstore   4 minutes walk           | 3 Costa Coffee   4 minutes walk        | 6 McDonald's   13 minutes walk      |
| 2 Merseyway Shopping Centre   2 minutes walk | 4 Heaton Norris Park   10 minutes walk | 7 King St Car Park   6 minutes walk |
| Stockport Train Station   18 minutes walk    | 5 Subway   4 minutes walk              | 8 Redrock   5 minutes walk          |



# Space to Thrive, Connect & Live



## Redrock

Redrock Stockport is your go-to for entertainment and leisure. Watch the latest films in style at The Light cinema with luxury seating, enjoy a round of bowling, or try out the arcade games. Afterward, grab a meal at one of the family-friendly restaurants and stay on top of your fitness at The Gym. It's the perfect mix of fun and wellness in one vibrant destination.



## Green Spaces

Stockport is home to beautiful parks and nature spots like Vernon Park and the River Mersey walks. These green spaces offer a peaceful escape from urban life, with well-maintained trails, gardens, and play areas perfect for family outings, picnics, or a relaxing stroll.

## Dining and Nightlife

Stockport's dining scene is diverse, offering a mix of independent eateries and popular chains. From cozy cafes and family-friendly restaurants to lively pubs and trendy bars, there's something to suit every taste. Whether you're after a quick bite or a special night out, Stockport's restaurants and nightlife offer plenty of choices.



## Stockport Plaza

Stockport Plaza is a 1930s art deco theatre and cinema, renowned for its stunning interiors and historical charm. Hosting live performances, concerts, and classic films, it offers a nostalgic entertainment experience. The on-site café adds to the appeal with traditional afternoon teas, making The Plaza a beloved cultural destination in Stockport.



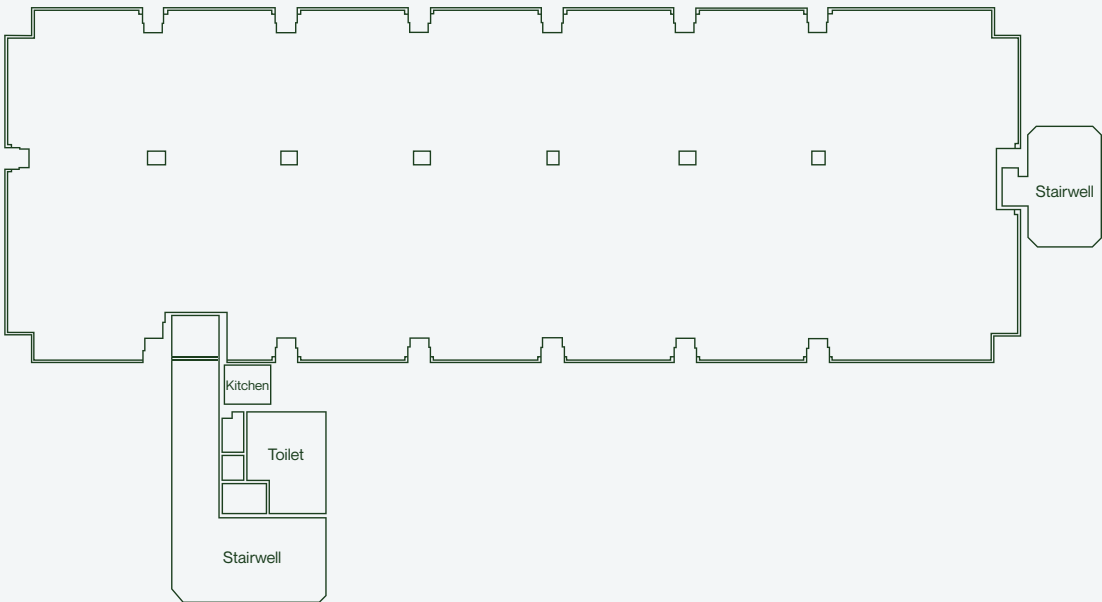
# Our Leased Offices

Our leased offices are for companies that want to personally build a work environment in their own image. Included comprehensive amenities such as a manned reception, security, high-speed internet, and IT support, making them ideal for companies looking to create an environment exclusive to them.

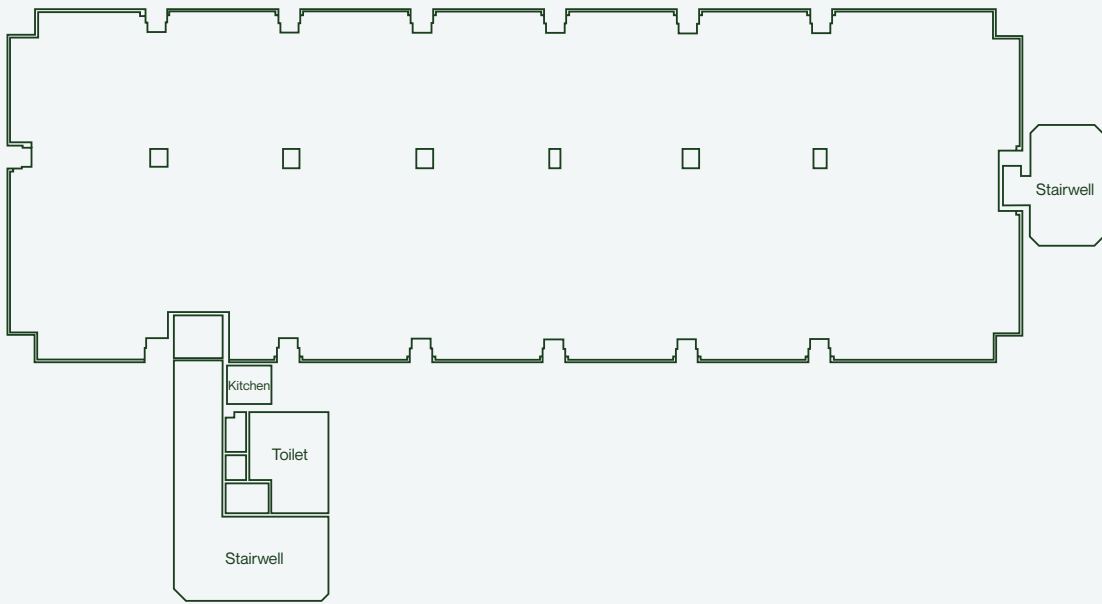
Lease to any size and scale up or down with flexible contracts. Bring your own furniture. Manage your own bill payments. Brand your surroundings as you see fit.



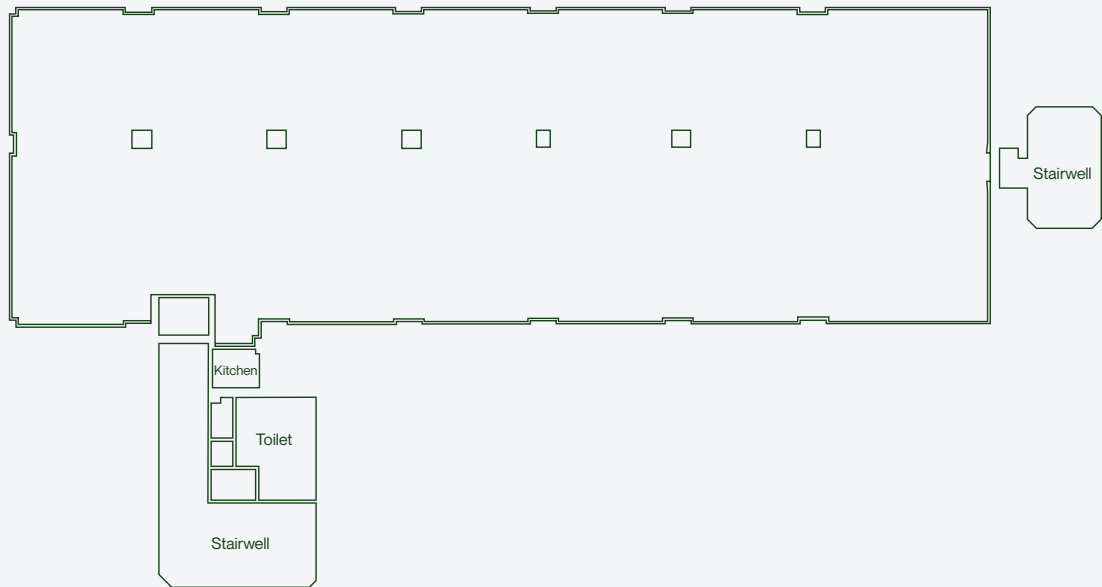
**Eighth Floor**  
5,080 SqFt



**Second Floor**  
Suite 1 - 1,249 SqFt  
Suite 2 - 530 SqFt  
Suite 3 - 530 SqFt



**First Floor**  
Suite 1 - 1,500 SqFt



 Available Spaces

# Ready to move ASAP? So are we!

For more information  
please contact:



General Enquiries  
T: 0161 989 3884  
E: [space@mcrproperty.com](mailto:space@mcrproperty.com)



General Enquiries  
T: 0161 850 1111  
E: [mb@mbre.space](mailto:mb@mbre.space)

**Disclaimer**

In accordance with the Misrepresentation Act 1967, the joint agents, acting on behalf of the vendors or lessors of this property, hereby notify that these particulars do not constitute part of any offer or contract. All statements regarding this property are made without responsibility and should not be relied upon as representations of fact. The agents do not provide any representations or warranties concerning the property. Any prospective purchasers or lessees are advised to verify the accuracy of each statement through inspection or other means.

