



**Brand New 26,807 SF**  
Medical/Office Building  
For Lease



**105 Doughty Boulevard, Inwood**

# Building Overview

**Availability:**

3rd floor: 7,157 RSF  
2nd floor: 7,853 RSF  
1st floor: 5,706 RSF  
Lower Level: 6,089 RSF

**Total: 26,807 RSF**

**Asking Rent:** Upon Request



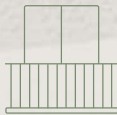
Built-to-suit for  
one or multiple  
users



2027 projected  
delivery



Building signage/  
naming rights  
available



Outdoor  
balconies/  
lounge areas



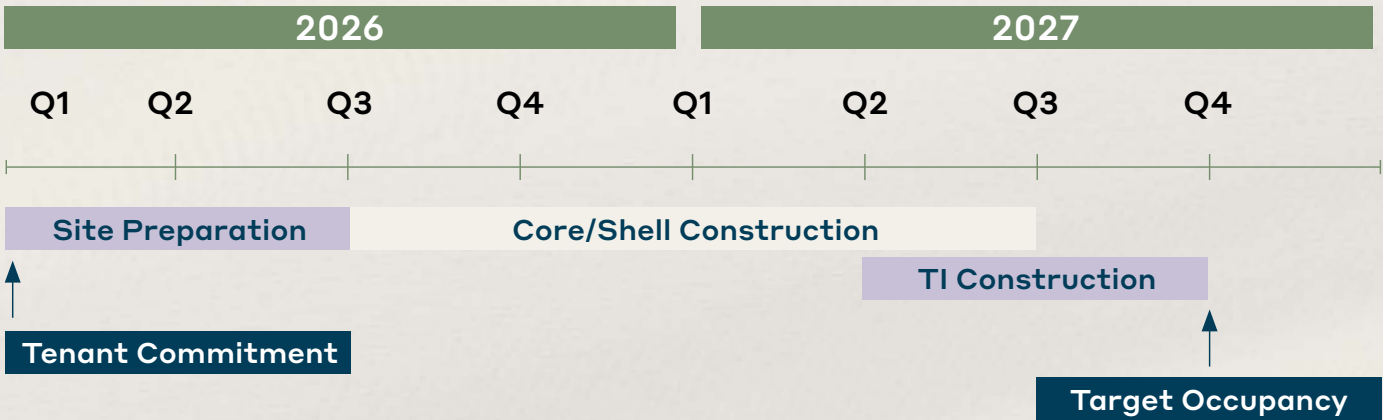
Densely  
populated area



Municipal  
parking across  
the street

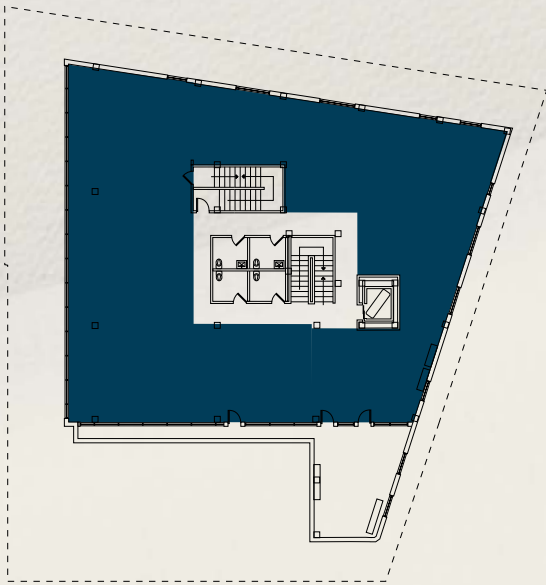


Walking  
distance to  
Inwood LIRR  
Station

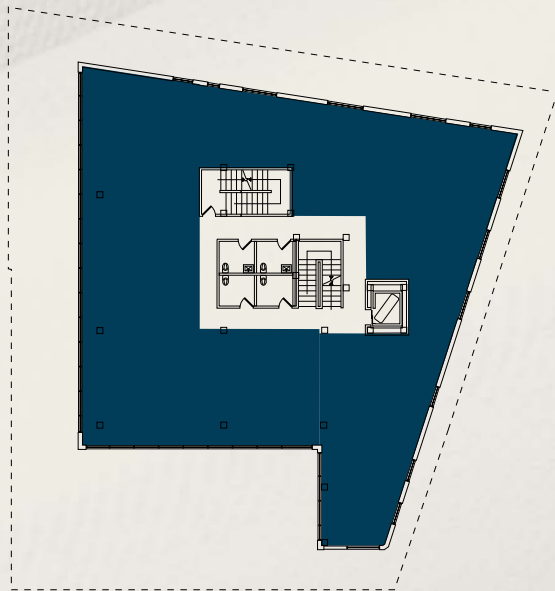


# Floor Plans

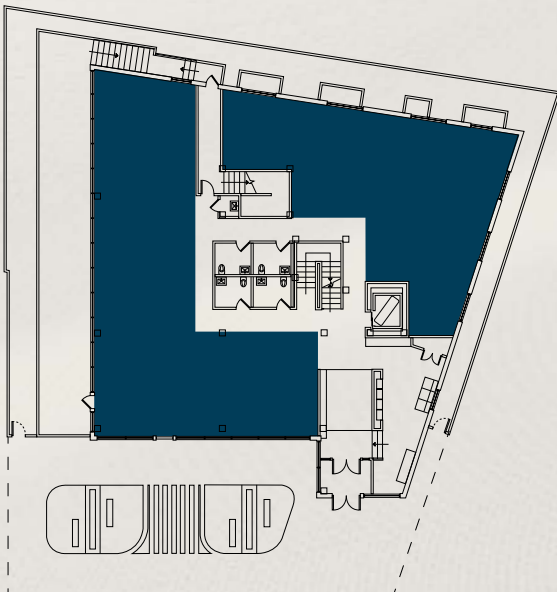
**Third Floor**  
7,157 RSF



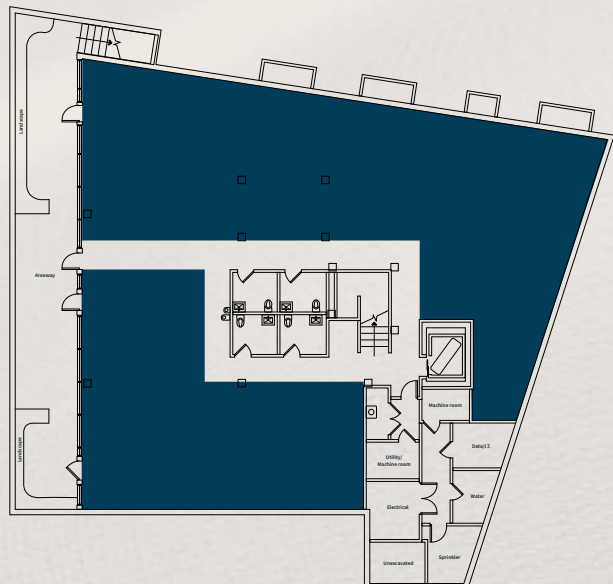
**Second Floor**  
7,853 RSF



**First Floor**  
5,706 RSF

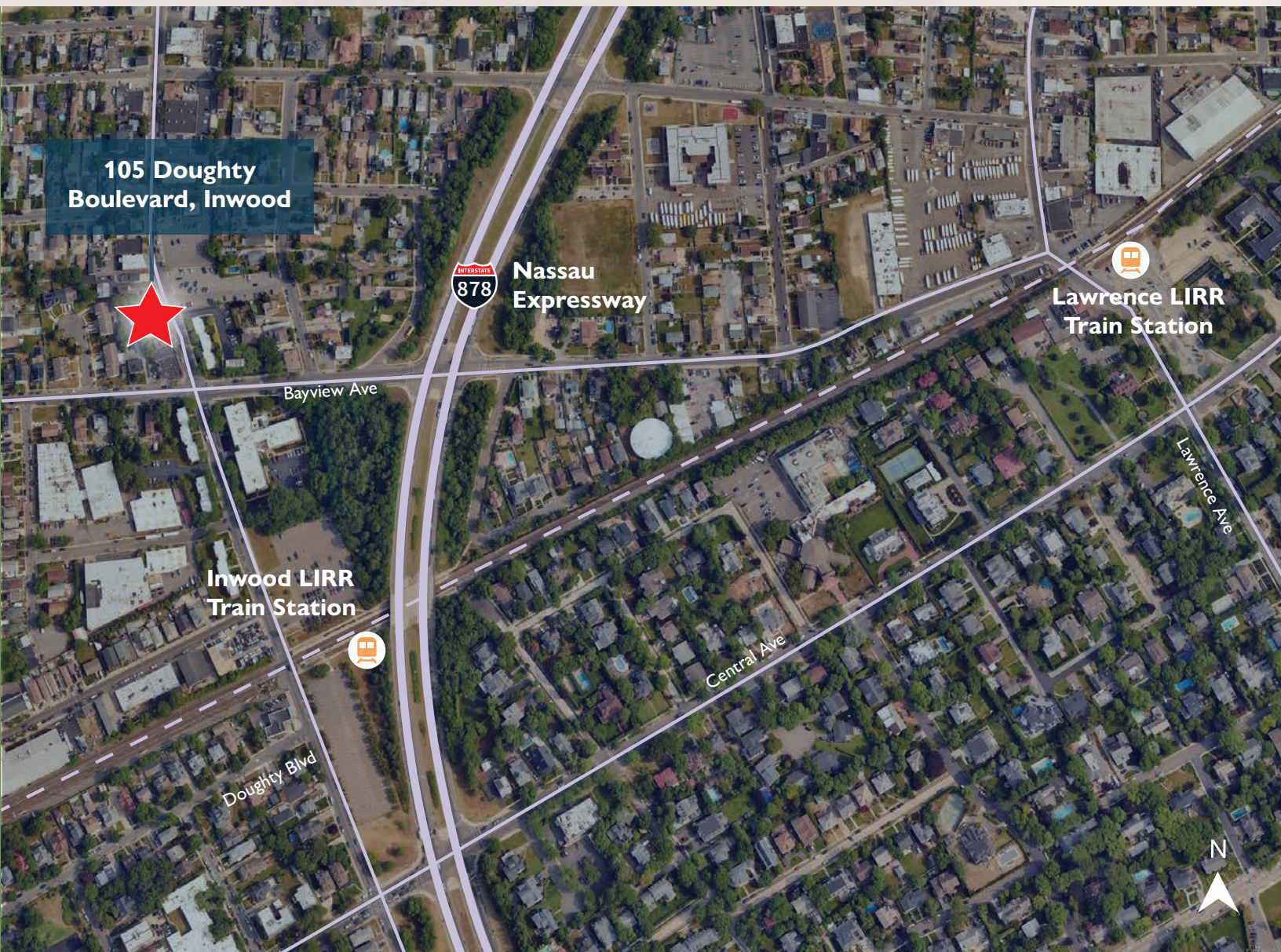


**Lower Level**  
6,089 RSF





# Location



## Exclusive Brokers

### Kyle Crennan

Managing Director  
kyle.crennan@jll.com  
+1 631 962 2896

### Joseph Lopresti

Executive Vice President  
joseph.lopresti@jll.com  
+1 631 962 7384



Although information has been obtained from sources deemed reliable, JLL does not make any guarantees, warranties or representations, express or implied, as to the completeness or accuracy as to the information contained herein. Any projections, opinions, assumptions or estimates used are for example only. There may be differences between projected and actual results, and those differences may be material. JLL does not accept any liability for any loss or damage suffered by any party resulting from reliance on this information. If the recipient of this information has signed a confidentiality agreement with JLL regarding this matter, this information is subject to the terms of that agreement. ©2025 Jones Lang LaSalle Brokerage, Inc. All rights reserved.