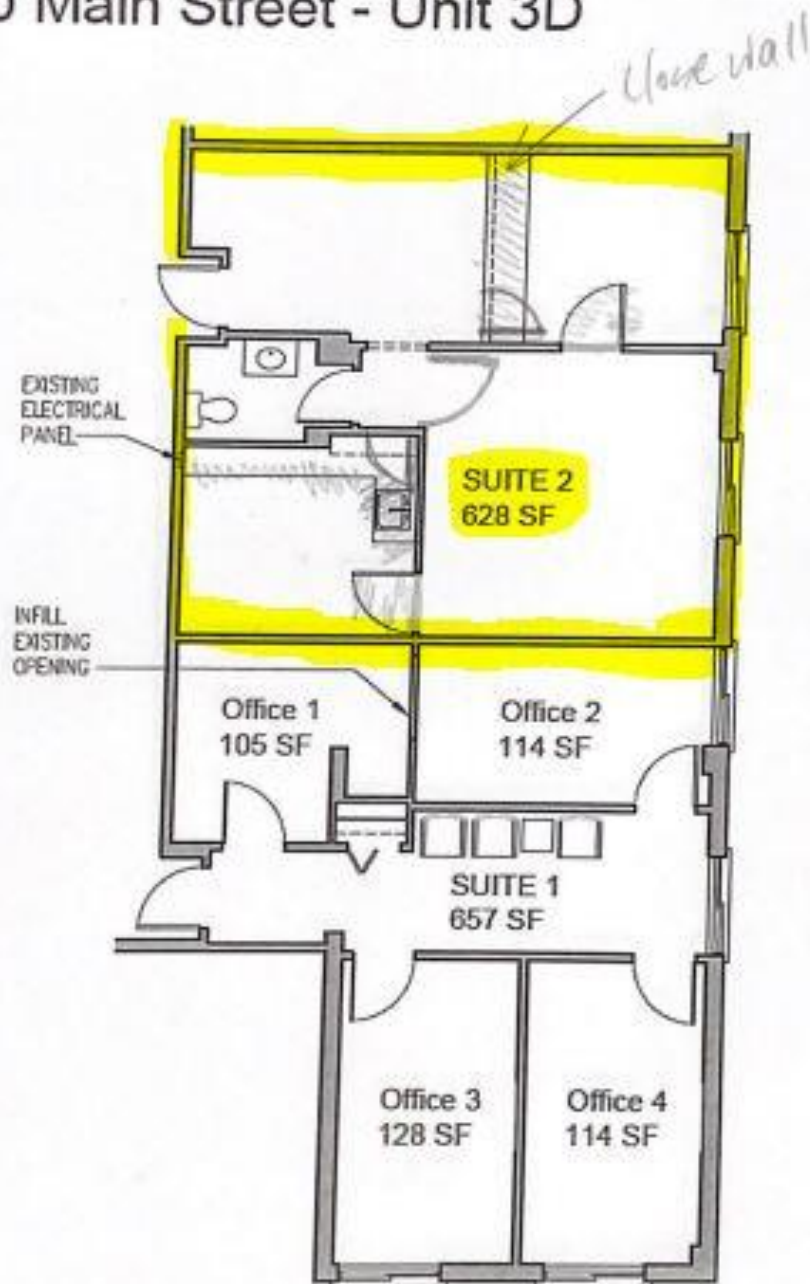


2900 Main Street - Unit 3D





OFFICE SPACE

2900 Main St
Stratford

FOR LEASE

Third Floor
628 SF – \$1,400/mo



GREAT LOCATION IN STRATFORD

- 628 SF office space available for rent in attractive office building with ample parking.
- Located on Main Street near the junction of Barnum Ave and Main Street.
- Ideal for therapists, attorneys, accountants, and consultants, this unit presents a prime location for any professional practice.
- Lease Price: 1,400/month Full Gross

Call Steve Hodson at 203-260-1369

The information above has been obtained from sources believed reliable. While we do not doubt its accuracy we have not verified it and make no guarantee, warranty or representation about it



Stephen J. Hodson/Hodson Realty, Inc.
6515 Main St., Trumbull, Ct. 06611
Ph: 203-268-7743
Cell: 203-260-1369
Steve@HodsonRealty.com
www.HodsonCommercial.com



Integrity. Quality. Experience. Service.