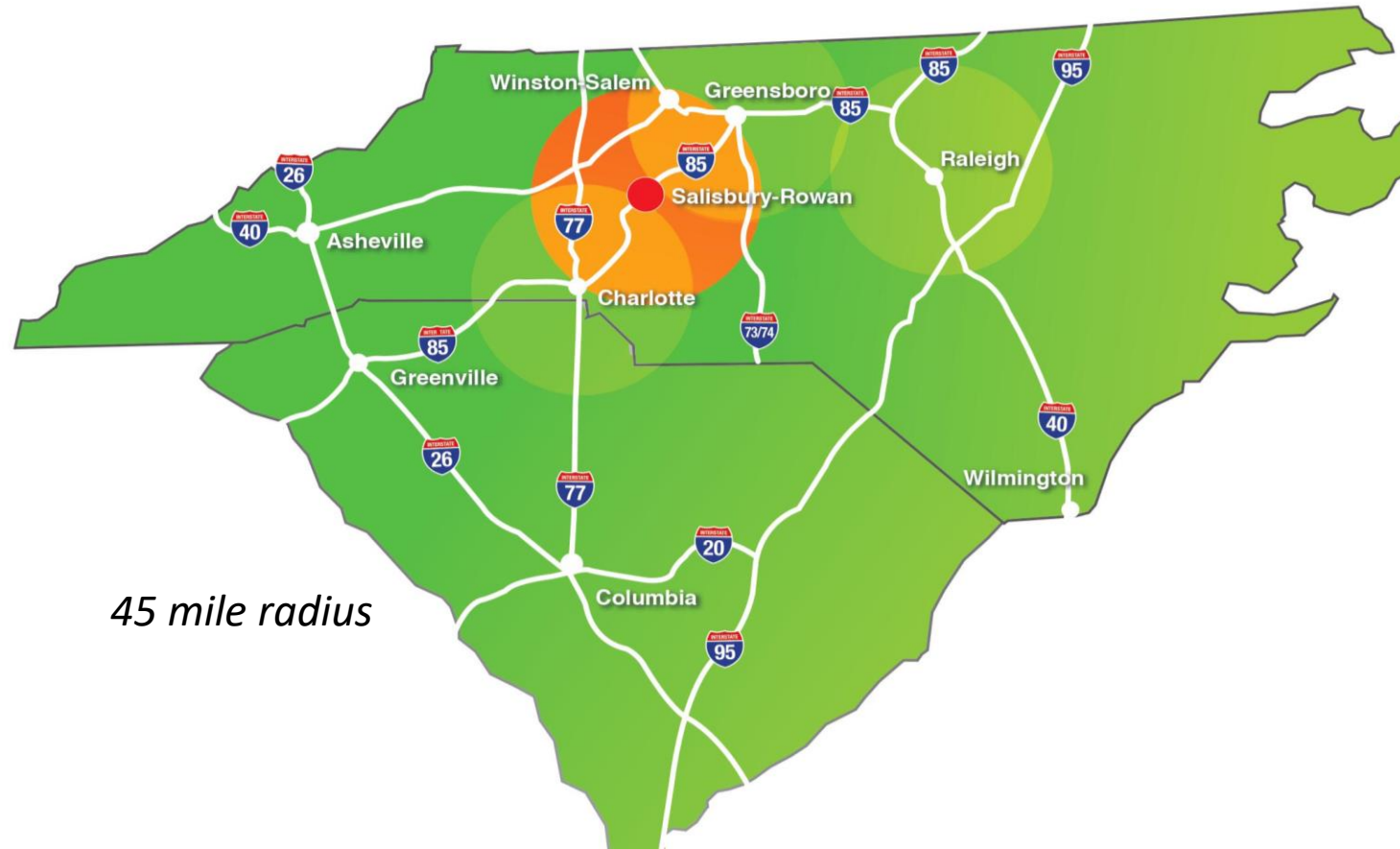


# Rowan County Workforce & Customized Training



*45 mile radius*

Over 3 million residents  
and a labor force of 1.6  
million

Covers three major  
metro areas. Larger  
than neighboring metro  
areas

Customized,  
Advanced Training:  
Degree,  
Diploma,  
Certificates,  
Apprenticeships

# Best State for Business

North Carolina is consistently ranked among the top states for business.

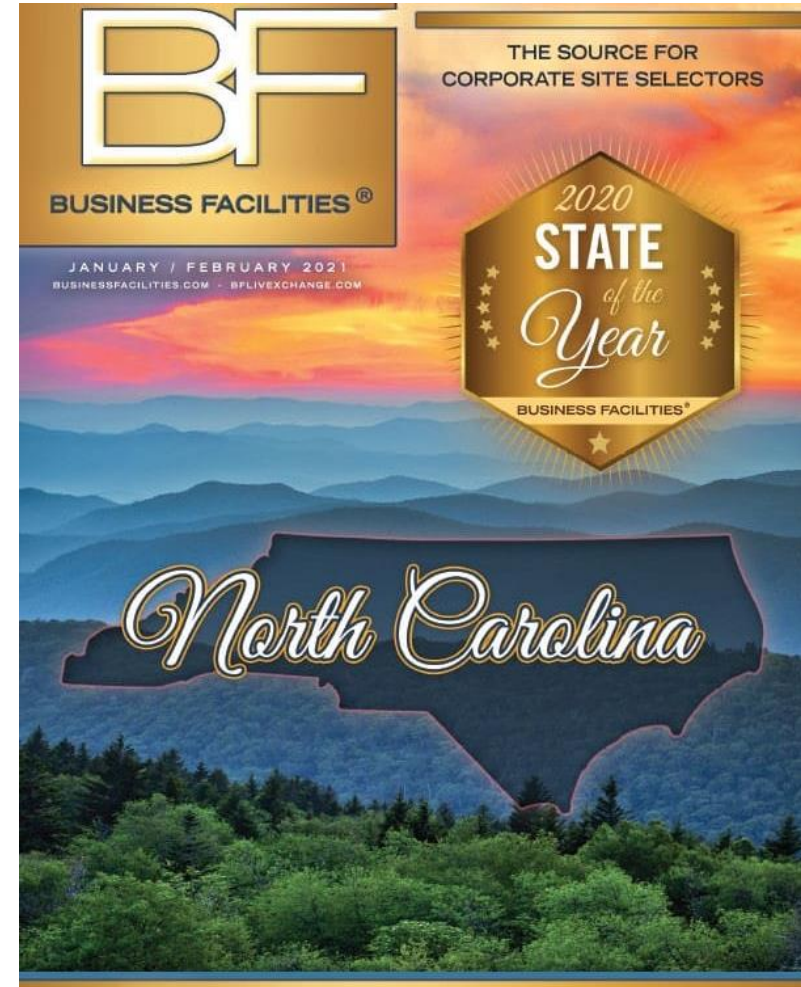
#1 – Business Climate Ranking, 2021 & 2022, Site Selection Magazine

#1 – Best States for Business, three consecutive years, Forbes

#1 – Regulatory Environment, 2019, Forbes

#1 – State of the Year, 2020, Business Facilities

Lowest corporate income tax rate in the nation (2.5%) – dropping to 0% in 2030



# Committed to building tomorrow's workforce today

Rowan County is committed to preparing workers with advanced skills in high-demand industries with talent from a regional workforce of 1.6 million

- Rowan Education Collaborative
- Rowan County Workforce Alliance
- Rowan County Talent Attraction program
- Better Jobs for Better Lives funding
- ACT Certified Work Ready Community
- Pursuing inclusive, economic opportunities



## ROWAN LEARNS

An Educational Collaborative

*Be an original learner.™*

**ROWANEDC**

PARTNERSHIP for ECONOMIC DEVELOPMENT  
SALISBURY, NC

*Be an original.*

# Technology and Innovation-Led Schools

[Rowan-Salisbury School System](#) (RSSS) is recognized nationally for its innovative approaches to teaching and learning

- Ranked in the 'Top 10' nationally for pioneering uses of technology in our classrooms for student success.
- Provides STEM curriculum from pre-K through grade 12 classrooms.
- The One to One program provides each student in grades K-12 with a personal iPad or laptop device.
- North Carolina's only state designated renewal district, giving it more flexibility and greater ability to provide extraordinary learning experiences for its students
- Operates 12 [Career Academies](#) including an Advanced Manufacturing Academy in local high schools.



# A Center of Higher Education

---

Rowan County is home to 4 colleges with over 20,000 students.

[Rowan-Cabarrus Community College](#) is one of the premier community colleges in the nation that offers 32 degrees, 30 diplomas and 142 certificates.

[Catawba College](#) is a private, liberal arts school offering 40 academic fields of study, including a strong science program, pre-professional programs, and graduate studies.

[Livingstone College](#) is a private, HCBU offering degree programs in Business, Education and Social Work, Liberal Arts and Mathematics and Science.

[Hood Theological Seminary](#) – Hood Theological Seminary is a graduate and professional school that provides theological preparation for effective ministry in a diverse society.



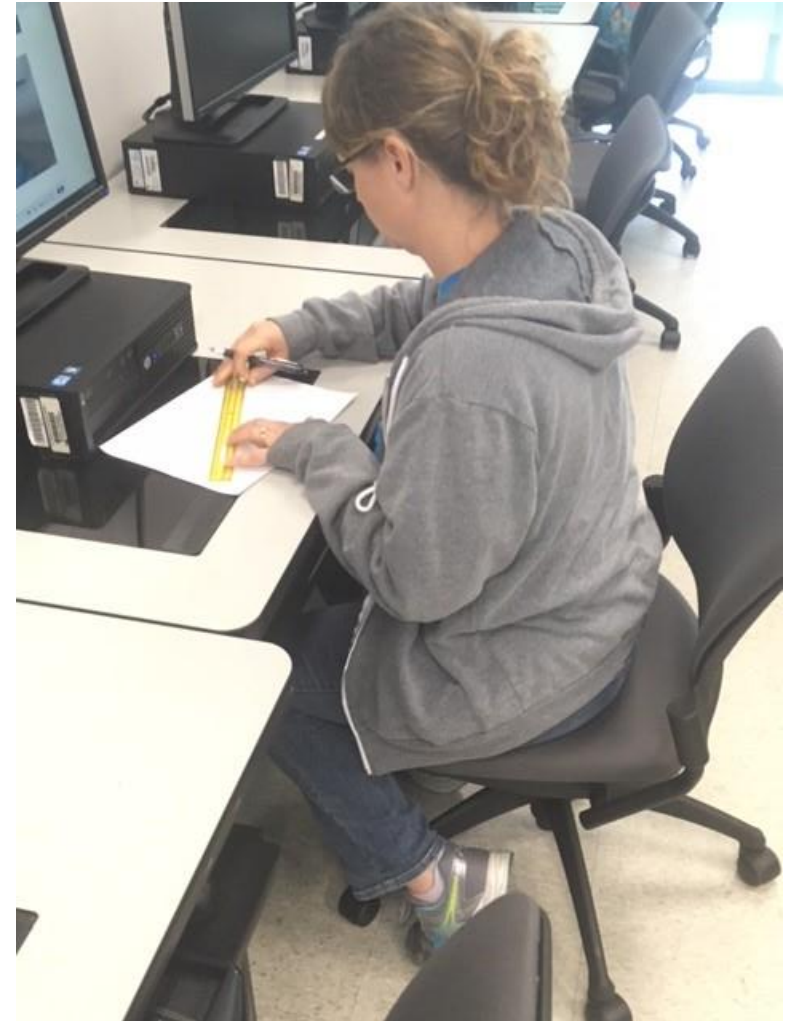
# Supportive Manufacturing Training Resources

The North Carolina Manufacturing Institute is exclusive to Rowan, Cabarrus and Iredell counties. It provides a free, eight-week course leading to the Certified Production Technician certificate.

The Advanced Technology Center at Rowan Cabarrus Community College (RCCC) houses state-of-the-art, adaptable labs and classrooms.

RCCC also developed a Certified Logistics Technician program to support Chewy in its fulfillment center hiring needs.

In 2020, voters passed a \$45 million bond proposal to expand RCCC programs in Rowan County.



# Rowan County Customized Training

Rowan County works with the State of North Carolina on creating **customized** training for companies that call Rowan County home.

- ***Localized* to the business**
- **Equipment training**
- **Pertinent Course Training**

The following slides reflect the type of training offered at Rowan –Cabarrus Community College.



# Rowan-Cabarrus Community College Committed to Workforce Excellence, Business Success, and Instructional Innovation

## **Certified Graduates from Accredited Programs**

- North Carolina Manufacturing Institute
- Mechatronics Apprenticeship Consortium
- Regional Plastics & Composites Group
- Pathways to Workforce Excellence:
  - 36 Degree Programs
  - 30 Diploma Programs
  - 131 Certificate Programs
  - Workforce Training Certification Programs
  - 46,600 Trainees in 2021-2022





# Advanced Technology Center Programs

- Mechanical Engineering Technology
- Electrical Engineering Technology
- Industrial Engineering Technology
- Associate in Engineering
- Industrial Maintenance Technician Apprenticeship
- North Carolina Manufacturing Institute
- Plastic Injection Molding Program
- Certified Automation Technician
- Cyber-Physical Security for Industry 4.0
- Instrumentation and Calibration Certification
- Machine Vision
- Industry 4.0
- Additive Manufacturing
- Okuma Machine Tool Academy
- Continuous Process Improvement
- Logistics and Supply Chain Management





## Training One Company at a Time

- Customized Training Grants 2021
- 25 projects under management
- Focus on Business Solutions by Upskilling Current Employees
- Recent Topics :
  - FDA Good Manufacturing Process
  - Root Cause Analysis
  - Project Management
  - ISO 22716
  - TS 16949
  - Six Sigma Black Belt
  - Front Line Supervisions Boot Camp
  - Advanced Electric Components
  - Geometric Dimensioning and Tolerancing
  - Gibbs CAM
  - US 312 Programming
  - Studio 5000
  - RS Logix
  - Precision Measurement Certification

# Committed to Business Success

## ***Supporting Business Growth and Profitability:***

- Customized Training Program Administration
- RSSO Programs
  - Recruitment
  - Screening
  - Selection
  - Onboarding
- On-Site Course Delivery
- Continuous Improvement Projects
- 260 Corporate Customers 2021-22

DAIMLER  
DAIMLER TRUCKS NORTH AMERICA

legrand®  
Pass & Seymour

Agility  
fuel systems™

DNP  
Photo Imaging



americhem.

CORNING

A Family Commitment to Quality Since 1920®

MAUSER  
Excellence in Industrial Packaging Solutions

niagara  
EST. 1983  
BOTTLING, LLC



NGK

TRELLEBORG

WILBERT  
plastic services

earthkind®  
preserve the good, prevent the rest

# Committed to Instructional Innovation



## *State and National Awards for Instructional Innovation*

- Most Innovative Digital Community College—Center for Digital Education—2016, 2017, 2018, 2019
- Digital Learning Innovation Award—Online Learning Consortium—2017
- Bellwether Award Finalist—2018
- Governor’s Award of Distinction—NCWorks
- Model Program Award—Manufacturing Skills Standards Council—2017
- NC Community College President of the Year--2019





The Best Industrial Property in Rowan County - 145 Acres

# The Best Industrial Property in Rowan County - 145 Acres

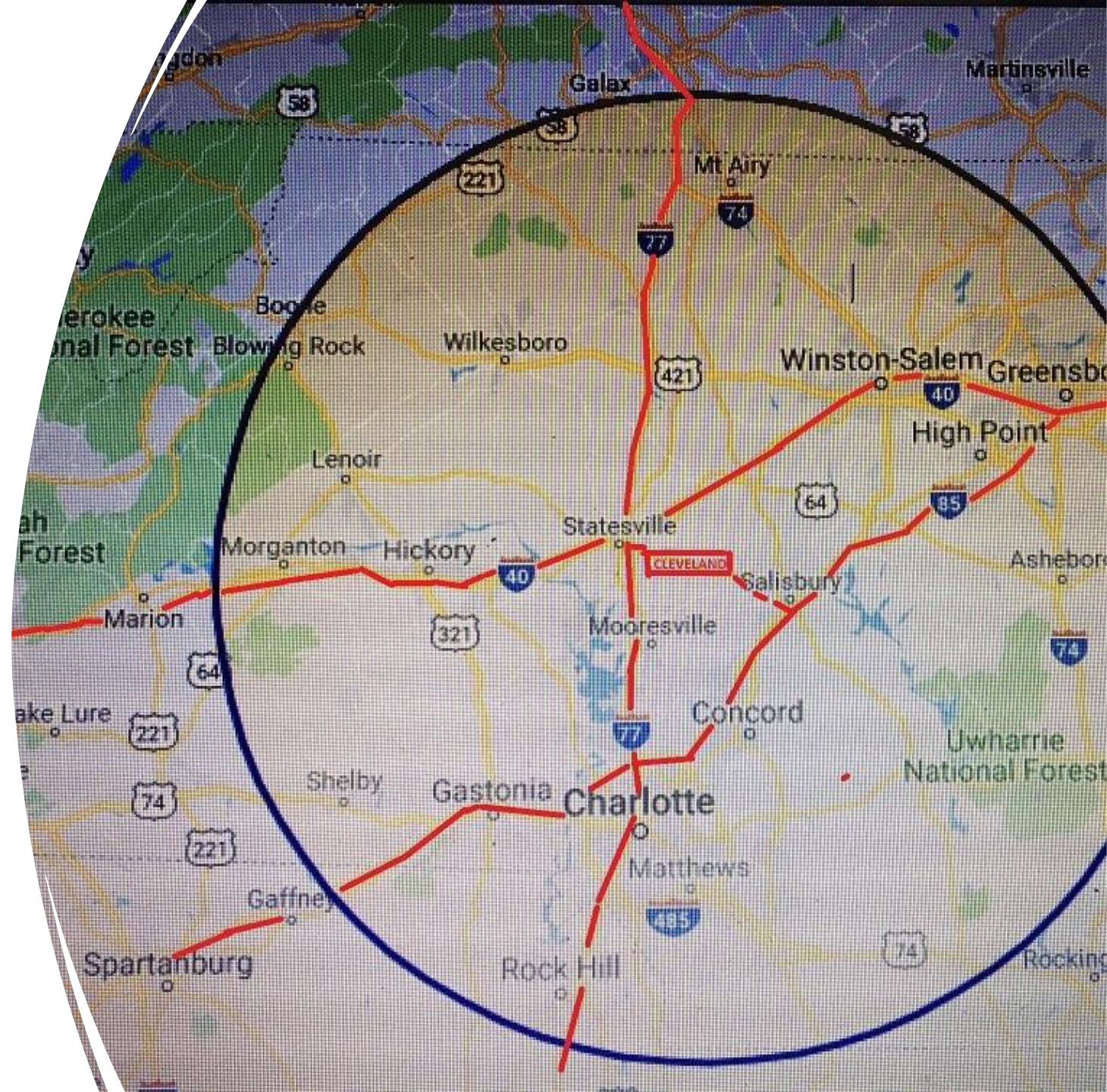
- Complete Duke Energy Site Readiness Program Site on the 115 acre Brown property.
- Adjacent to US 70- Zoned Light Industrial
- Approximately 1200 ft of road frontage on US Highway 70 and over 3200 ft of road frontage on Amity Hill Road
- Located +/- 15 minutes from Interstate 85, Interstate 77, and Interstate 40
- Located +/- 15 minutes from Interstate 85, Interstate 77, and Interstate 40
- Multiple due diligence reports available on majority of site acreage
- Water and Sewer Access on Property
- Low City and County Taxes
- **Will Divide**



Strategic Location:  
The Town of Cleveland is  
located on US Highway 70

---

- The Town of Cleveland is the only Town in NC within 10 miles of three major Interstates: I-40, I-77 and I-85
- Access to Two Regional Airports and Two International Airports
- 3.5 Million people live within a 50-mile radius of the Town of Cleveland



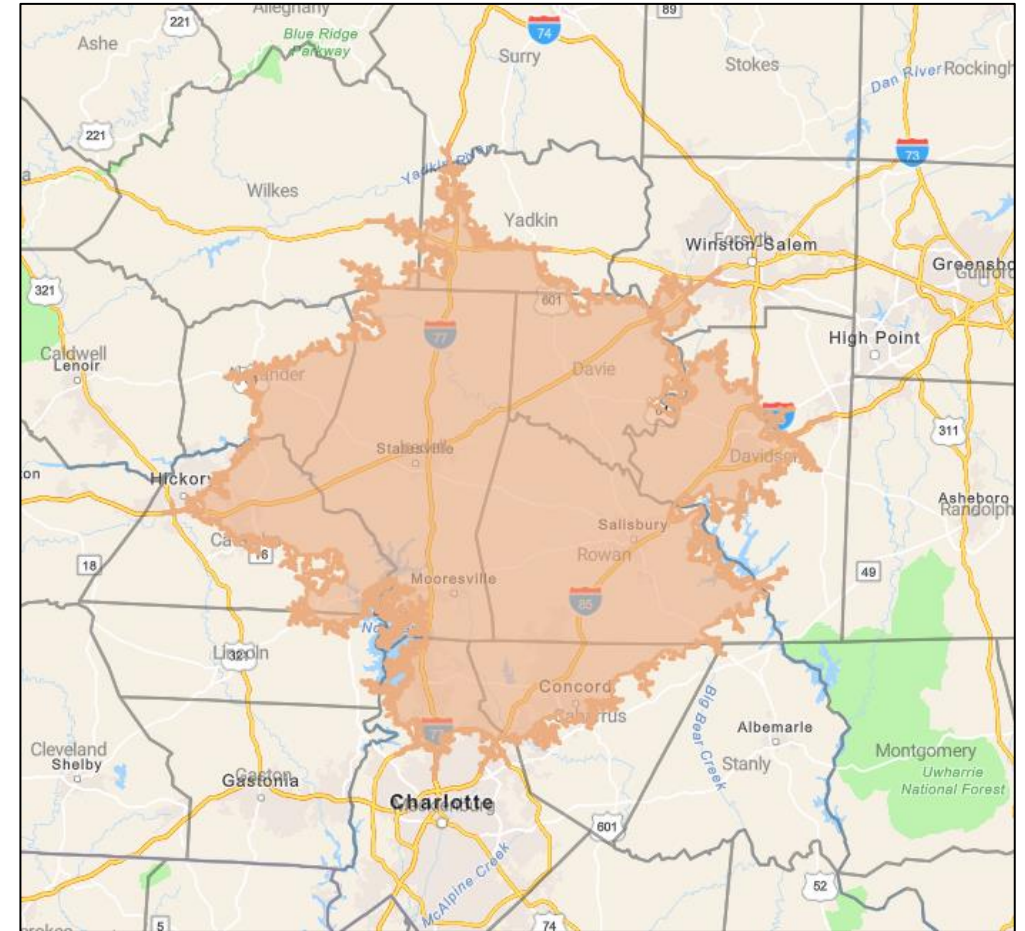
# 45-minute drive time statistics

## General Population

- 2.6 million population
- 89.3% of adults are high school graduates
- Over 967,000 persons with some post-secondary education

## Labor Pool

- 1.6 million person labor pool
- 930,105 between ages 25-54
- 136,959 currently employed in the manufacturing sector
- 91,205 currently employed in professional, scientific, and technical services





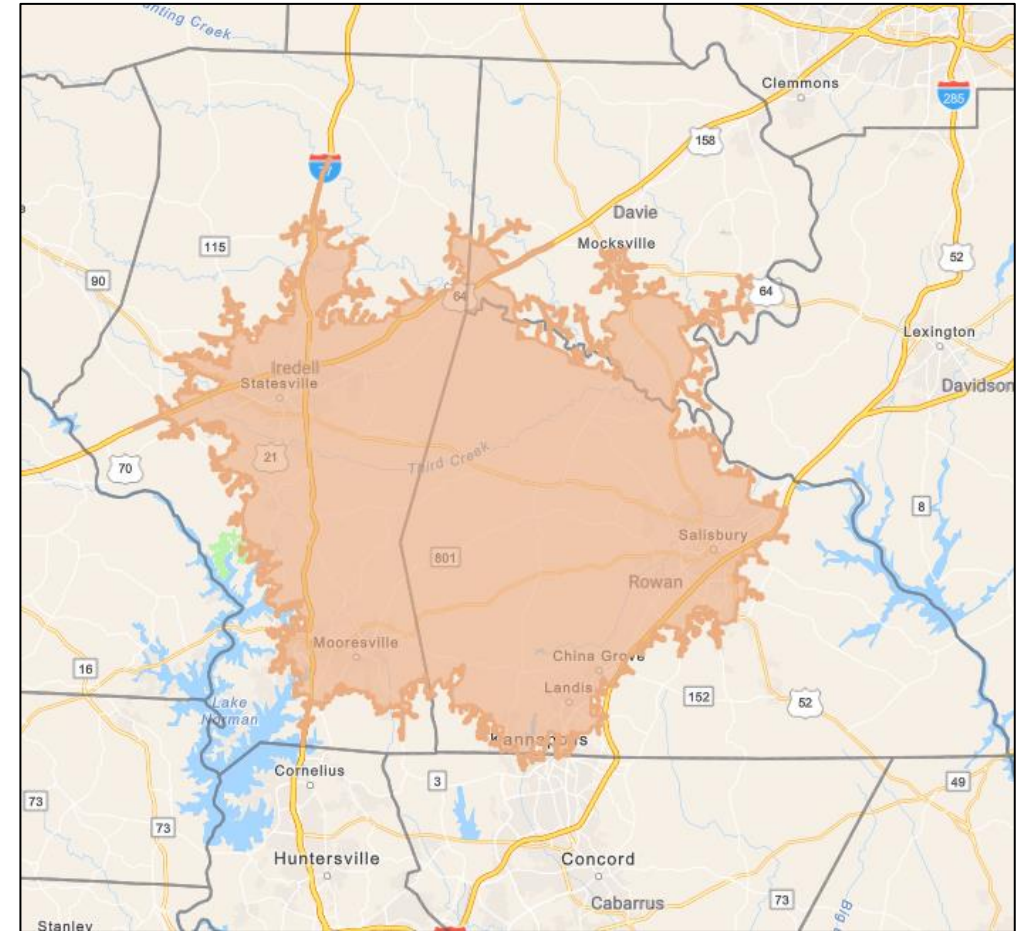
# 30-minute drive time statistics

## General Population

- 1.6 million population
- 90.5% of adults are high school graduates
- Approximately 642,982 persons with some post-secondary education

## Labor Pool

- 886,558 person labor pool
- 604,804 between ages 25-54
- 63,185 currently employed in the manufacturing sector
- 74,883 currently employed in professional, scientific, and technical services



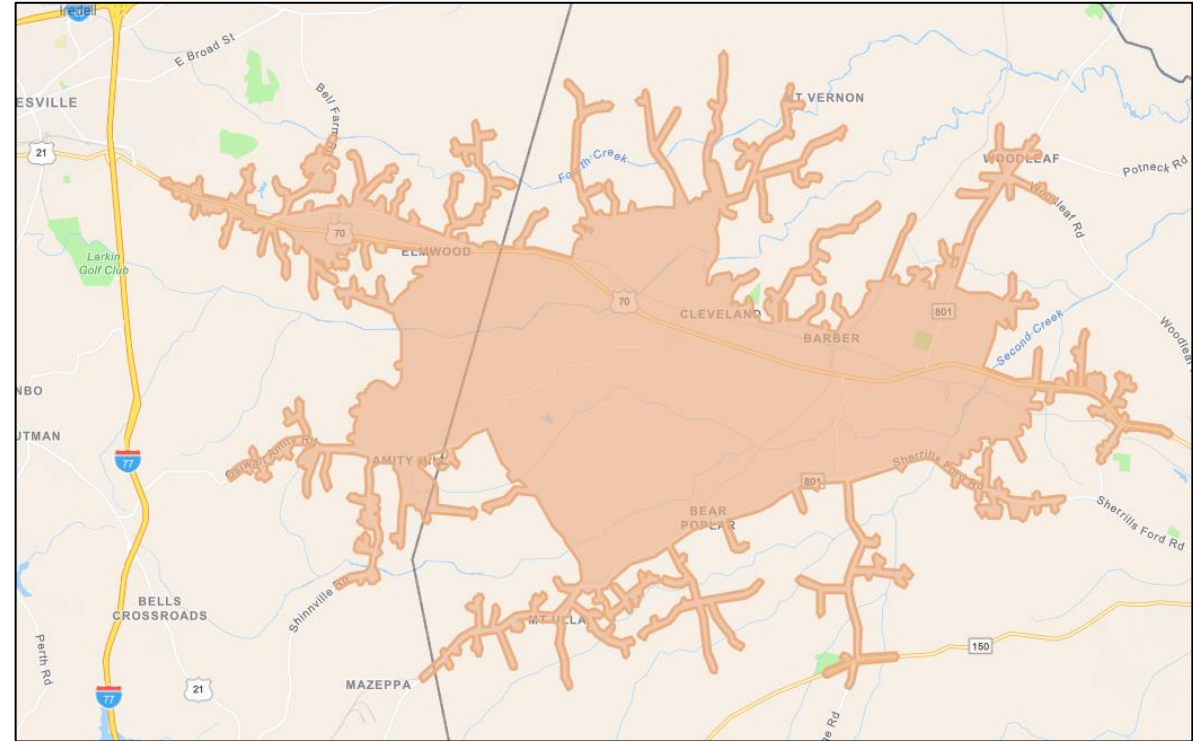
# 15-minute drive time statistics

## General Population

- 315,834 population
- 89.1% of adults are high school graduates
- Approximately 101,000 persons with some post-secondary education

## Labor Pool

- 157,940 person labor pool
- 100,593 between ages 25-54
- 18,341 currently employed in the manufacturing sector
- 4,701 currently employed in professional, scientific, and technical services



# Thank You

---

We look forward to sharing more with you specific to localized training offerings in West Rowan and the Town of Cleveland.

A Better Balance



Location & Transportation



A Welcoming Community

