

LAND FOR SALE



BARDIN ROAD LIGHT INDUSTRIAL DEVELOPMENT SITE



JONATHAN TOOLEY

806.346.1276

JONATHAN@HAMILTONCOMMERCIAL.COM

SWC OF BARDIN ROAD AND MATTHEW ROAD - GRAND PRAIRIE, TEXAS

12.92 ACRES - LIGHT INDUSTRIAL

Property Summary

Summary

LAND: 12.92 ACRES

ZONING: PD-30

UTILITIES: WATER, SEWER, ELECTRIC, GAS, DATA

Overview

- ENTITLED FOR LIGHT INDUSTRIAL USES
- LOCATED ADJACENT TO I-20/SH-360/SH-161
- 51,690 SF WAREHOUSE BUILDING
- READY FOR CONSTRUCTION - PERMITTED!
- CALL OR EMAIL TO INQUIRE MORE INFORMATION



JONATHAN TOOLEY

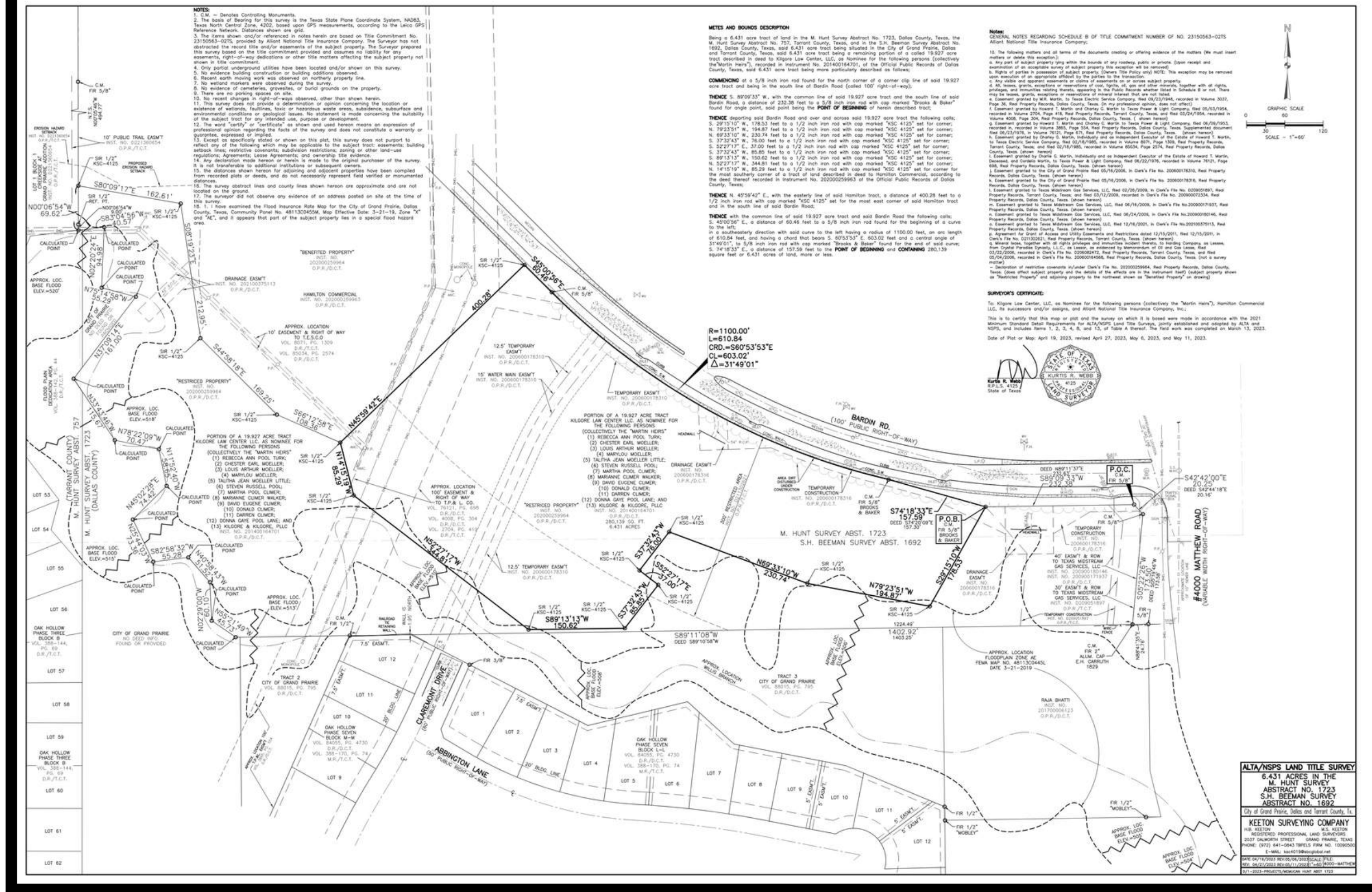
806.346.1276

JONATHAN@HAMILTONCOMMERCIAL.COM

SWC OF BARDIN ROAD AND MATTHEW ROAD - GRAND PRAIRIE, TEXAS

12.92 ACRES - LIGHT INDUSTRIAL

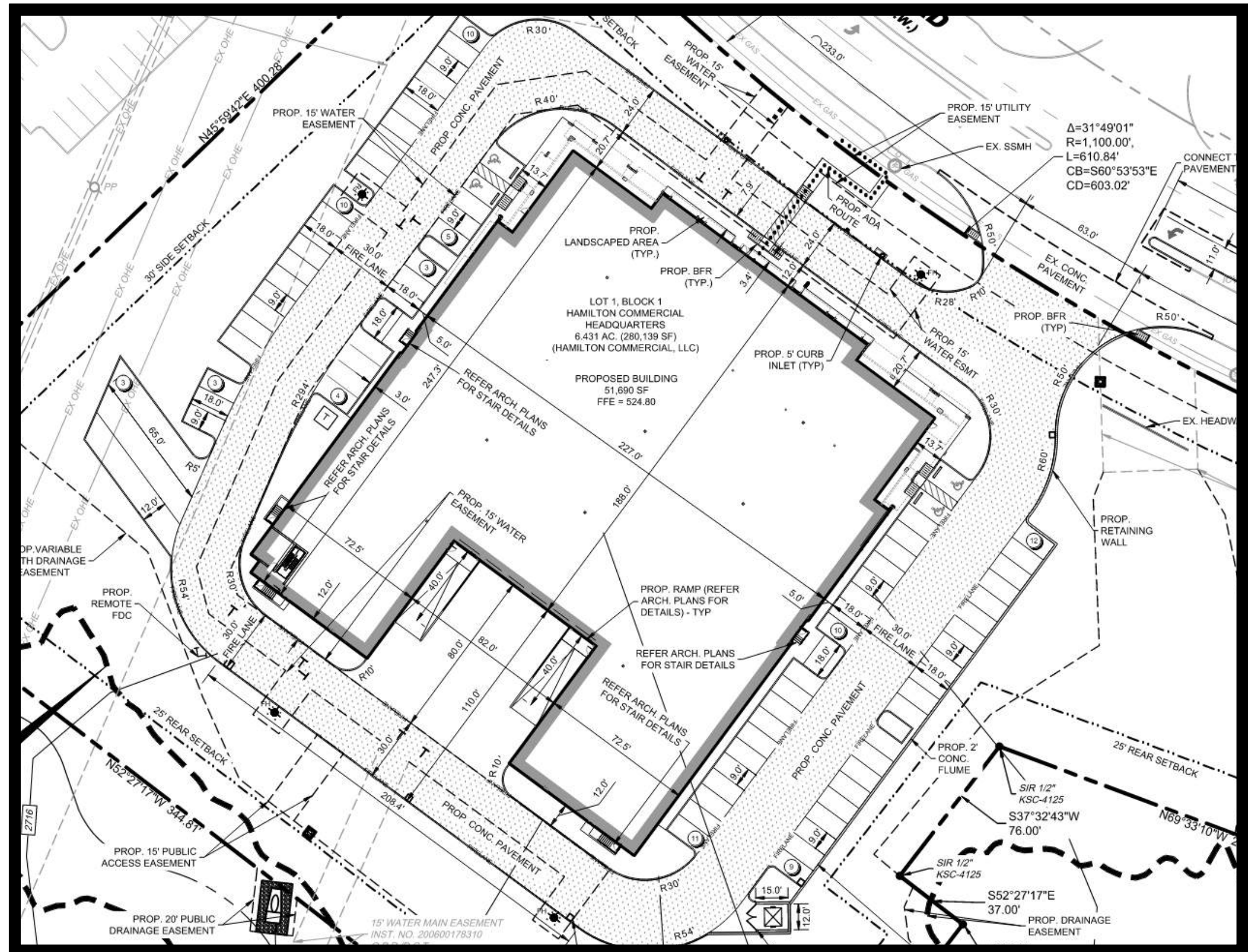
Survey



JONATHAN TOOLEY
806.346.1276
JONATHAN@HAMILTONCOMMERCIAL.COM

SWC OF BARDIN ROAD AND MATTHEW ROAD - GRAND PRAIRIE, TEXAS 12.92 ACRES - LIGHT INDUSTRIAL

Site Plan



JONATHAN TOOLEY

806.346.1276

JONATHAN@HAMILTONCOMMERCIAL.COM

SWC OF BARDIN ROAD AND MATTHEW ROAD - GRAND PRAIRIE, TEXAS

12.92 ACRES - LIGHT INDUSTRIAL

Renderings



JONATHAN TOOLEY

806.346.1276

JONATHAN@HAMILTONCOMMERCIAL.COM

SWC OF BARDIN ROAD AND MATTHEW ROAD - GRAND PRAIRIE, TEXAS

12.92 ACRES - LIGHT INDUSTRIAL

Demographics

	1 MILE	3 MILE	5 MILE
TOTAL POPULATION - 2024	13,534	109,226	266,636
DAYTIME POPULATION	9,531	81,923	210,956
AVERAGE HOUSHOLD INCOME	\$108,674	\$106,226	\$94,521

TRAFFIC COUNTS: 11,352 VPD



JONATHAN TOOLEY
806.346.1276
JONATHAN@HAMILTONCOMMERCIAL.COM

SWC OF BARDIN ROAD AND MATTHEW ROAD - GRAND PRAIRIE, TEXAS
12.92 ACRES - LIGHT INDUSTRIAL



HAMILTON
COMMERCIAL

FOR MORE INFORMATION:

THE INFORMATION CONTAINED IN THIS DOCUMENT WAS SUPPLIED BY SOURCES DEEMED RELIABLE BUT THERE ARE NO GUARENTEES OR WARRANTIES DUE TO ANY INACCURACIES. THIS DOCUMENT MAYBE SUBJECT TO ERRORS, OMISSIONS, PRICES CHANGES, OR TAKEN OFF THE MARKET.

JONATHAN TOOLEY

DIRECTOR - LAND DEVELOPMENT

806.346.1276

JONATHAN@HAMILTONCOMMERCIAL.COM