

2515 UNION LAKE ROAD
COMMERCE TWP., MICHIGAN

RETAIL FOR SALE
3,299 Square Feet Available



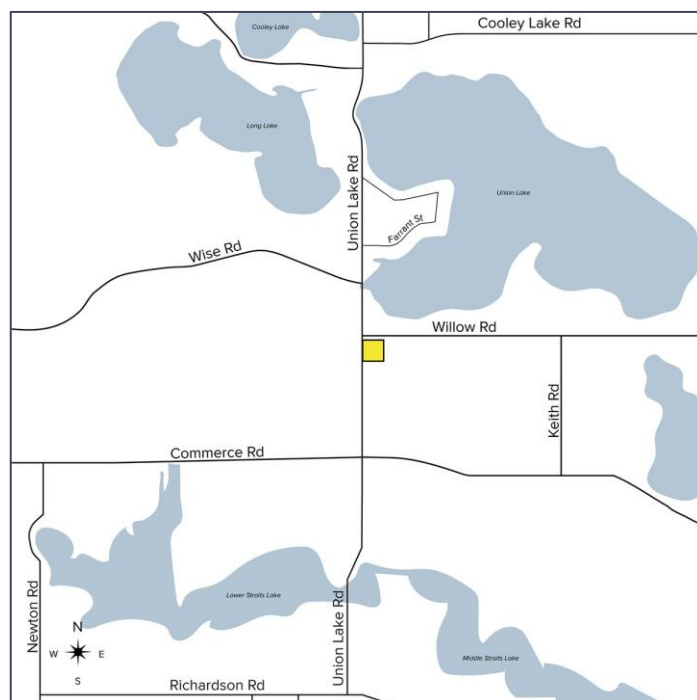
**SIGNATURE
ASSOCIATES**
KNOW SIGNATURE | KNOW RESULTS

RARE OPPORTUNITY



PROPERTY FEATURES

- 3,299 square feet available
- Well-located building available for sale on high-traffic Union Lake Road
- Excellent visibility and signage along major corridor
- Ideal for owner-users or investors, including retailers, medical, coffee, florist, food service, specialty, or neighborhood service uses
- Strong surrounding demographics and national retailers
- Sale Price: \$475,000 (\$143.98/sq. ft.)



For more information, please contact:

MARVIN PETROUS
(248) 359 0647

mpetrous@signatureassociates.com

ANATOLA SESI
(248) 359 0629

asesi@signatureassociates.com

SIGNATURE ASSOCIATES
One Towne Square, Suite 1200
Southfield, MI 48076
www.signatureassociates.com

2515 Union Lake Road – Commerce Twp., Michigan

Retail For Sale

3,299
Square Feet
AVAILABLE



DEMOGRAPHICS

	POPULATION	MED. HH INCOME
1 MILE	5,929	\$141,545
3 MILE	51,040	\$122,049
5 MILE	134,912	\$112,090

TRAFFIC COUNTS (TWO-WAY)

32,365	Union Lake Rd. S of Willow Rd.
31,624	Union Lake Rd. N of Willow Rd.
8,473	Willow Rd. E of Union Lake Rd.
12,446	Commerce Rd. & Union Lake Rd.



For more information, please contact:

MARVIN PETROUS
(248) 359 0647

mpetrous@signatureassociates.com

ANATOLA SESI
(248) 359 0629

asesi@signatureassociates.com

SIGNATURE ASSOCIATES
One Towne Square, Suite 1200
Southfield, MI 48076
www.signatureassociates.com