

FOR SALE

±3,000 SFT MEDICAL BUILDING FOR SALE



COMMERCIAL REAL ESTATE SERVICES
PASADENA

Scan for Virtual
Walk-Through
(Mobile Friendly)



222 E Route 66 Glendora, CA 91740



CHRIS JOHNSON
Senior Vice President
chris.johnson@lee-associates.com
626.240.2786
License ID 01934154

OFFERING INFORMATION

+ Asking Price:	\$1,587,000
+ Price Per SF:	\$529
+ Total Building SF:	±3,000 SF
+ Lot Size:	±9,885 SF
+ Year Built:	1955
+ Parking Ratio:	4:1000
+ Zoning:	GDC_RT66SP
+ APN:	8644-004-026

PROPERTY HIGHLIGHTS

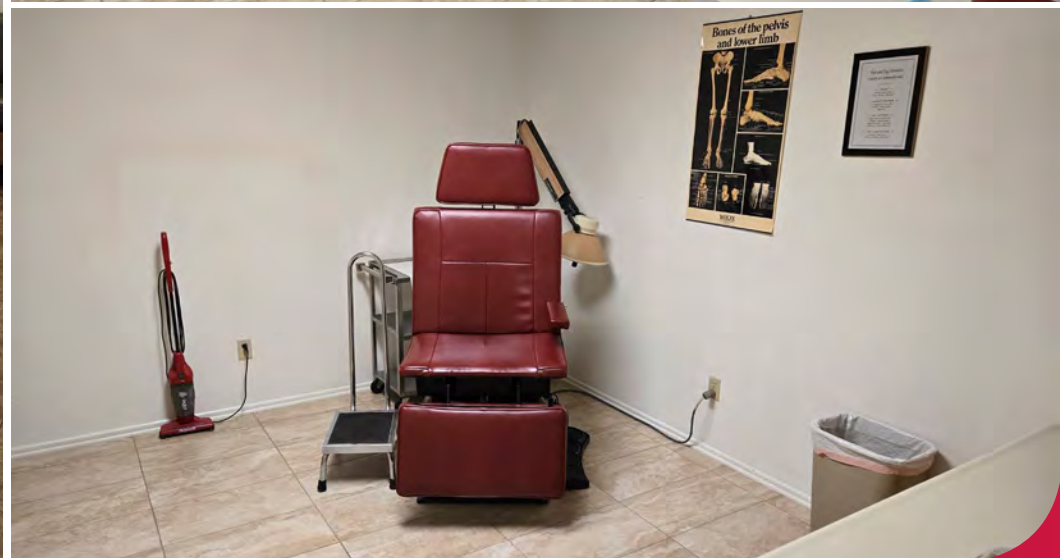
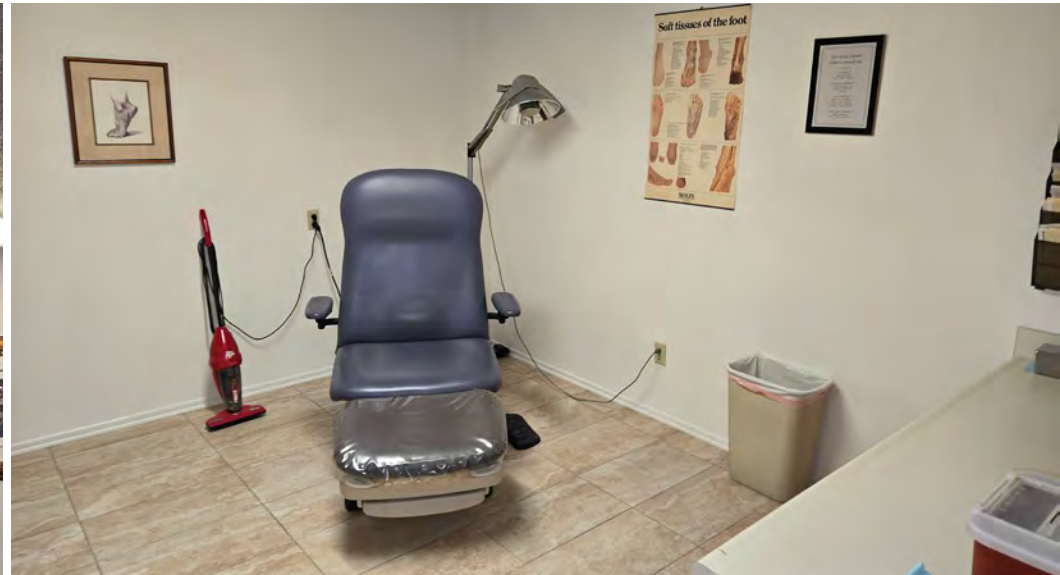
- + Functional medical layout
- + Well maintained building
- + Current active medical office
- + One covered parking space



FOR SALE
±3,000 SF MEDICAL BUILDING FOR SALE

222
E ROUTE 66
GLEN DORA, CA 91740

INTERIOR PHOTOS



FOR SALE
±3,000 SF MEDICAL BUILDING FOR SALE

222
E ROUTE 66
GLEN DORA, CA 91740

INTERIOR PHOTOS

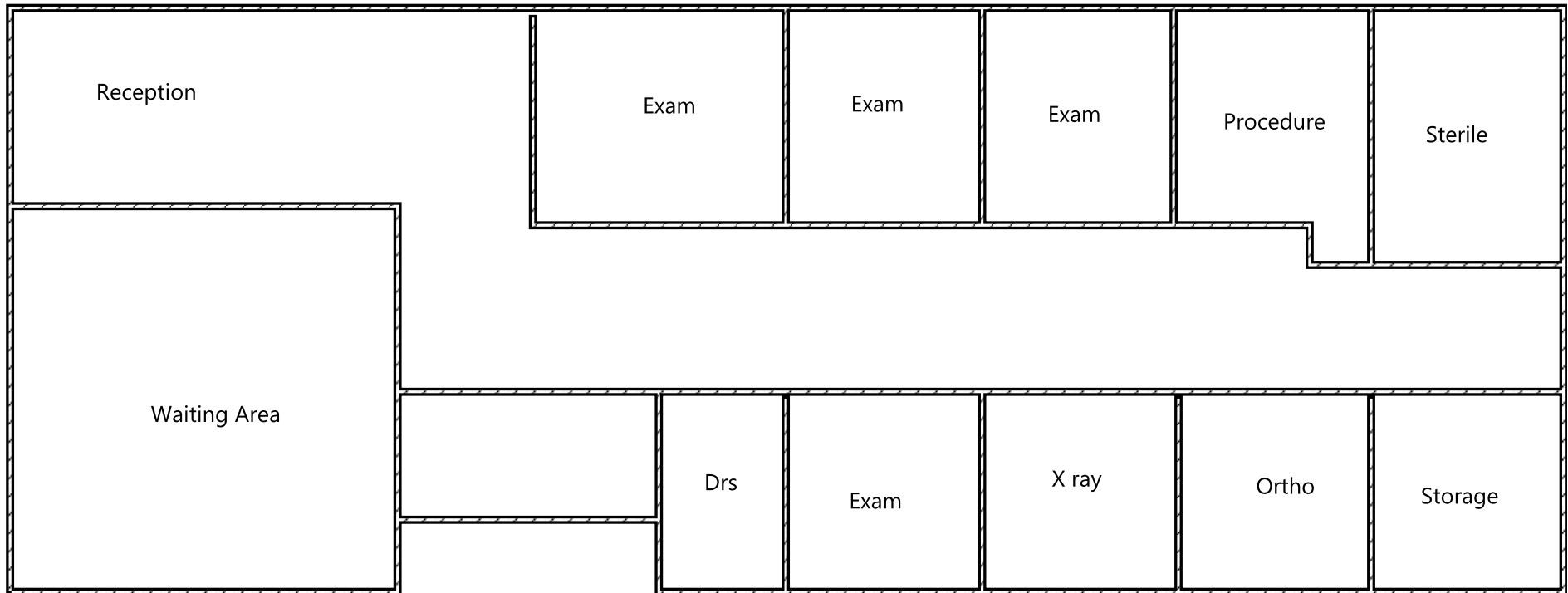


FOR SALE
±3,000 SF MEDICAL BUILDING FOR SALE

222
E ROUTE 66
GLEN DORA, CA 91740

FLOOR PLAN

Scan for Virtual
Walk-Through
(Mobile Friendly)



FOR SALE
±3,000 SF MEDICAL BUILDING FOR SALE

222
E ROUTE 66
GLEN DORA, CA 91740

LOCATION HIGHLIGHTS

- + Route 66 Frontage
- + Near Emenante and Glendora Community Hospitals
- + High Traffic Location
- + Easy access to 210 freeway

