



4787
CLARK HOWELL HWY

CLARK HOWELL COMMERCE CENTER

4787 CLARK HOWELL HIGHWAY, ATLANTA, GA 30349

LISTED WITH:



CONTACT:

RICK TUMLIN, CCIM, SIOR
rtumlin@lee-associates.com
404.442.2816

MICHAEL SUTTER, SIOR
msutter@lee-associates.com
404.442.2804

OWNED & MANAGED BY:



LEE & ASSOCIATES - ATLANTA | 404.442.2810 | 3500 LENOX ROAD, SUITE 1600, ATLANTA, GA 30326 | WWW.LEE-ASSOCIATES.COM/ATLANTA

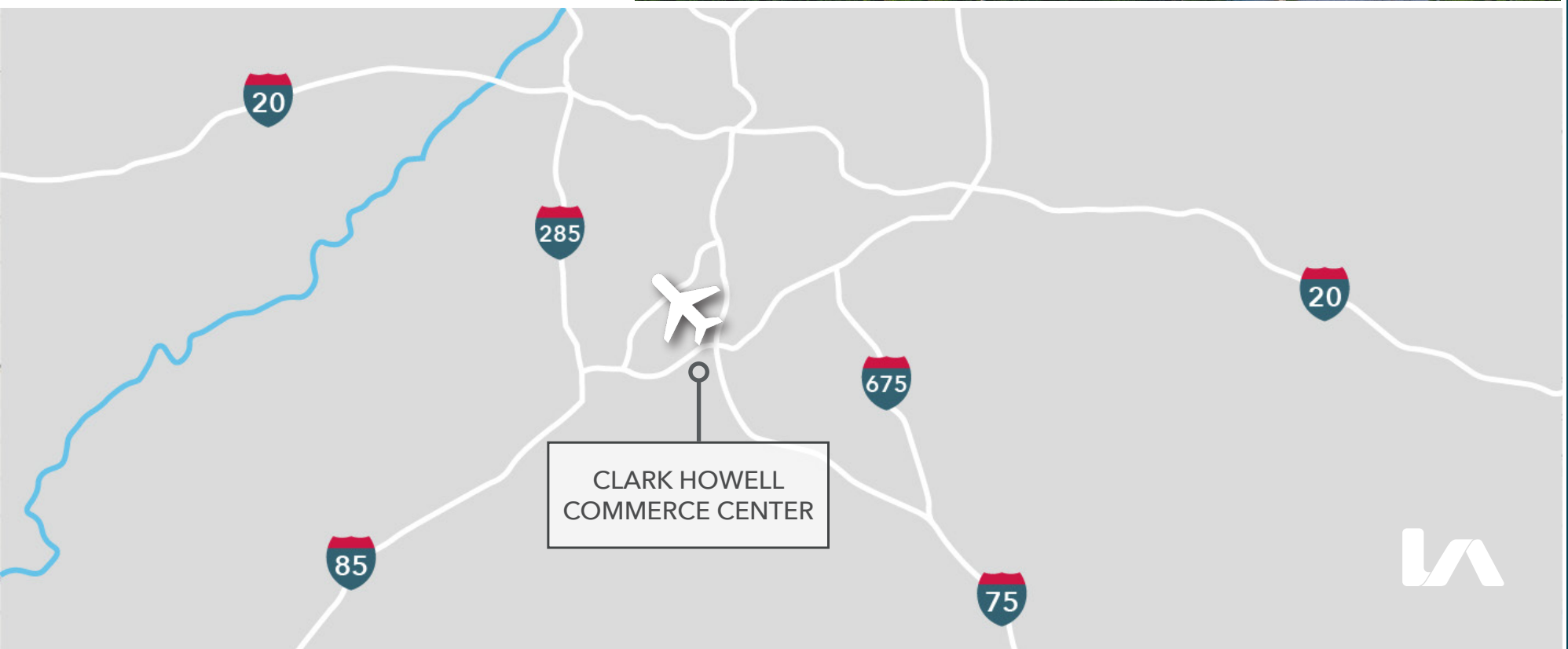
All information regarding property for sale, rental or financing is from sources deemed reliable, but no warranty or representation is made to the accuracy thereof and same is submitted to errors, omissions, change of price, rental or other conditions prior to sale, lease or financing or withdrawal without notice. No liability of any kind is to be imposed on the broker herein.

PROPERTY OVERVIEW

- Suite 4: 2,474 SF
- Suite 5: 2,475 SF
- Suite 6: 2,475 SF
- Suite 8: 2,473 SF
- 15' minimum clear height
- Grade level loading (12' x 12') doors
- 90' - 100' building depths
- Warehouse LED lighting
- Built in 1979
- 1.6 miles to Hartsfield-Jackson Atlanta International Airport
- 0.6 miles to I-285



**Total Contiguous SF:
7,424 SF**

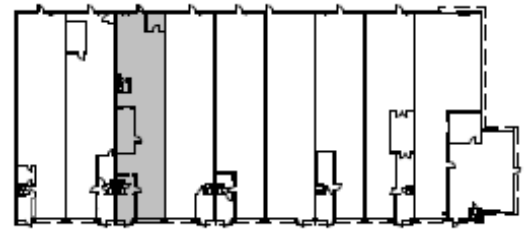
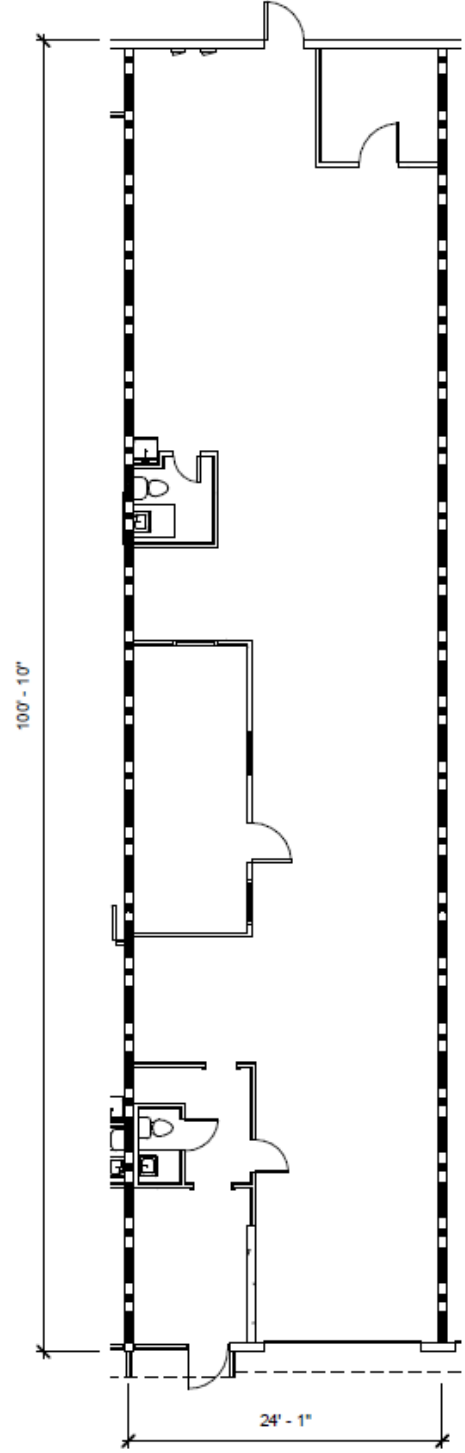


**CLARK HOWELL
COMMERCE CENTER**



4787 CLARK HOWELL HIGHWAY

Suite 4
2,474 RSF
440 SF Office
1 Grade Level Door

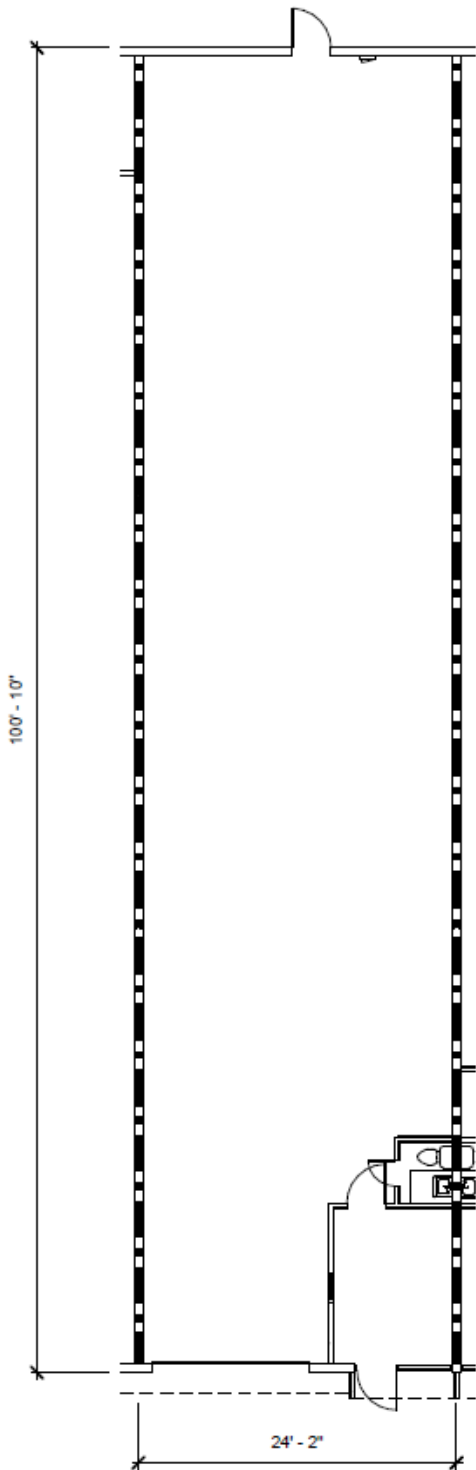


KEY PLAN



4787 CLARK HOWELL HIGHWAY

Suite 5
2,475 RSF
162 SF Office
1 Grade Level Door

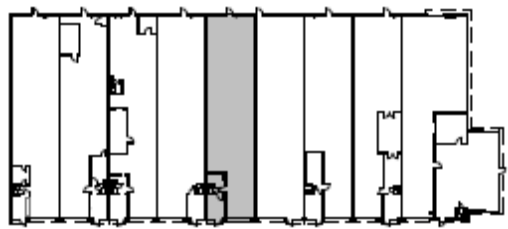
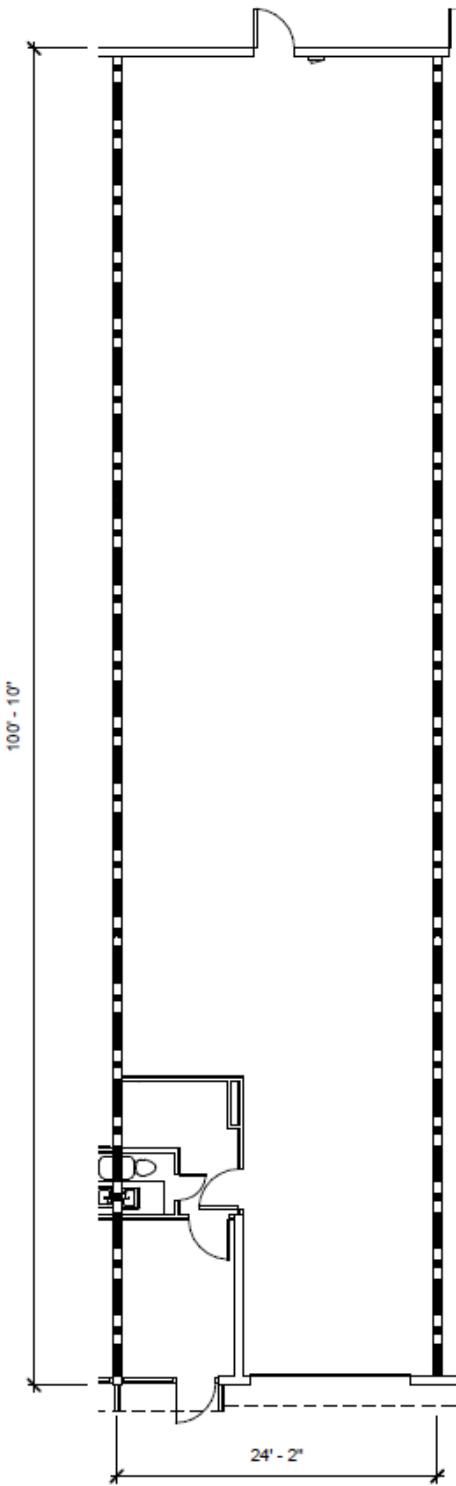


KEY PLAN



4787 CLARK HOWELL HIGHWAY

Suite 6
2,475 RSF
235 SF Office
1 Grade Level Door

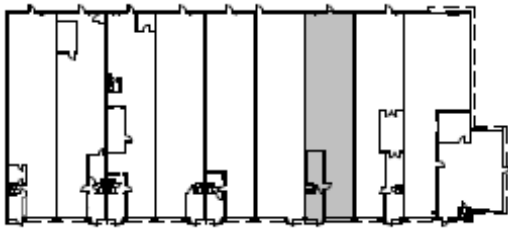
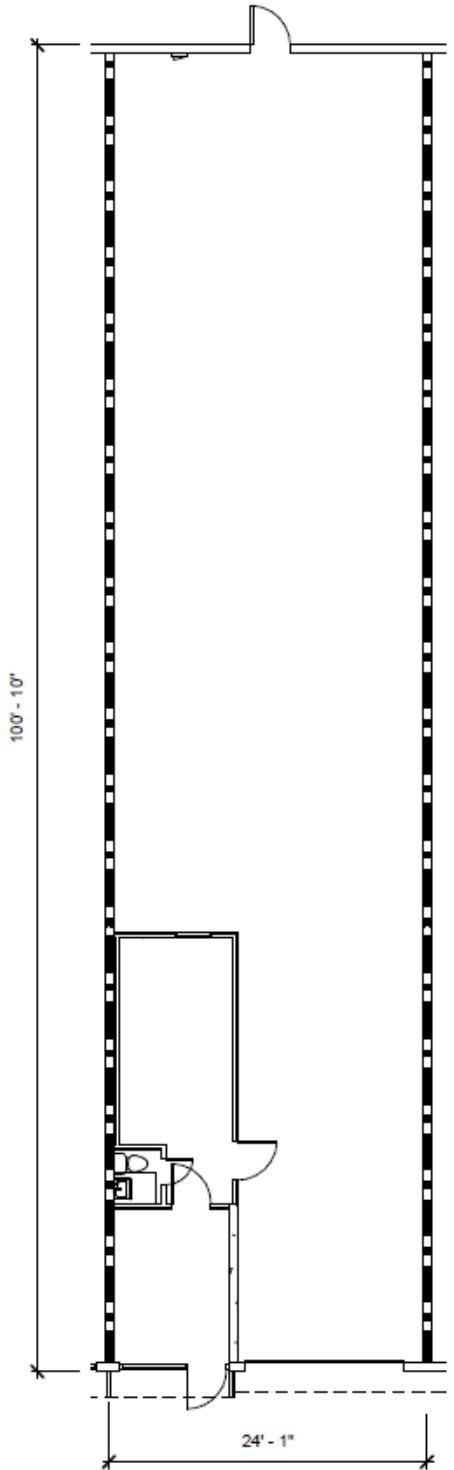


KEY PLAN



4787 CLARK HOWELL HIGHWAY

Suite 8
2,473 RSF
335 SF Office
1 Grade Level Door



KEY PLAN

