

SAKHIL CENTER AT DORAL CONDO OFFICE

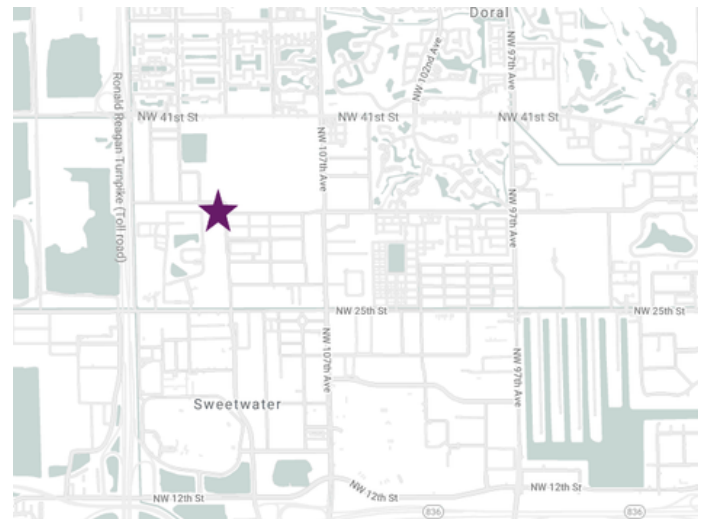
AVAILABLE FOR SUBLEASE

3300 NW 112 AVENUE, UNIT #13, DORAL, FL 33172 | +/- 3,000 SF



PROPERTY HIGHLIGHTS

- ~ 3,000 SF TOTAL
- OFFICE SPACE ON 2ND FLOOR
- THREE (3) PRIVATE OFFICES
- CONFERENCE AREA
- LARGE BULLPEN AREA
- CLOSE PROXIMITY TO FL TURNPIKE & DOLPHIN EXPY
- SUBLEASE TERM THRU AUGUST 31, 2025



SUBLEASE RATE:
\$19 PSF

FULL SERVICE (NET OF JANITORIAL)
PLUS FL SALES TAX



Reshma Parvani, SIOR
Broker
305-342-9576
rparvani@parvanigroup.com

Vishal Parvani
Associate
786-205-5579
vparvani@parvanigroup.com

NOTE: This offering subject to errors, omissions, prior sale or withdrawal.

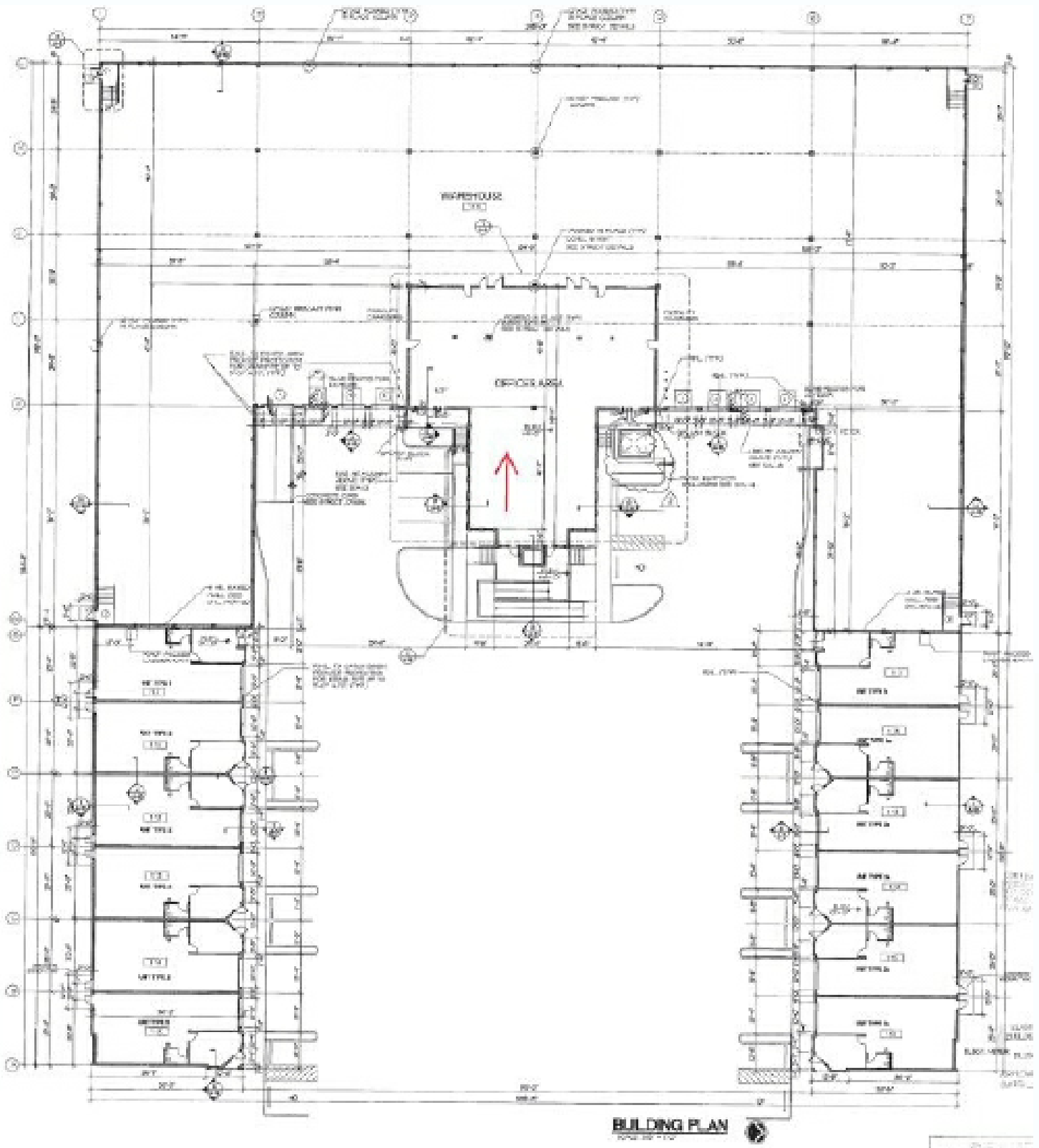
PHOTOS



Reshma Parvani
Broker
305-342-9576
rparvani@parvanigroup.com

Vishal Parvani
Associate
786-205-5579
vparvani@parvanigroup.com

PLANS



Reshma Parvani
Broker
305-342-9576
rparvani@parvanigroup.com

Vishal Parvani
Associate
786-205-5579
vparvani@parvanigroup.com