



LAND AVAILABLE

130 S Fairview Road | Ridley Township, PA | 19022

FOR SALE

PROPERTY OVERVIEW

12 acres in Ridley Township, Delaware County zoned Industrial. Includes tax parcels 38010013600 and 38010016200. Minutes from both 95 and 476. 10 minutes to Philadelphia Airport, 30 minutes to Center City Philadelphia. 5 minutes to Crum Lynne Regional Rail station. 5 minutes to Widener University. Nearby retail includes Wal-Mart, Shop Rite, and Grocery Outlet.

PROPERTY SUMMARY

Available Acres:	12
Sale Price:	\$2,150,000
Zoning:	Industrial
Property Visibility:	Good
County:	Delaware
Municipality:	Ridley Township
Tax ID Number:	3801001360



York Office: 3528 Concord Rd. York, PA 17402
 Exton Office: 1 East Uwchlan Avenue, Suite 409, Exton, PA 19341
 Lancaster Office: 150 Farmington Lane, Suite 201, Lancaster, PA 17601

JEFF HERR | JEFFREY HERR
 717-843-5555
 www.bennettwilliams.com

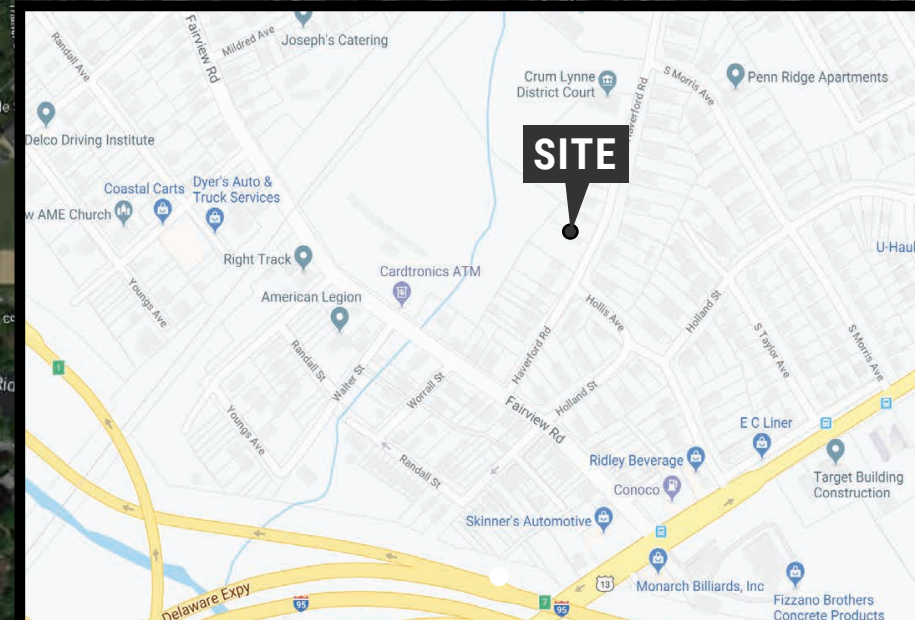
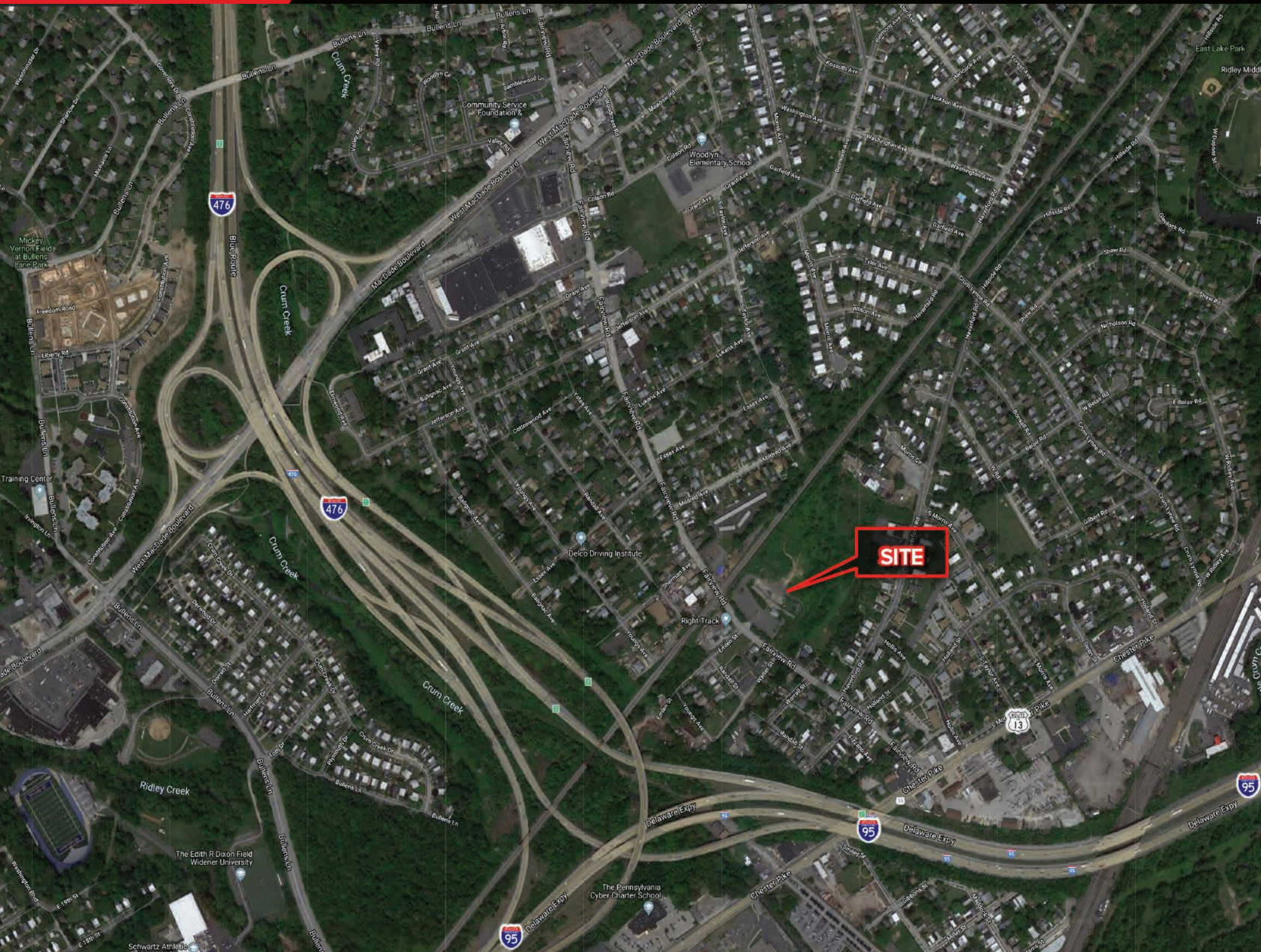


Information shown is purported to be from reliable sources. No representation is made to the accuracy thereof, and is submitted subject to errors, omissions, change in price, prior sale, withdrawal without notice, or other conditions.

LAND AVAILABLE

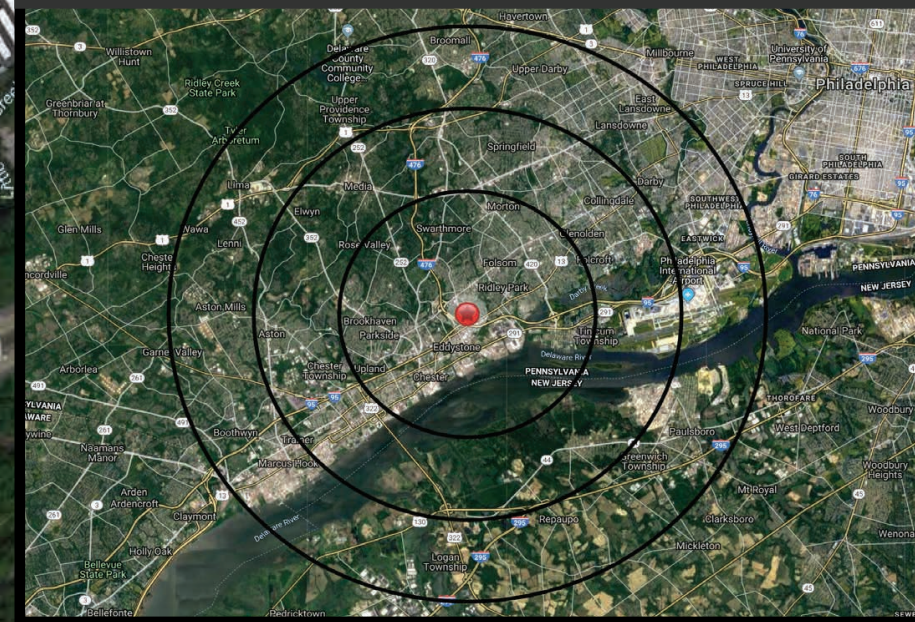
130 S Fairview Road | Ridley Township, PA | 19022

FOR SALE



DEMOGRAPHICS	3 MILE	5 MILE	7 MILE
POPULATION	114,491	245,300	441,602
TOTAL EMPLOYEES	93,169	198,551	355,058
AVERAGE HHI	\$85,586	\$88,151	\$85,334
TOTAL HOUSEHOLDS	44,877	97,890	174,244

TRAFFIC COUNTS
 SOUTH FAIRVIEW ROAD: 9,000 VPD



ACTIVE MEMBER OF:
RETAIL BROKERS NETWORK

York Office: 3528 Concord Rd. York, PA 17402
 Exton Office: 1 East Uwchlan Avenue, Suite 409, Exton, PA 19341
 Lancaster Office: 150 Farmington Lane, Suite 201, Lancaster, PA 17601

JEFF HERR | JEFFREY HERR
 717-843-5555
 www.bennettwilliams.com

Bennett WILLIAMS
 COMMERCIAL

Information shown is purported to be from reliable sources. No representation is made to the accuracy thereof, and is submitted subject to errors, omissions, change in price, prior sale, withdrawal without notice, or other conditions.