



For sale

2655 E. Miner Avenue | Stockton

±7,200 SF metal building on 2.52 acres



Jones Lang LaSalle Brokerage, Inc. RE Lic# 01856260

Property highlights

- ±7,200 SF metal building on 2.52 acres
- Fully fenced with automatic gates on 3 of 4 entrances
- Site is fully paved with lime treated base
- Perimeter LED lighting in yard
- Compressor to remain
- Turn-key, above ground Convault fueling station to remain. 2,000 gallon diesel and 1,000 gallon gas with card reader. Installed in 2022.
- Clarifier in wash bay to capture liquids
- Includes ±1,500-1,800 SF two-story office
- LED warehouse lighting
- 400 amps at 220v (Buyer to confirm)
- 16' to 18' clear height
- APN's: 143-430-210, 220, 230
- Sale Price: \$2,850,000



16' to 18'
clear height



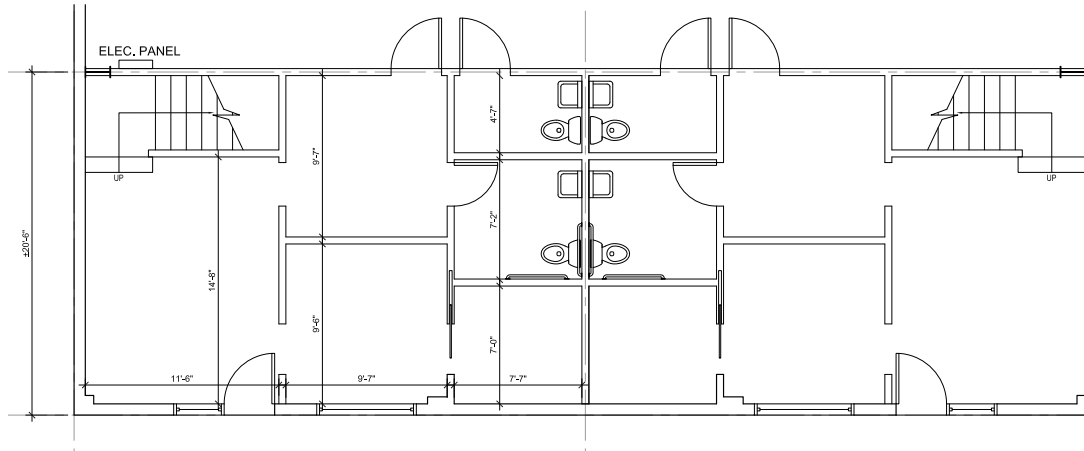
400 amps
@ 220 volt
(Buyer to confirm)



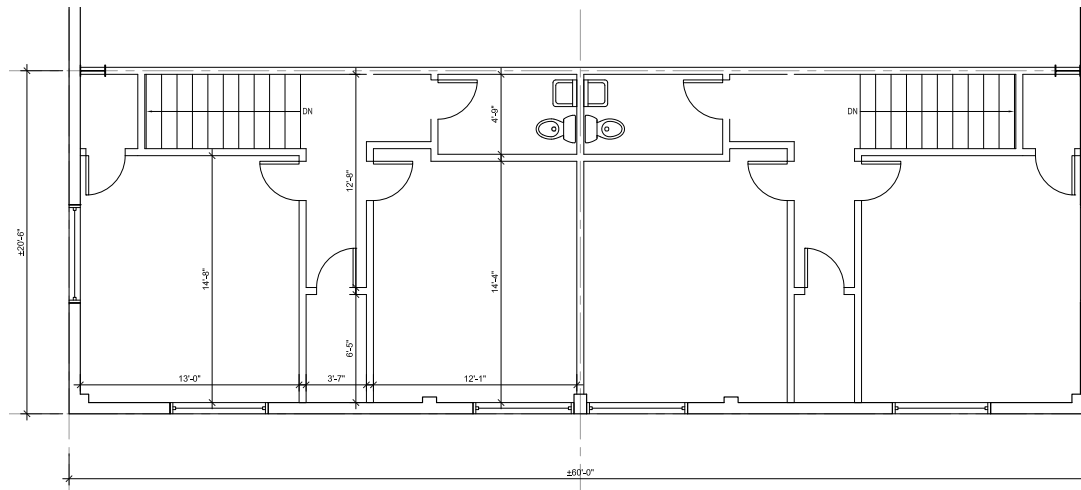
LED warehouse
and yard lighting

Office Floorplan

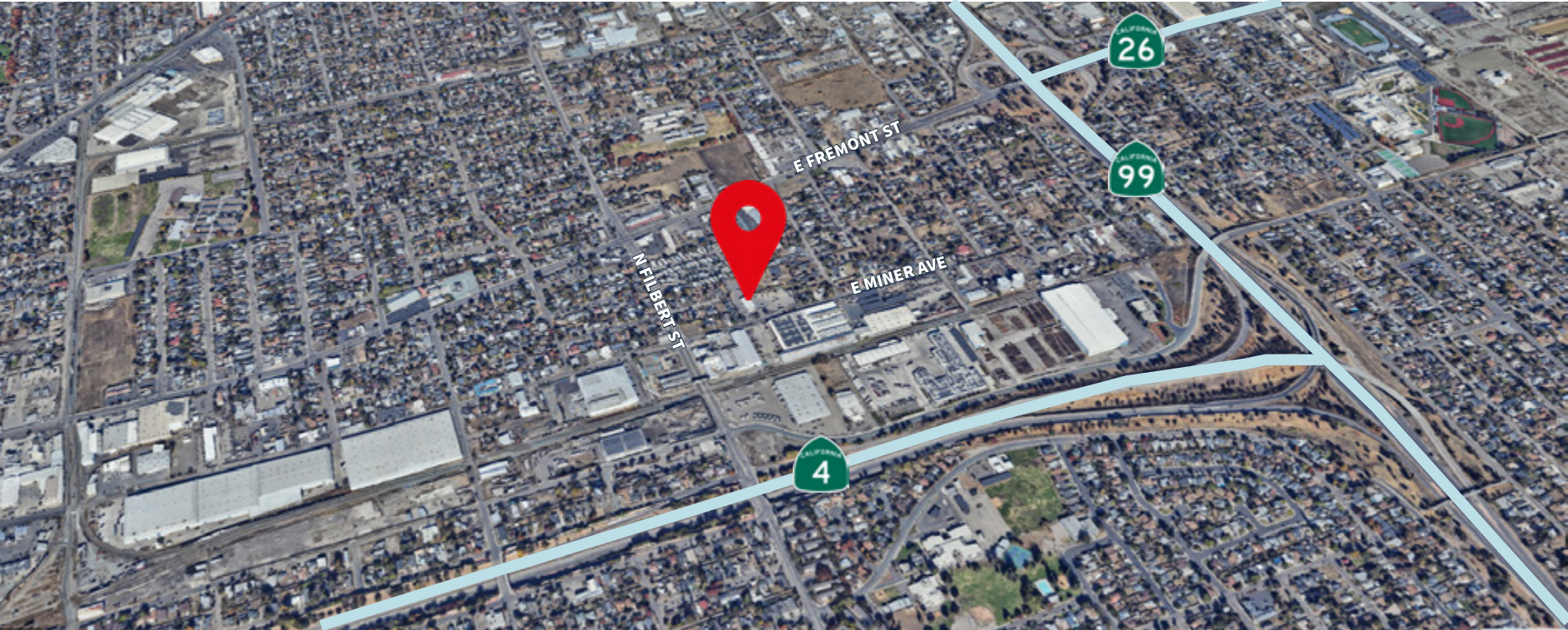
First Floor



Second Floor



Location



2655 E. Miner Ave / Stockton, CA

**For more information or to
tour, please contact:**

Chris Burns

RE Lic# 01880060

+1 925 389 0292

christopher.burns@jll.com

Michael Matter

RE Lic# 01435801

+1 209 390 1702

michael.matter@jll.com



Jones Lang LaSalle Brokerage, Inc.

RE Lic# 01856260

Although information has been obtained from sources deemed reliable, neither Owner nor JLL makes any guarantees, warranties or representations, express or implied, as to the completeness or accuracy as to the information contained herein. Any projections, opinions, assumptions or estimates used are for example only. There may be differences between projected and actual results, and those differences may be material. The Property may be withdrawn without notice. Neither Owner nor JLL accepts any liability for any loss or damage suffered by any party resulting from reliance on this information. If the recipient of this information has signed a confidentiality agreement regarding this matter, this information is subject to the terms of that agreement. ©2024. Jones Lang LaSalle IP, Inc. All rights reserved.

