



AN **ICON** OF THE LES

280 Grand Street is a historic Lower East Side property that serves one of New York's most vibrant neighborhoods.



NOW AVAILABLE FOR LEASE

Currently a bakery, 280 Grand is a fully built-out restaurant space on one of the most high visibility and high traffic streets in the Lower East Side. A conduit connecting the famous Dimes Square portion of the LES and Chinatown, 280 Grand Street has a vibrant mix of art galleries, foodie destinations, nightlife hot spots, and classic Chinatown establishments.

280 GRAND STREET

Between Forsyth and Eldridge Streets

Size

Lower Level	2,174
Ground Floor	1,708
2nd Floor Office	854
3rd Floor Apartment	838

Space Features

Lower Level	Full kitchen build out with type 1 venting and walk in fridges
Ground Floor	11 ft high ceilings

Frontage

Grand St.	25 ft
-----------	-------

Transit



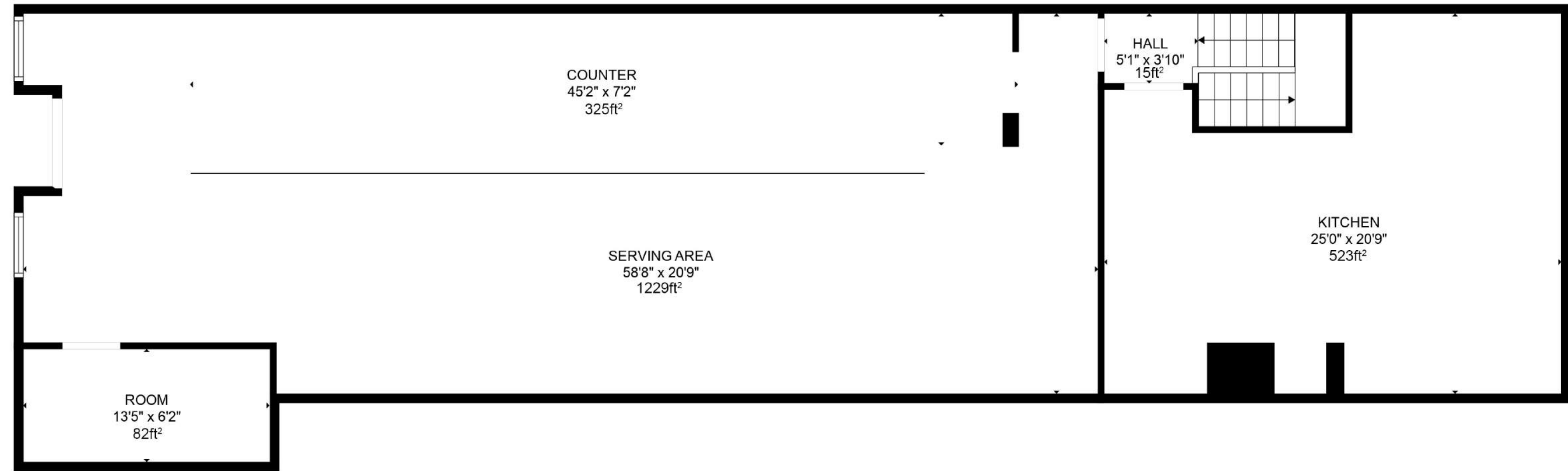
OPEN GROUND FLOOR RESTAURANT SPACE



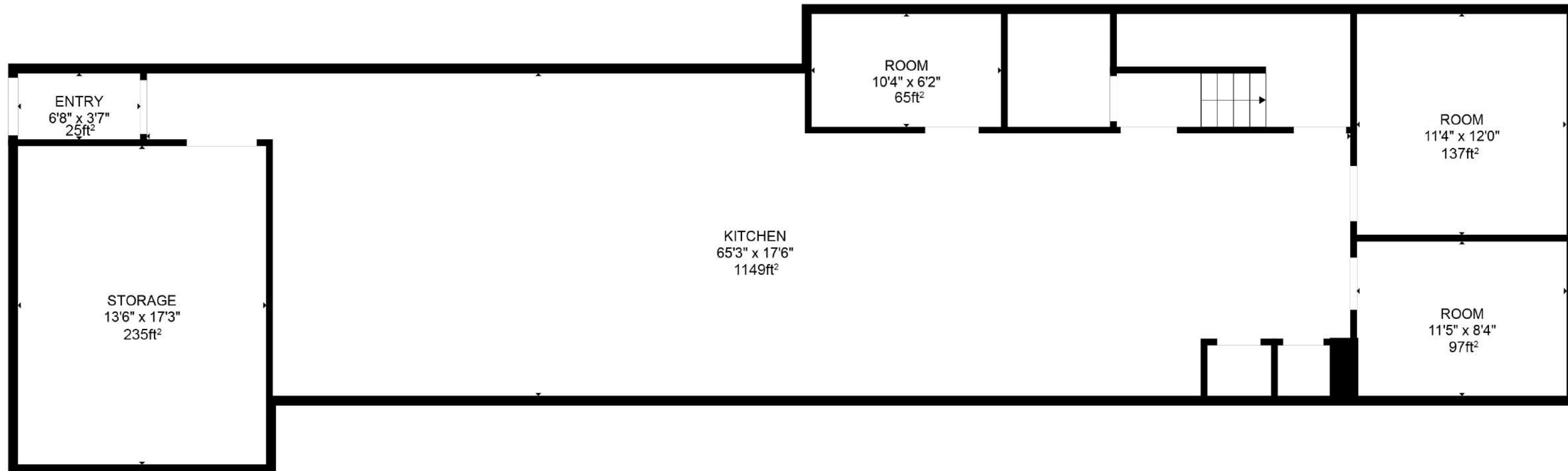
TURNKEY KITCHEN IN LOWER LEVEL

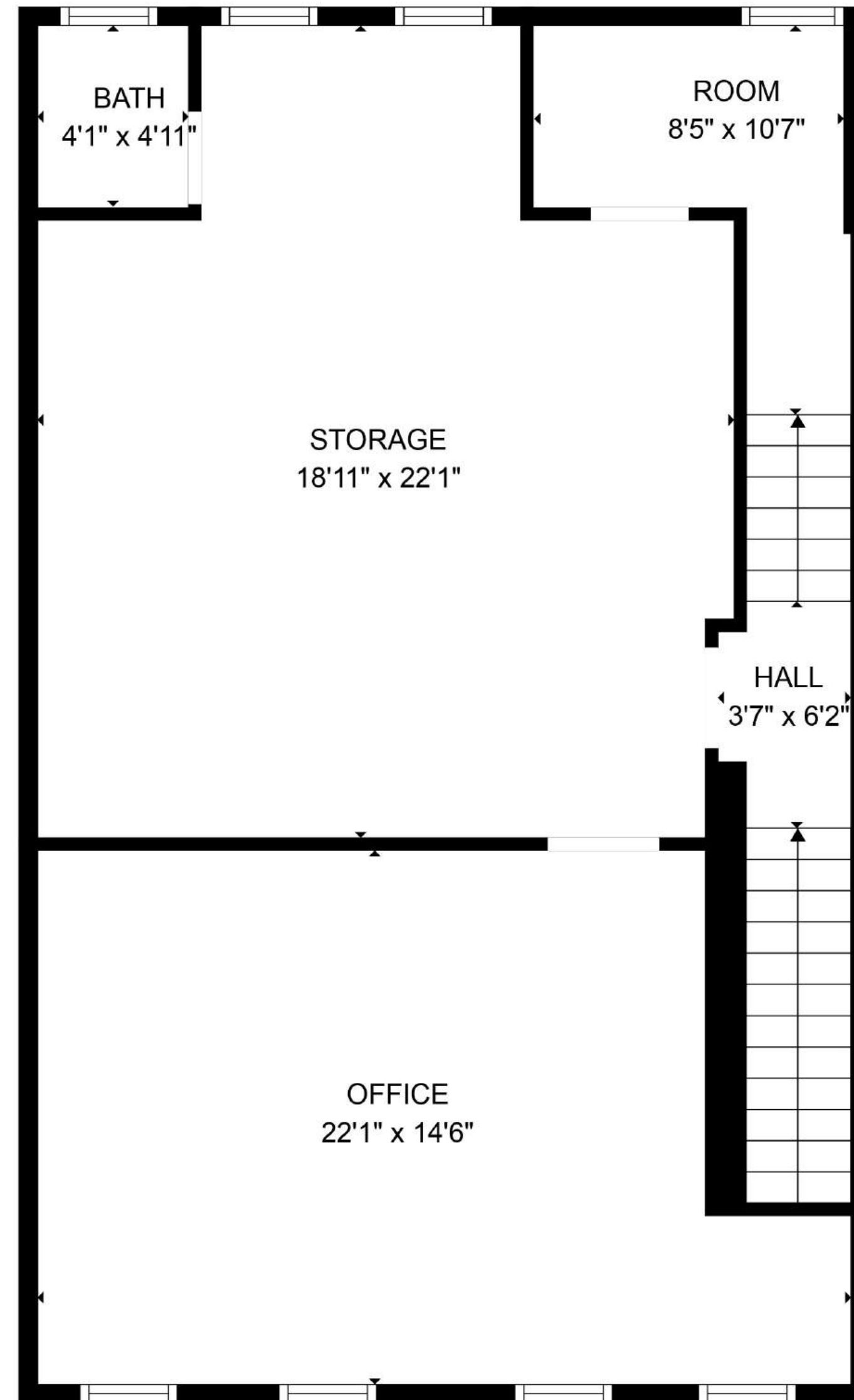


GROUND FLOOR

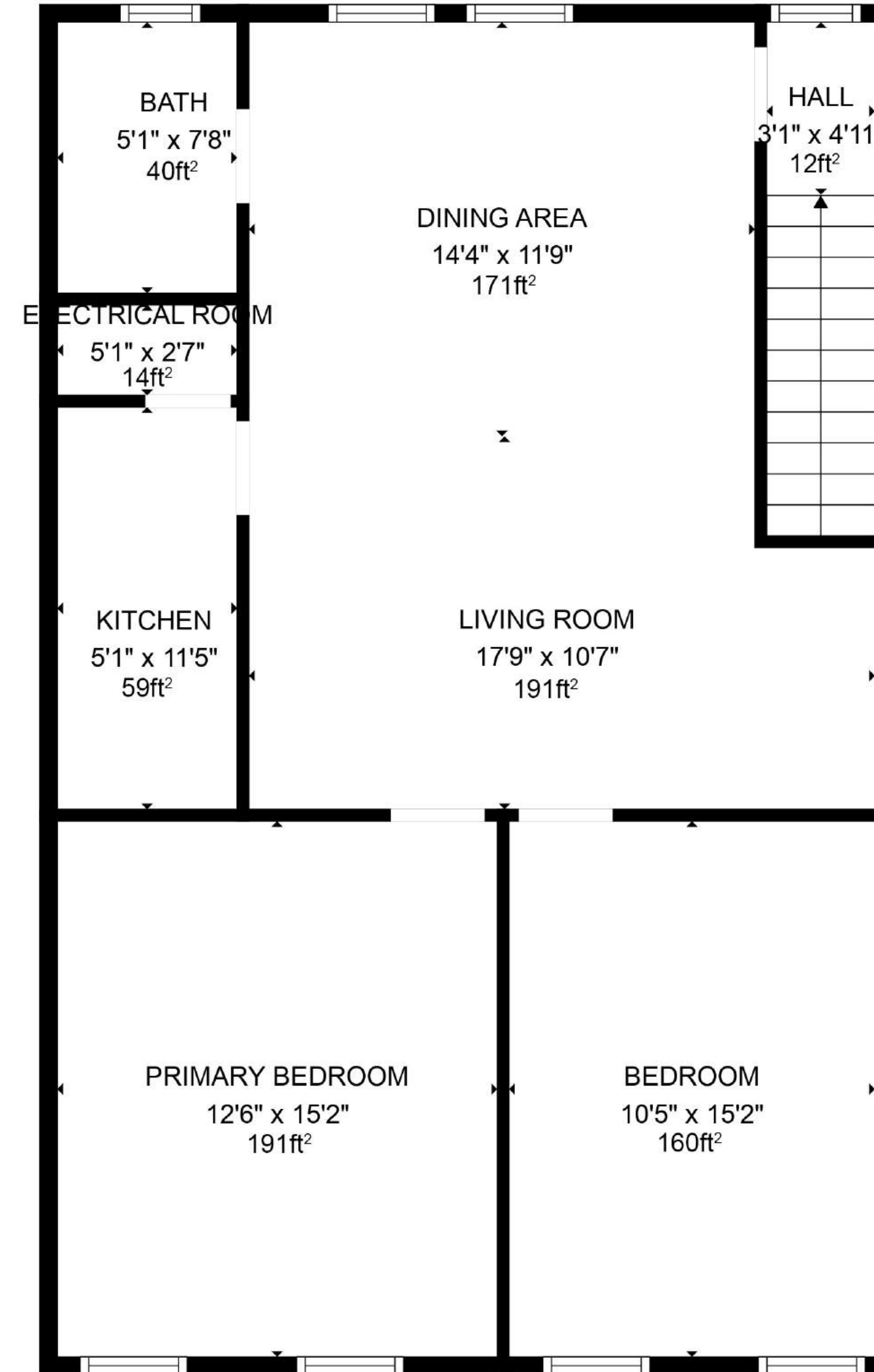


LOWER LEVEL





2ND FLOOR OFFICE



3RD FLOOR APARTMENT

280 GRAND ST.

THE HUANG TEAM

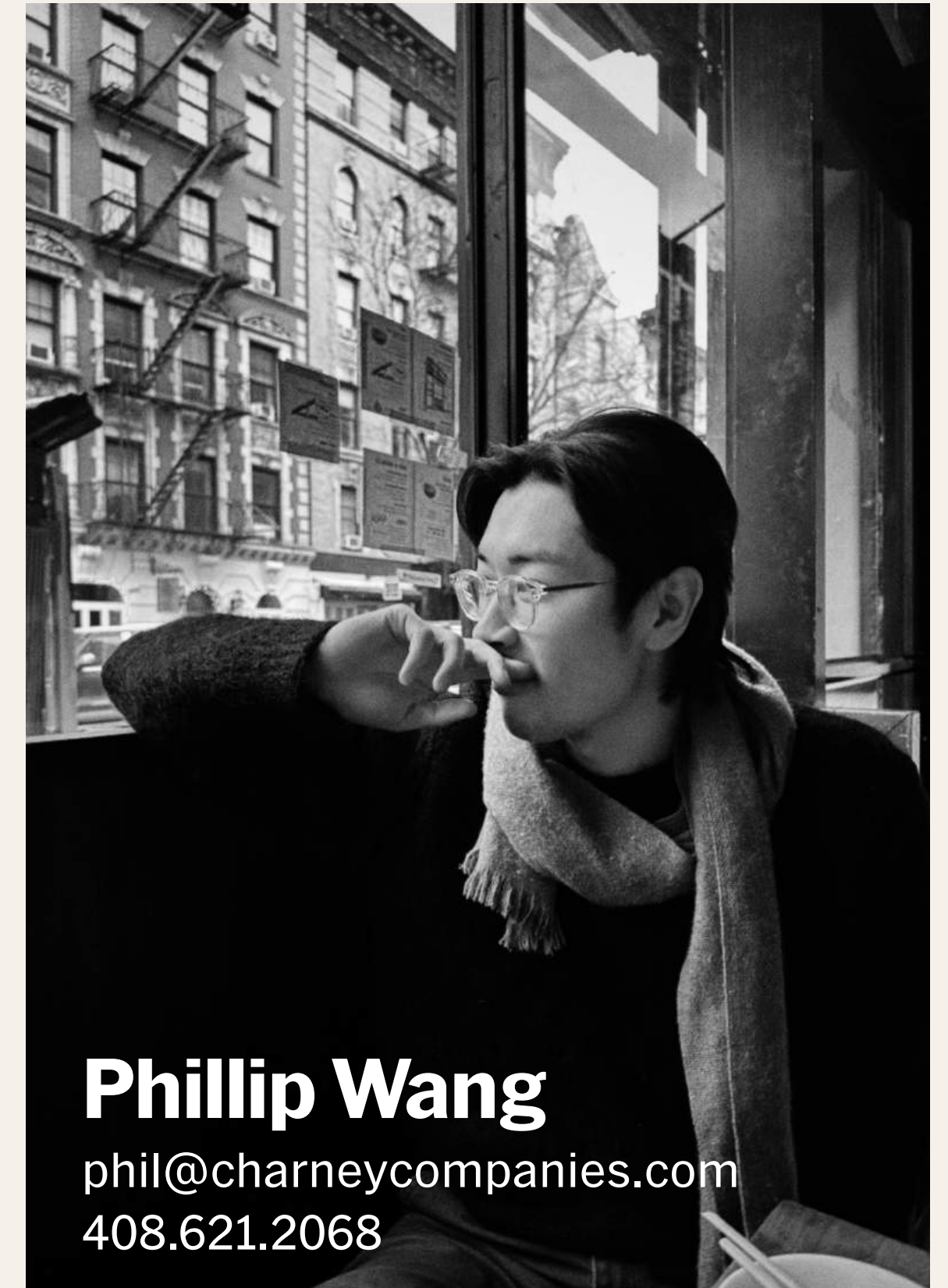


280 Grand St.





C THE HUANG TEAM





**LET'S BUILD
SOMETHING
BEAUTIFUL.**



CHARNEY

www.charneycompanies.com

CHARNEY

www.charneycompanies.com

**LET'S BUILD
SOMETHING
BEAUTIFUL.**

CHARNEY

www.charneycompanies.com

**LE
SO
BE**

www.charneycompa