



# CANDLER

REAL ESTATE

1700 Fulenwider Road | Gainesville, GA 30507  
Industrial Office/Warehouse for Lease



LEE HEMMER, CCIM, SIOR

Principal/Managing Broker [lee@candler.com](mailto:lee@candler.com)

Candler Real Estate | 135 Maple Street NW, Gainesville GA | 770.988.6383 | [candler.com](http://candler.com)

Local Understanding  
**+ Industry Expertise**

# Industrial Office/Warehouse for Lease

1700 Fulenwider Road, Gainesville, GA 30507



## Property Description

Approximately 19,599 square feet of office and warehouse space available for lease at 1700 Fulenwider Road, Gainesville, GA. The space is located within Lawson Air Conditioning and Plumbing's newly constructed building. The premises includes 966 SF of office space suitable for administrative or management use, along with a functional warehouse area ideal for storage, distribution, or light industrial operations. The property provides convenient access for deliveries and daily operations and is situated in a desirable Gainesville industrial corridor.

## Additional Information

- Space will be available July 2026

## Property Highlights

- 19,599 SF Available
- Approx. 966 SF of finished office space
- 3 dock doors
- 6" slab
- Fully Sprinkled
- 3 phase, 480v, 600amp Power Service
- Ceiling Height: Varies due to joist depth. 22' to Roof Deck

## Offering Summary

Lease Rate:	\$12.00 SF/yr (NNN)
OPEX Estimate	\$ 1.00/SF

## Presented By:

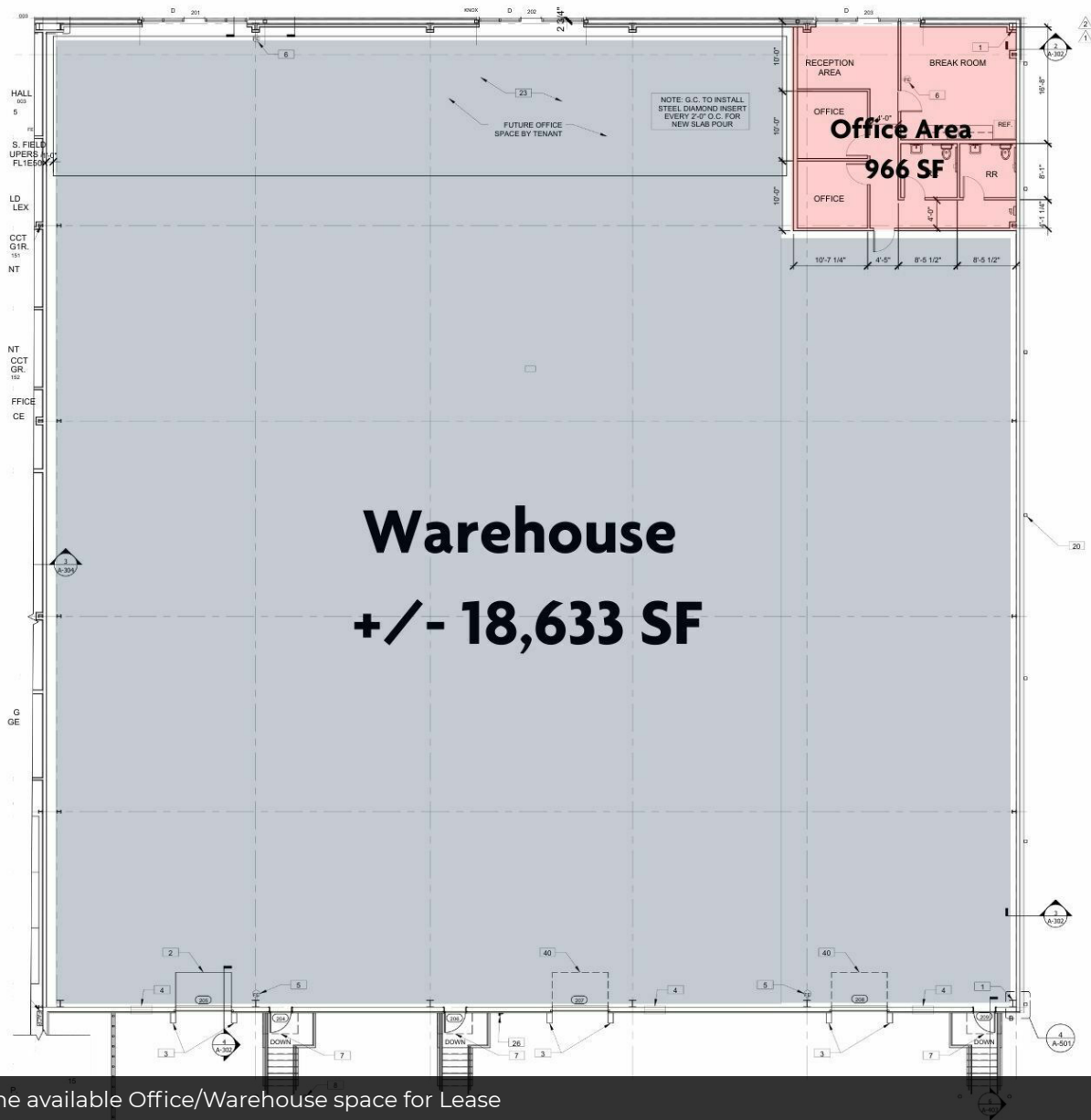
Lee Hemmer, CCIM, SIOR  
770.988.6383  
Principal/Managing Broker  
lee@candler.com



135 Maple Street NW, Gainesville, GA 30501 | 770.988.6383 | [candler.com](http://candler.com)

# Industrial Office/Warehouse for Lease

1700 Fulenwider Road, Gainesville, GA 30507



## Presented By:

Lee Hemmer, CCIM, SIOR

770.988.6383

Principal/Managing Broker

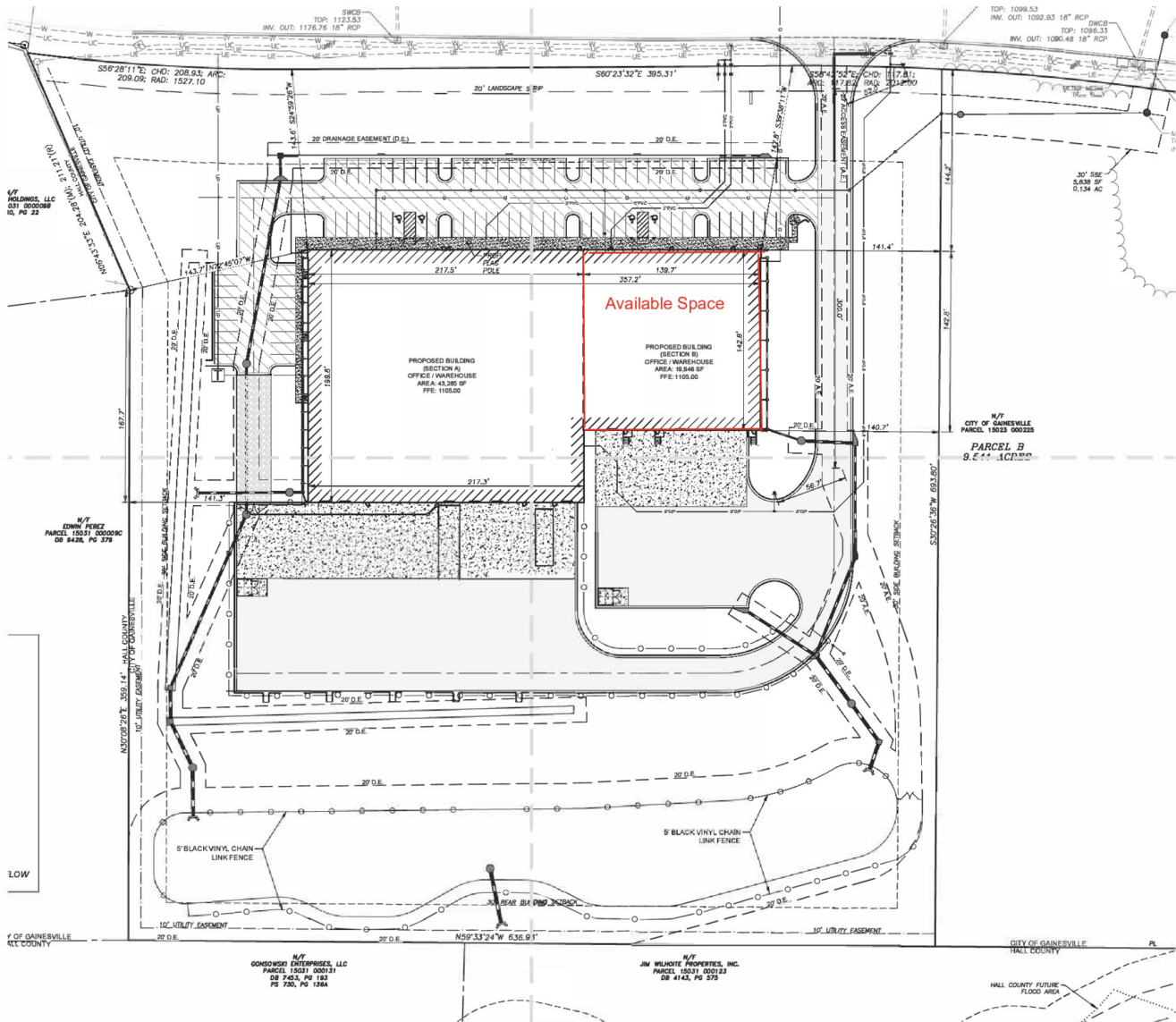
lee@candler.com



135 Maple Street NW, Gainesville, GA 30501 | 770.988.6383 | [candler.com](http://candler.com)

# Industrial Office/Warehouse for Lease

1700 Fulenwider Road, Gainesville, GA 30507



## Site Plan

### Presented By:

Lee Hemmer, CCIM, SIOR

770.988.6383

Principal/Managing Broker

lee@candler.com



135 Maple Street NW, Gainesville, GA 30501 | 770.988.6383 | [candler.com](http://candler.com)

# Industrial Office/Warehouse for Lease

1700 Fulenwider Road, Gainesville, GA 30507



## Presented By:

Lee Hemmer, CCIM, SIOR

770.988.6383

Principal/Managing Broker

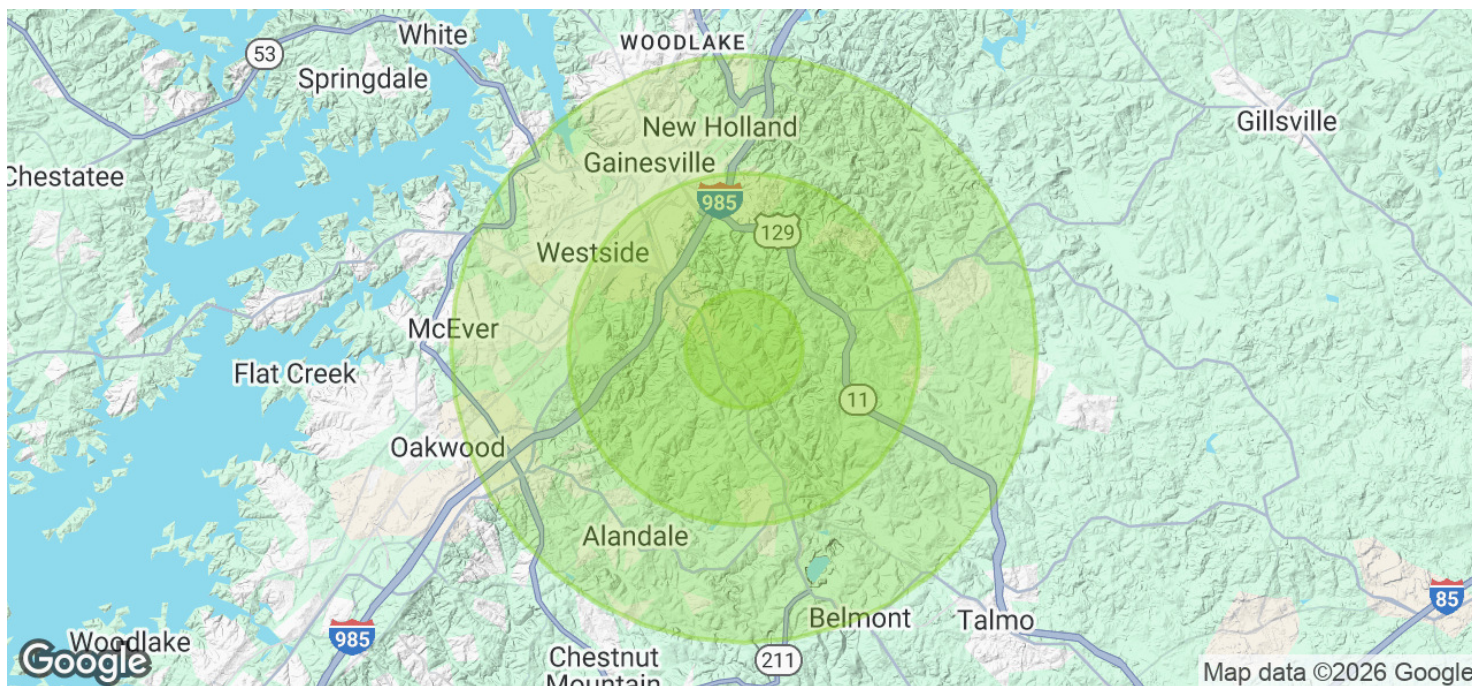
lee@candler.com



135 Maple Street NW, Gainesville, GA 30501 | 770.988.6383 | [candler.com](http://candler.com)

# Industrial Office/Warehouse for Lease

1700 Fulenwider Road, Gainesville, GA 30507



Population	1 Mile	3 Miles	5 Miles
Total Population	317	18,897	62,577
Average Age	33	33	35
Average Age (Male)	33	33	34
Average Age (Female)	33	34	35

Households & Income	1 Mile	3 Miles	5 Miles
Total Households	69	5,235	19,289
# of Persons per HH	4.6	3.6	3.2
Average HH Income	\$74,764	\$69,897	\$73,126
Average House Value	\$251,498	\$255,929	\$295,229

Demographics data derived from AlphaMap

## Presented By:

Lee Hemmer, CCIM, SIOR  
770.988.6383  
Principal/Managing Broker  
lee@candler.com



135 Maple Street NW, Gainesville, GA 30501 | 770.988.6383 | [candler.com](http://candler.com)

# Industrial Office/Warehouse for Lease

1700 Fulenwider Road, Gainesville, GA 30507



**Lee Hemmer, CCIM, SIOR**

Principal/Managing Broker

lee@candler.com

Direct: **770.988.6383**

GA #183296

Candler Real Estate  
135 Maple Street NW  
Gainesville, GA 30501  
770.988.6383

---

## Presented By:

**Lee Hemmer, CCIM, SIOR**

770.988.6383

Principal/Managing Broker

lee@candler.com



135 Maple Street NW, Gainesville, GA 30501 | 770.988.6383 | [candler.com](http://candler.com)