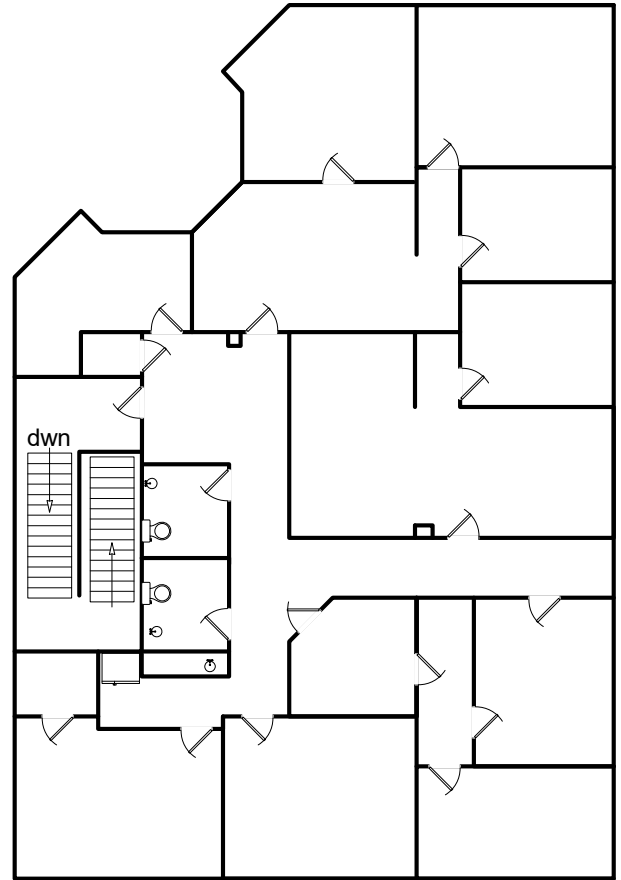


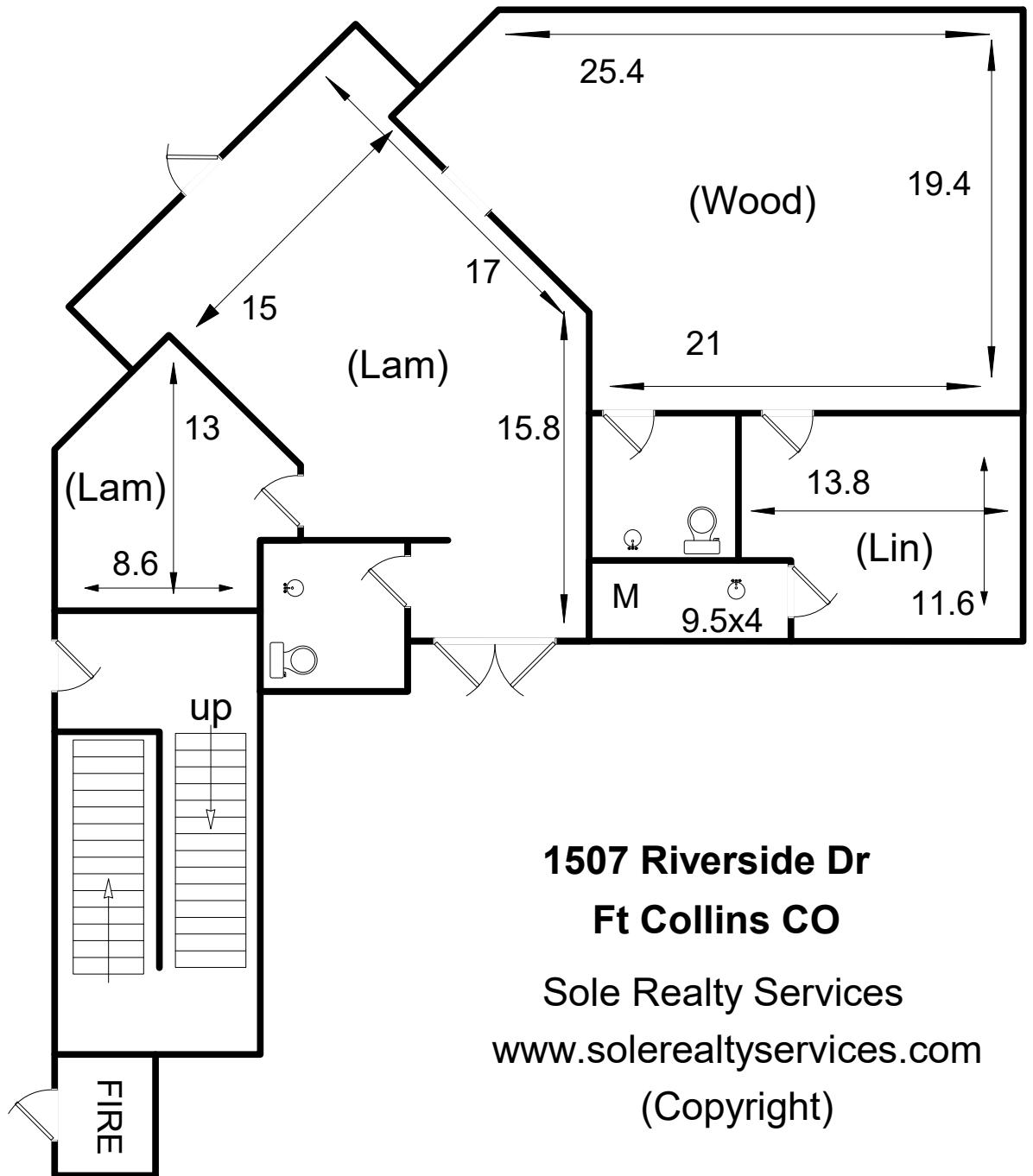
First Floor
3210.1 sf



Second Floor
3028.1 sf

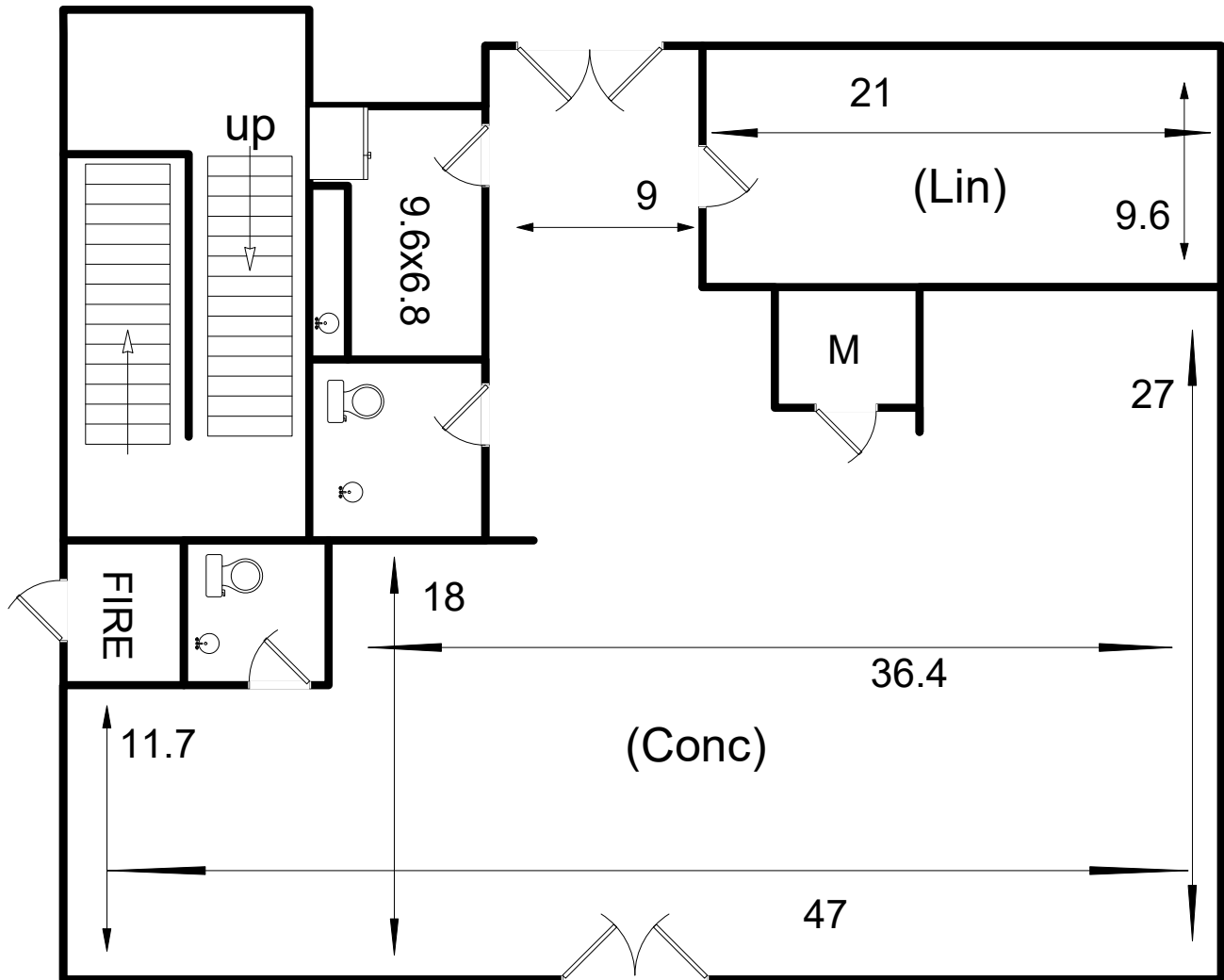
1507 Riverside Dr
Ft Collins CO
Sole Realty Services
www.solerealtyservices.com
(Copyright)

Suite 101
1463 sf



1507 Riverside Dr
Ft Collins CO

Sole Realty Services
www.solerealtyservices.com
(Copyright)

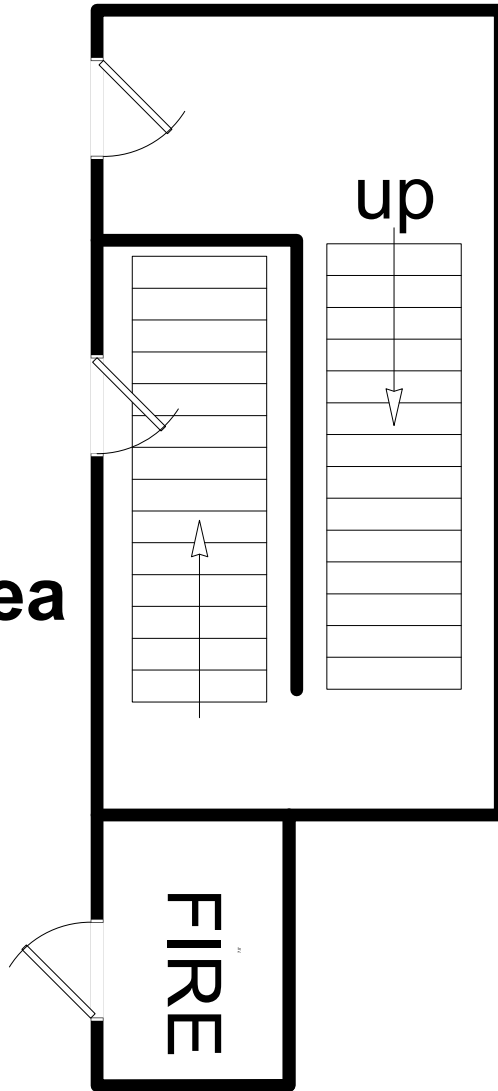


Suite 102
1748 sf

1507 Riverside Dr
Ft Collins CO

Sole Realty Services
www.solerealtyservices.com
 (Copyright)

Common Area



1507 Riverside Dr

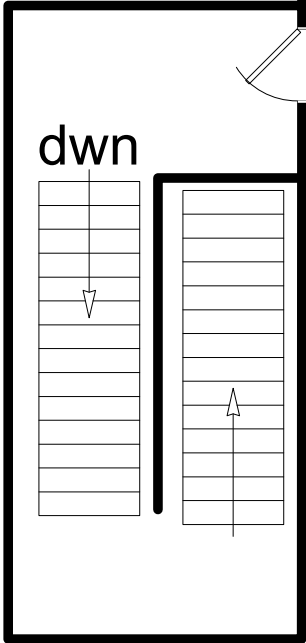
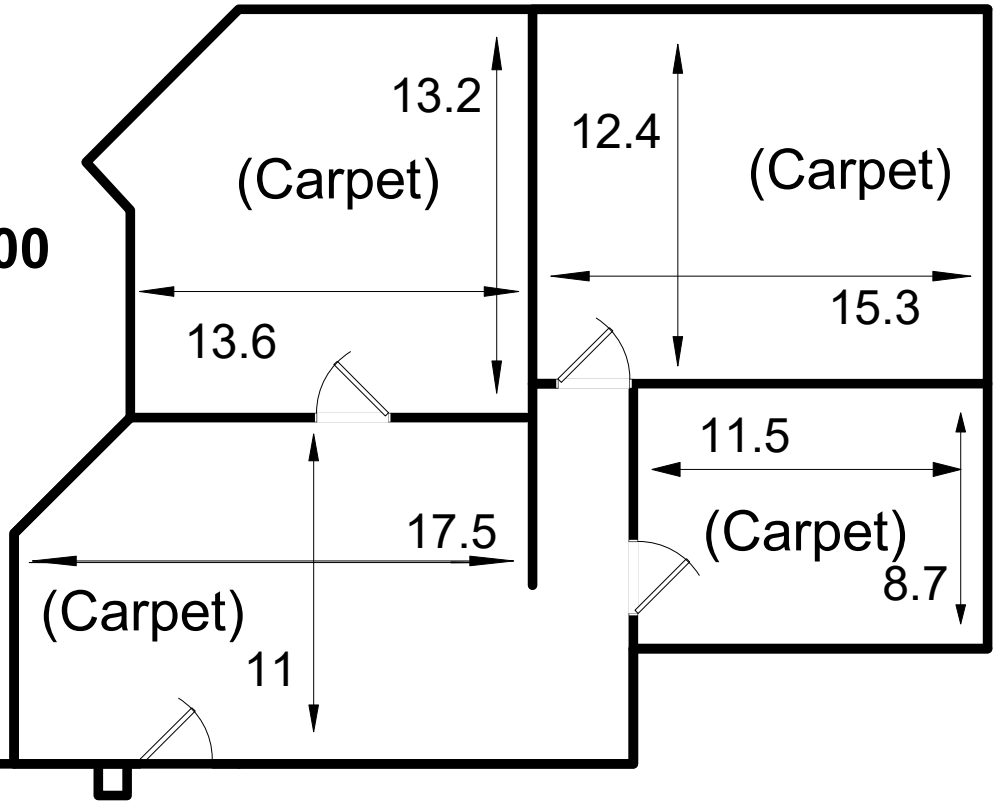
Ft Collins CO

Sole Realty Services

www.solerealtyservices.com

(Copyright)

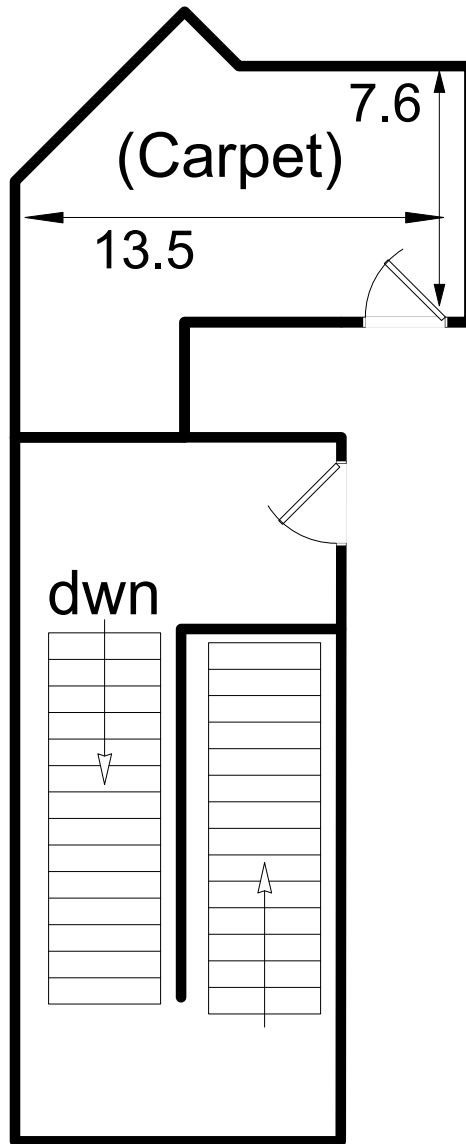
Suite 200
987 sf



1507 Riverside Dr
Ft Collins CO

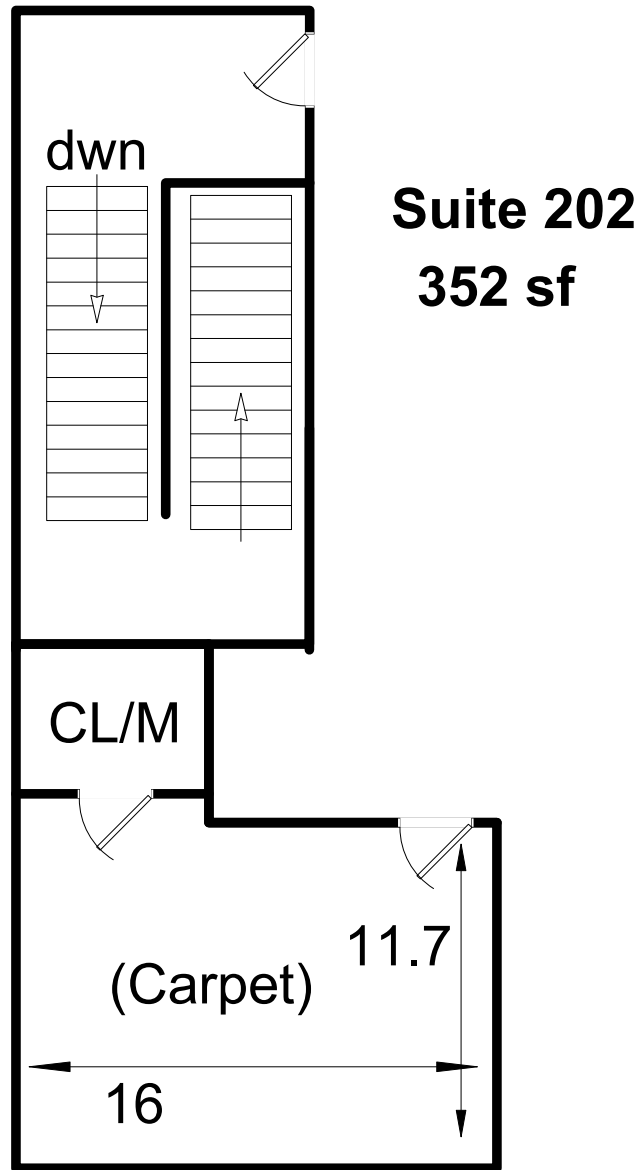
Sole Realty Services
www.solerealtyservices.com
(Copyright)

Suite 201
184 sf



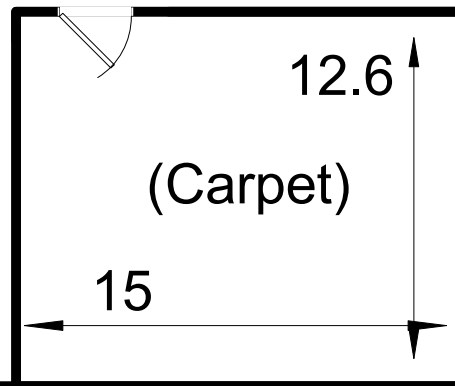
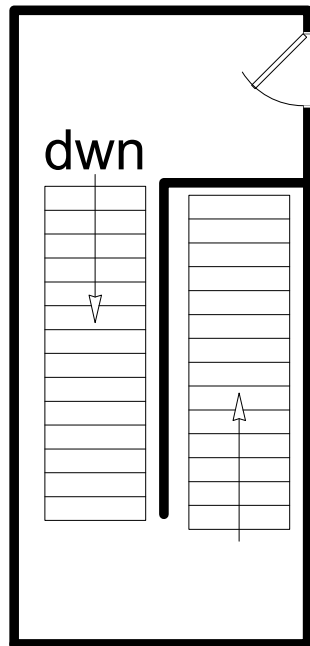
1507 Riverside Dr
Ft Collins CO

Sole Realty Services
www.solerealtyservices.com
(Copyright)



1507 Riverside Dr
Ft Collins CO

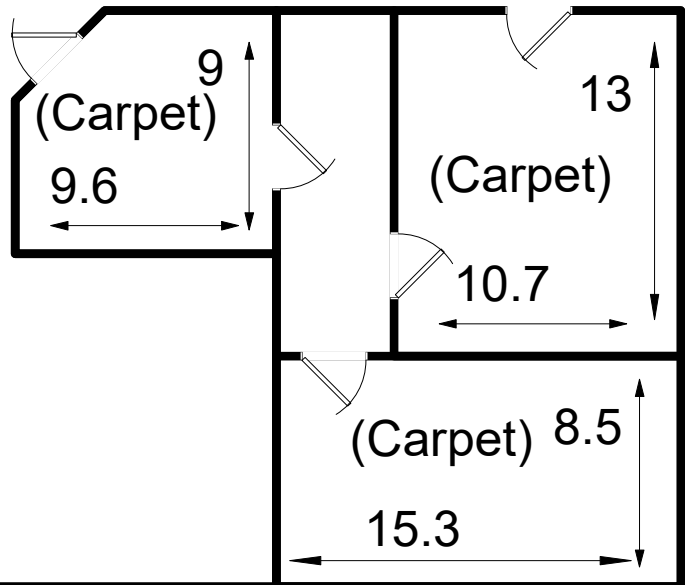
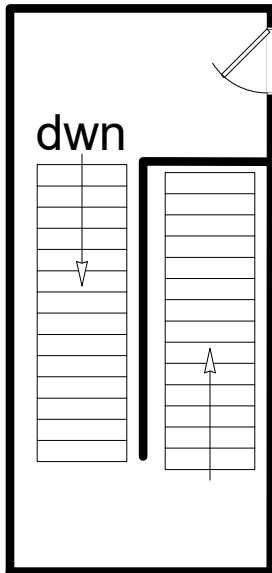
Sole Realty Services
www.solerealtyservices.com
(Copyright)



Suite 203
311 sf

1507 Riverside Dr
Ft Collins CO

Sole Realty Services
www.solerealtyservices.com
(Copyright)



Suite 204

591 sf

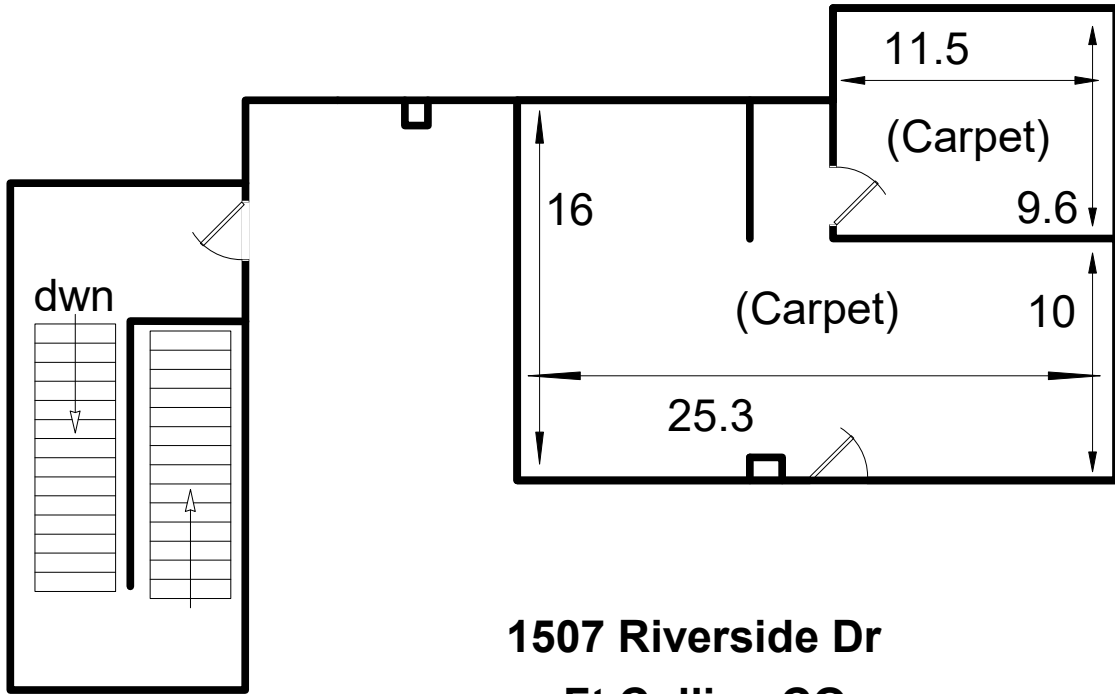
1507 Riverside Dr

Ft Collins CO

Sole Realty Services

www.solerealty.com

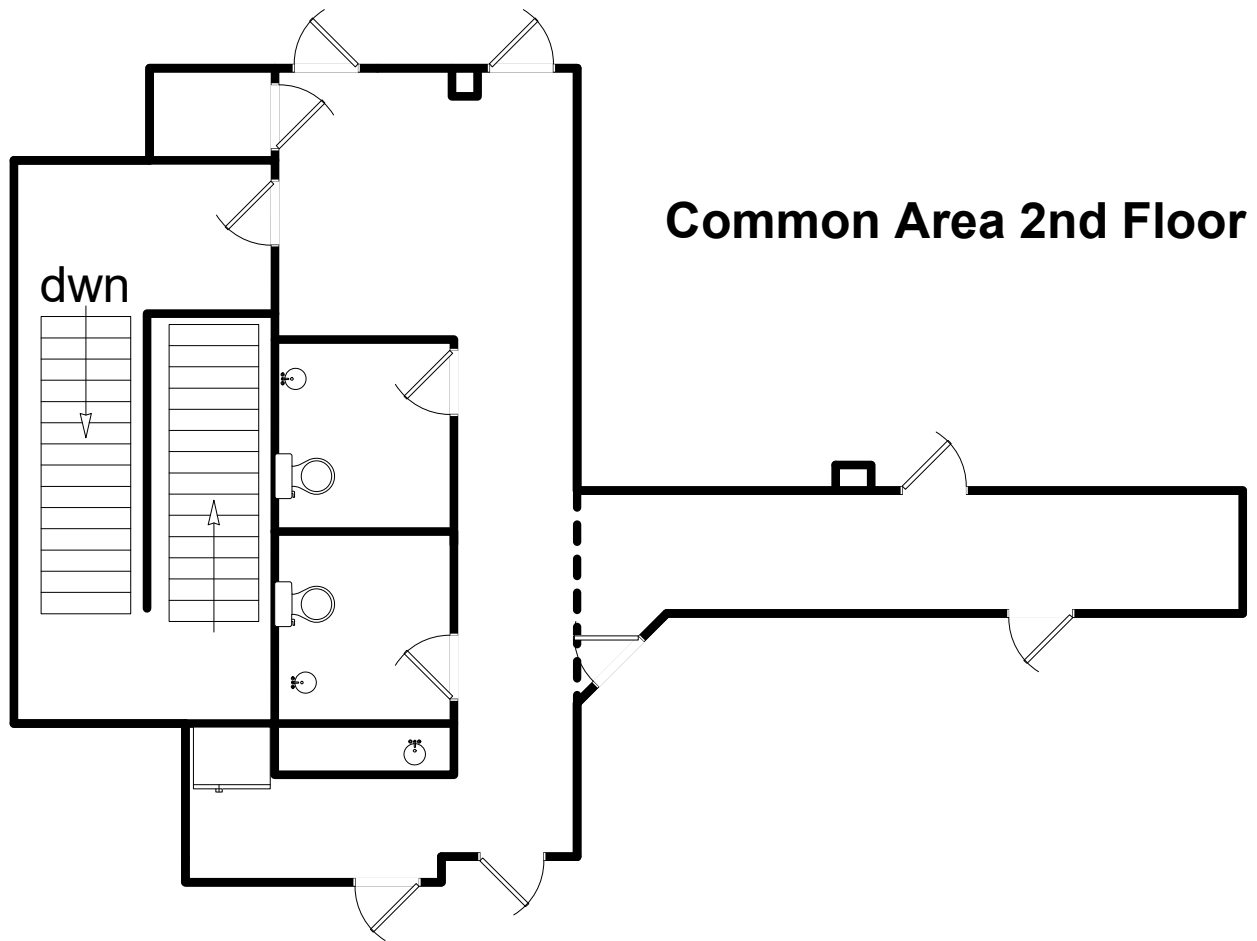
(Copyright)



**Suite 210
633 sf**

**1507 Riverside Dr
Ft Collins CO**

Sole Realty Services
www.solerealtyservices.com
 (Copyright)



Common Area 2nd Floor

**1507 Riverside Dr
Ft Collins CO**

Sole Realty Services
www.solerealtyservices.com
(Copyright)

SUBJECT INFO

File No.:	Parcel No.:		
Property Address:			
City:	County:	State:	ZipCode:
Owner:			
Client:	Client Address:		
Measured By:	Inspection Date:		

SKETCH

First Floor (GLA1)	0.5 x 3.40 x 1.70 = 2.90
0.5 x 19.97 x 0.14 = 1.41	0.5 x 5.09 x 2.55 = 6.48
70.00 x 26.00 = 1820.00	3.60 x 3.40 = 12.24
0.5 x 19.83 x 9.91 = 98.31	7.00 x 4.40 = 30.80
0.5 x 7.98 x 3.99 = 15.91	8.00 x 7.20 = 57.60
19.83 x 5.64 = 111.87	Total area: 129.11
0.5 x 7.78 x 3.89 = 15.13	
48.20 x 22.00 = 1060.40	Suite 202 (GLA1)
19.97 x 4.36 = 87.05	18.20 x 6.70 = 121.94
Total area: 3210.07	12.00 x 10.00 = 120.00
	Total area: 241.94

Second Floor (GLA1)	Suite 203 (GLA1)
29.77 x 7.63 = 227.16	15.50 x 13.00 = 201.50
0.5 x 5.70 x 2.85 = 8.12	Total area: 201.50
11.23 x 3.60 = 40.43	
0.5 x 5.10 x 2.55 = 6.51	Suite 204 (GLA1)
0.5 x 3.39 x 1.70 = 2.87	0.5 x 4.95 x 2.47 = 6.12
0.5 x 5.10 x 0.01 = 0.03	6.00 x 3.50 = 21.00
5.10 x 2.39 = 12.21	22.50 x 15.80 = 355.50
29.77 x 7.20 = 214.34	9.50 x 6.70 = 63.65
48.20 x 48.00 = 2313.60	Total area: 446.28
0.5 x 3.20 x 1.53 = 2.45	Suite 210 (GLA1)
0.5 x 5.33 x 2.67 = 7.11	26.00 x 16.50 = 429.00
3.77 x 3.20 = 12.05	12.30 x 4.00 = 49.20
26.00 x 6.97 = 181.21	Total area: 478.20
Total area: 3028.08	

Suite 101 (GLA1)	Common Area 2nd Floor (GLA1)
0.5 x 19.97 x 0.14 = 1.41	0.5 x 4.95 x 2.47 = 6.13
7.30 x 2.50 = 18.25	26.00 x 4.80 = 124.80
22.00 x 8.00 = 176.00	28.20 x 10.00 = 282.00
0.5 x 19.83 x 9.91 = 98.31	22.00 x 6.70 = 147.40
0.5 x 7.98 x 3.99 = 15.91	27.20 x 5.30 = 144.16
19.83 x 5.64 = 111.87	16.70 x 3.60 = 60.11
0.5 x 7.78 x 3.89 = 15.12	Total area: 764.59
11.80 x 1.50 = 17.70	
31.30 x 26.00 = 813.80	
0.5 x 30.50 x 0.01 = 0.17	
19.97 x 4.36 = 87.05	
Total area: 1355.59	

Suite 102 (GLA1)

43.00 x 18.20 = 782.60
37.80 x 18.00 = 680.40
12.20 x 5.00 = 61.00
30.50 x 2.50 = 76.25
Total area: 1600.25

Common Area (GLA1)

28.00 x 5.00 = 140.00
20.96 x 5.50 = 115.27
0.5 x 5.00 x 0.01 = 0.03
Total area: 255.30

Suite 200 (GLA1)

0.5 x 5.70 x 2.85 = 8.12
11.23 x 3.77 = 42.33
0.5 x 5.12 x 2.55 = 6.53
0.5 x 3.51 x 1.68 = 2.94
5.12 x 2.26 = 11.58
0.5 x 5.12 x 0.22 = 0.56
8.00 x 7.80 = 62.40
26.00 x 22.20 = 577.20
13.70 x 4.00 = 54.80
Total area: 766.47

Suite 201 (GLA1)

5.30 x 3.60 = 19.09

SUBJECT INFO

File No.:	Parcel No.:		
Property Address:			
City:	County:	State:	ZipCode:
Owner:			
Client:	Client Address:		
Measured By:	Inspection Date:		

SKETCH

