



For Sale and For Lease

**W190N11260, W190N11333 &
W190N11393 Carnegie Drive
Germantown, WI 53022**

+/- 20,616 SF, +/- 24,503 SF, +/- 105,664 SF Available For Sale and Lease

| | |
|---------------------|--|
| Total Building Size | Building 1: +/- 20,616 SF Building 2: +/- 24,503 SF Building 3: +/- 105,664 SF |
| Available SF | Building 1: +/- 20,616 SF Building 2: +/- 24,503 SF Building 3: +/- 105,664 SF |
| Property Size | Building 1: +/- 3.34 Acres Building 2: +/- 3.02 Acres Building 3: +/- 5.75 Acres |
| Clear Height | Building 1: +/- 17' - 20' Building 2: +/- 15' - 17' Building 3: +/- 17' - 24' |
| Zoning | M-1 Limited Industrial |
| Power | To Be Verified By Tenant/Buyer |
| Loading | Building 1: 1 Drive-in Door (12'x12') 2 enclosed Sawtooth Docks (1 with dock plate) Building 2: 2 Drive-in Doors (12'x12') 1 Dock (8'x10') Building 3: 3 Drive-in Doors 14 Docks (8 with levelers) |
| Year Built | Building 1: 1973 Building 2: 1977,1996 Building 3: 1971, 1974, 1988, 2002 |
| Est OpEx | TBV |
| Lease Rate | Negotiable |
| Sale Price | Building 1: \$1,400,000 Building 2: Subject to Offer Building 3: Subject to Offer |

Contact us:

Steve Sewart
Partner
+1 414 278 6823 (direct)
+1 414 732 3490 (mobile)
steve.sewart@colliers.com

Brett Garceau, SIOR
Executive Vice President
+1 414 278 6878 (direct)
+1 262 501 8319 (mobile)
brett.garceau@colliers.com

Colliers | Wisconsin
833 E Michigan St., Suite 500
Milwaukee, WI 53202
P: +1 414 276 9500
F: +1 414 276 9501

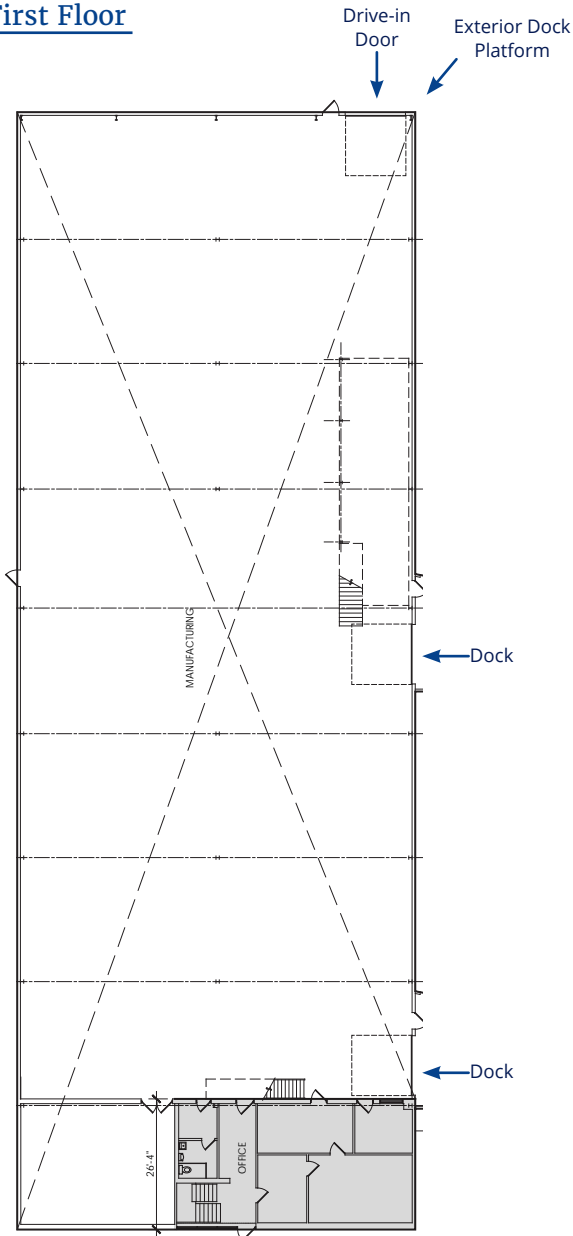
W190N11260 Carnegie Drive Building 1



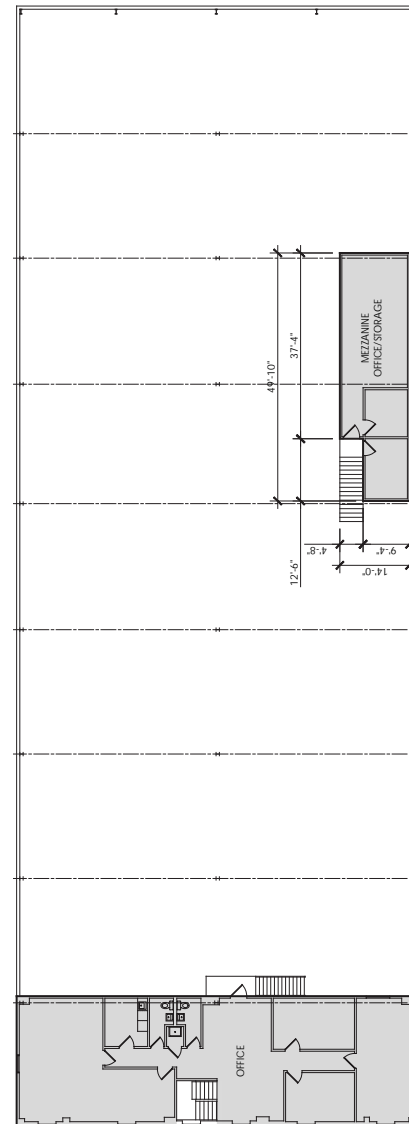
| | |
|--------------|---|
| Building SF | +/- 20,616 SF |
| Office SF | +/- 3,314 SF <i>(includes +/- 2,084 SF of 2nd floor office)</i> |
| Warehouse SF | +/- 17,302 SF <i>(excludes +/- 639 SF of mezzanine storage)</i> |
| Clear Height | +/- 17' - 20' |
| Loading | 1 Drive-in Door (12' x 12') 2 enclosed Sawtooth Docks (1 with dock plate) |

Additional land available for outdoor storage, overflow fleet/vehicle parking or building expansion (subject to municipal approval).

First Floor



Second Floor

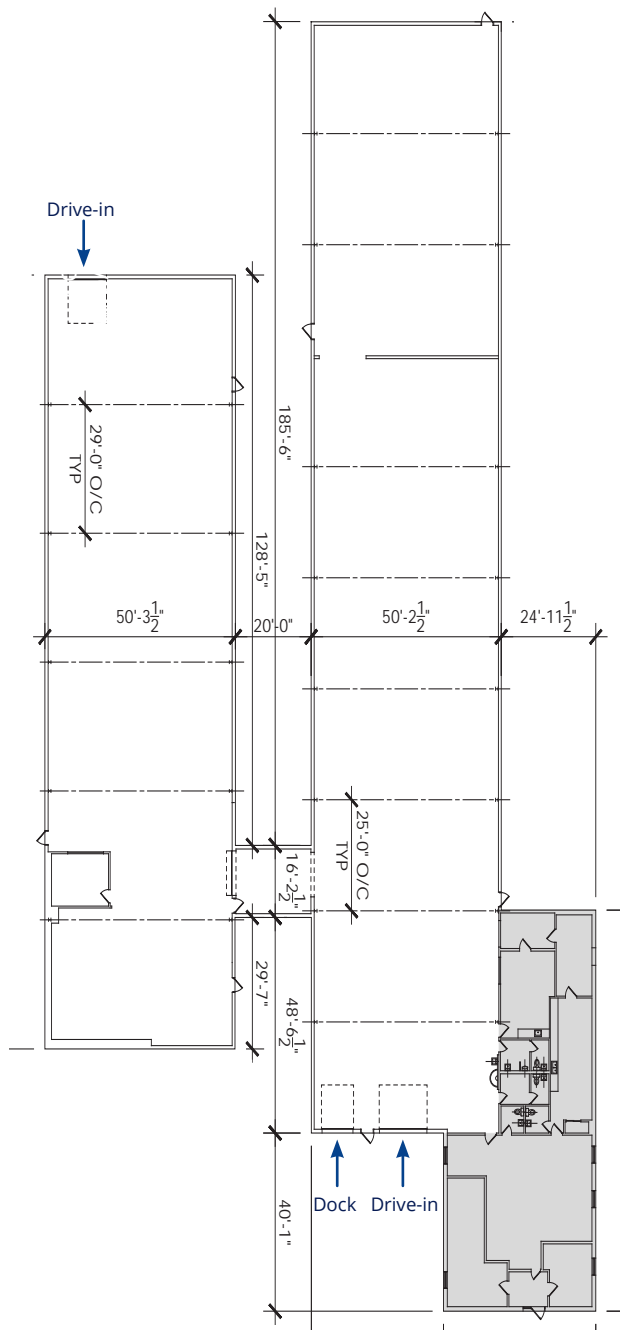


W190N11333 Carnegie Drive Building 2



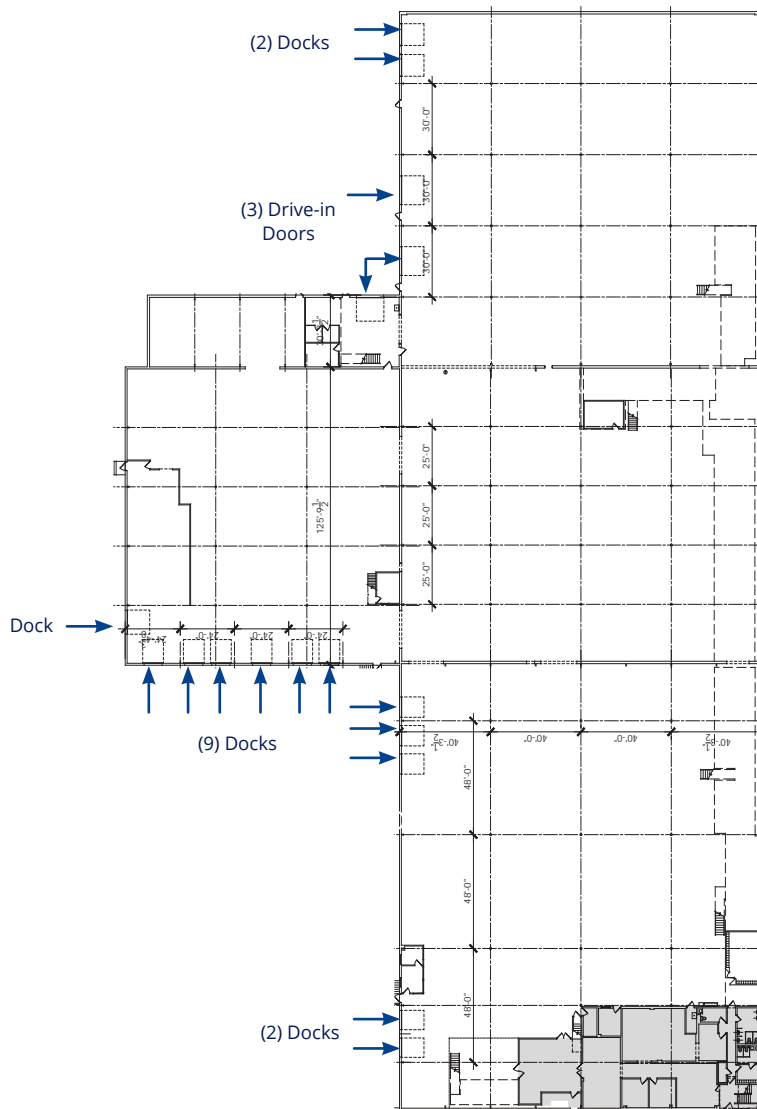
| | |
|--------------|---|
| Building SF | +/- 24,503 SF |
| Office SF | +/- 2,896 SF |
| Warehouse SF | +/- 21,607 SF |
| Clear Height | +/- 15' - 17' |
| Loading | 2 Drive-in Doors (12' x 12') 1 Dock (8' x 10') |

Clear span warehouse

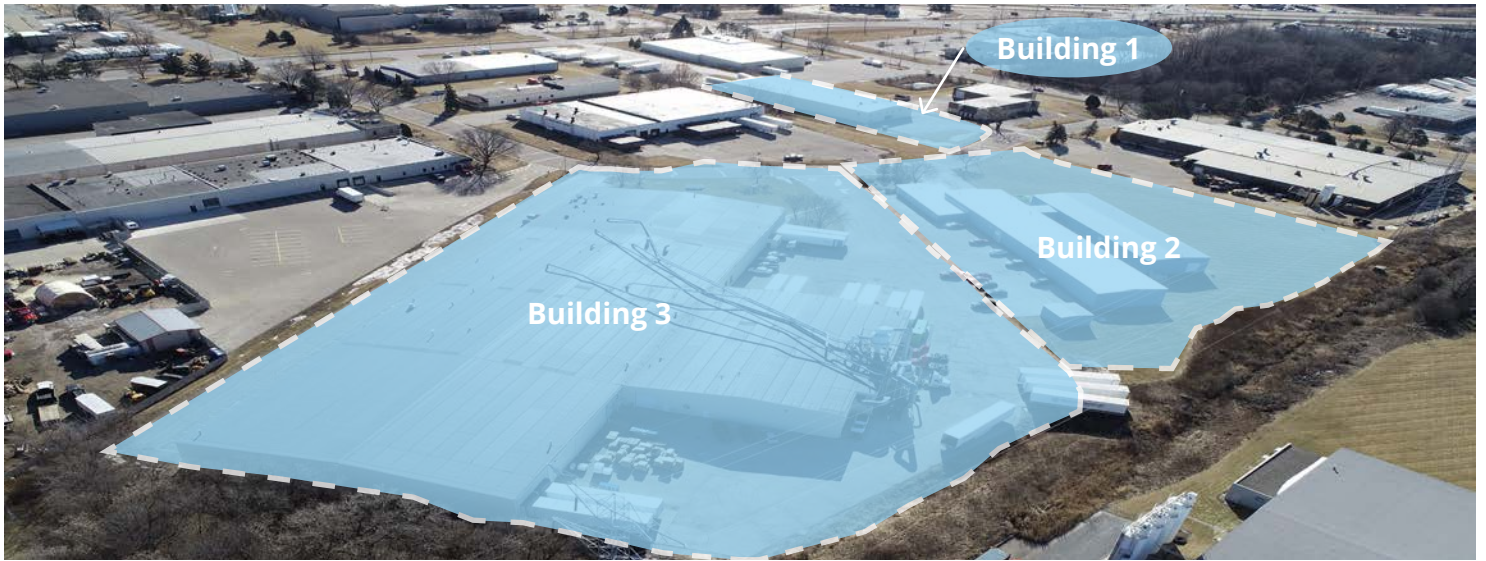


W190N11393 Carnegie Drive Building 3

| | |
|------------------------|--|
| Building SF | +/- 105,664 SF |
| Office SF | +/- 10,140 SF |
| Warehouse SF | +/- 88,787 SF |
| Mezzanine Warehouse SF | +/- 6,737 SF |
| Clear Height | +/- 17' - 24' |
| Loading | 3 Drive-In Doors (12' x 12') 14 Docks (8 with levelers) |
| Power | 480v 3-phase 2000A 240v 3-phase 1200A 120/240 1-phase 800A (To be verified by Tenant/Buyer) |



W190N11393 Carnegie Drive



Building 1

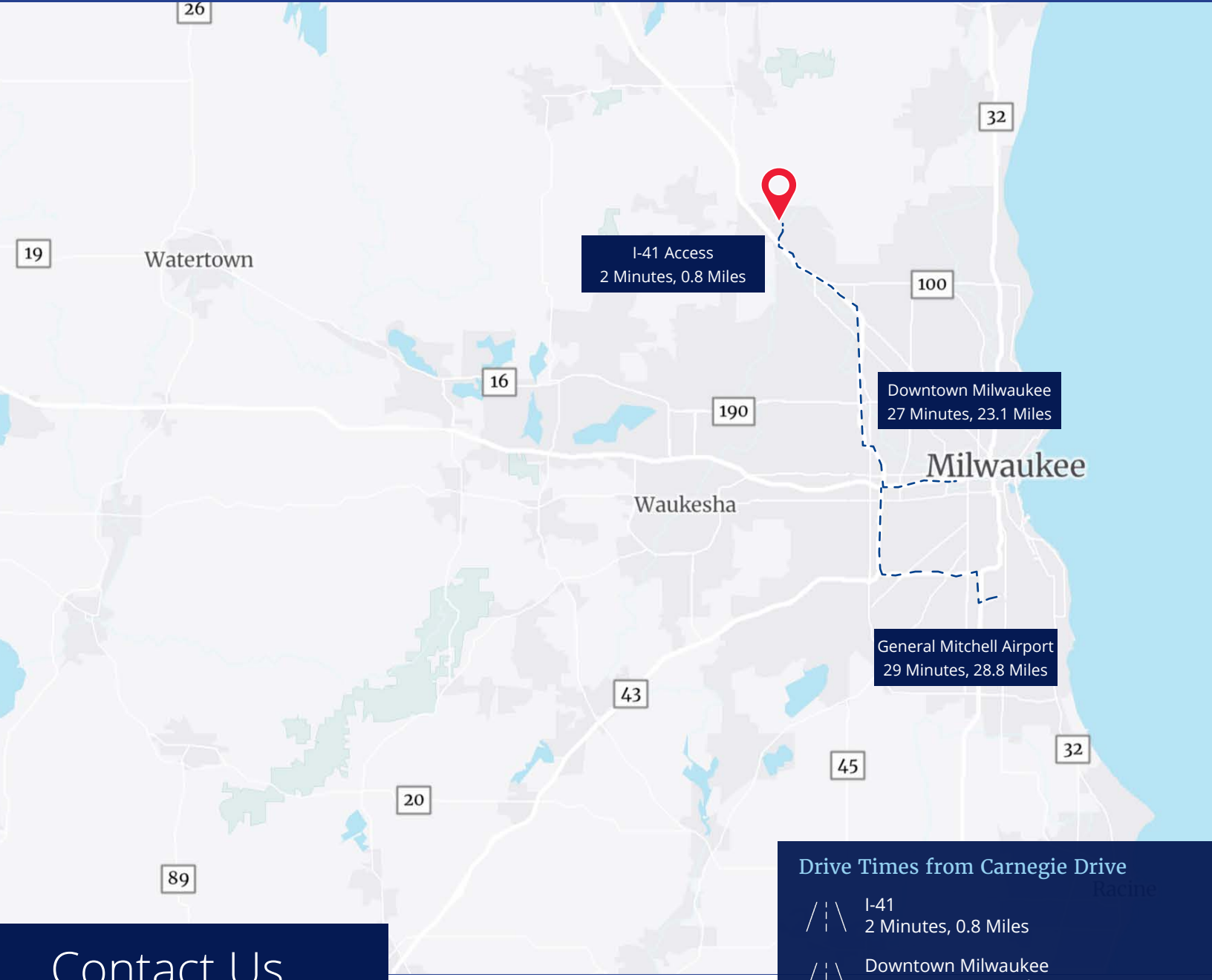


Building 2






Building 3





Contact Us

Drive Times from Carnegie Drive

-  I-41
2 Minutes, 0.8 Miles
-  Downtown Milwaukee
27 Minutes, 23.1 Miles
-  General Mitchell Airport
29 Minutes, 28.8 Miles



Steve Sewart
Partner
+1 414 278 6823 (direct)
+1 414 732 3490 (mobile)
steve.sewart@colliers.com



Brett Garceau, SIOR
Executive Vice President
+1 414 278 6878 (direct)
+1 262 501 8319 (mobile)
brett.garceau@colliers.com

Colliers | Wisconsin | 833 E Michigan Street, Suite 500 | Milwaukee, WI 53202 | P: +1 414 276 9500 F: +1 414 276 9501

This document/email has been prepared by Colliers International for advertising and general information only. Colliers International makes no guarantees, representations or warranties of any kind, expressed or implied, regarding the information including, but not limited to, warranties of content, accuracy and reliability. Any interested party should undertake their own inquiries as to the accuracy of the information. Colliers International excludes unequivocally all inferred or implied terms, conditions and warranties arising out of this document and excludes all liability for loss and damages arising there from. This publication is the copyrighted property of Colliers International and /or its licensor(s). © 2024. All rights reserved. This communication is not intended to cause or induce breach of an existing listing agreement.



State Of Wisconsin | Disclosure to Non-Residential Customers

Prior to negotiating on your behalf the Brokerage firm, or an agent associated with the firm, must provide you the following disclosure statement:

Broker Disclosure to Customers

You are a customer of the brokerage firm (hereinafter Firm). The Firm is either an agent of another party in the transaction or a subagent of another firm that is the agent of another party in the transaction. The broker or a salesperson acting on behalf of the Firm may provide brokerage services to you. Whenever the Firm is providing brokerage services to you, the Firm and its brokers and salespersons (hereinafter Agents) owe you, the customer, the following duties:

- The duty to provide brokerage services to you fairly and honestly.
- The duty to exercise reasonable skill and care in providing brokerage services to you.
- The duty to provide you with accurate information about market conditions with a reasonable time if you request it, unless disclosure of the information is prohibited by law.
- The duty to disclose to you in writing certain Material Adverse Facts about a property, unless disclosure of the information is prohibited by law.
- The duty to protect your confidentiality. Unless the law requires it, the Firm and its Agents will not disclose your confidential information or the confidential information to other parties.
- The duty to safeguard trust funds and other property held by the Firm or its Agents.
- The duty, when negotiating, to present contract proposals in an objective and unbiased manner and disclose the advantages and disadvantages of the proposals.

Please review this information carefully. An Agent of the Firm can answer your questions about brokerage services, but if you need legal advice, tax advice or a professional home inspection contact an attorney, tax advisor, or home inspector. This disclosure is required by section 452.135 of the Wisconsin statutes and is for information only. It is a plain-language summary of the duties owed to a customer under section 452.133 (1) of the Wisconsin statutes.

Confidentiality Notice to Customers

The Firm and its Agents will keep confidential any information given to the Firm and its Agents in confidence, or any information obtained by the Firm and its Agents that a reasonable person would want to be kept confidential, unless the information must be disclosed by law or you authorize the Firm to disclose particular information. The Firm and its Agents shall continue to keep the information confidential after the Firm is no longer providing brokerage services to you.

The following information is required to be disclosed by law:

1. Material Adverse Facts, as defined in section 452.01 (5g) of the Wisconsin Statutes.
2. Any facts known by the Firm or its Agents that contradict any information included in a written inspection report on the property or real estate that is the subject of the transaction.

To ensure that the Firm and its Agents are aware of what specific information you consider confidential, you may list that information below, or provide that information to the Firm and its Agents by other means. At a later time, you may also provide the Firm and its Agents with other information you consider to be confidential.

Confidential information: _____

Non-Confidential information: (The following information may be disclosed by the Firm and its Agents): _____

(Insert information you authorize to be disclosed, such as financial qualification information.)

Definition of Material Adverse Facts

A "Material Adverse Fact" is defined in Wis. Stat 452.01 (5g) as an Adverse Fact that a party indicates is of such significance, or that is generally recognized by a competent licensee as being of such significance to a reasonable party, that it affects or would affect the party's decision to enter into a contract or agreement concerning a transaction or affects or would affect the party's decision about the terms of such a contract or agreement.

An "Adverse" fact is defined in Wis. Stat. 452.01 (1e) as a condition or occurrence that a competent licensee generally recognizes will significantly and adversely affect the value of the property, significantly reduce the structural integrity of improvements to real estate, or present a significant health risk to occupants of the property; or information that indicates that a party to a transaction is not able to or does not intend to meet his or her obligations under a contract or agreement made concerning the transaction.

Sex Offender Registry

Notice: You may obtain information about the sex offender registry and persons registered with the registry by contacting the Wisconsin Department of Corrections on the Internet at <http://offender.doc.state.wi.us/public/>

No representation is made as to the legal validity of any provision or the adequacy of any provision in any specific transaction.

Copyright 2016 by Wisconsin REALTORS Association.

