



9851 Eighth St

9851 Eighth St, Rancho Cucamonga, CA 91730



Samantha Gallardo

Re/Max Proper

12505 N Mainstreet, Suite 240, Rancho Cucamonga, CA 91739

therealtyduo@gmail.com

(909) 285-4812



9851 Eighth St

\$19.80 - \$22.20 /SF/YR

With multiple unit sizes available ranging from 1,500 to 6,000 square feet, this property caters to businesses of all sizes. Two 3,000-square-foot units also feature attached private yards, providing additional storage or workspace. The property offers convenient access to major freeways: 10, 15 and 210, ensuring seamless logistics and customer accessibility. This property is zoned General Industrial and includes many allowed uses including automotive. Please contact the brokers for more information....

- Private Yard
- Zoned General Industrial
- Many Automotive Uses Allowed



Rental Rate:	\$19.80 - \$22.20 /SF/YR
--------------	--------------------------

Min. Divisible:	1,500 SF
-----------------	----------

Property Type:	Industrial
----------------	------------

Property Subtype:	Warehouse
-------------------	-----------

Rentable Building Area:	45,856 SF
-------------------------	-----------

Year Built:	1986
-------------	------

Rental Rate Mo:	\$1.85 /SF/MO
-----------------	---------------

1st Floor Ste C

Space Available	1,500 SF
Rental Rate	\$22.20 /SF/YR
Date Available	March 01, 2025
Service Type	Modified Gross
Space Type	Relet
Space Use	Flex
Lease Term	3 - 5 Years

Unit is currently getting rehabbed. Will be ready March 1, 2025. Approximately 1500 square foot space with an office and restroom. Overhead door is approximately 10.5 high by 11.5 wide. Power estimated, not confirmed 120/208, 3 phase. Zoned General Industrial. Owner will allow automotive and woodworking. Please confirm with city for automotive use. No fabrication. Power and measurements are estimates only.

1st Floor Ste D

Space Available	1,500 SF
Rental Rate	\$22.20 /SF/YR
Date Available	Now
Service Type	Modified Gross
Space Type	Relet
Space Use	Industrial
Lease Term	3 - 5 Years

Unit is currently getting rehabbed. Will be ready March 1, 2025. Approximately 1500 square foot space with an office and restroom. Overhead door is approximately 10.5 high by 11.5 wide. Power estimated, not confirmed 120/208, 3 phase. Zoned General Industrial. Owner will allow automotive and woodworking. Please confirm with city for automotive use. No fabrication. Power and measurements are estimates only.

1st Floor Ste J & I

Space Available	3,000 SF
Rental Rate	\$22.00 /SF/YR
Date Available	Now
Service Type	Modified Gross
Office Size	200 SF
Space Type	Relet
Space Use	Industrial
Lease Term	3 - 5 Years

Unit is currently getting rehabbed. Will be ready March 1, 2025. Approximately 3000 square foot space with two offices and a restroom. Approximately 5000 square foot yard shared with neighboring tenant. Overhead door is approximately 11 high by 12 wide. Power estimated, not confirmed 120/208, 3 phase. Zoned General Industrial. Owner will allow automotive and woodworking. Please confirm with city for automotive use. No fabrication. Power and measurements are estimates only.

1st Floor Ste L

Space Available	1,500 SF
Rental Rate	\$22.20 /SF/YR
Date Available	March 01, 2025
Service Type	Modified Gross
Space Type	Relet
Space Use	Flex
Lease Term	3 - 5 Years

Unit is currently getting rehabbed. Will be ready March 1, 2025. Approximately 1500 square foot space with an office and restroom. Overhead door is approximately 10.5 high by 11.5 wide. Power estimated, not confirmed 120/208, 3 phase. Zoned General Industrial. Owner will allow automotive and woodworking. Please confirm with city for automotive use. No fabrication. Power and measurements are estimates only.

1st Floor Ste M & R

Space Available	3,000 - 6,000 SF
Rental Rate	\$19.80 /SF/YR
Date Available	Now
Service Type	Modified Gross
Office Size	300 SF
Space Type	Relet
Space Use	Industrial
Lease Term	3 - 5 Years

Unit is currently getting rehabbed. Will be ready March 1, 2025. Approximately 3000 or 6000 square foot space (divisible) with two offices and a restroom for each 3000 square feet unit. Approximately 5000 square foot yard shared with neighboring tenant or whole 5000 SF yard for the 6000 square feet unit. Overhead door is approximately 11 high by 12 wide. Power estimated, not confirmed 120/208, 3 phase. Zoned General Industrial. Owner will allow automotive and woodworking. Please confirm with city for automotive use. No fabrication. Power and measurements are estimates only.

1st Floor Ste O & N

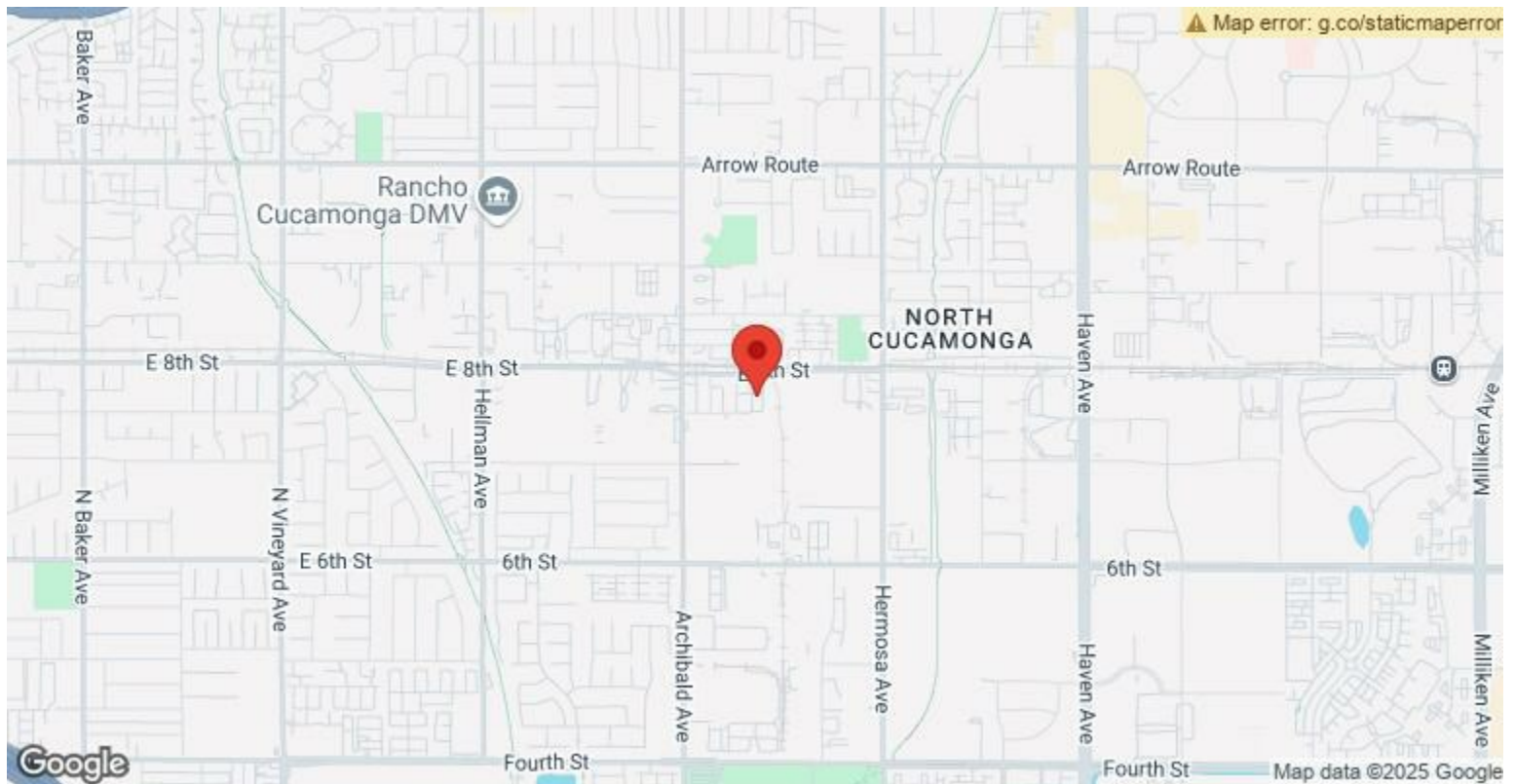
Space Available	3,000 - 6,000 SF
Rental Rate	\$22.00 /SF/YR
Date Available	Now
Service Type	Modified Gross
Office Size	200 SF
Space Type	Relet
Space Use	Industrial
Lease Term	3 - 5 Years

Unit is currently getting rehabbed. Will be ready March 1, 2025. Approximately 3000 or 6000 square foot space (divisible) with two offices and a restroom for each 3000 square feet unit. Approximately 5000 square foot yard shared with neighboring tenant or whole 5000 SF yard for the 6000 square feet unit. Overhead door is approximately 11 high by 12 wide. Power estimated, not confirmed 120/208, 3 phase. Zoned General Industrial. Owner will allow automotive and woodworking. Please confirm with city for automotive use. No fabrication. Power and measurements are estimates only.

1st Floor Ste Q

Space Available	1,500 SF
Rental Rate	\$22.20 /SF/YR
Date Available	Now
Service Type	Modified Gross
Space Type	Relet
Space Use	Industrial
Lease Term	3 - 5 Years

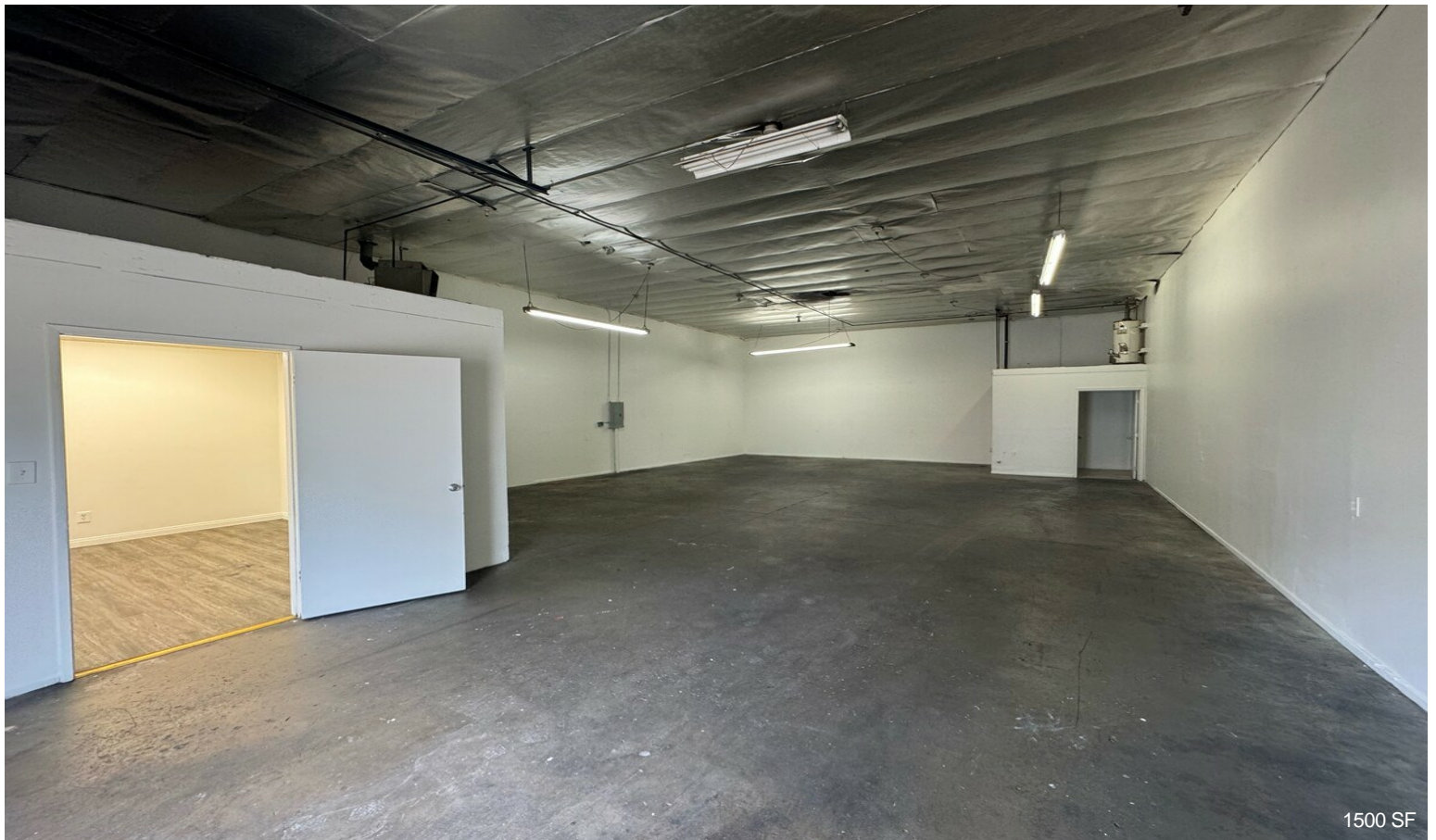
Unit is currently getting rehabbed. Will be ready March 1, 2025. Approximately 1500 square foot space with an office and restroom. Overhead door is approximately 10.5 high by 11.5 wide. Power estimated, not confirmed 120/208, 3 phase. Zoned General Industrial. Owner will allow automotive and woodworking. Please confirm with city for automotive use. No fabrication. Power and measurements are estimates only.



9851 Eighth St, Rancho Cucamonga, CA 91730

With multiple unit sizes available ranging from 1,500 to 6,000 square feet, this property caters to businesses of all sizes. Two 3,000-square-foot units also feature attached private yards, providing additional storage or workspace. The property offers convenient access to major freeways: 10, 15 and 210, ensuring seamless logistics and customer accessibility. This property is zoned General Industrial and includes many allowed uses including automotive. Please contact the brokers for more information.

Property Photos



Property Photos

