

RETAIL SPACE AVAILABLE FOR LEASE

TOWNE CENTRE

1115 E FLORENCE BLVD | CASA GRANDE, AZ 85122

OFFICE / RETAIL SPACE
±1,200 SF



Exclusive Contacts:

Sarge Glenn

D 480.214.1126

M 480.390.3515

sglenn@cpiaz.com



COMMERCIAL PROPERTIES INC.

Locally Owned. Globally Connected. CORFAC INTERNATIONAL

TEMPE: 2323 W. University Drive, Tempe, AZ 85281 | 480.966.2301
SCOTTSDALE: 8777 N. Gainey Center Dr., Suite 245, Scottsdale, AZ 85258 | www.cpiaz.com



RETAIL AVAILABLE FOR LEASE

Address	1115 E Florence Blvd Casa Grande, AZ 85122
Building Size	±21,316 SF
Zoning	B-2, City of Casa Grande
Year Built	1990
Parking	45 Spaces (2.11/1,000 SF)
Parcel	505-31-187C
Tenancy	Multi-Tenant
Frontage	428 ft on E Florence Blvd

Exclusive Contact:

Sarge Glenn
 D 480.214.1126
 M 480.390.3515
 sglenn@cpi.az.com



TEMPE: 2323 W. University Drive, Tempe, AZ 85281 | 480.966.2301
 SCOTTSDALE: 8777 N. Gainey Center Dr., Suite 245, Scottsdale, AZ 85258 | www.cpi.az.com



The information contained herein has been obtained from various sources. We have no reason to doubt its accuracy; however, J & J Commercial Properties, Inc. has not verified such information and makes no guarantee, warranty or representation about such information. The prospective buyer or lessee should independently verify all dimensions, specifications, floor plans, and all information prior to the lease or purchase of the property. All offerings are subject to prior sale, lease, or withdrawal from the market without prior notice.

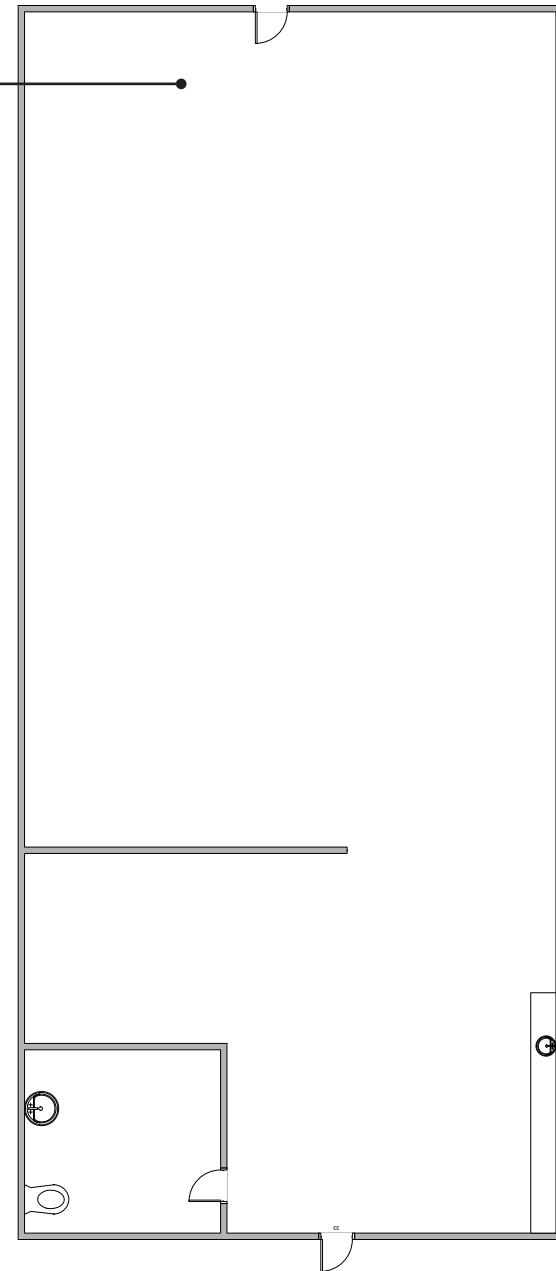
TOWNE CENTRE

1115 E FLORENCE BLVD
CASA GRANDE, AZ 85122

Suite D

±1,200 SF | \$14.00 NNN

- Office Or Retail Use
- Great Signage
- SE Corner Florence Blvd & Trezell Rd



TOWNE CENTRE

1115 E FLORENCE BLVD
CASA GRANDE, AZ 85122

DEMOGRAPHICS ONE MILE RADIUS



\$46,551

Median Household Income



\$21,998

Per Capita Income



\$69,284

Median Net Worth

10,475

Population



3,690

Households

33.6

Median Age

\$39,752

Median Disposable Income



55%

White Collar



28%

Blue Collar



Services

9.1%

Unemployment Rate

