

FOR LEASE

1650 MARKET DRIVE
STILLWATER, MN 55082



2,698 SF

Retail Space Available



COMMERCIAL REAL ESTATE SERVICES

Jon Whitcomb *Principal - Broker*

1950 Northwestern Ave N #101
Stillwater, MN 55082

Direct 651.351.5130
Office 651.351.5005

Email Jon@MetroEastCRE.com
Web www.MetroEastCRE.com

FOR LEASE: Retail Space

1650 Market Drive | Stillwater, MN 55082



Property Information

Available SF:	2,698 SF
Lease Rate:	\$15.00 PSF NNN
Tax & CAM:	\$6.26 PSF
Available Date:	60 Days
Building Size:	22,096 SF
Space Use:	Retail
Parking:	Ample lot
Co-Tenants:	» Ace Hardware » Edge Martial Arts
Space Features:	» Stillwater Blvd Frontage » Private Entrance » Open floor plan » Restrooms in suite



COMMERCIAL REAL ESTATE SERVICES

Jon Whitcomb *Principal - Broker*

1950 Northwestern Ave N #101
Stillwater, MN 55082

Direct 651.351.5130
Office 651.351.5005

Email Jon@MetroEastCRE.com
Web www.MetroEastCRE.com

The information contained herein has been provided by the property owner or obtained from sources deemed reliable. Although the information is believed to be accurate, it is not guaranteed. The property is subject to price change, prior sale or lease and withdrawal from the market, without notice. Buyer is responsible to conduct its own due diligence, as this offering contains no representations or warranties.

FOR LEASE: Retail Space

1650 Market Drive | Stillwater, MN 55082



COMMERCIAL REAL ESTATE SERVICES

Jon Whitcomb Principal - Broker

1950 Northwestern Ave N #101
Stillwater, MN 55082

Direct 651.351.5130
Office 651.351.5005

Email Jon@MetroEastCRE.com
Web www.MetroEastCRE.com

The information contained herein has been provided by the property owner or obtained from sources deemed reliable. Although the information is believed to be accurate, it is not guaranteed. The property is subject to price change, prior sale or lease and withdrawal from the market, without notice. Buyer is responsible to conduct its own due diligence, as this offering contains no representations or warranties.

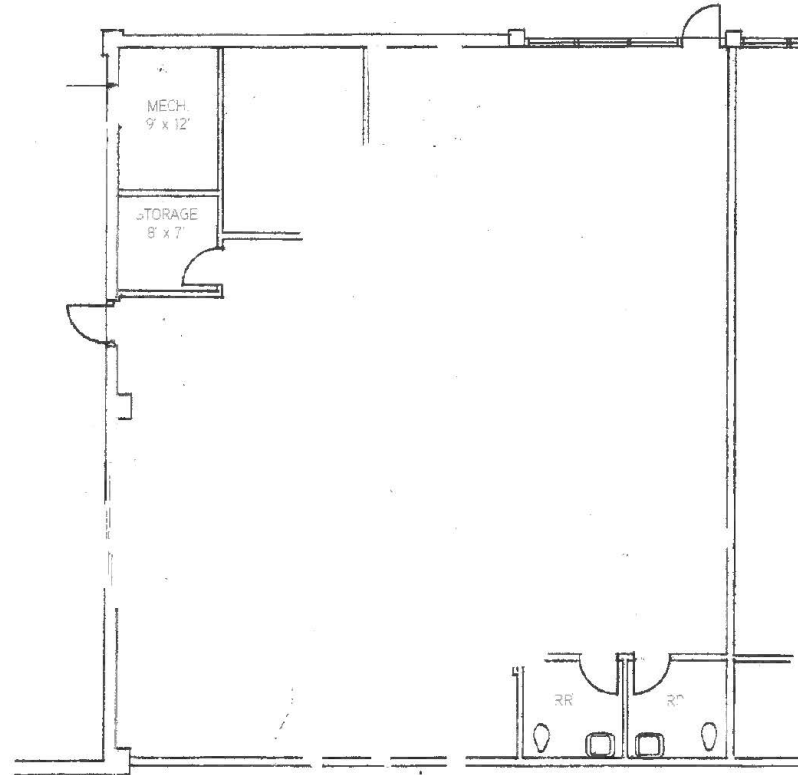
FOR LEASE: Retail Space

1650 Market Drive | Stillwater, MN 55082

Available Space

2,698 SF

* All square footages assumed to be approximate



Jon Whitcomb Principal - Broker

1950 Northwestern Ave N #101
Stillwater, MN 55082

Direct 651.351.5130
Office 651.351.5005

Email Jon@MetroEastCRE.com
Web www.MetroEastCRE.com

The information contained herein has been provided by the property owner or obtained from sources deemed reliable. Although the information is believed to be accurate, it is not guaranteed. The property is subject to price change, prior sale or lease and withdrawal from the market, without notice. Buyer is responsible to conduct its own due diligence, as this offering contains no representations or warranties.



COMMERCIAL REAL ESTATE SERVICES

FOR LEASE: Retail Space

1650 Market Drive | Stillwater, MN 55082



COMMERCIAL REAL ESTATE SERVICES

Jon Whitcomb Principal - Broker

1950 Northwestern Ave N #101
Stillwater, MN 55082

Direct 651.351.5130
Office 651.351.5005

Email Jon@MetroEastCRE.com
Web www.MetroEastCRE.com

The information contained herein has been provided by the property owner or obtained from sources deemed reliable. Although the information is believed to be accurate, it is not guaranteed. The property is subject to price change, prior sale or lease and withdrawal from the market, without notice. Buyer is responsible to conduct its own due diligence, as this offering contains no representations or warranties.