

## PROPERTY OVERVIEW



PER UNIT  
\$208,334



PRO FORMA CAP  
5.32%



# OF UNITS  
12



YEAR BUILT  
1960



YEAR RENOVATED  
2019

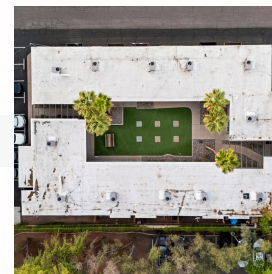
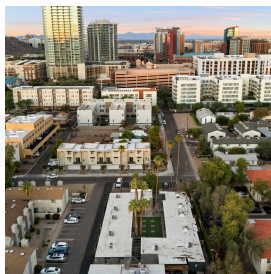


SQUARE FEET  
7,180

# FOR SALE

626 SOUTH WILSON STREET, TEMPE, AZ 85281

## \$2,500,000.00



## ALEX AFFAS, CCIM

Designated Broker

(480) 516-2046

Alex@AFFIRE.co



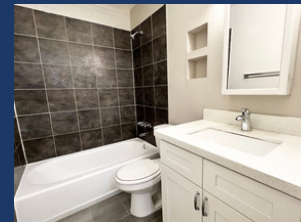
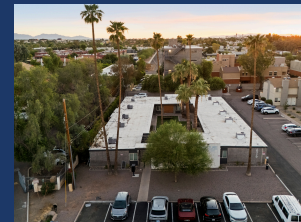
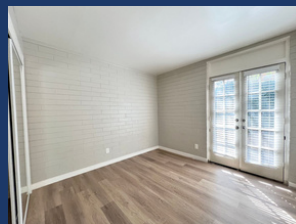
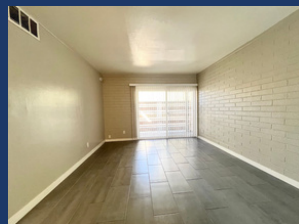
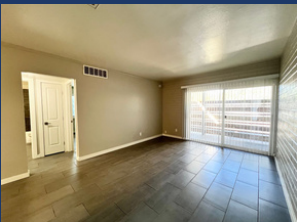
# AFFIRE

REAL ESTATE & INVESTMENTS



# 12 UNIT MULTIFAMILY COMMUNITY IN TEMPE, AZ

## VENTURE ON WILSON



Attractive Unit Mix (10) 1-Bed / 1-Bath Units & (2) 2-Bed / 1-Bath Units

In-Suite Washer & Dryer

Individually Metered for Electricity

Communal Courtyard Provides Privacy & Inclusive Environment

One Block from the Newly Developed Whole Foods Market

Magnificent Tempe Location, Walking Distance to Mill Avenue & Arizona State University Tempe Campus