



For Sublease

515 Congress Ave.
Austin, TX 78701

Suite Details

Suite 1000: 4,743 RSF

- Available: Immediately
- Term: Through 8/31/2027
- Rate: Call Broker
- 2025 OPEX: \$26.68
- Downtown Views
- Open / Creative Space
- Large Conference Room
- Kitchen
- Great Natural Lighting



Although information has been obtained from sources deemed reliable, neither Owner nor JLL makes any guarantees, warranties or representations, express or implied, as to the completeness or accuracy as to the information contained herein. Any projections, opinions, assumptions or estimates used are for example only. There may be differences between projected and actual results, and those differences may be material. The Property may be withdrawn without notice. Neither Owner nor JLL accepts any liability for any loss or damage suffered by any party resulting from reliance on this information. If the recipient of this information has signed a confidentiality agreement regarding this matter, this information is subject to the terms of that agreement. ©2019 Jones Lang LaSalle IP, Inc. All rights reserved



For Sublease

515 Congress Ave.



Building Features

- Conferencing Facility
- 10th Floor Lounge and Patio
- High-end Fitness Center and Showers
- Coffee Station Onsite

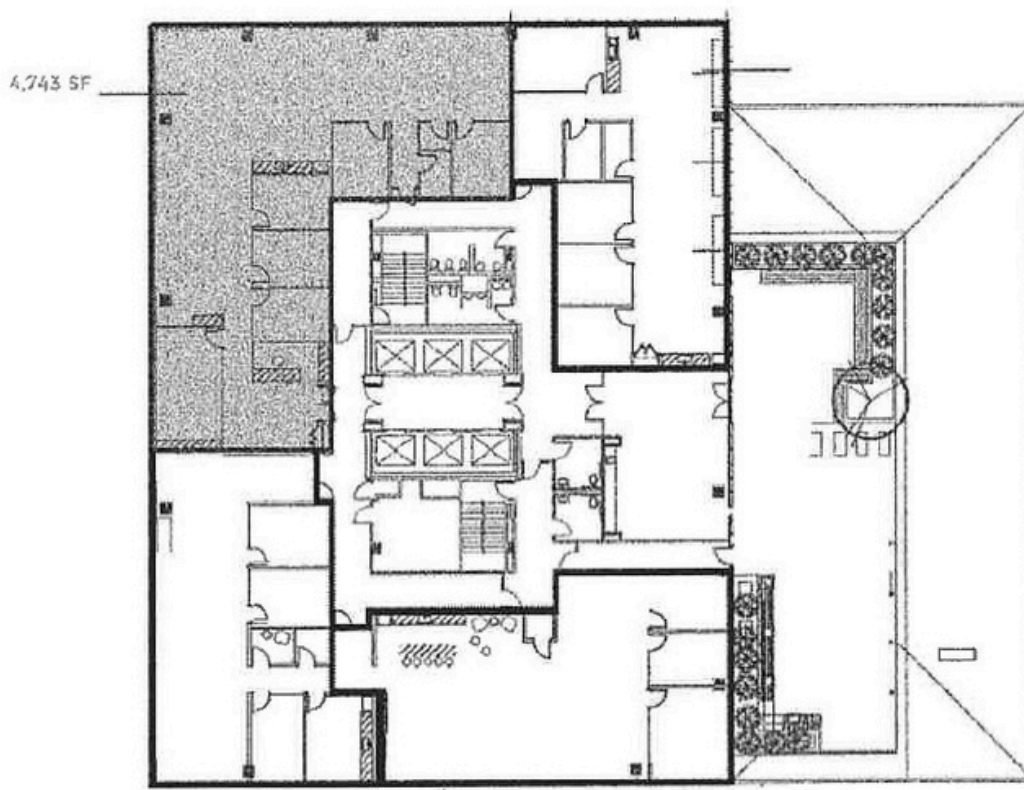


Although information has been obtained from sources deemed reliable, neither Owner nor JLL makes any guarantees, warranties or representations, express or implied, as to the completeness or accuracy as to the information contained herein. Any projections, opinions, assumptions or estimates used are for example only. There may be differences between projected and actual results, and those differences may be material. The Property may be withdrawn without notice. Neither Owner nor JLL accepts any liability for any loss or damage suffered by any party resulting from reliance on this information. If the recipient of this information has signed a confidentiality agreement regarding this matter, this information is subject to the terms of that agreement. ©2019 Jones Lang LaSalle IP, Inc. All rights reserved

For Sublease

515 Congress Ave.
Suite 1000: 4,743 RSF

 [Click to Tour](#)



Elizabeth Thompson

Elizabeth.Thompson@jll.com

512 861 3414

Jack Fulp

Jack.Fulp@jll.com

925 431 9259

Grace Gammill

Grace.Gammill@jll.com

512 225 2718